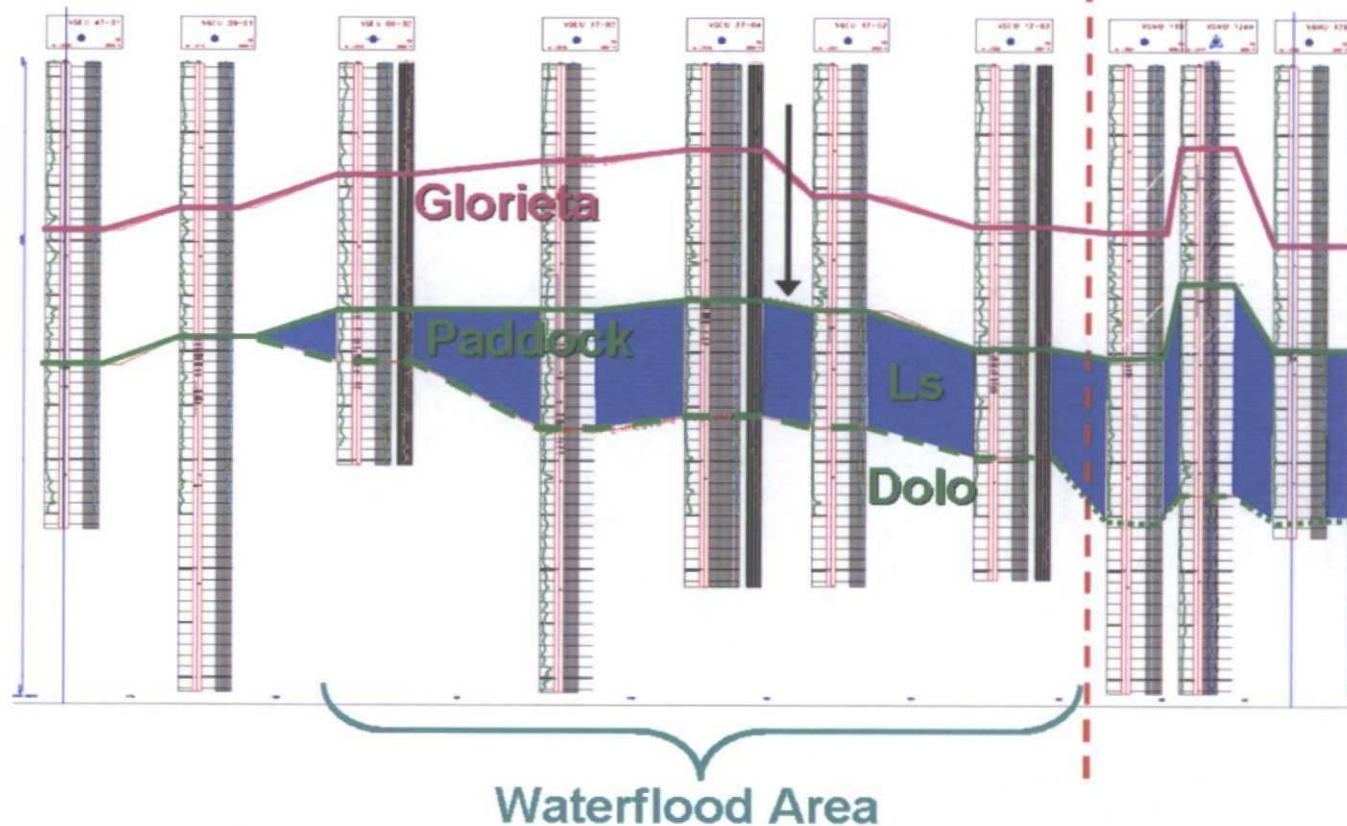


N - S Cross Section

A

A'



Surface Area:	1,058 acres
Depth:	6,000 ft
Formation:	Limestone
Avg Porosity:	10%
Avg Perm:	4 mD

BEFORE THE OIL CONSERVATION DIVISION
 Santa Fe, New Mexico
 Exhibit No. 12
 Submitted by:
CONOCOPHILLIPS COMPANY
 Hearing Date: March 7, 2013

ConocoPhillips

Restricted Confidential – Business Information