

A

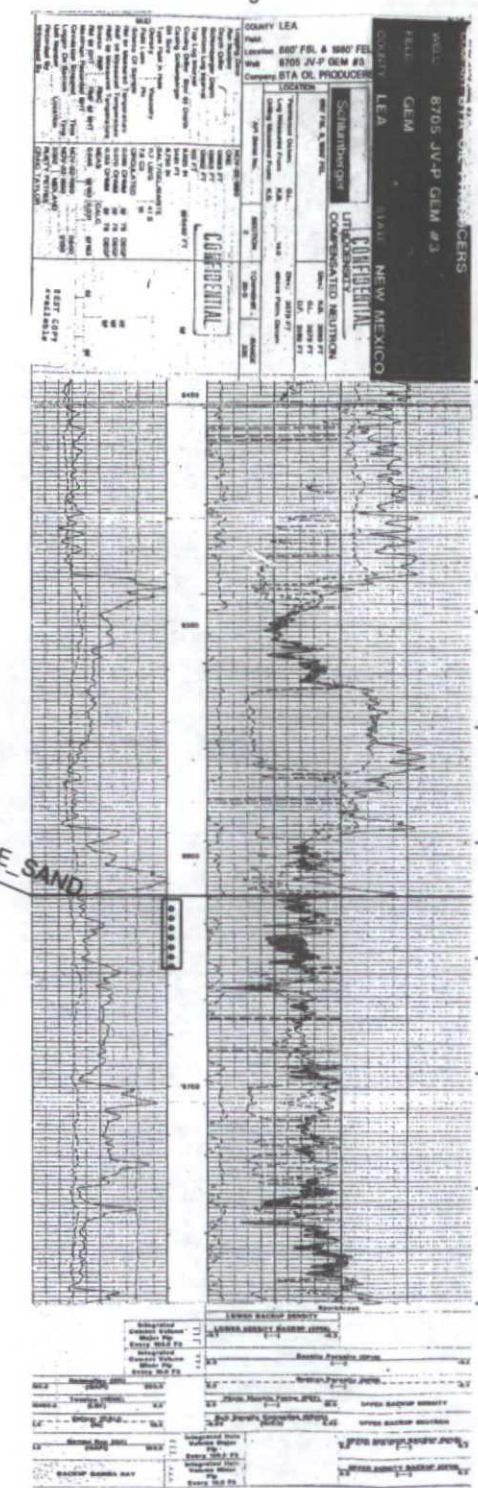
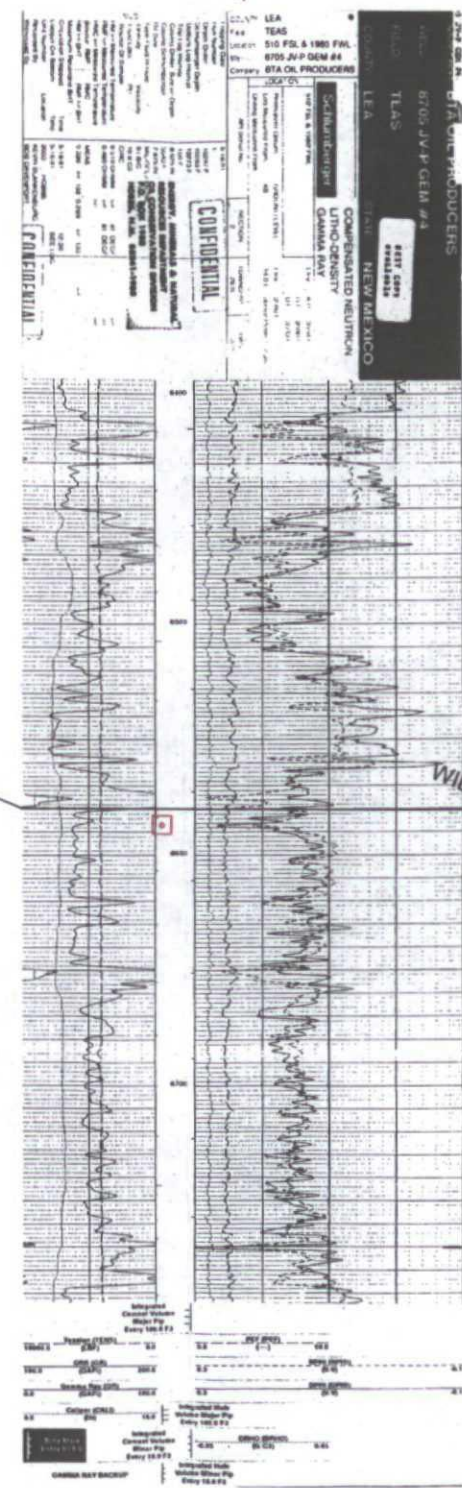
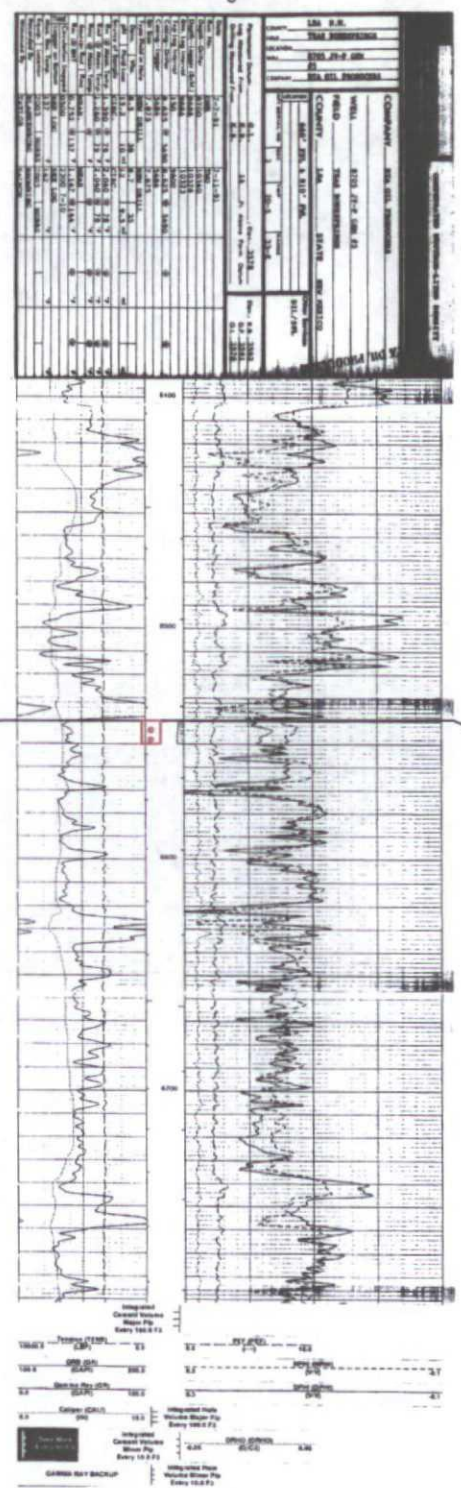
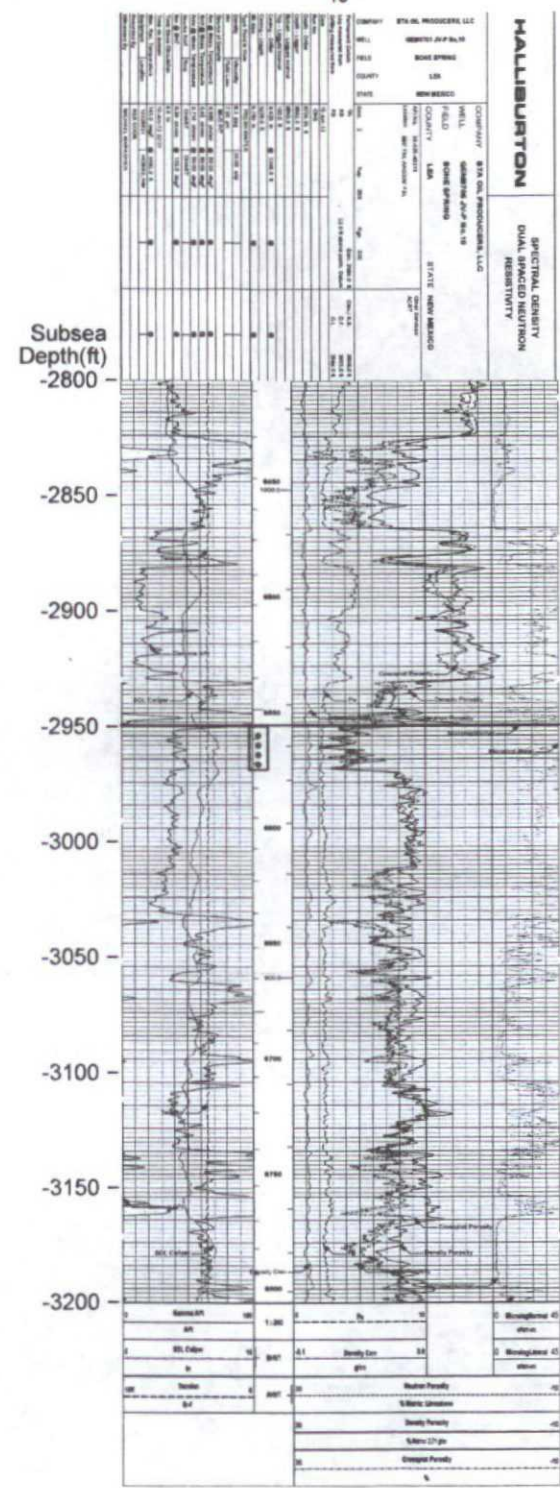
A'

BTA OIL PRODUCER LLC
GEM 8705 JV-P
10

BTA OIL PRODUCERS LLC
8705 JV-P GEM
5

BTA OIL PRODUCERS LLC
8705 JV-P GEM
4

BTA OIL PRODUCERS
GEM 8705 JV-P
3



BEFORE THE OIL CONSERVATION DIVISION
Santa Fe, New Mexico
Exhibit No. 9
Submitted by:
BTA OIL PRODUCERS, LLC
Hearing Date: March 21, 2013

BTA OIL PRODUCERS

NEW MEXICO

GEM LEASE

Structural X-Section of Delaware Pay

EDDY COUNTY, NEW MEXICO

Operator

Well Name

Well Number

CORES

SDWL

SHOWS

GAS

OIL

WATER

OTHER

DST/WLT

IP

CASING

LINER

PERFS

ACTIVE

INACTIVE

OPENHOLE

BRIDGEPLUG

FRACPLUG

PACKER

PROPOSED

SQUEEZED

SINK

By: BMM

March 18, 2013 9:37 AM