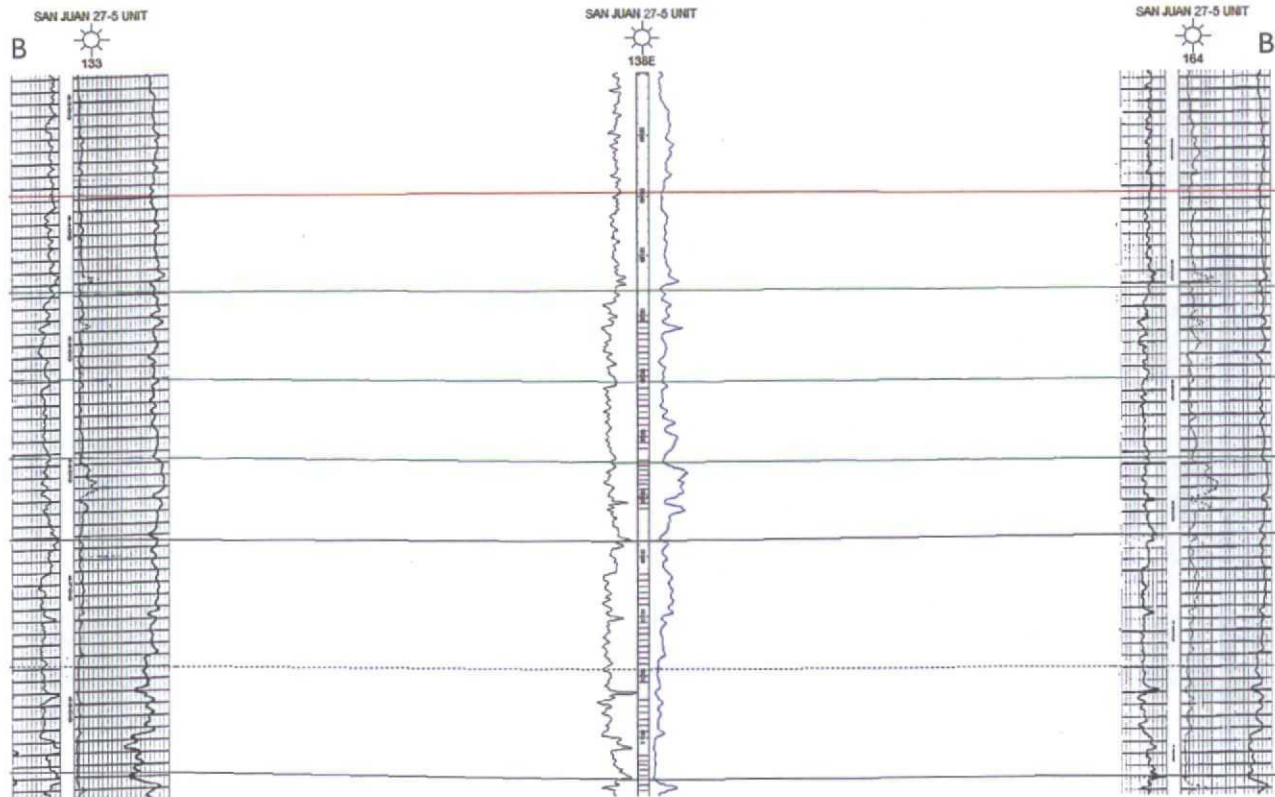
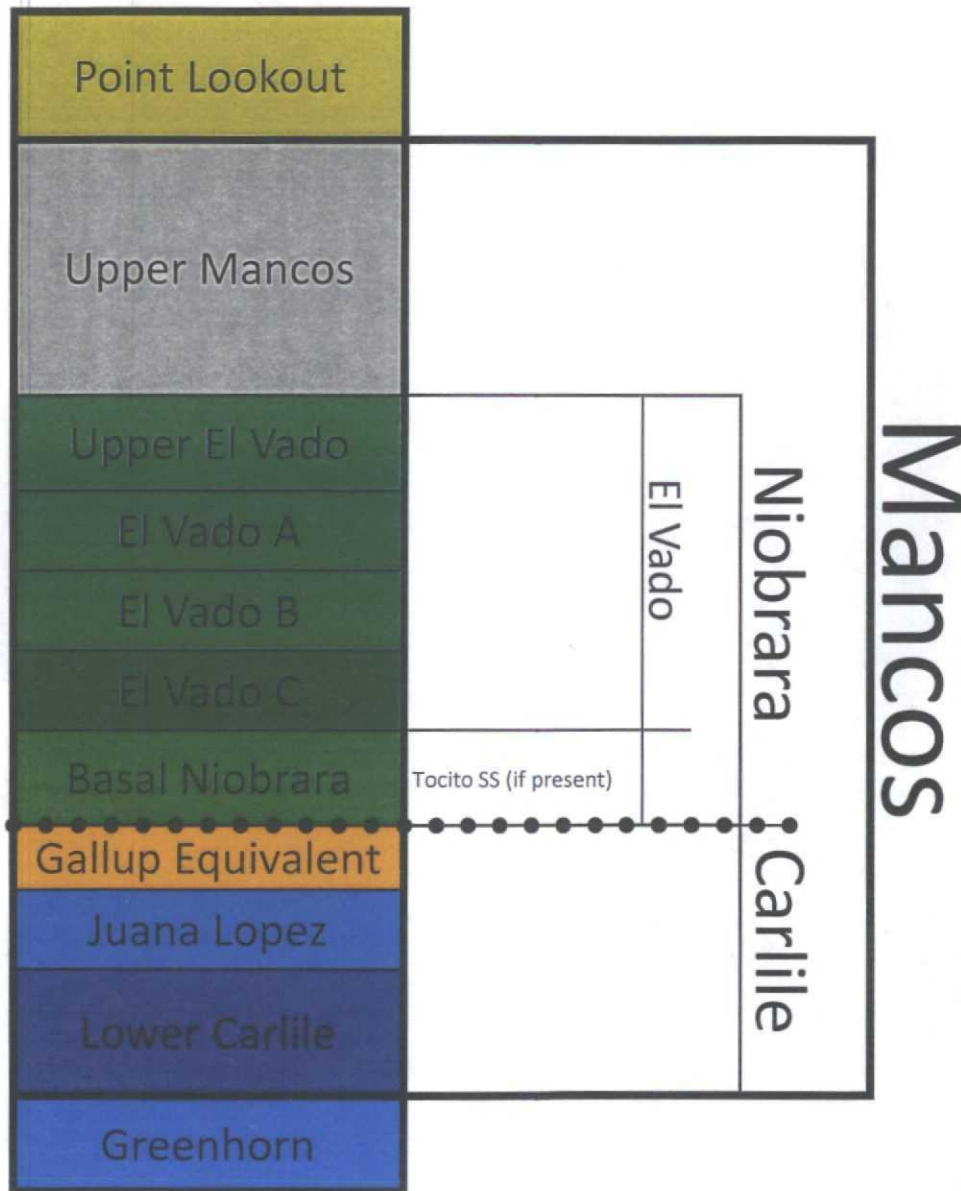


## San Juan 27-5 Cross-Section

- GR in left track; ILD in right track
- Pink dashes represent perforations
- Hung on Upper El Vado marker (red)
- Green picks represent El Vado correlations
- Dashed line Basal Niobrara unconformity



# Mancos Stratigraphic Terminology Summary



There is a hierarchy of terminology within the Mancos, similar to the Cliff House, Menefee, and Point Lookout within the Mesa Verde Group. The Mancos describes the entire section between the base of the Point Lookout and the top of the Greenhorn. This section is divided into the Upper Mancos (which has no further subdivisions), the Niobrara (which is subdivided into the El Vado and the Basal Niobrara), and the Carlile (which is subdivided into the Gallup equivalent, Juana Lopez, and Lower Carlile).

- Main Target:
  - El Vado (Upper, A, B, & C, variable quality)
- Possible Future Targets:
  - Juana Lopez
  - Lower Carlile
- Basal Niobrara
  - Represents the section where Tocito sands exist
  - The Basal Niobrara can be found with or without the presence of Tocito sands, though is generally not pay without the Tocito sands
- Gallup Equivalent
  - Rocks existing below the Base Niobrara unconformity (dotted line) and above the Juana Lopez
  - These are the only true Gallup age rocks in the basin, and are not sandstones. There is no Gallup sandstone in the productive part of the basin.
  - Throughout most of the basin, the unconformity has completely eroded and removed the Gallup equivalent section.

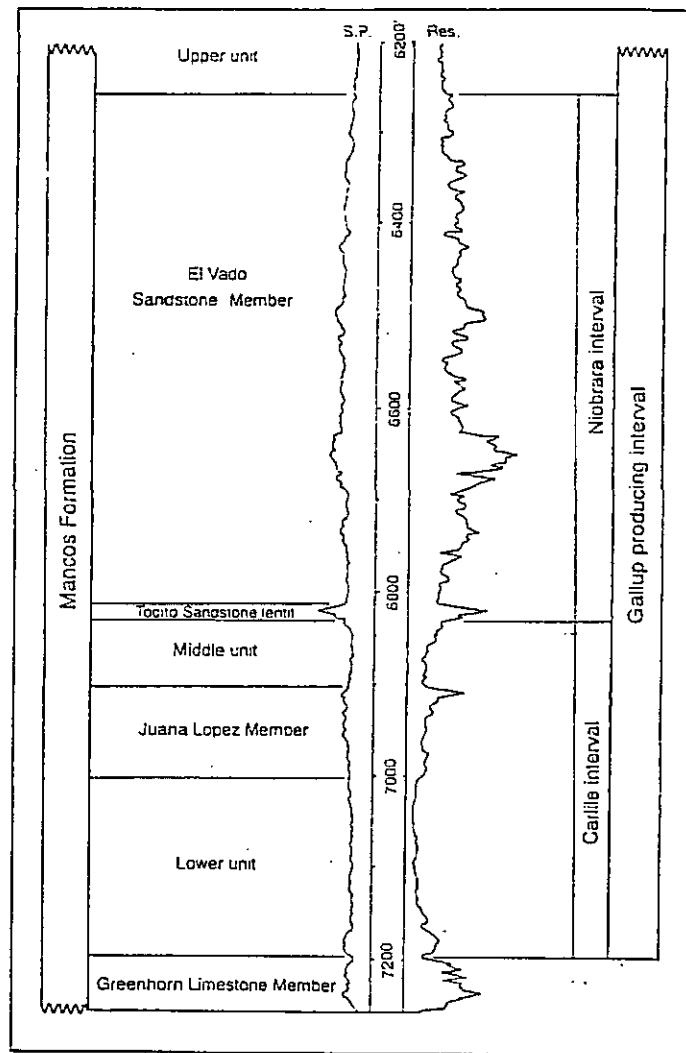


FIGURE SJ-4.3—Typical log and vertical limits of the Gallup producing interval as defined by New Mexico Oil Conservation Division, Caulkins Oil Co. No. 140 Breech D well, sec. 11 T26N R6W. Modified from Fassett and Jentgen, 1978.