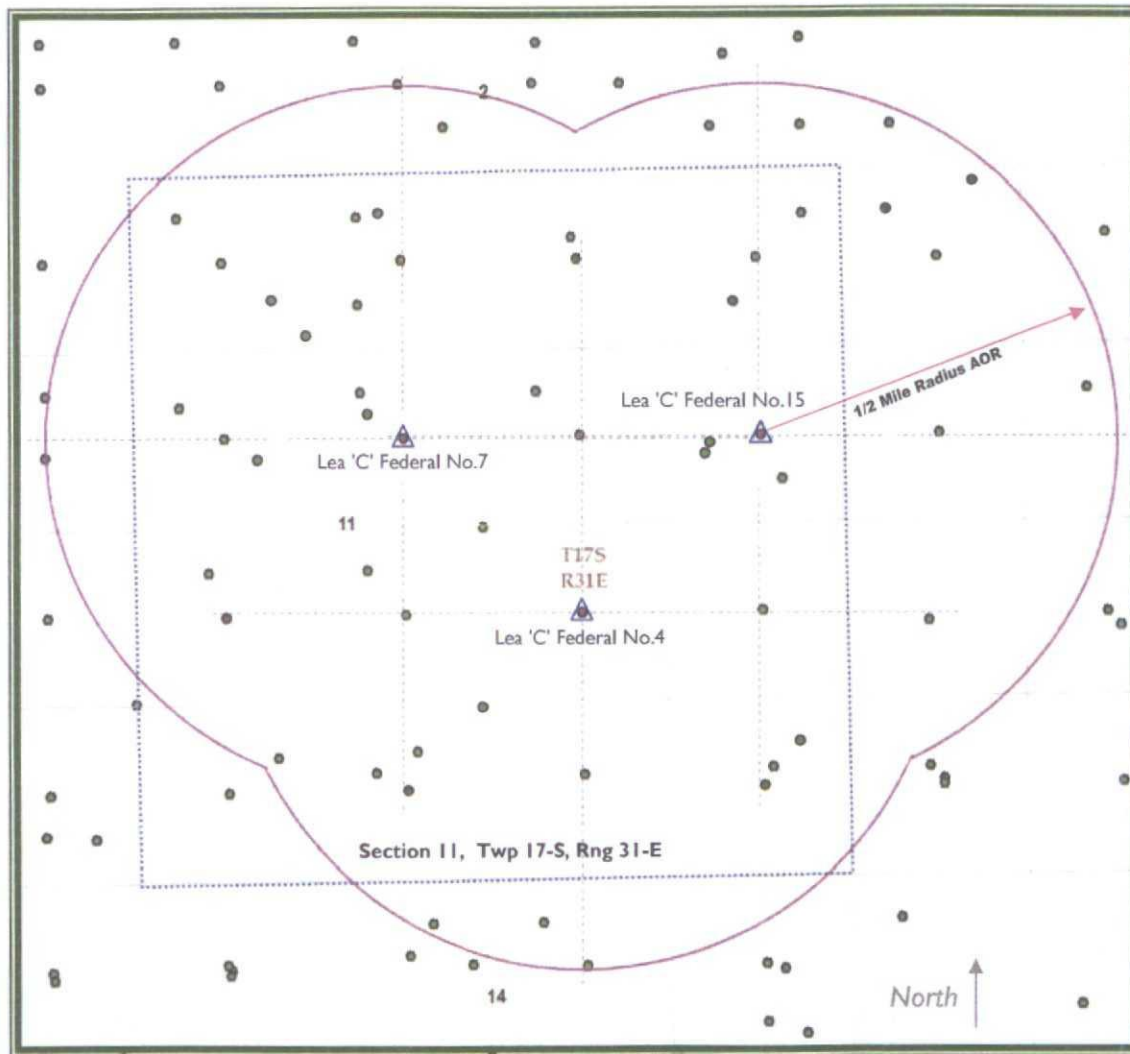
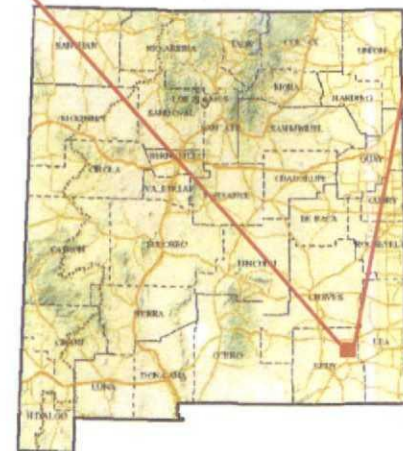
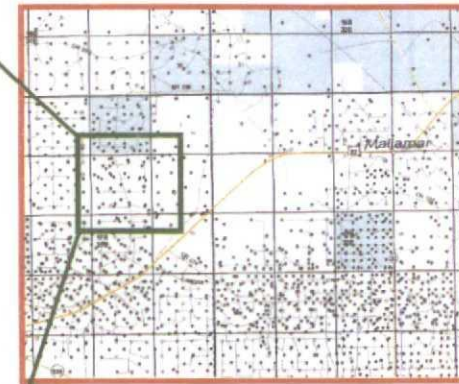


# Lea 'C' Federal Waterflood - Area of Review / Overview Map



~4.0 miles West of  
Maljamar, NM



Eddy County, New Mexico

**CAPSTONE**  
Natural Resources, LLC

NMOCD CASE NO. 15036  
September 5, 2013  
Exhibit No. 1

**SOS Consulting, LLC**