

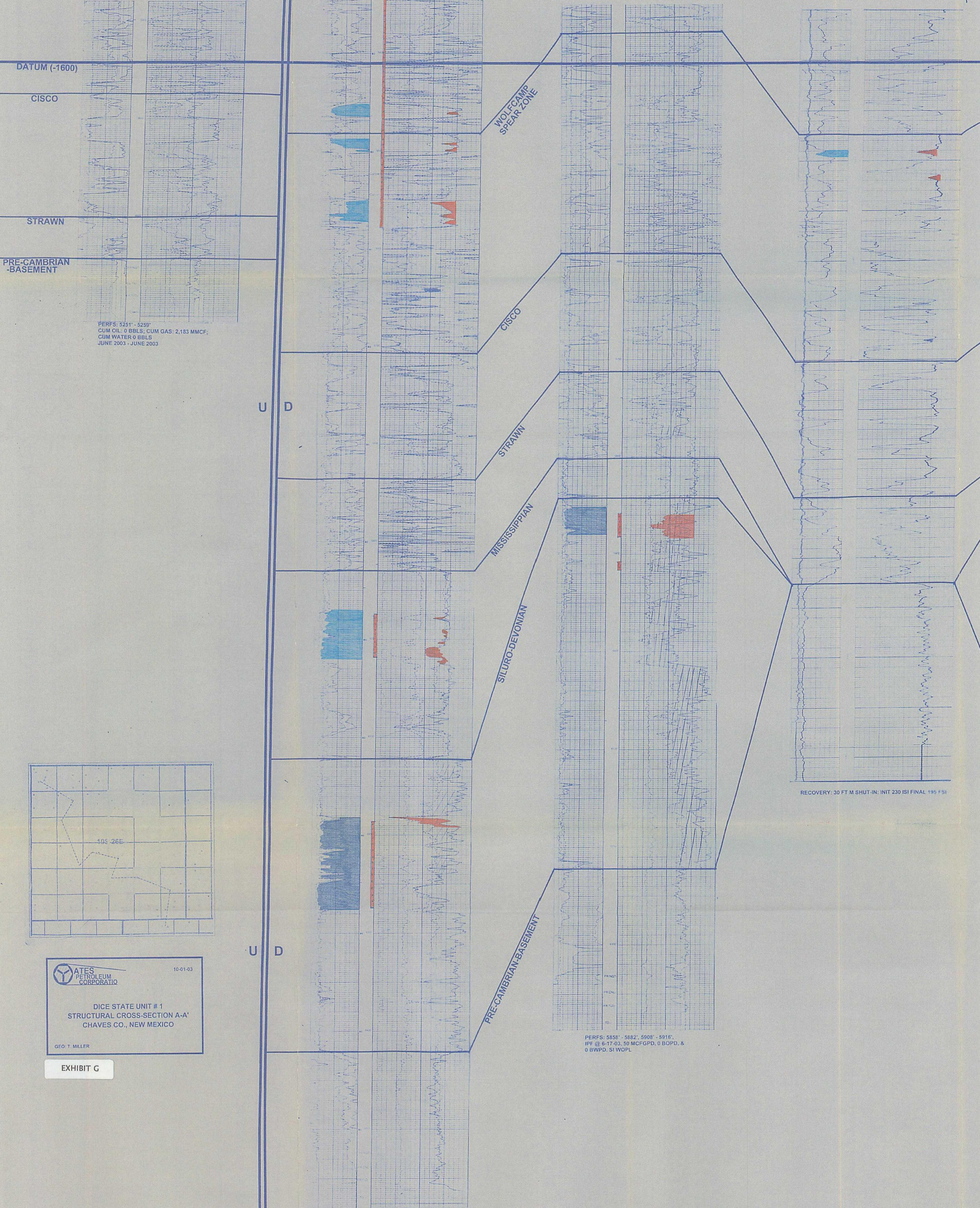
A

McCLELLAN OIL CORP.
ROSS FEDERAL # 3
1980' FSL & 1980' FWL
SEC. 6-10S-26E
KB 3743'

YATES PETROLEUM CORP.
HOOK "AWX" STATE # 1
1980' FNL & 1980' FEL
SEC. 8-10S-26E
KB 3809'

YATES PETROLEUM CORP.
ELECTROLUX "BCE" STATE # 1
660' FNL & 990' FWL
SEC. 17-10S-26E
KB 3796'

RALPH LOWE ESTATE
HUMBLE-COMANCHE # 1
660' FSL & 660' FEL
SEC. 20-10S-26E
KB 3682'

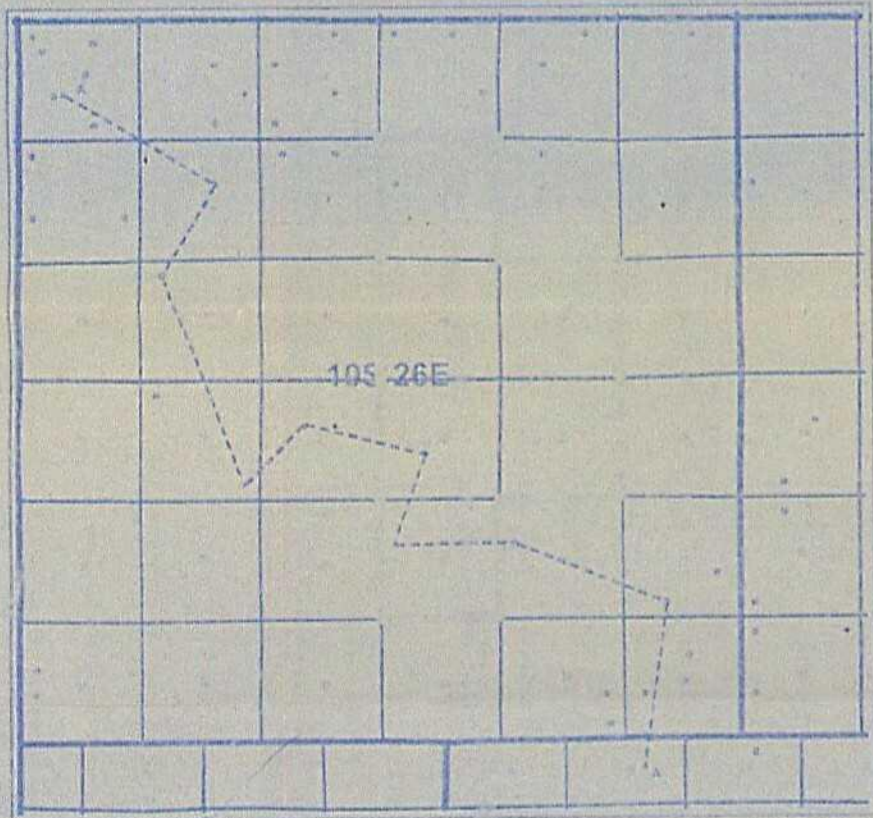


PERFS: 5251' - 5259'
CUM OIL: 0 BBLS; CUM GAS: 2,183 MMCF;
CUM WATER: 0 BBLS
JUNE 2003 - JUNE 2003

RECOVERY: 30 FT M SHUT-IN; INIT 230 ISI FINAL 195 FSI

PERFS: 5858' - 5882', 5908' - 5916',
IPF @ 6-17-03, 50 MCF/GPD, 0 BOPD, &
0 BWPD, SI WOPL

PERFS: 5131' - 5578', 5974' - 6018',
6186' - 6274'; CUM OIL: 0 BBLS; CUM GAS:
1,373 MMCF; CUM WATER: 0 BBLS
APRIL 2001 - JULY 2003



YATES PETROLEUM CORPORATION 10-01-03

DICE STATE UNIT # 1
STRUCTURAL CROSS-SECTION A-A'
CHAVES CO., NEW MEXICO

GEO. T. MILLER

EXHIBIT G