

District I  
1625 N. French Drive, Hobbs, NM 88240  
Phone: (575) 393-6161 Fax: (575) 393-0720

District II  
811 S. First Street, Artesia, NM 88210  
Phone: (575) 748-1283 Fax: (575) 748-9720

District III  
1000 Rio Brazos Road, Aztec, NM 87410  
Phone: (505) 334-6178 Fax: (505) 334-6170

District IV  
1220 S. St. Francis Drive, Santa Fe, NM 87505  
Phone: (505) 476-3460 Fax: (505) 476-3462

State of New Mexico  
Energy, Minerals & Natural Resources Department

Form C-102  
Revised August 1, 2011

Submit one copy to  
Appropriate District Office

OIL CONSERVATION DIVISION  
1220 South St. Francis Drive  
Santa Fe, NM 87505

☐ AMENDED REPORT

WELL LOCATION AND ACREAGE DEDICATION PLAT

|                |                            |   |
|----------------|----------------------------|---|
| *API Number    | *Pool Code                 | *Pool Name                                |
|                | 97232 / 47540              | BASIN MANCOS (M&N) / NAGEEZI GALLUP (O&P) |
| *Property Code | *Property Name             | *Well Number                              |
|                | SAMPLE WELL                |   |
| *GRID No.      | *Operator Name             | *Elevation                                |
| 120782         | WPX ENERGY PRODUCTION, LLC | 6866'                                     |

<sup>10</sup> Surface Location

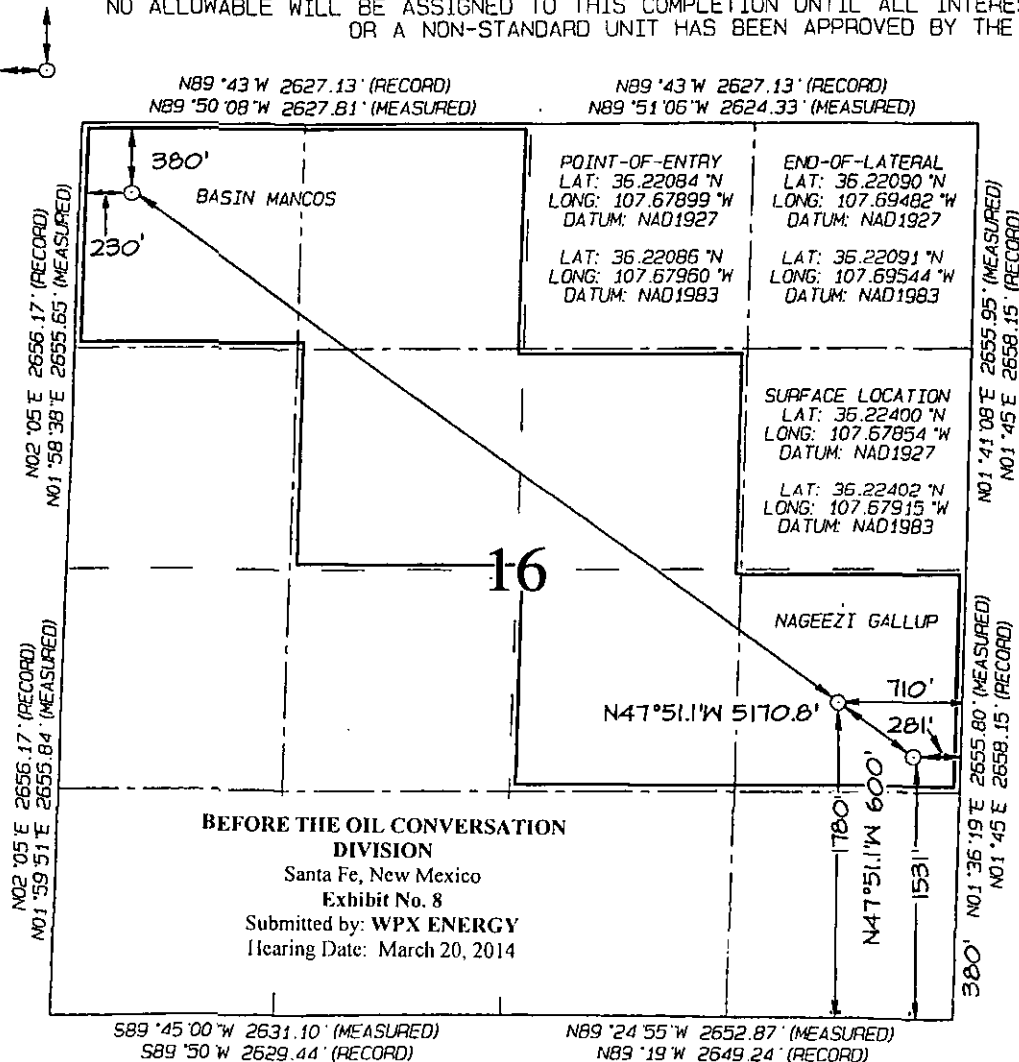
| UL or lot no. | Section | Township | Range | Lot Idn | Feet from the | North/South line | Feet from the | East/West line | County   |
|---------------|---------|----------|-------|---------|---------------|------------------|---------------|----------------|----------|
| I             | 16      | 23N      | 8W    |         | 1531          | S                | 281           | E              | SAN JUAN |

<sup>11</sup> Bottom Hole Location If Different From Surface

| UL or lot no. | Section | Township | Range | Lot Idn | Feet from the | North/South line | Feet from the | East/West line | County   |
|---------------|---------|----------|-------|---------|---------------|------------------|---------------|----------------|----------|
| M             | 16      | 23N      | 8W    |         | 380           | N                | 230           | W              | SAN JUAN |

|                               |                               |                                  |                         |
|-------------------------------|-------------------------------|----------------------------------|-------------------------|
| <sup>12</sup> Dedicated Acres | <sup>13</sup> Joint or Infill | <sup>14</sup> Consolidation Code | <sup>15</sup> Order No. |
| 240.0 Acres                   |                               |                                  |                         |

NO ALLOWABLE WILL BE ASSIGNED TO THIS COMPLETION UNTIL ALL INTERESTS HAVE BEEN CONSOLIDATED  
OR A NON-STANDARD UNIT HAS BEEN APPROVED BY THE DIVISION



<sup>17</sup> OPERATOR CERTIFICATION  
I hereby certify that the information contained herein is true and complete to the best of my knowledge and belief, and that this organization either owns a working interest or unleased mineral interest in the land including the proposed bottom-hole location or has a right to drill this well at this location pursuant to a contract with an owner of such a mineral or working interest, or to a voluntary pooling agreement or a compulsory pooling order heretofore entered by the division.

Signature \_\_\_\_\_ Date \_\_\_\_\_  
Printed Name \_\_\_\_\_  
E-mail Address \_\_\_\_\_

<sup>18</sup> SURVEYOR CERTIFICATION  
I hereby certify that the well location shown on this plat was plotted from field notes of actual surveys made by me or under my supervision, and that the same is true and correct to the best of my belief.

Date Revised: JANUARY 10, 2014  
Survey Date: FEBRUARY 1, 2013

Signature and Seal of Professional Surveyor \_\_\_\_\_

SAMPLE WELL

Certificate Number 15269