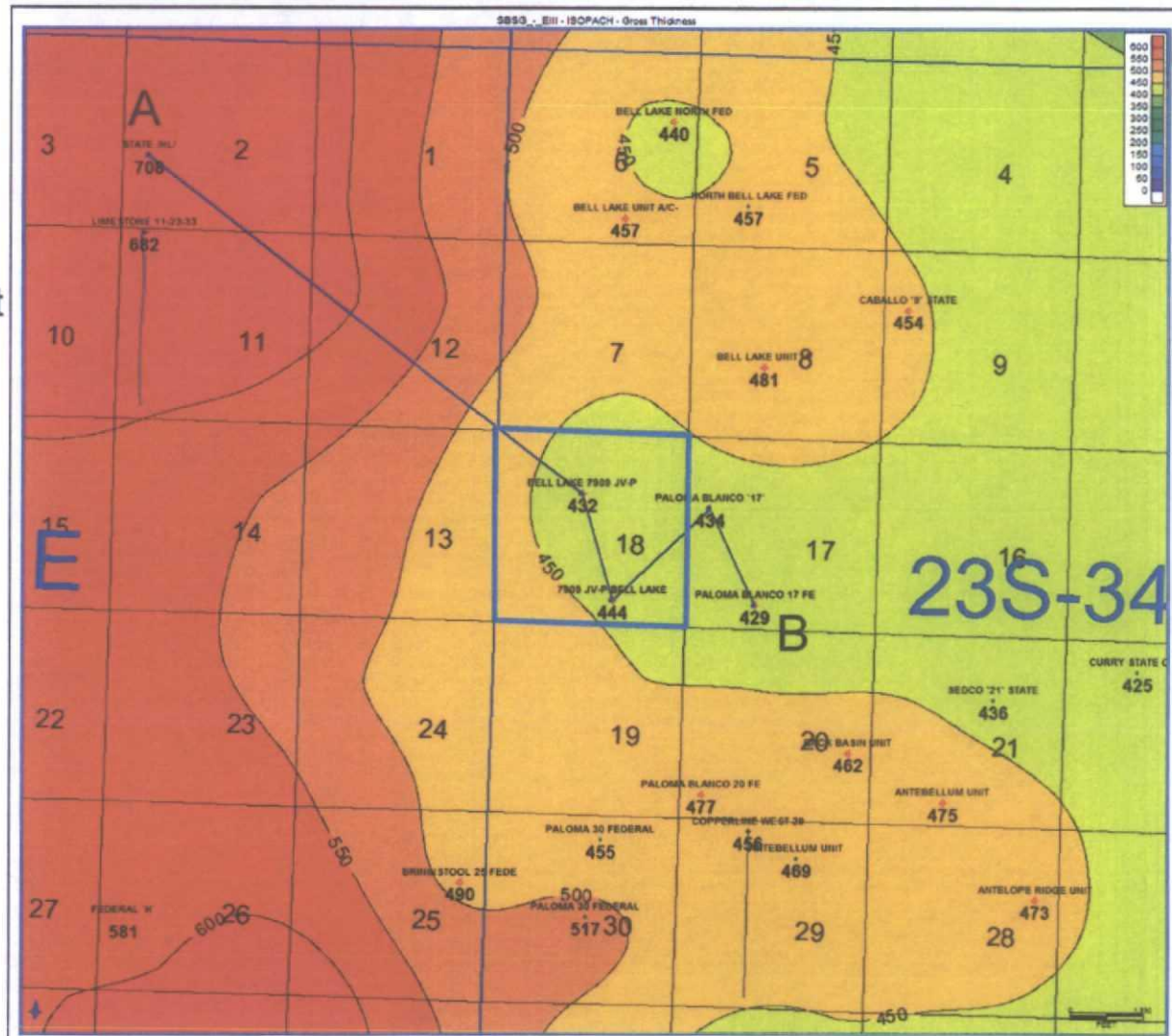


Bell Lake Area, Lea County, NM Regional Gross 2nd Bone Spring Isopach



- Contour interval: 50'
- Section 18 has consistent thickness
- Grids and Contours using regional dataset



BEFORE THE OIL
CONSERVATION DIVISION
Santa Fe, New Mexico
Exhibit No. 16

Submitted by: **CHEVRON USA INC.**
Hearing Date: February 20, 2014