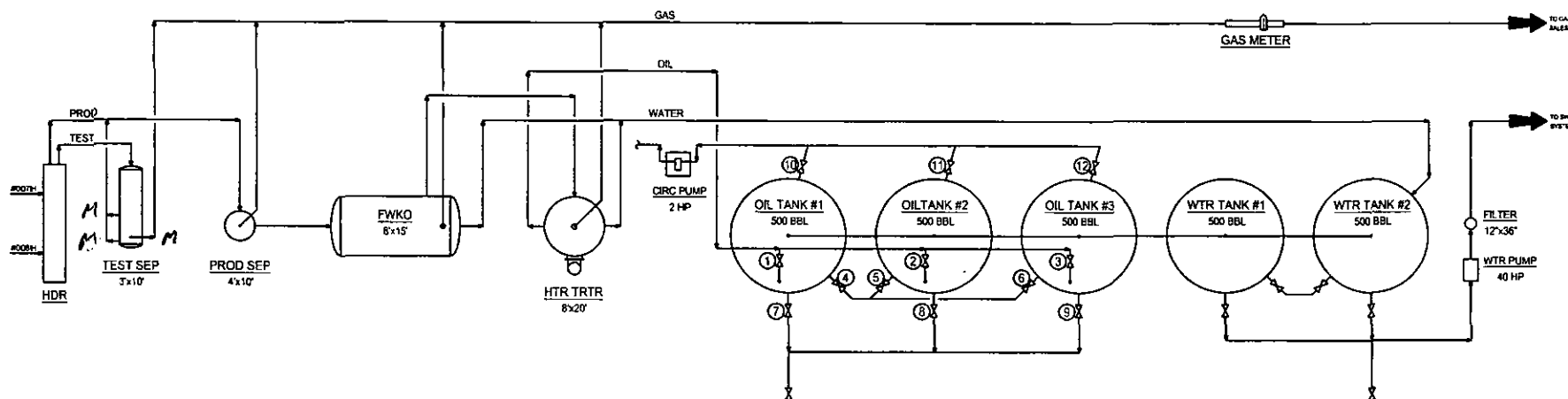


FALABELLA 31 FEE 8H BATTERY
SESE SECTION 31, T18S, R26E, UNIT P
EDDY COUNTY, NM

WELLS:


FALABELLA 31 FEE #007H: 30-015-39514
FALABELLA 31 FEE #008H: 30-015-39515



COG Operating LLC
Site Security Plans Located At:
One Concho Center
600 W. Illinois Ave.
Midland, TX 79701

Production Phase - Oil Tank #1
- Valve 1 open
- Valves 2 and 3 closed
- Valves 4, 5, and 6 open
- Valves 7, 8, and 9 closed
- Valves 10, 11, and 12 closed

Sales Phase - Oil Tank #1
- Valve 1 closed
- Valves 2 or 3 open
- Valve 4 closed
- Valves 5 and 6 open
- Valve 7 open
- Valves 8 and 9 closed
- Valves 10, 11, and 12 closed

NOTES	THIS DRAWING IS THE PROPERTY OF COG OPERATING LLC AND IS LOANED TO THE BORROWER FOR CONSTRUCTION USE ONLY AND IS SUBJECT TO RETURN UPON REQUEST AND SHALL NOT BE REPRODUCED, COPIED, LOANED OR OTHERWISE DISPOSED OF DIRECTLY OR INDIRECTLY, FOR ANY PURPOSE OTHER THAN THAT WHICH IT IS SPECIFICALLY PURCHASED.	COG OPERATING LLC 600 WEST ILLINOIS AVENUE MIDLAND, TEXAS 79701	CONFIDENTIALITY NOTICE		REFERENCE CHANGES				REVISIONS				DISSEMINATION RECORD				 NEW MEXICO SHELF ASSET PRODUCTION FACILITIES SITE FACILITY DIAGRAM FALABELLA 31 FEE 8H BATTERY SHEET COUNTY: _____ TOWN/RANGE: _____ MULTIPLE: _____ DWS NO.: _____ O-1700-61-005
			NO.	TITLE	NO.	DATE	DESCRIPTION	BY	CHK.	APP.	BY	DATE					
					A	08/01/13	ISSUE FOR SITE PERMITTING	CHP			DWS	08/01/13					
					B	08/08/14	UPDATED FOR FALABELLA 31 FEE 8H BATTERY	CHP			DWS	08/01/13					
											CHP						
											APP						
											APL WDR						
											PAUL BWS	C. BLEDINE					
											OTR BWS	VARIES					
											TRAILD	NONE					