

Goetze, Phillip, EMNRD

From: Ocean Munds-Dry <omundsdry@concho.com>
Sent: Wednesday, October 08, 2014 10:27 AM
To: Goetze, Phillip, EMNRD
Cc: jamesbruc@aol.com; Mike Feldewert; Wade, Gabriel, EMNRD
Subject: FW: BKU Dodd Plots Cases 14669 ,14670, 14758, 14759
Attachments: BKU Dodd Fed Unit Plots.pdf

Phillip – Please see attached production plots for the BKU and Dodd Pools, as you requested.

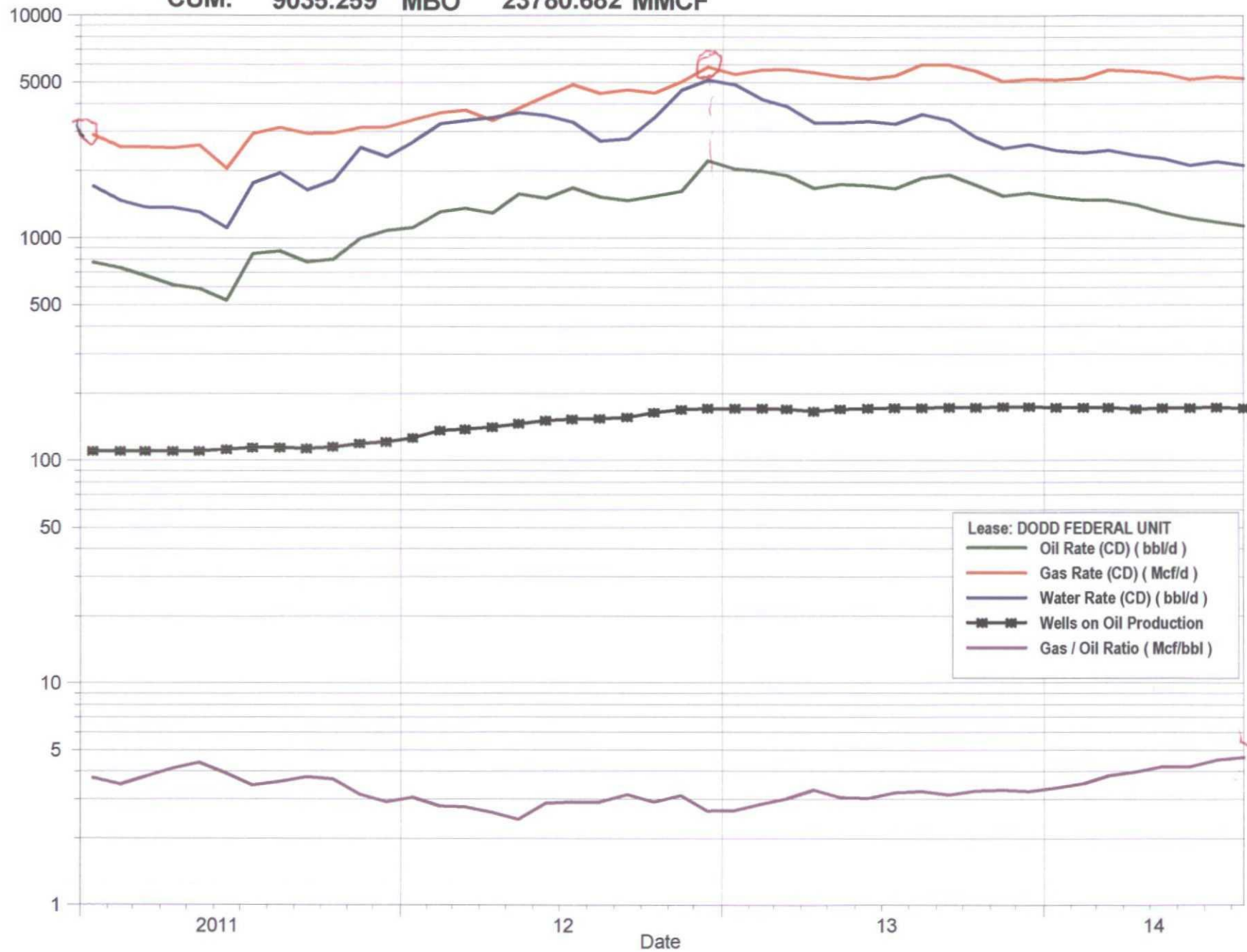
Thanks,
Ocean

Ocean Munds-Dry
Senior Attorney
COG OPERATING LLC
1048 Paseo de Peralta
Santa Fe NM 87501
Office 505.780.8000
Cell 505.920.5201
omundsdry@concho.com


CONFIDENTIALITY NOTICE: The information in this email may be confidential and/or privileged. If you are not the intended recipient or an authorized representative of the intended recipient, you are hereby notified that any review, dissemination or copying of this email and its attachments, if any, or the information contained herein, is prohibited. If you have received this email in error, please immediately notify the sender by return email and delete this email from your system. Thank you.

<Ambiguous>
<Ambiguous>
CUM: 9035.259 MBO 23780.682 MMCF

DODD FEDERAL UNIT
<Ambiguous>



<Ambiguous>
<Ambiguous>
CUM: 25191.256 MBO 74852.611 MMCF

BURCH KEELY UNIT
<Ambiguous>

