

**Goetze, Phillip, EMNRD**

---

**From:** Ocean Munds-Dry <omundsdry@concho.com>  
**Sent:** Wednesday, October 08, 2014 10:27 AM  
**To:** Goetze, Phillip, EMNRD  
**Cc:** jamesbruc@aol.com; Mike Feldewert; Wade, Gabriel, EMNRD  
**Subject:** FW: BKU Dodd Plots Cases 14669 ,14670, 14758, 14759  
**Attachments:** BKU Dodd Fed Unit Plots.pdf

Phillip – Please see attached production plots for the BKU and Dodd Pools, as you requested.

Thanks,  
Ocean

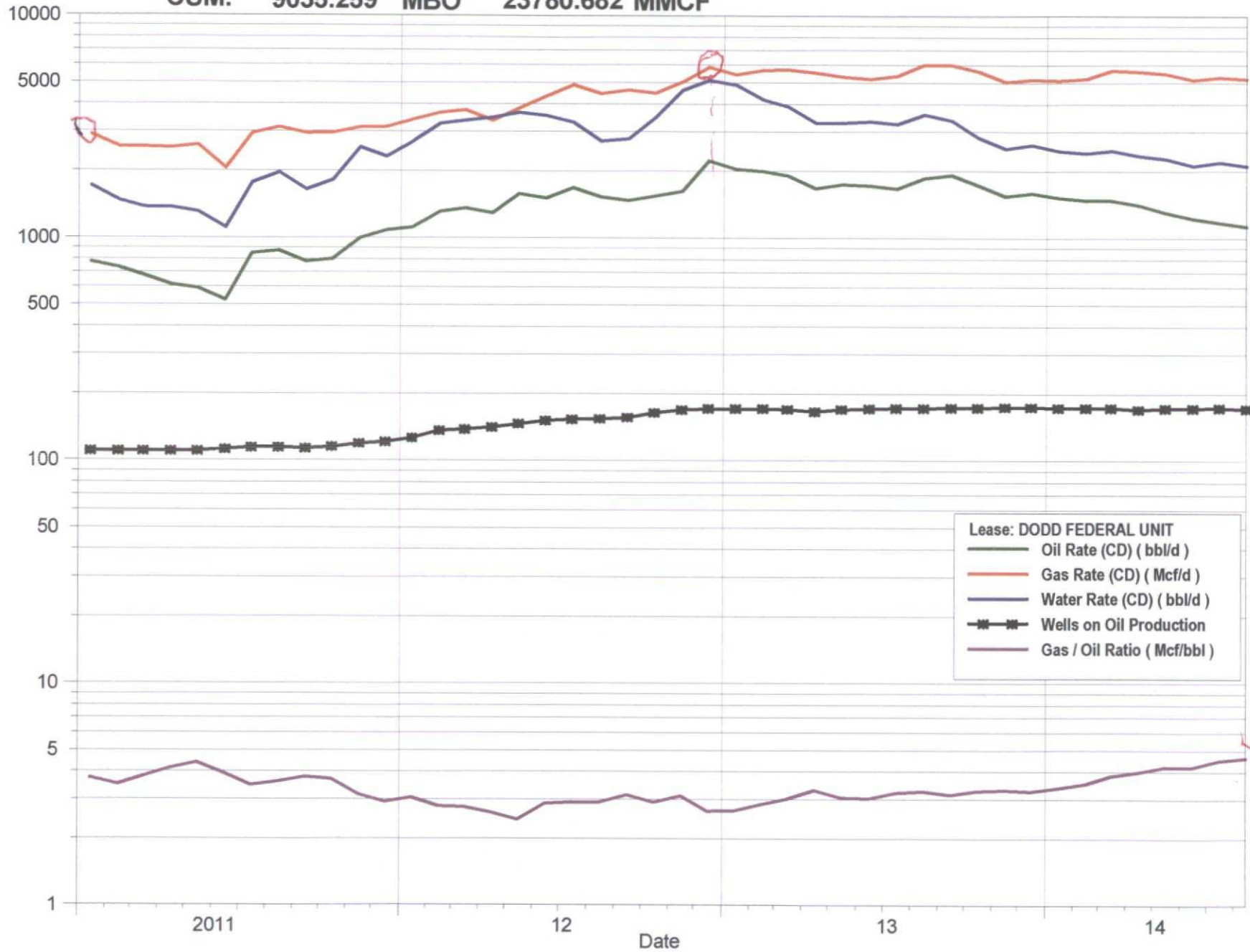
Ocean Munds-Dry  
Senior Attorney  
COG OPERATING LLC  
1048 Paseo de Peralta  
Santa Fe NM 87501  
Office 505.780.8000  
Cell 505.920.5201  
[omundsdry@concho.com](mailto:omundsdry@concho.com)



CONFIDENTIALITY NOTICE: The information in this email may be confidential and/or privileged. If you are not the intended recipient or an authorized representative of the intended recipient, you are hereby notified that any review, dissemination or copying of this email and its attachments, if any, or the information contained herein, is prohibited. If you have received this email in error, please immediately notify the sender by return email and delete this email from your system. Thank you.

<Ambiguous>  
<Ambiguous>  
CUM: 9035.259 MBO 23780.682 MMCF

DODD FEDERAL UNIT  
<Ambiguous>



<Ambiguous>  
<Ambiguous>  
CUM: 25191.256 MBO 74852.611 MMCF

# BURCH KEELY UNIT <Ambiguous>

