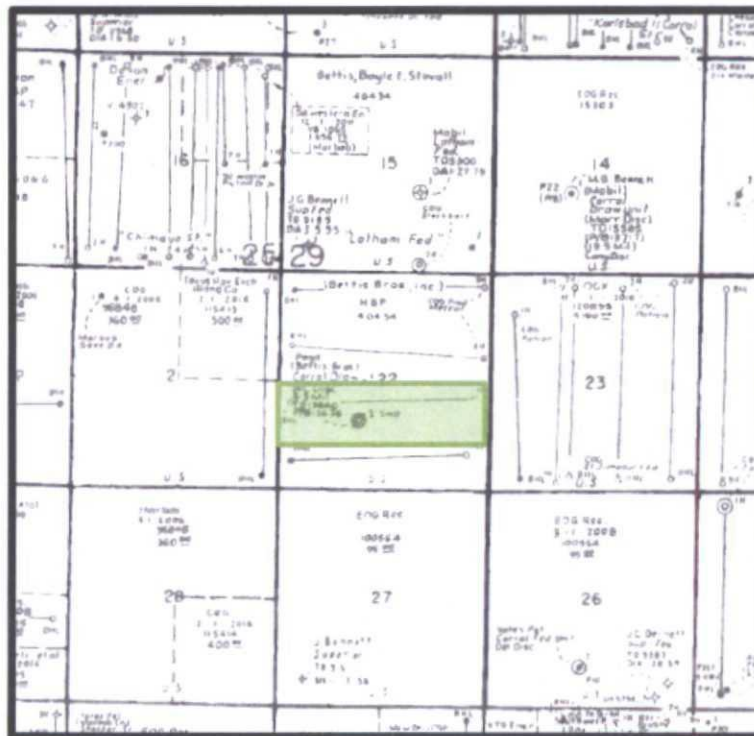


**Mescal 22 Federal #1H**  
**N/2S/2 Section 22, T25S, Range 29 East, Eddy County, NM**



**Working Interest Owners**

COG Operating LLC	25.000000%
OXY USA Inc.	25.000000%
H.M. Bettis, Inc.	2.083400%
Turnco, Inc.	2.083300%
HMJ Minerals, Inc.	2.083300%
The Allar Company	21.500000%
B.A.G.A.M. Ltd.	7.500000%
EOG Resources, Inc.	2.500000%
<b>Guinn Family Properties, Ltd.</b>	<b>1.000000%</b>
Sonic Oil & Gas LP	4.837500%
G.E. Rogers, LLC	0.650000%
B.F. Albritton, LLC	0.381250%
TC Energy, LLC	0.381250%
Stovall Energy, Ltd.	2.000000%
N.D. Stovall & Son, Ltd.	2.000000%
Stovall Investments, Inc.	1.000000%
	<b>100.000000%</b>