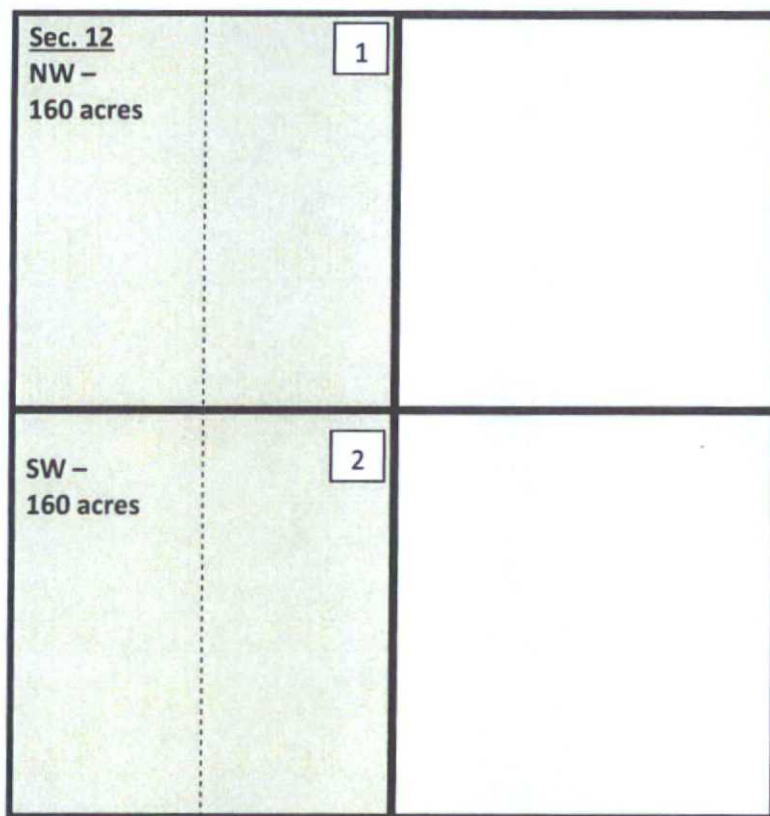


RESOLVER FED COM 1H & 2H  
T23S-R32E-Section 12, W/2 W/2 & E/2 W/2  
Lea County, NM



Tract 1- (160.00 acres)

COG Operating LLC - 100.00%

OCD Case No. 15380

COG OPERATING  
Exhibit #2

RESOLVER FED COM 1H & 2H  
T23S-R32E-Section 12, W/2 W/2 & E/2 W/2  
Lea County, NM

Tract 2- (160.00 acres)

**ConocoPhillips Co. – 100.00%**

UNIT RECAPITULATION T23S-R32E-Section 12, W/2 W/2 & E/2 W/2

COG Operating LLC – 50.00%

**ConocoPhillips Co. – 50.00%**

**Uncommitted owners in proposed non-standard spacing unit.**