

STATE OF NEW MEXICO
ENERGY, MINERALS AND NATURAL RESOURCES DEPARTMENT
OIL CONSERVATION DIVISION

APPLICATION OF ANSCHUTZ OIL COMPANY,
LLC FOR A NON-STANDARD OIL SPACING AND
PRORATION UNIT AND COMPULSORY POOLING,
RIO ARRIBA COUNTY, NEW MEXICO.

Case No. 15,318

APPLICATION OF ANSCHUTZ OIL COMPANY,
LLC FOR A NON-STANDARD OIL SPACING AND
PRORATION UNIT AND COMPULSORY POOLING,
RIO ARRIBA COUNTY, NEW MEXICO.

Case No. 15,319

VERIFIED STATEMENT OF MONICA STOEBER

Monica Stoeber, being duly sworn upon her oath, deposes and states:

1. I am over the age of 18, and have personal knowledge of the matters stated herein.
2. I am a geologist for Anschutz Oil Company, LLC, and I am familiar with the geological matters involved in these cases.
3. I have not previously been qualified as an expert petroleum geologist by the Division. My educational and employment background is as follows: I received a bachelor's degree in Geology from Western State College in Gunnison, Colorado in 2005. I have been employed by Anschutz Exploration Corporation and Anschutz Oil Company, LLC as a geotech from 2006 to 2012, and as a geologist since 2012.
4. The geological plats attached hereto show the following:
 - (a) Attachment A is a stratigraphic column of the San Juan Basin showing the Mancos Shale, Gallup Sandstone, and Dakota Sandstone. The primary targets of the wells in these two cases are the Gallup Sandstone and the Dakota Sandstone. The Gallup Sandstone is part of the Gavilan-Mancos Pool.
 - (b) Attachment B is a structure contour map with color isopach data of the Gallup Sandstone. It shows that the isopach thickness of the Gallup Sandstone in the area is generally greater than 200 feet, and that the structure is deeper to the northeast. The Gallup Sandstone is continuous and is approximately the same thickness in both Sections 1 and 24, Township 24 North, Range 2 West, NMPM.
 - (c) Attachment C is a structure contour map with color isopach data of the Dakota Sandstone. It shows that the isopach thickness of the Dakota Sandstone in the area is

Oil Conservation Division
Case No. 6
Exhibit No. 6

generally greater than 200 feet thick, and that the structure of the basin is deeper to the northwest. The Dakota Sandstone is continuous and approximately the same thickness in both Sections 1 and 24, Township 24 North, Range 2 West, NMPM.

Attachment C also shows a line of cross section from Section 24, Township 24 North, Range 2 West, NMPM, in the south, to Section 36, Township 25 North, Range 2 West, NMPM to the north. This cross section is displayed in Attachment D.

(b) Attachment D is the north-south cross section. It shows that both the Gallup and Dakota Sandstones can be correlated throughout the area of interest in these two cases.

CITY AND COUNTY OF DENVER)
) ss.
COUNTY OF COLORADO)

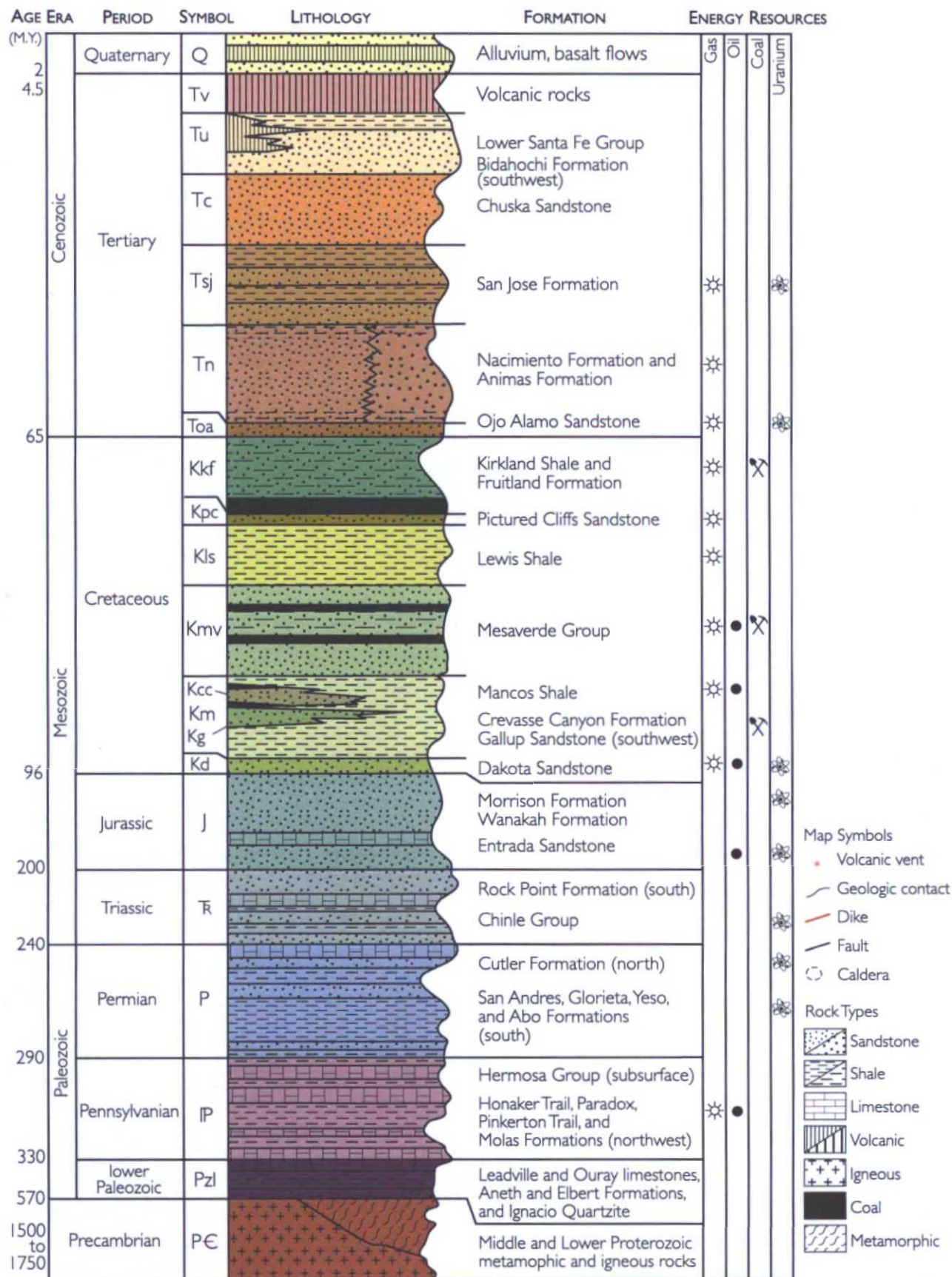
Monica Stoeber, being duly sworn upon her oath, deposes and states that: She is a geologist for Anschutz Oil Company, LLC; she is authorized to make this verification on its behalf; she has read the foregoing statement, and knows the contents thereof; and the same is true and correct to the best of her knowledge, information, and belief.

Monica Stoeber
Monica Stoeber

SUBSCRIBED AND SWORN TO before me this 10th day of June, 2015 by Monica Stoeber

My Commission Expires: June 1, 2017 Karen S. Martin
Notary Public

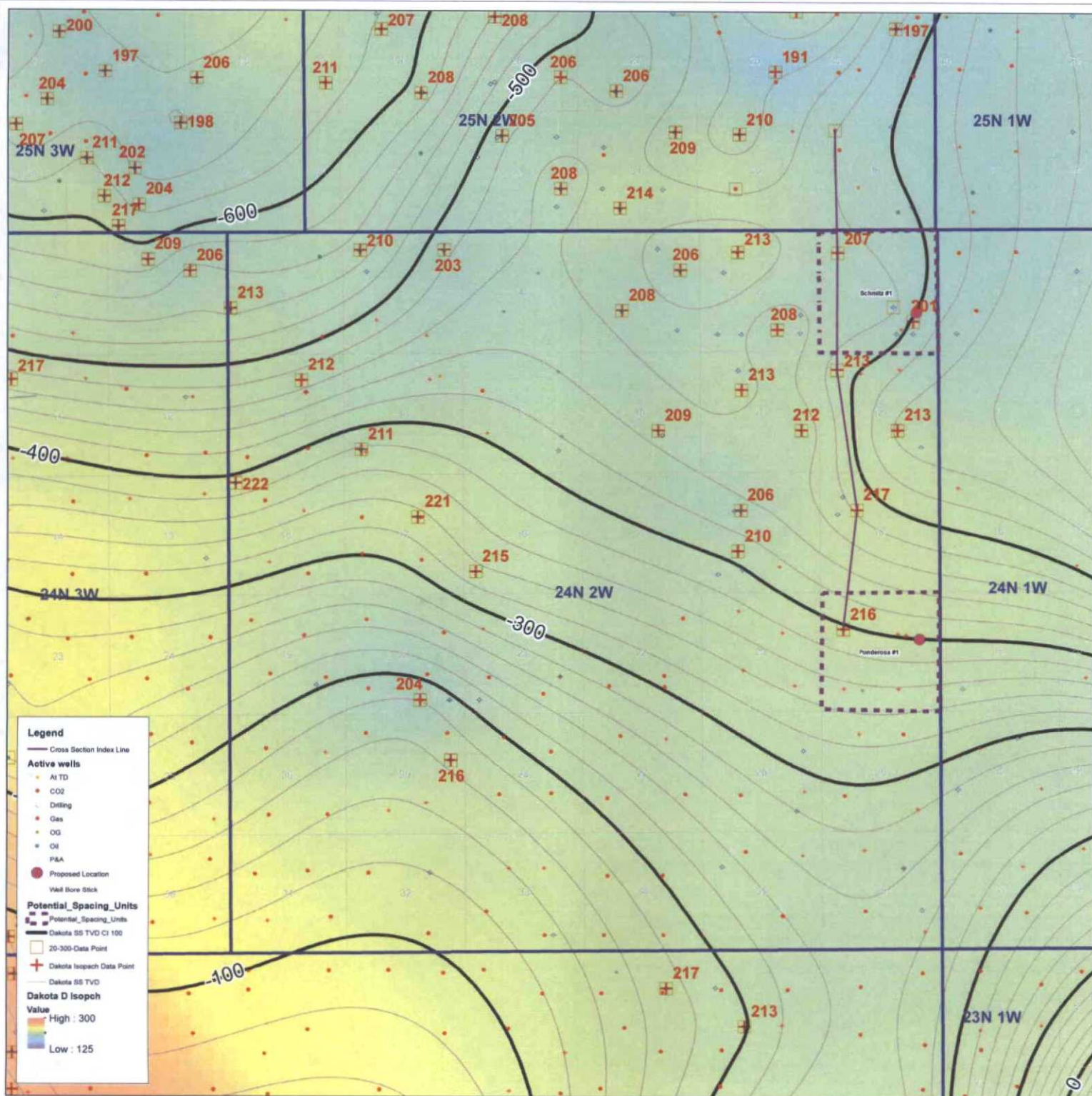
KAREN S. MARTIN
NOTARY PUBLIC
STATE OF COLORADO
NOTARY ID 20054018147
MY COMMISSION EXPIRES JUNE 1, 2017



A



13



Path: U:\Anstrol\Projects\New Mexico\San_Juan_Basin\ArcView\Maps\Exhibits\NMCOD_Exhibit_Ponderosa_AreaDakota.mxd



0 1 2 Miles

Ponderosa #1 & Schmitz #1
Dakota Structure SS TVD with Isopach color fill
Rio Arriba County, New Mexico



C

South

North

30039234410000 5296 ft 30039236040000 6199 ft 30039235840000 5148 ft 30039239760000 5400 ft 30039238610000

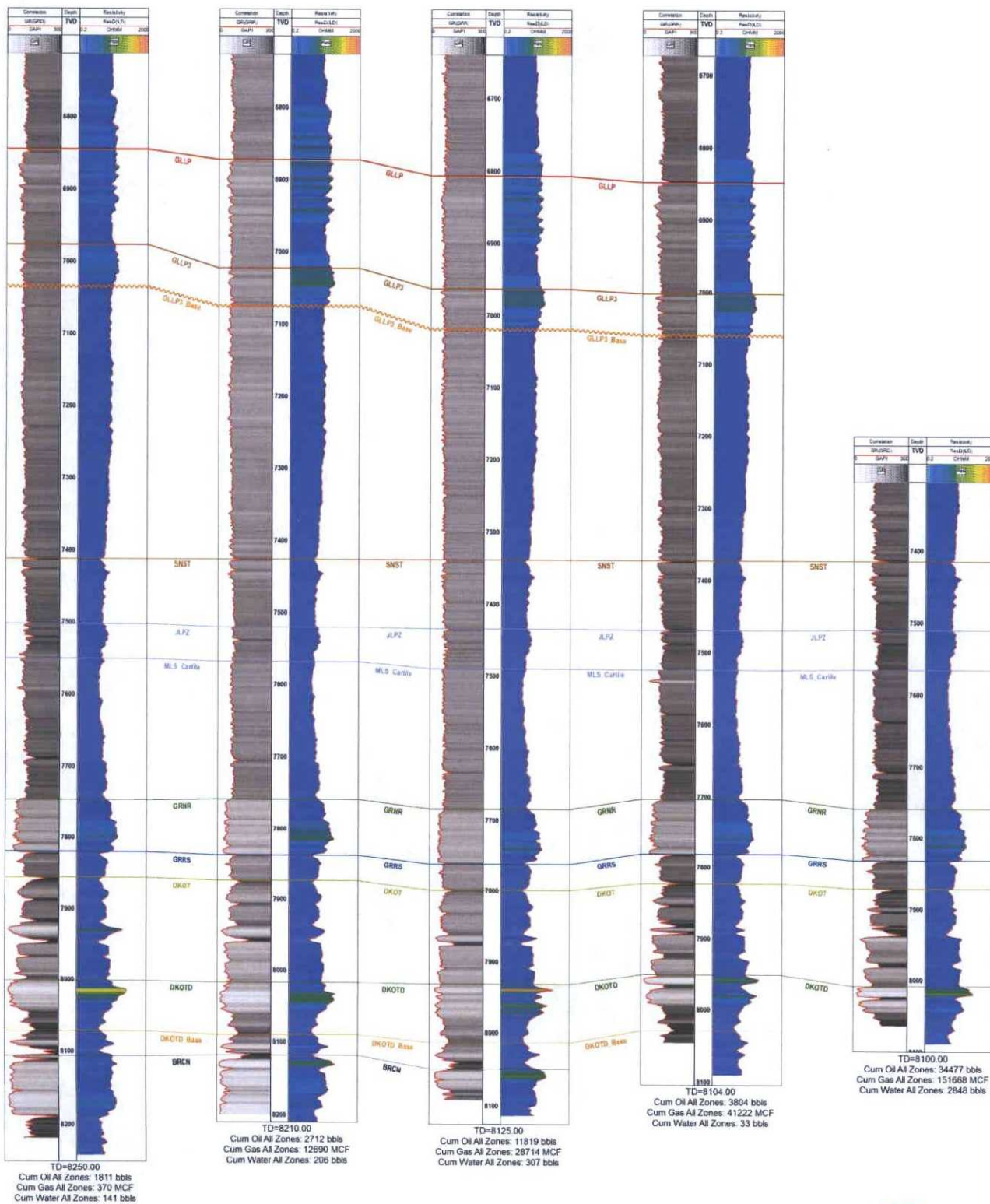
AMOCO PROD CO
AMOCO-FEDERAL-OSO 1
1650 FNL 990 FWL
TWP: 24 N - Range: 2 W - Sec: 24

MERRION O&G CORP
OSO CANYON GAS COM 1
1650 FNL 1650 FWL
TWP: 24 N - Range: 2 W - Sec: 13

MCHUGH JEROME P
BOYD AND LOLA 2
790 FNL 790 FWL
TWP: 24 N - Range: 2 W - Sec: 12

MESA GRANDE RES INC
FEDERAL INVADER 1
1040 FNL 850 FWL
TWP: 24 N - Range: 2 W - Sec: 1

SOUTHLAND ROYALTY CO
HILL FEDERAL 3
790 FNL 790 FWL
TWP: 25 N - Range: 2 W - Sec: 36



D