

RECEIVED OGD

January 21, 2016

2016 JAN 25 P 2: 31

U.S. Department of the Interior  
Attn: Jim Lovato  
Bureau of Land Management  
6251 College Blvd  
Farmington, Nm 87402

New Mexico Oil Conservation Division  
1220 S. St. Francis Drive  
Santa Fe, NM 87505  
Attention: Will Jones  
Senior Petroleum Geologist

Director  
Jicarilla Apache Oil & Gas Administration  
P.O. Box 146  
Dulce, NM 87528

Santa Fe National Forest  
Cuba Ranger District  
P.O. Box 130  
Cuba, NM 87013

R: 6409  
C: 6943

Re: EAST PUERTO CHIQUITO MANCOS  
UNIT 2016 PLAN OF DEVELOPMENT

To Whom It May Concern:

Set out below is Summary of Operations for 2015 and Operator's Plan of Development for 2016.


1. Summary of 2015 Operations:  
No changes have been made in the geologic interpretations, wells or participating area boundaries so no new maps are submitted.  
No new wells were drilled.  
No additional wells have been plugged.  
2015 operations for individual wells are detailed on attached schedule.
2. Listing of status of all wells as of December 31, 2015 is enclosed here as Schedule I.

3. Production and injection statistics are enclosed as Schedule II along with production and injection curves.
4. Plans for development.  
2015 production operations will continue generally unchanged from current operations.
5. Effectiveness of enhanced recovery project (water flood):  
Schedule II states the cumulative oil, gas and water production, and monthly water injection volumes as of December 31, 2015. Please note that gas injection was discontinued after February 2007.
6. Disposition of shut in wells:  
The EPCMU #13 (F-30) will be returned to production this Spring.

We hereby request your approval of this 2015 Plan of Development.

Sincerely,

BENSON-MONTIN-GREER DRILLING CORP.

By:   
Zach Stradling, Vice President

Enclosures

## Schedule I

## Status of East Puerto Chiquito Mancos Unit Wells 12/31/15

Well Name	Section - Twp - Range	Latitude/ Longitude	Status
#1 (L-29)	SW/SW Sec. 29, T-27N, R-1E	N36.31.317, W106.51.447	Plugged & Abandoned
#2 (G-29)	SW/NE Sec. 29, T-27N, R-1E	N36.31.557, W106.50.890	Producing
#3 (C-29)	NE/NW Sec. 29, T-27N, R-1E	N36.52845, W106.85293	Producing
#4 (K-29)	SE/SW Sec. 29, T-27N, R-1E	N36.31.359, W106.51.189	Plugged & Abandoned
#5 (A-29)	NE/NE Sec. 29, T-27N, R-1E	N36.31.715, W106.50.670	Plugged & Abandoned
#7 (N-20)	SE/SW Sec. 20, T-27N, R-1E	N36.31.933, W106.51.114	Producing
#8 (P-19)	SE/SE Sec. 19, T-27N, R-1E	N36.31.937, W106.51.744	Producing
#9 (H-30)	SE/NE Sec. 30, T-27N, R-1E	N36.31.502, W106.51.745	Producing
#10 (H-20)	SE/NE Sec. 20, T-27N, R-1E	N36.32.367, W106.50.671	Producing
#11 (P-20)	SE/SE Sec. 20, T-27N, R-1E	N36.31.968, W106.50.706	Producing
#12 (H-19)	SE/NE Sec. 19, T-27N, R-1E	N36.32.372, W106.51.744	Producing
#13 (F-30)	SE/NW Sec. 30, T-27N, R-1E	N36.31.521, W106.52.322	Shut In (Seasonal Producer)
#14 (N-19)	SE/SW Sec. 19, T-27N, R-1E	N36.31.934, W106.52.283	Plugged & Abandoned
#15 (M-21)	SW/SW Sec. 21, T-27N, R-1E	N36.31.876, W106.50.397	Plugged & Abandoned
#16 (C-28)	NE/NW Sec. 28, T-27N, R-1E	N36.31.736, W106.50.152	Producing
#17 (O-17)	SW/SE Sec. 17, T-27N, R-1E	N36.32.816, W106.50.916	Producing
#18 (P-13)	SE/SE Sec. 13, T-27N, R-1W	N36.32.848, W105.52.768	Producing
#19 (H-25)	SE/NE Sec. 25, T-27N, R-1W	N36.31.325, W106.52.858	Plugged & Abandoned
#20 (D-4)	NW/NW Sec. 4, T-26N, R-1E	N36.31.199, W106.50.881	Plugged & Abandoned
#21 (B-5)	NW/NE Sec. 5, T-26N, R-1E	N36.31.150, W106.51.344	Plugged & Abandoned
#22 (C-5)	NE/NW Sec. 5, T-26N, R-1E	N36.31.152, W106.51.655	Producing
#23 (H-6)	SE/NE Sec. 6, T-26N, R-1E	N36.31.010, W106.52.136	Plugged & Abandoned
#24 (F-6)	SE/NW Sec. 6, T-26N, R-1E	N36.30.855, W106.52.692	Plugged & Abandoned
#25 (I-6)	NE/SW Sec. 6, T-26N, R-1E	N36.30.740, W105.52.182	Plugged & Abandoned
#26 (F-5)	SE/NW Sec. 5, T-26N, R-1E	N36.31.001, W106.51.688	Plugged & Abandoned
#27 (H-5)	SE/NE Sec. 5, T-26N, R-1E	N36.30.988, W106.51.15fr	Plugged & Abandoned
#28 (D-9)	NW/NW Sec. 9, T-26N, R-1E	N36.30.285, W105.50.799	Producing
#29 (F-9)	SE/NW Sec. 9, T-26N, R-1E	N36.30.066, W106.50.543	Producing
#30 (I-8)	NE/SE Sec. 8, T-26N, R-1E	N36.29.842, W106.51.092	Producing
#31 (P-9)	SE/SE Sec. 9, T-26N, R-1E	N36.29.625, W106.50.108	Plugged & Abandoned
#32 (H-16)	SE/NE Sec. 16, T-26N, R-1E	N36.29.124, W106.50.004	Plugged & Abandoned
#33 (P-5)	SE/SE Sec. 5, T-26N, R-1E	N36.30.498, W106.51.091	Producing
#34 (K-5)	NE/SW Sec. 5, T-26N, R-1E	N36.51264, W106.8605	Producing
#35 (M-9)	SW/SW Sec. 9, T-26N, R-1E	N36.29.632, W106.50.819	Producing
#37 (C-8)	NE/NW Sec. 8, T-26N, R-1E	N36.30.289, W106.51.629	Producing
#38 (H-8)	SE/NE Sec. 8, T-26N, R-1E	N36.30.107, W106.51.095	Producing
#39 (E-21)	SW/NW Sec. 21, T-27N, R-1E	N36.32.394, W106.50.416	Producing
#40 (E-19)	SW/NW Sec. 19, T-27N, R-1E	N36.32.375, W106.52.545	Water Injection Well
#41 (F-20)	SE/NW Sec. 20, T-27N, R-1E	N36.32.369, W106.51.209	Producing
#42 (O-21)	SW/SE Sec. 21, T-27N, R-1E	N36.31.931, W106.49.854	Plugged & Abandoned
#43 (L-28)	SW/SW Sec. 28, T-27N, R-1E		Plugged & Abandoned
#44 (P-18)	SE/SE Sec. 18, T-27N, R-1E		Plugged & Abandoned

Summary of 2015 Work on East Puerto Chiquito Mancos Unit Wells

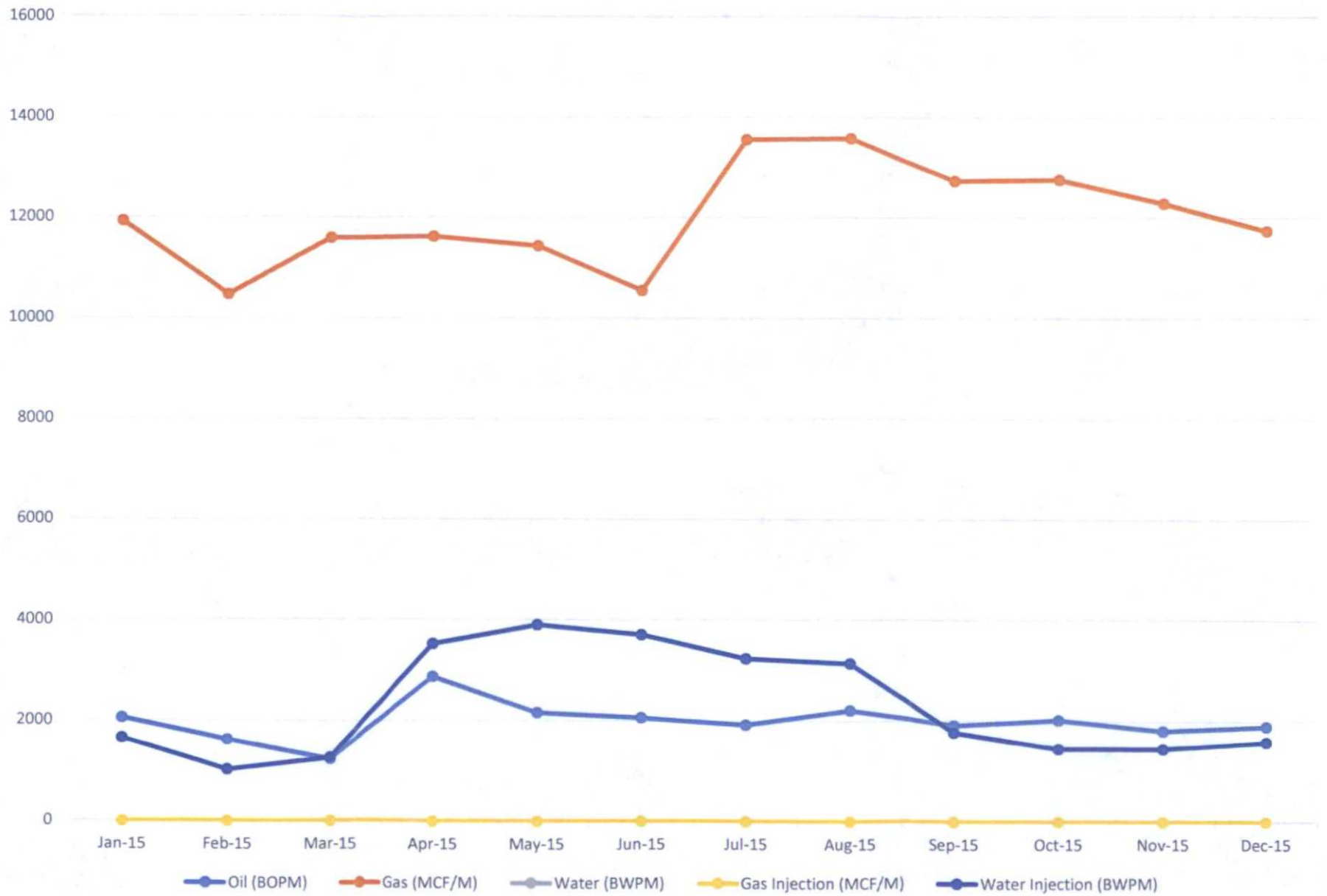
all in Rio Arriba County, NM

Well Name	Section - Twp - Range	Latitude/ Longitude	Summary of Work
#2 (G-29)	SW/NE Sec. 29, T27N R1E	N36.31.557, W106.50.890	
#3 (C-29)	NE/NW Sec. 29, T27N, R1E	N36.52845, W106.85293	
#7 (N-20)	SE/SW Sec. 20, T27N, R1E	N36.31.933, W106.51.114	
#8 (P-19)	SE/SE Sec. 19, T27N, R1E	N36.31.937, W106.51.744	
#9 (H-30)	SE/NE Sec. 30, T27N, R1E	N36.31.502, W106.51.745	
#10 (H-20)	SE/NE Sec. 20, T27N, R1E	N36.32.367, W106.50.671	
#11 (P-20)	SE/SE Sec. 20, T27N, R1E	N36.31.968, W106.50.706	
#12 (H-19)	SE/NE Sec. 19, T27N, R1E	N36.32.372, W106.51.744	Clean out paraffin and replace downhole pump
#13 (F-30)	SE/NW Sec. 30, T27N, R1E	N36.31.521, W106.52.322	
#16 (C-28)	NE/NW Sec. 28, T27N, R1E	N36.31.736, W106.50.152	
#17 (O-17)	SW/SE Sec. 17, T27N, R1E	N36.32.816, W106.50.916	Clean out paraffin and replace downhole pump
#18 (P-13)	SE/SE Sec. 13, T27N, R-1W	N36.32.848, W105.52.768	Replace downhole pump
#22 (C-5)	NE/NW Sec. 5, T26N, R1E	N36.31.152, W106.51.655	
#28 (D-9)	NW/NW Sec. 9, T26N, R1E	N36.30.285, W105.50.799	
#29 (F-9)	SE/NW Sec. 9, T26N, R1E	N36.30.066, W106.50.543	
#30 (I-8)	NE/SE Sec. 8, T26N, R1E	N36.29.842, W106.51.092	Clean out paraffin and replace downhole pump, rod repair and replace downhole pump
#33 (P-5)	SE/SE Sec. 5, T26N, R1E	N36.30.498, W106.51.091	
#34 (K-5)	NE/SW Sec. 5, T26N, R1E	N36.51264, W106.8605	Clean out paraffin and replace downhole pump
#35 (M-9)	SW/SW Sec. 9, T26N, R1E	N36.29.632, W106.50.819	Clean out paraffin and replace downhole pump
#37 (C-8)	NE/NW Sec. 8, T26N, R1E	N36.30.289, W106.51.629	
#38 (H-8)	SE/NE Sec. 8, T26N, R1E	N36.30.107, W106.51.095	
#39 (E-21)	SW/NW Sec. 21, T27N, R1E	N36.32.394, W106.50.416	Clean out paraffin and replace downhole pump
#40 (E-19)	SW/NW Sec. 19, T27N, R1E	N36.32.375, W106.52.545	
#41 (F-20)	SE/NW Sec. 20, T27N, R1E	N36.32.369, W106.51.209	Clean out paraffin and replace downhole pump
Battery #2	SE/SW Sec. 29, T27N, R1E	N36.5218, W106.85.577	

Schedule II  
2015 East Puerto Chiquito Mancos Unit Production

	Oil (BOPM)	Gas (MCF/M)	Water (BWPM)	Gas Injection (MCF/M)	Water Injection (BWPM)
January-15	2053	11920	1649	0	1649
February-15	1616	10471	1024	0	1024
March-15	1231	11591	1257	0	1257
April-15	2870	11616	3521	0	3521
May-15	2158	11435	3898	0	3898
June-15	2060	10559	3708	0	3708
July-15	1927	13534	3236	0	3236
August-15	2210	13558	3137	0	3137
September-15	1918	12716	1775	0	1775
October-15	2025	12744	1451	0	1451
November-15	1811	12279	1456	0	1456
December-15	1904	11737	1590	0	1590
Totals	23783	144160	27702	0	27702

2015 East Puerto Chiquito Mancos Production



## Rate/Time Graph

Summary Lease Report

