



RECEIVED OGD

January 29, 2016

New Mexico Oil and Gas Conservation Division
Attn: Daniel Sanchez
1220 South St. Francis Dr.
Santa Fe, NM 87505

Re: **2016 Plan of Development – Empire South Deep Unit**
Empire South Deep Unit (NM70946X)
Eddy County, New Mexico

Dear Mr. Sanchez:

Enclosed please find COG Operating LLC's ("COG") 2016 Plan of Development for the Empire South Deep Unit.

In 2015 there were no wells drilled and we have no plans for drilling wells in 2016.

The enclosed Plan of Development is submitted for your review and approval.

If you have any questions, please do not hesitate to contact me by phone at 432-685-2539 or by email at dpark@concho.com.

Respectfully,

COG OPERATING LLC

Dylan C. Park
Sr. Landman

R: 4185
C: 4578

Enclosures:

Summary of Operations

Exhibit A All COG Operated Wells as of the date of this letter
Exhibit A-1 Map of the Unit with Existing wells
Exhibit B Unit Production Plot
Exhibit C Facilities Map

CC:

Chevron USA Inc.
Attn: William N. Phillips
Reservoir Engineer - MCBU
1400 Smith Street
Houston, TX 77002

State of New Mexico
Commissioner of Public Lands
Attn: Terry Warnell, Director
310 Old Santa Fe Trail
Santa Fe, NM 87504-1148

**EMPIRE SOUTH DEEP UNIT
T17S,R28E-R29E & T18S,R28-29E
EDDY COUNTY, NM**

2016 PLAN OF DEVELOPMENT, COG OPERATING LLC ("COG")

Summary of Operations

Refer to Exhibit A-1, Plat of Empire South Deep Unit, for description of the Empire South Deep Unit Boundary, the status of existing Wolfcamp, Morrow and Atoka wells as of 1/11/2016.

1. COG OPERATED WELLS (COMPLETIONS):

All COG operated wells (completions) as of 1/11/2016 are itemized in **Exhibit "A"** submitted herewith. Accompanying map, Exhibit "**A-1**".

2. 2015 DRILLING ACTIVITY:

In 2015 there were no new wells drilled and we have no plans for drilling wells in 2016.

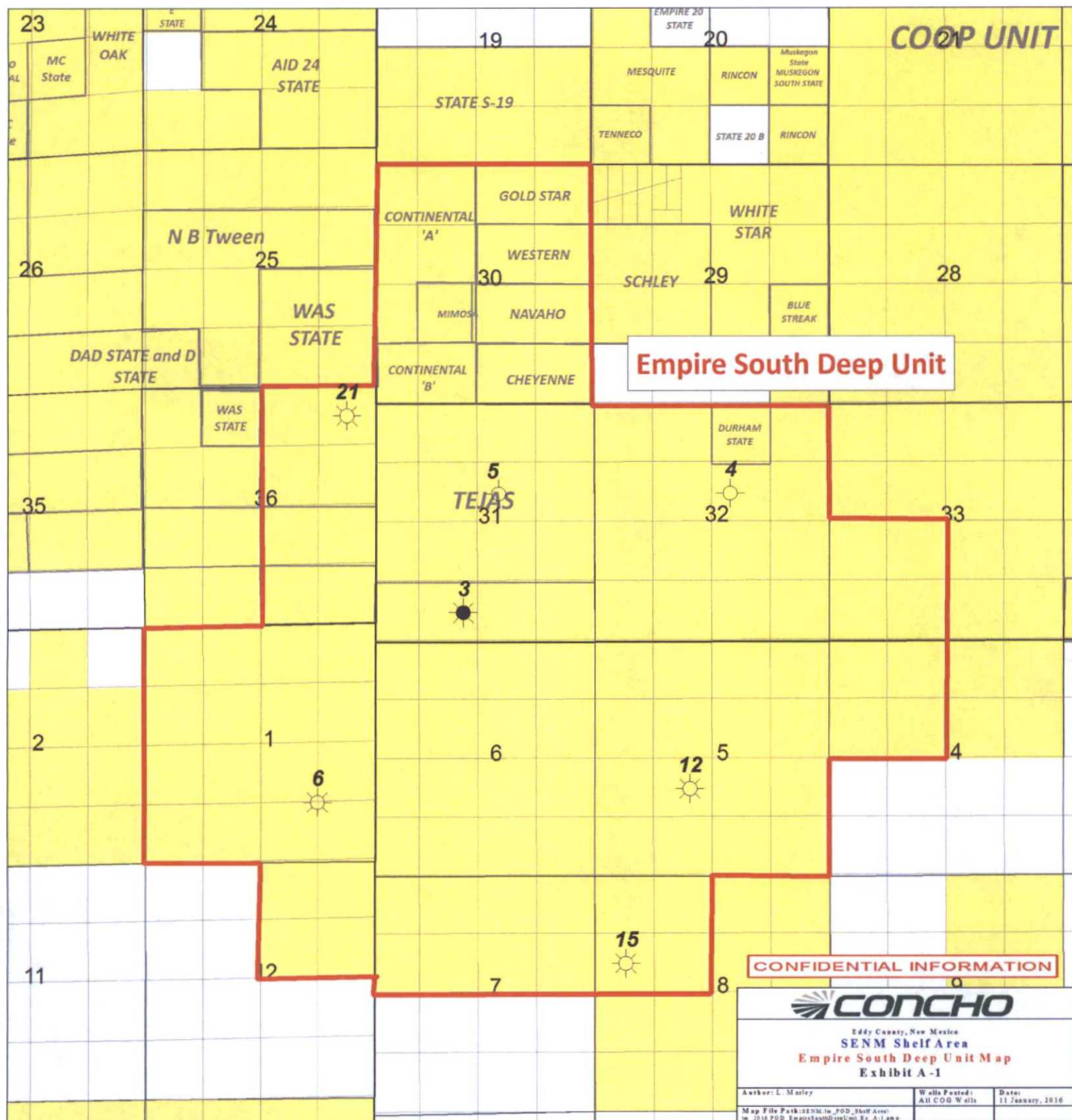
3. Exhibit "B" is Daily Production Plot of all the wells in the Empire South Deep Unit.

4. 2015 Empire South Deep Unit Facilities: Exhibit "C"

Exhibit "**C**" shows the existing facilities, roads and flow lines. Upgrades will be made to improve existing infrastructure and facility operations.

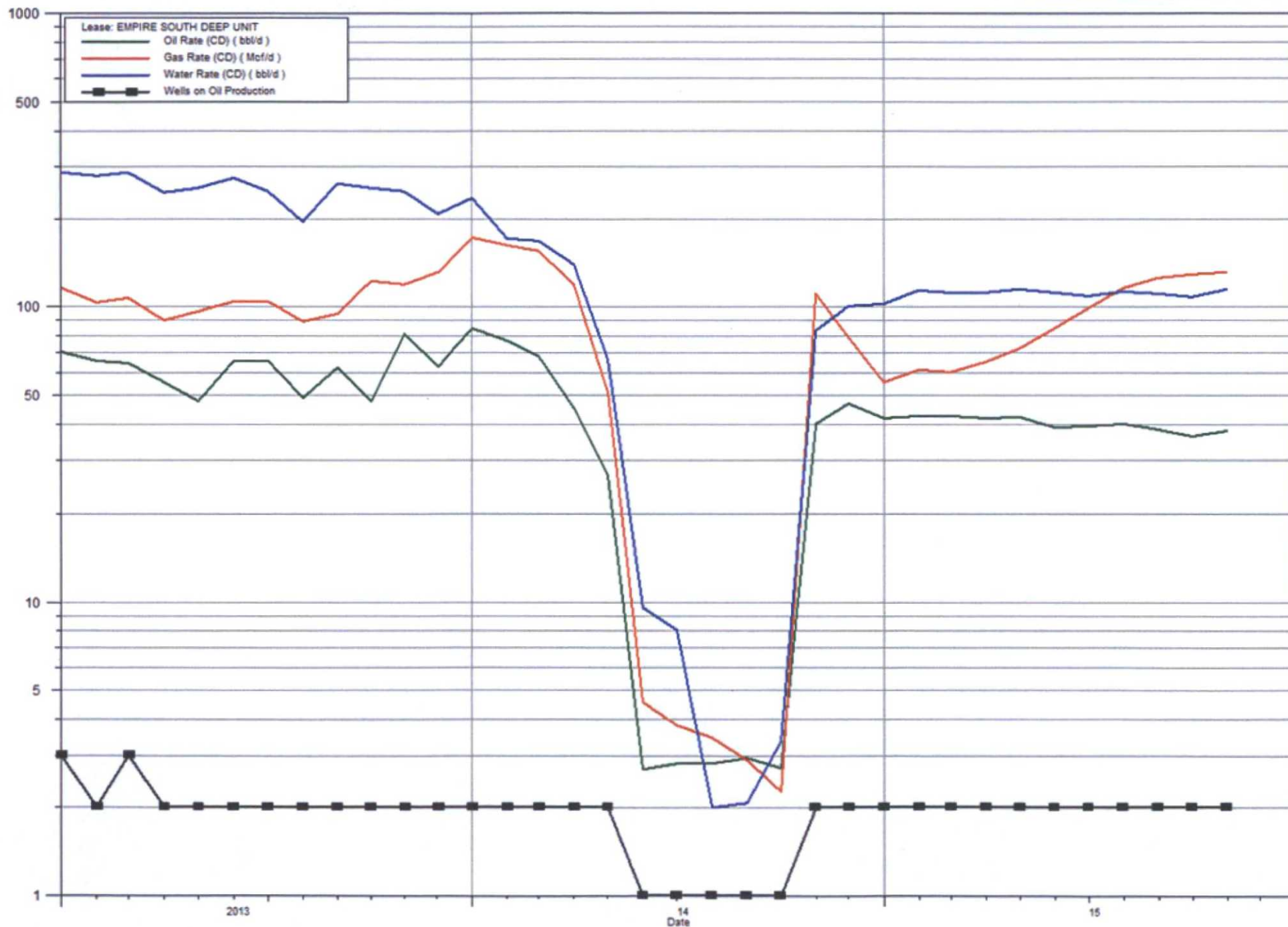
Exhibit A

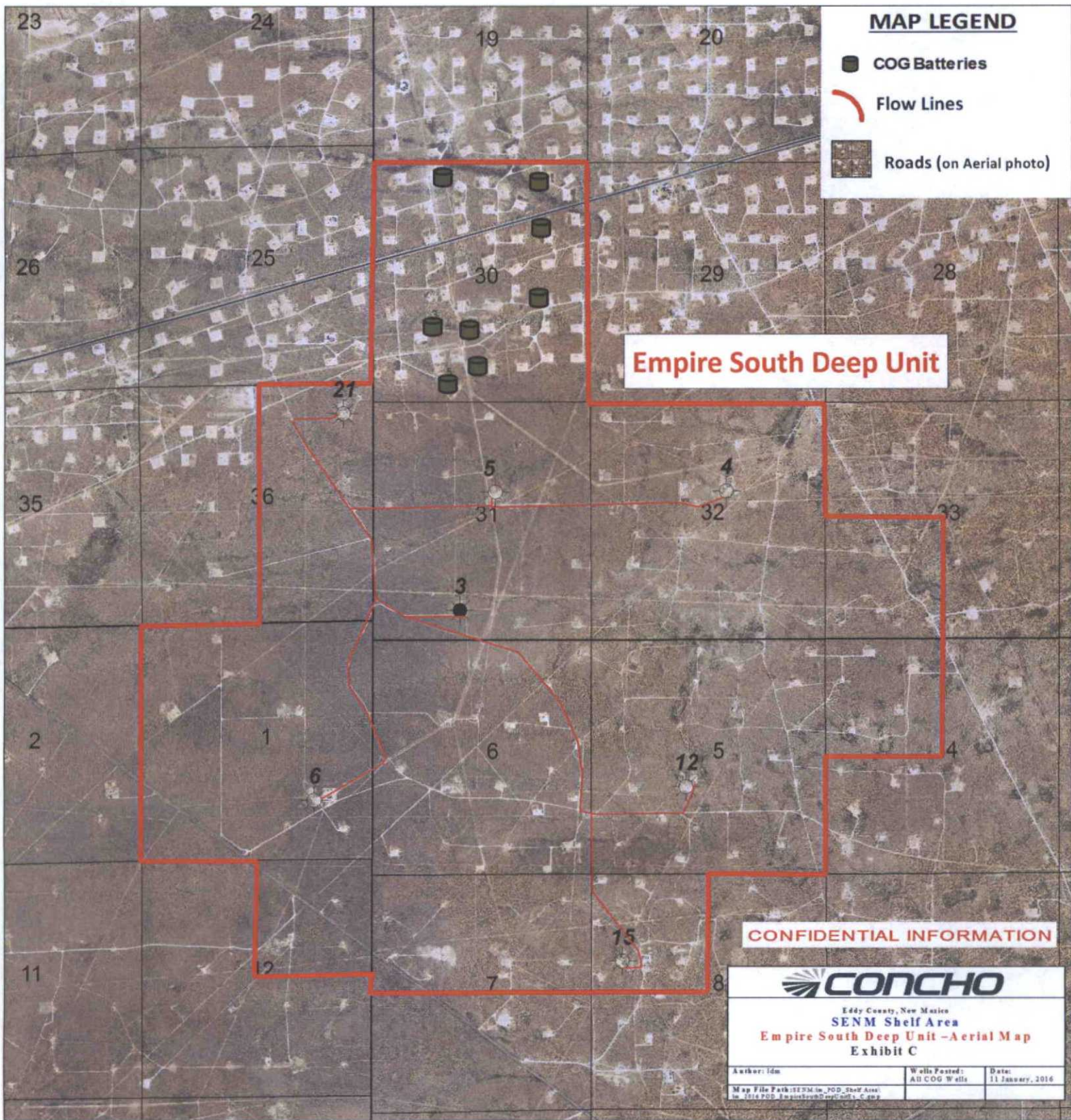
All active COG Operated wells in Empire South Deep Unit as of 1/11/16							CONFIDENTIAL INFORMATION			
	Operator	Well Name	Well #	Well ID	Field	Zone	Location	Type	Status	Comp Date
1	COG	EMPIRE SOUTH DEEP UNIT	3	300152068500	EMPIRE SOUTH	WFMP/MRRW	TWP: 17 S - Range: 29 E - Sec. 31	O&G	ACTIVE	8/15/1973
2	COG	EMPIRE SOUTH DEEP UNIT	4	300152096400	EMPIRE SOUTH	WFMP	TWP: 17 S - Range: 29 E - Sec. 32	GAS	PLUGGED	9/9/2011
3	COG	EMPIRE SOUTH DEEP UNIT	5	300152127900	EMPIRE SOUTH	MRRW	TWP: 17 S - Range: 29 E - Sec. 31	GAS	PLUGGED	11/15/1974
4	COG	EMPIRE SOUTH DEEP UNIT	6	300152156200	BEAR GRASS DRAW	ATOK/MRRW	TWP: 18 S - Range: 28 E - Sec. 1	GAS	ACTIVE	5/28/1993
5	COG	EMPIRE SOUTH DEEP UNIT	12	300152194700	BEAR GRASS DRAW	ATOK/MRRW	TWP: 18 S - Range: 29 E - Sec. 5	GAS	ACTIVE	4/2/1990
6	COG	EMPIRE SOUTH DEEP UNIT	15	300152223600	EMPIRE SOUTH	WFMP/MRRW	TWP: 18 S - Range: 29 E - Sec. 8	GAS	ACTIVE	9/7/1999
7	COG	EMPIRE SOUTH DEEP UNIT	21	300152347000	EMPIRE SOUTH	WFMP/MRRW	TWP: 17 S - Range: 28 E - Sec. 36	GAS	ACTIVE	6/29/2012



Empire South Deep Unit Exhibit B

CONFIDENTIAL INFORMATION





08
08

**EMPIRE SOUTH DEEP UNIT
T17S,R28E-R29E & T18S,R28-29E
EDDY COUNTY, NM**

2016 PLAN OF DEVELOPMENT, COG OPERATING LLC ("COG")

Summary of Operations

Refer to Exhibit A-1, Plat of Empire South Deep Unit, for description of the Empire South Deep Unit Boundary, the status of existing Wolfcamp, Morrow and Atoka wells as of 1/11/2016.

1. COG OPERATED WELLS (COMPLETIONS):

All COG operated wells (completions) as of 1/11/2016 are itemized in **Exhibit "A"** submitted herewith. Accompanying map, Exhibit "**A-1**".

2. 2015 DRILLING ACTIVITY:

In 2015 there were no new wells drilled and we have no plans for drilling wells in 2016.

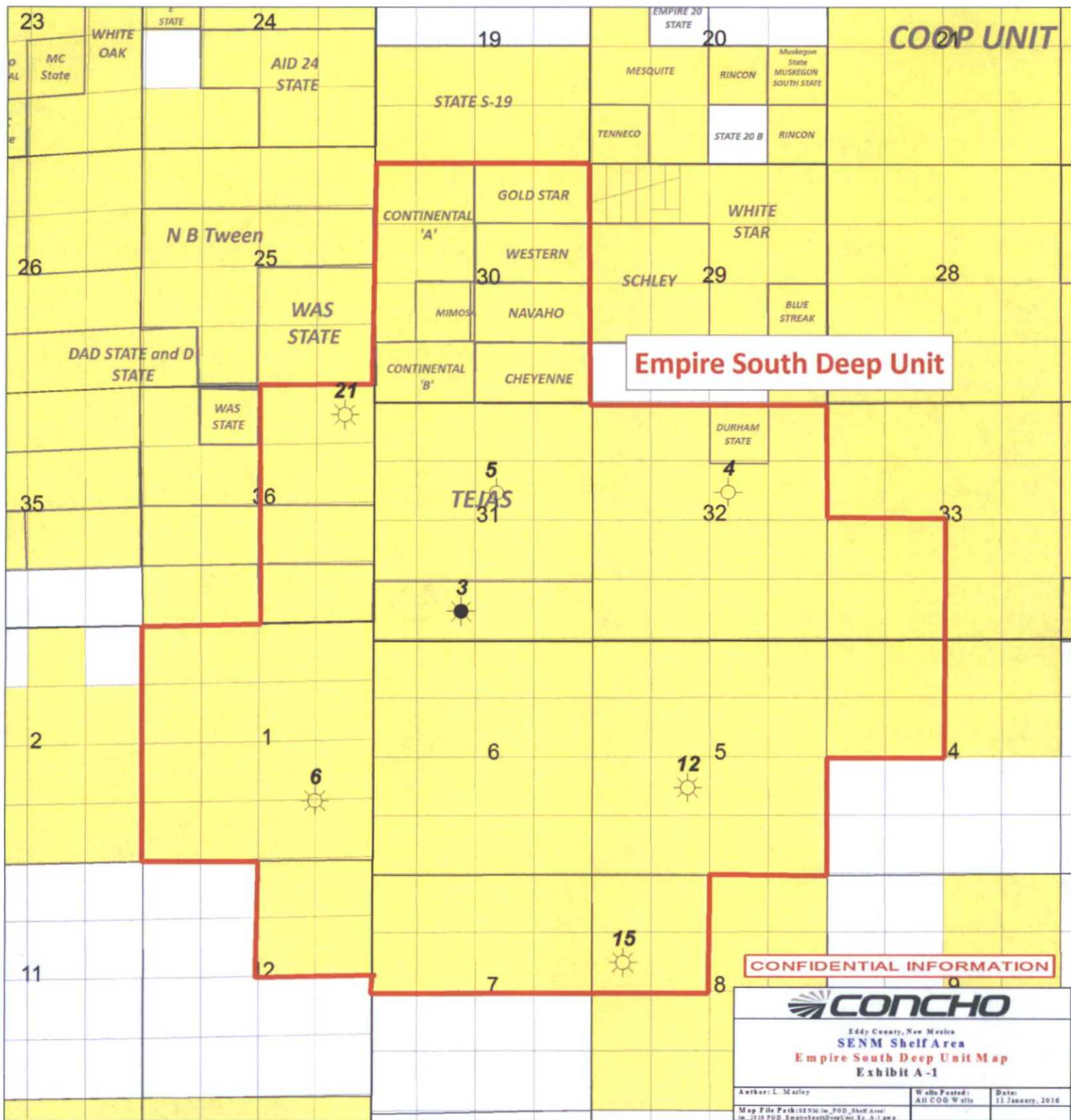
3. Exhibit "B" is Daily Production Plot of all the wells in the Empire South Deep Unit.

4. 2015 Empire South Deep Unit Facilities: Exhibit "C"

Exhibit "**C**" shows the existing facilities, roads and flow lines. Upgrades will be made to improve existing infrastructure and facility operations.

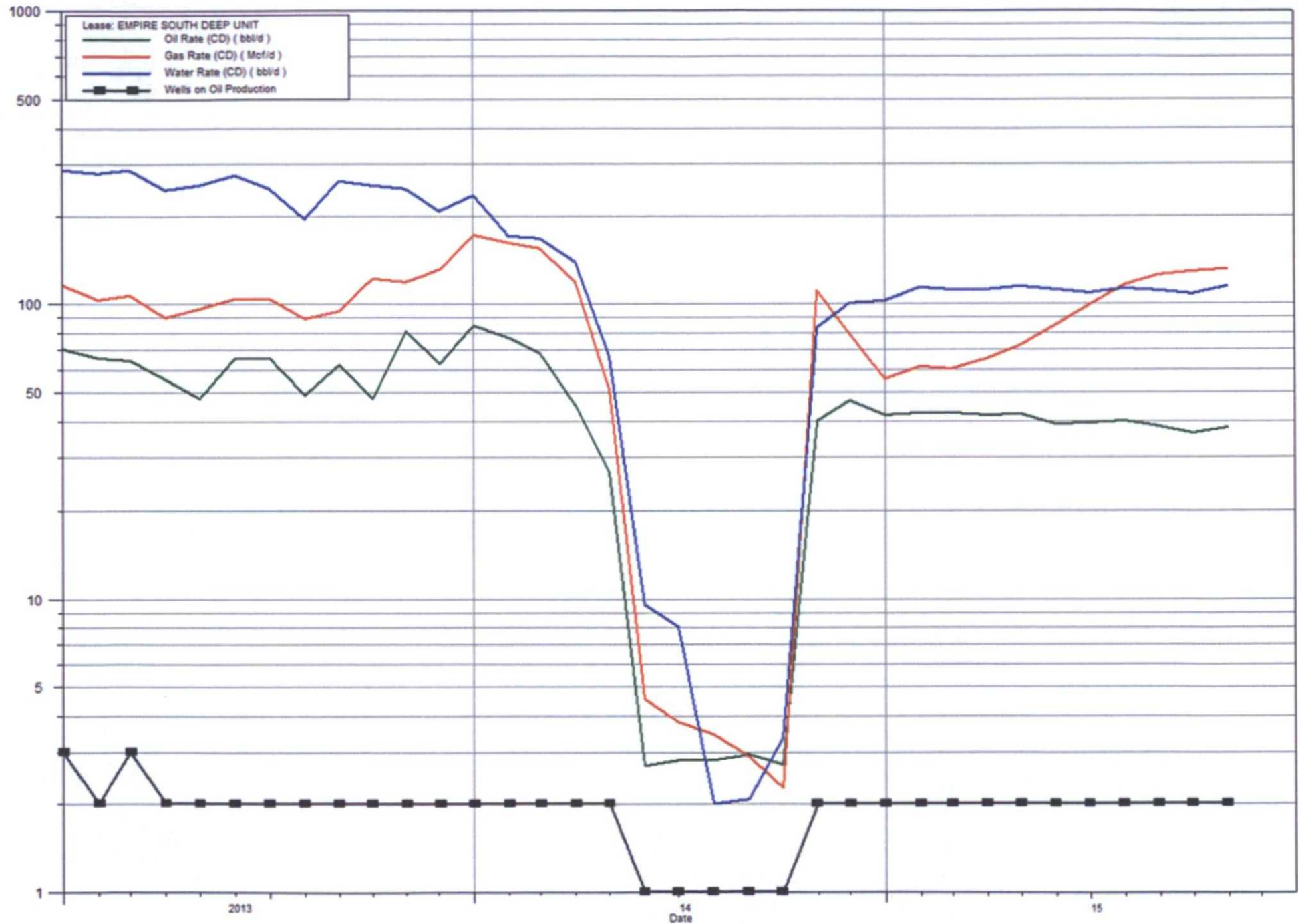
Exhibit A

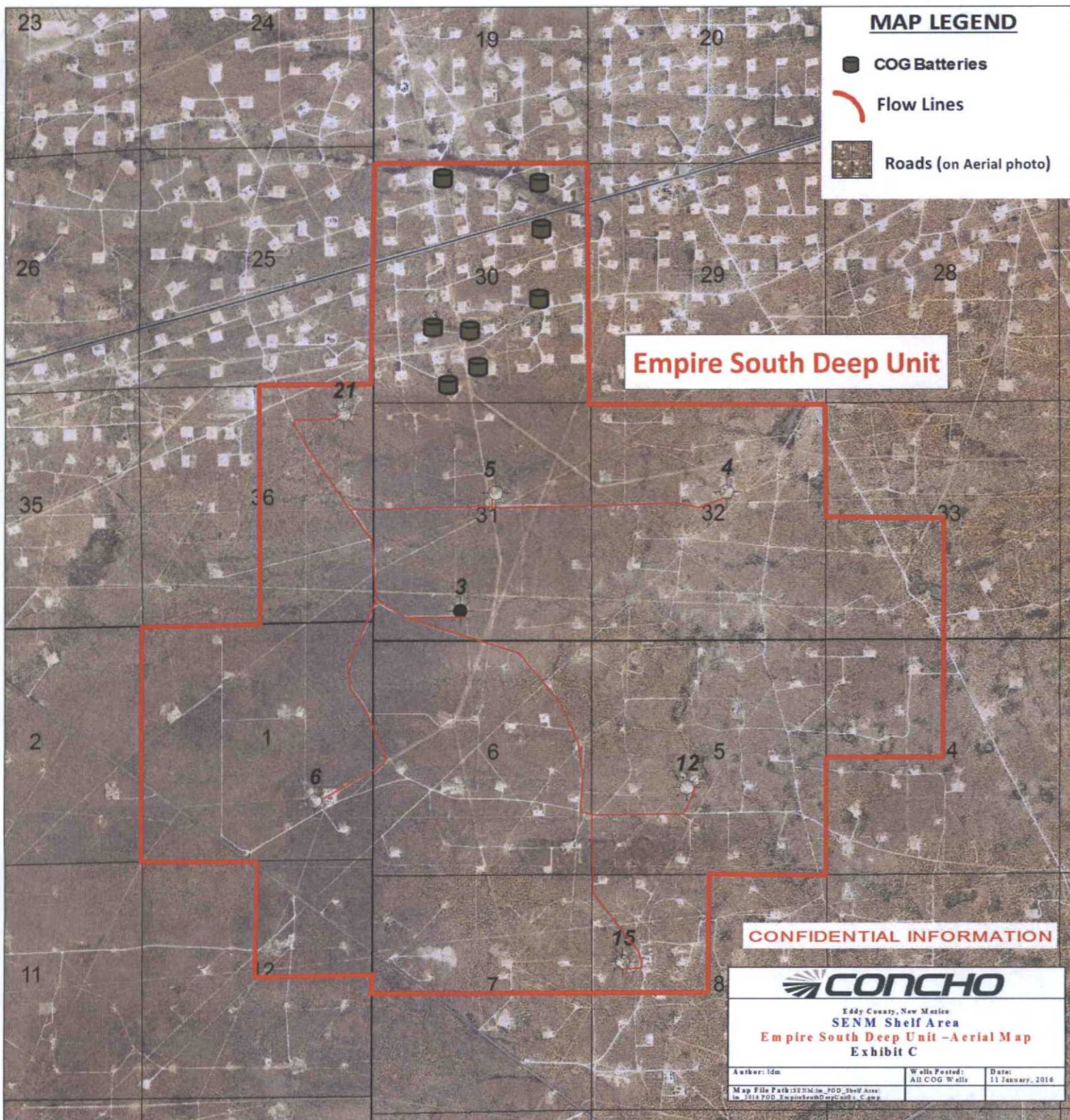
All active COG Operated wells in Empire South Deep Unit as of 1/11/16						CONFIDENTIAL INFORMATION				
	Operator	Well Name	Well #	Well ID	Field	Zone	Location	Type	Status	Comp Date
1	COG	EMPIRE SOUTH DEEP UNIT	3	300152068500	EMPIRE SOUTH	WFMP/MRRW	TWP: 17 S - Range: 29 E - Sec. 31	O&G	ACTIVE	8/15/1973
2	COG	EMPIRE SOUTH DEEP UNIT	4	300152096400	EMPIRE SOUTH	WFMP	TWP: 17 S - Range: 29 E - Sec. 32	GAS	PLUGGED	9/9/2011
3	COG	EMPIRE SOUTH DEEP UNIT	5	300152127900	EMPIRE SOUTH	MRRW	TWP: 17 S - Range: 29 E - Sec. 31	GAS	PLUGGED	11/15/1974
4	COG	EMPIRE SOUTH DEEP UNIT	6	300152156200	BEAR GRASS DRAW	ATOK/MRRW	TWP: 18 S - Range: 28 E - Sec. 1	GAS	ACTIVE	5/28/1993
5	COG	EMPIRE SOUTH DEEP UNIT	12	300152194700	BEAR GRASS DRAW	ATOK/MRRW	TWP: 18 S - Range: 29 E - Sec. 5	GAS	ACTIVE	4/2/1990
6	COG	EMPIRE SOUTH DEEP UNIT	15	300152223600	EMPIRE SOUTH	WFMP/MRRW	TWP: 18 S - Range: 29 E - Sec. 8	GAS	ACTIVE	9/7/1999
7	COG	EMPIRE SOUTH DEEP UNIT	21	300152347000	EMPIRE SOUTH	WFMP/MRRW	TWP: 17 S - Range: 28 E - Sec. 36	GAS	ACTIVE	6/29/2012



Empire South Deep Unit Exhibit B

CONFIDENTIAL INFORMATION





**EMPIRE SOUTH DEEP UNIT
T17S,R28E-R29E & T18S,R28-29E
EDDY COUNTY, NM**

2016 PLAN OF DEVELOPMENT, COG OPERATING LLC ("COG")

Summary of Operations

Refer to Exhibit A-1, Plat of Empire South Deep Unit, for description of the Empire South Deep Unit Boundary, the status of existing Wolfcamp, Morrow and Atoka wells as of 1/11/2016.

1. COG OPERATED WELLS (COMPLETIONS):

All COG operated wells (completions) as of 1/11/2016 are itemized in **Exhibit "A"** submitted herewith. Accompanying map, Exhibit "**A-1**".

2. 2015 DRILLING ACTIVITY:

In 2015 there were no new wells drilled and we have no plans for drilling wells in 2016.

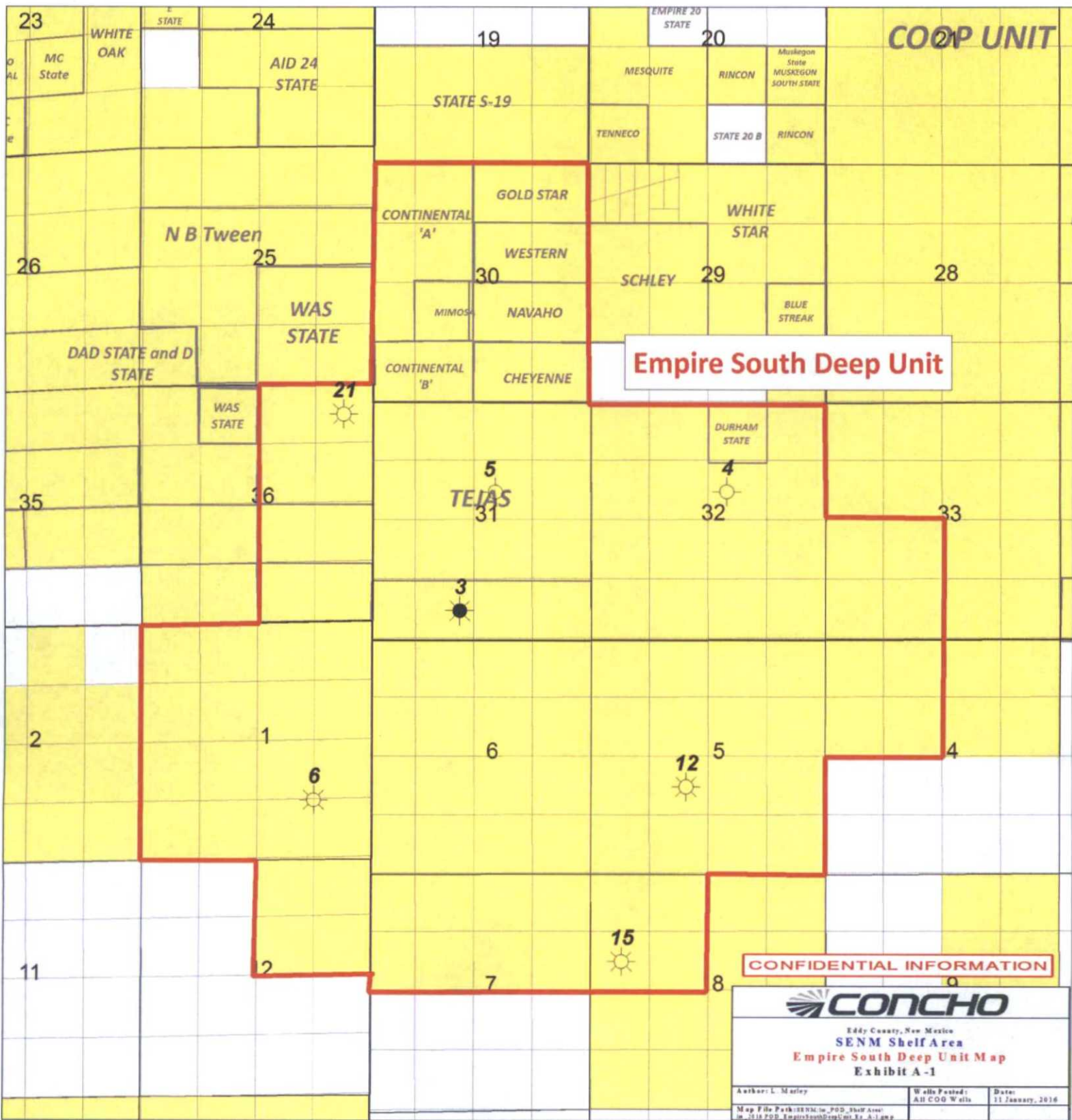
3. Exhibit "B" is Daily Production Plot of all the wells in the Empire South Deep Unit.

4. 2015 Empire South Deep Unit Facilities: Exhibit "C"

Exhibit "C" shows the existing facilities, roads and flow lines. Upgrades will be made to improve existing infrastructure and facility operations.

Exhibit A

All active COG Operated wells in Empire South Deep Unit as of 1/11/16						CONFIDENTIAL INFORMATION				
	Operator	Well Name	Well #	Well ID	Field	Zone	Location	Type	Status	Comp Date
1	COG	EMPIRE SOUTH DEEP UNIT	3	300152068500	EMPIRE SOUTH	WFMP/MRRW	TWP: 17 S - Range: 29 E - Sec. 31	O&G	ACTIVE	8/15/1973
2	COG	EMPIRE SOUTH DEEP UNIT	4	300152096400	EMPIRE SOUTH	WFMP	TWP: 17 S - Range: 29 E - Sec. 32	GAS	PLUGGED	9/9/2011
3	COG	EMPIRE SOUTH DEEP UNIT	5	300152127900	EMPIRE SOUTH	MRRW	TWP: 17 S - Range: 29 E - Sec. 31	GAS	PLUGGED	11/15/1974
4	COG	EMPIRE SOUTH DEEP UNIT	6	300152156200	BEAR GRASS DRAW	ATOK/MRRW	TWP: 18 S - Range: 28 E - Sec. 1	GAS	ACTIVE	5/28/1993
5	COG	EMPIRE SOUTH DEEP UNIT	12	300152194700	BEAR GRASS DRAW	ATOK/MRRW	TWP: 18 S - Range: 29 E - Sec. 5	GAS	ACTIVE	4/2/1990
6	COG	EMPIRE SOUTH DEEP UNIT	15	300152223600	EMPIRE SOUTH	WFMP/MRRW	TWP: 18 S - Range: 29 E - Sec. 8	GAS	ACTIVE	9/7/1999
7	COG	EMPIRE SOUTH DEEP UNIT	21	300152347000	EMPIRE SOUTH	WFMP/MRRW	TWP: 17 S - Range: 28 E - Sec. 36	GAS	ACTIVE	6/29/2012



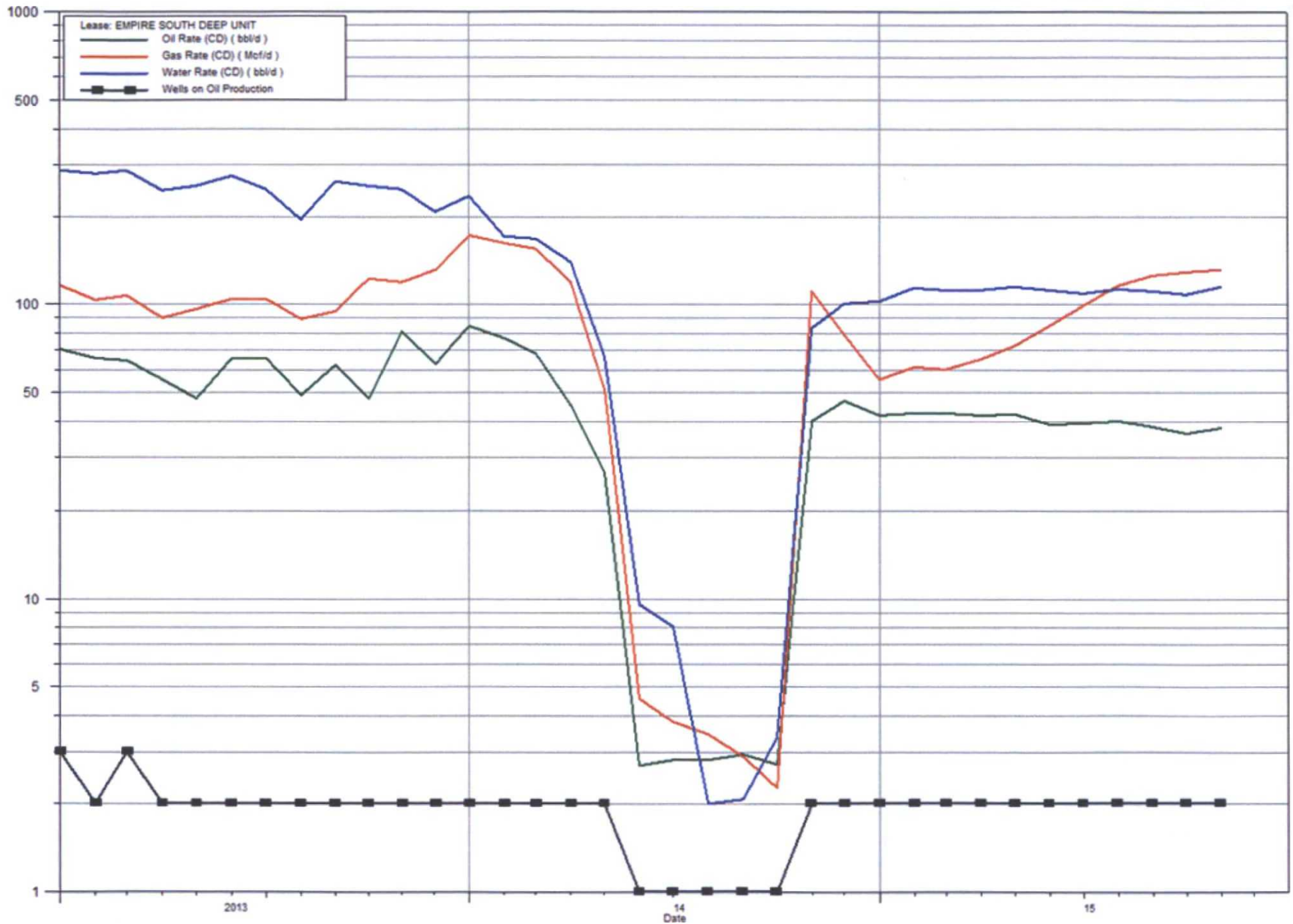
CONFIDENTIAL INFORMATION

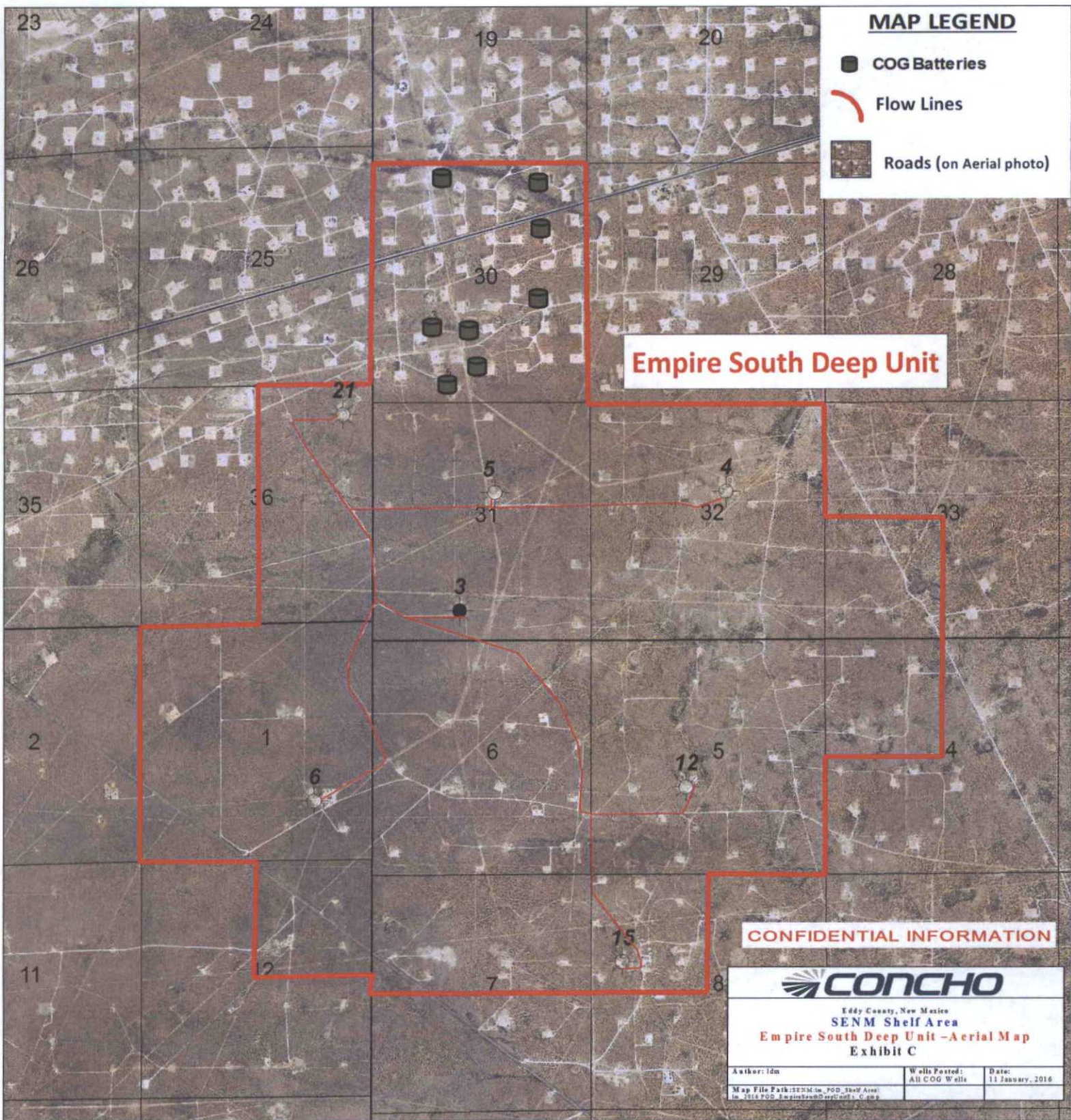
CONCHO
Eddy County, New Mexico
SENM Shelf Area
Empire South Deep Unit Map
Exhibit A-1

Author: L. Marley	Wells Posted: All COG Wells	Date: 11 January, 2016
Map File Path: \\SENM\se_POD_Shelf Area in: \\SENM_POD_EmpireSouthDeepUnit Ex A-1.gxd		

Empire South Deep Unit Exhibit B

CONFIDENTIAL INFORMATION







Aubrey Dunn
COMMISSIONER

State of New Mexico
Commissioner of Public Lands

310 OLD SANTA FE TRAIL
P.O. BOX 1148
SANTA FE, NEW MEXICO 87504-1148

COMMISSIONER'S OFFICE

Phone (505) 827-5760

Fax (505) 827-5766

www.nmstatelands.org

April 28, 2015

Concho Operating LLC
One Concho Center
600 W Illinois Avenue
Midland, Texas 79701

Attn: Mr. Dylan C. Park

Re: 2015 Plans of Development
Empire South Deep Unit
Eddy County, New Mexico

114185
C: 4578

Dear Mr. Park:

The Commissioner of Public Lands has, of this date, approved the referenced Plan of Development. Our approval is subject to like approval by all other appropriate agencies. The possibility of drainage by wells outside the unit area, and the need for further development of the unit may exist; therefore, we may contact you at a later date regarding these possibilities.

If you have any questions, or if we may be of further help, please contact Pete Martinez at (505)-827-5791.

Very truly yours,

A handwritten signature in black ink, appearing to read "Aubrey Dunn", is written over the typed name.

AUBREY DUNN
COMMISSIONER OF PUBLIC LANDS

AD/sk
xc: Reader File
OCD-Daniel Sanchez
BLM- Farmington - Cynthia Marquez



Via Certified Mail
Certificate # 91 7199 9991 7033 2438 1984

RECEIVED OCD
2015 APR 22 P 3:11

April 17, 2015

New Mexico Oil and Gas Conservation Division
Attn: Daniel Martinez
1220 South St. Francis Dr.
Santa Fe, NM 87505

Re: **2015 Plan of Development**
Empire South Deep Unit (NM70946X)
Eddy County, New Mexico

n. 15
c. 8172

Dear Mr. Martinez:

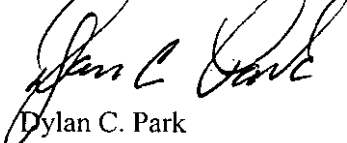
Enclosed please find COG Operating LLC's ("COG") 2015 Plan of Development for the Empire South Deep Unit.

The enclosed Plan of Development is submitted for your review and approval.

If you have any questions, please do not hesitate to contact me by phone at 432-685-2539 or by email at dpark@concho.com.

Respectfully,

COG OPERATING LLC


Dylan C. Park
Sr. Landman

Enclosures:

Summary of Operations
Exhibit A All COG Operated Wells as of the date of this letter
Exhibit A-1 Map of the Unit with Existing wells
Exhibit B Unit Production Plot
Exhibit C Facilities Map

CC:

Bureau of Land Management
Carlsbad Field Office
620 E. Greene St.
Carlsbad, NM 88220
Attn: Mr. Edward Fernandez

State of New Mexico
Commissioner of Public Lands
Attn: Terry Warnell, Director
310 Old Santa Fe Trail
Santa Fe, NM 87504-1148

**EMPIRE SOUTH DEEP UNIT
T17S,R28E-R29E & T18S,R28-29E
EDDY COUNTY, NM**

2015 PLAN OF DEVELOPMENT, COG OPERATING LLC ("COG")

Summary of Operations

Refer to Exhibit A-1, Plat of Empire South Deep Unit, for description of the Empire South Deep Unit Boundary, the status of existing Wolfcamp, Morrow and Atoka wells as of 4/14/2015.

1. COG OPERATED WELLS (COMPLETIONS):

All COG operated wells (completions) as of 4/14/2015 are itemized in Exhibit "A" submitted herewith. Accompanying map, Exhibit "A-1".

2. 2014 - 2015 DRILLING ACTIVITY:

In 2014 there were no new wells drilled and we have no plans for drilling wells in 2015.

3. Exhibit "B" is 2013 & 2014 Daily Production Plot of all the wells in the Empire South Deep Unit.

4. 2015 Empire South Deep Unit Facilities: Exhibit "C"

Exhibit "C" shows the existing facilities, roads and flow lines. Upgrades will be made to improve existing infrastructure and facility operations.

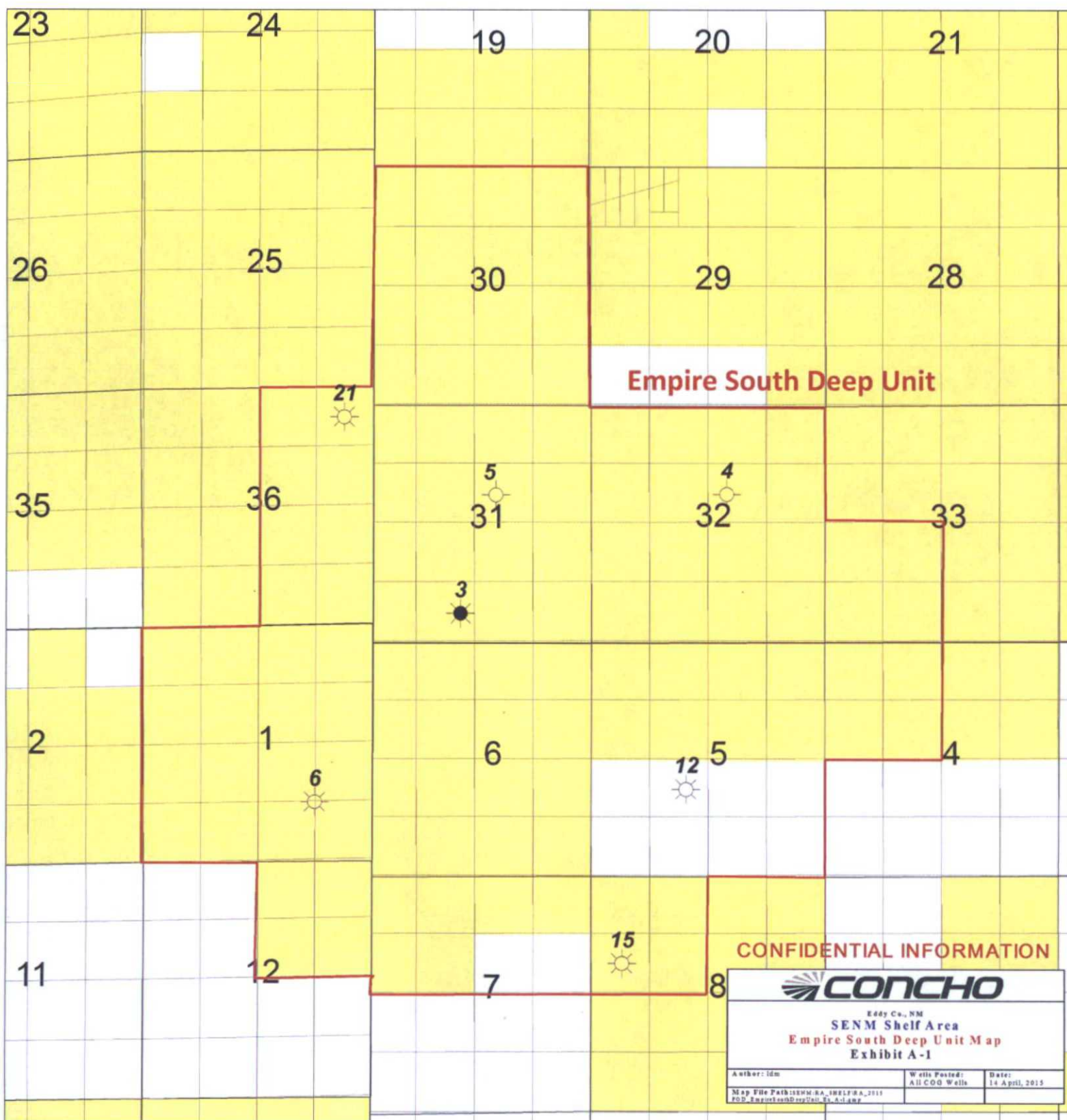


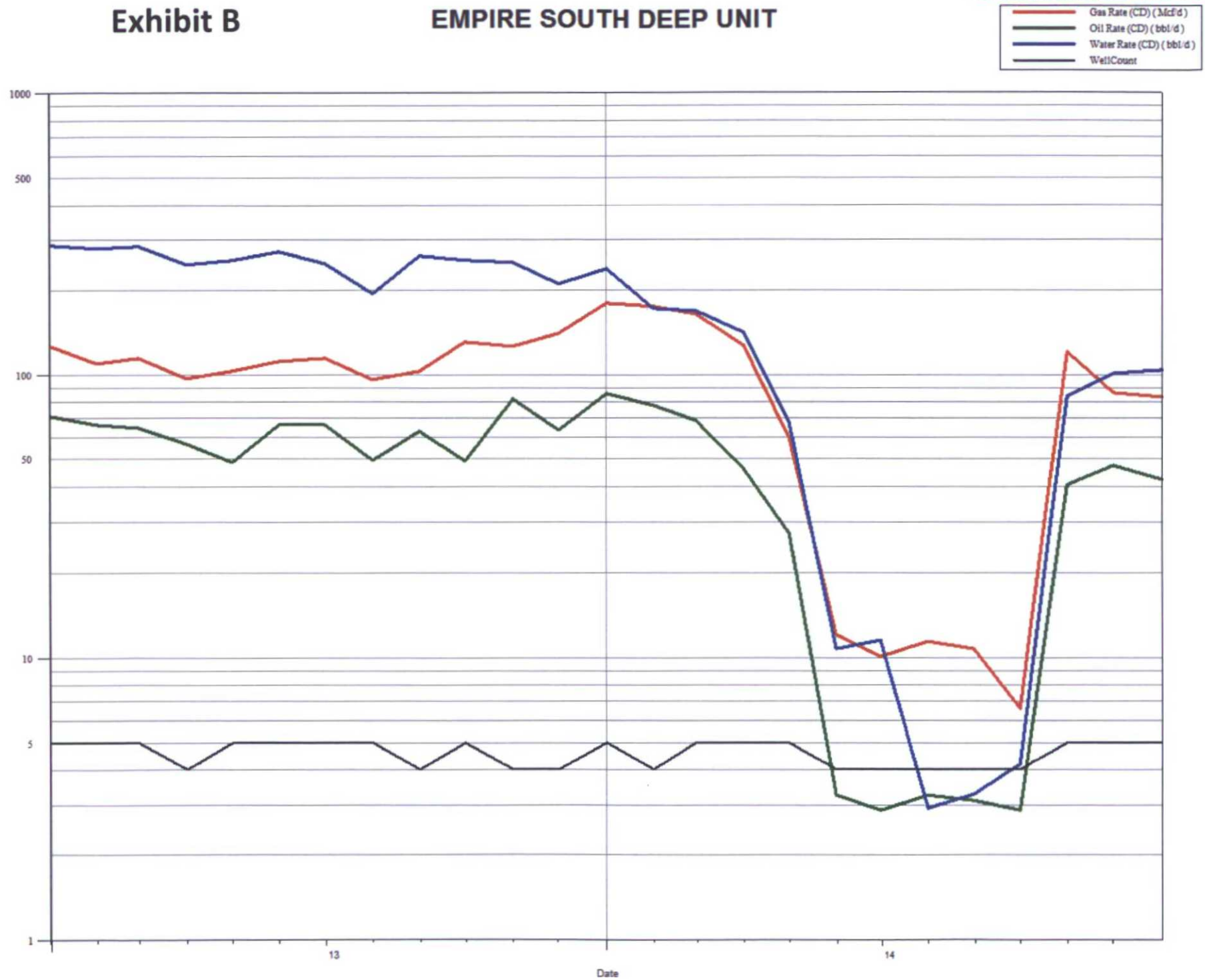
Exhibit A

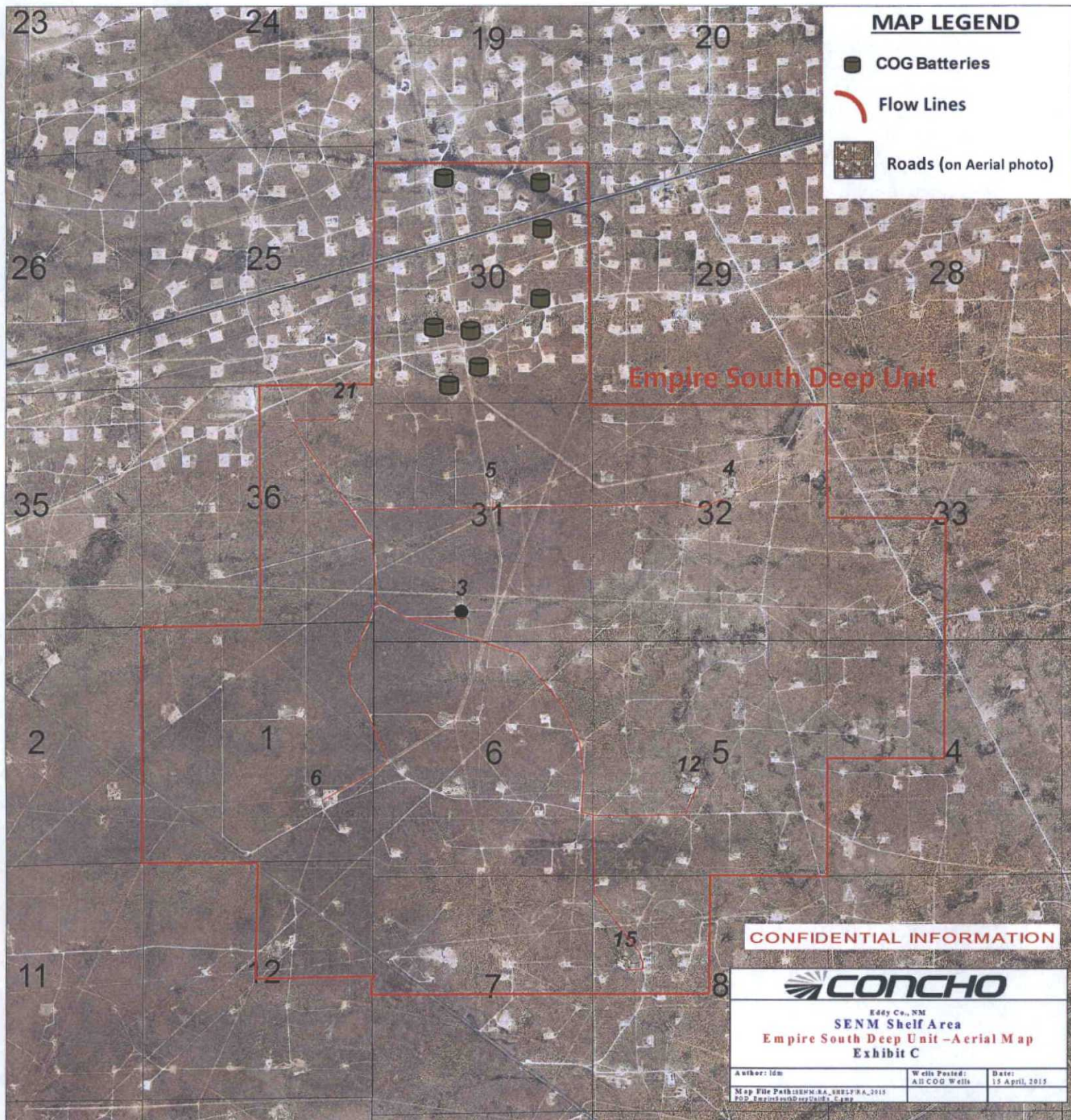
Operator	Well Name	#	API	Field	Producing Zone	TWP	RGE	SEC		Status	First Production
COG	COI SOUTH EMPIRE P UNIT	6	300152156200	BEAR GRASS DRAW	ATOKA	18	28	1	GAS	ACTIVE	12/1/1992
COG	COI SOUTH EMPIRE P UNIT	12	300152194700	BEAR GRASS DRAW	ATOKA	18	29	5	GAS	ACTIVE	10/1/1996
COG	COI SOUTH EMPIRE P UNIT	15	300152223600	EMPIRE SOUTH	WFMP	18	29	8	GAS	ACTIVE	12/1/1992
COG	SOUTH EMPIRE P UNIT	3	300152068500	EMPIRE SOUTH	WFMP/MRRW	17	29	31	OIL&GAS	ACTIVE	8/1/1973
COG	EMPIRE SO DEEP UNIT	12	300152194700	WILDCAT	MRRW/ATOK	18	29	5	GAS	ACTIVE	10/1/1996
COG	EMPIRE SO DEEP UNIT	21	300152347000	EMPIRE SOUTH	MRRW	17	28	36	GAS	ACTIVE	12/1/1992
COG	EMPIRE SO DEEP UNIT	4	300152096400	EMPIRE SOUTH	WFMP	17	29	32	GAS	PLUGGED	12/1/1992
COG	EMPIRE SO DEEP UNIT	5	300152127900	EMPIRE SOUTH	MRRW	17	29	31	GAS	PLUGGED	12/1/1992
	CONFIDENTIAL INFORMATION										

Exhibit B

EMPIRE SOUTH DEEP UNIT

CONFIDENTIAL INFORMATION







Aubrey Dunn
COMMISSIONER

State of New Mexico
Commissioner of Public Lands

310 OLD SANTA FE TRAIL
P.O. BOX 1148
SANTA FE, NEW MEXICO 87504-1148

COMMISSIONER'S OFFICE

Phone (505) 827-5760

Fax (505) 827-5766

www.nmstatelands.org

March 12, 2015

Concho Operating LLC
One Concho Center
600 West Illinois Ave.
Midland, Texas 79701

Attn: Ms. Kanicia Castillo

RE: Empire South Deep Unit
Eddy County, New Mexico

B: 4185
C: 4578

RECEIVED OGD
2015 MAR 17 P 2:56

Dear Ms. Castillo:

Your Unit Agreement may state that Plans of Development are to be filed from "time to time", or whenever a change in the current Plan of Development is necessary. If you're Unit falls under this category please submit a current Plan of Development to this office by April 15, 2015.

In order to help you put together your 2015 Plan of Development, we have included a list of the information to be submitted to this office. We recognize the time involved in putting together the Unit Plans of Development and appreciate your cooperation in this matter.

Plans of Development

Please include the following when submitting current Plans of Development.

- 1.) A summary of the 2014 unit activities including new wells drilled, wells completed, wells shut in, dry holes, and wells converted to injection.
- 2.) If you have not submitted a Plan of Development within the past 12 months, please include a summary of unit activities since you last Plan of Development was approved by the Commissioner of Public Lands.
- 3.) A summary of the anticipated unit activity for 2015 including the wells to be drilled, worked over, shut in or converted to injection wells.
- 4.) A list of the wells in the unit indicating which ones are currently producing, shut in, or are injection wells. Please identify which wells are unit wells and which produce on a lease basis and the formation and pool from which they produce.
- 5.) The monthly production history of each well in the unit for the past two years. This may be a production decline graph or it may be in tabular form.

Concho Operating LLC

March 12, 2015


Page 2

- 6.) Current copies of Exhibits A and B to the Unit Agreement and current maps of existing participating areas.

If you have any questions, please contact Mr. Pete Martinez at (505)-827-5791.

Very truly yours,

AUBREY DUNN
COMMISSIONER OF PUBLIC LANDS

BY: 
TERRY WARNELL, Director
Oil, Gas and Minerals Division

AD/TW/sk
xc: Reader File
OCD-Daniel Martinez
BLM – Attn: Ed Fernandez