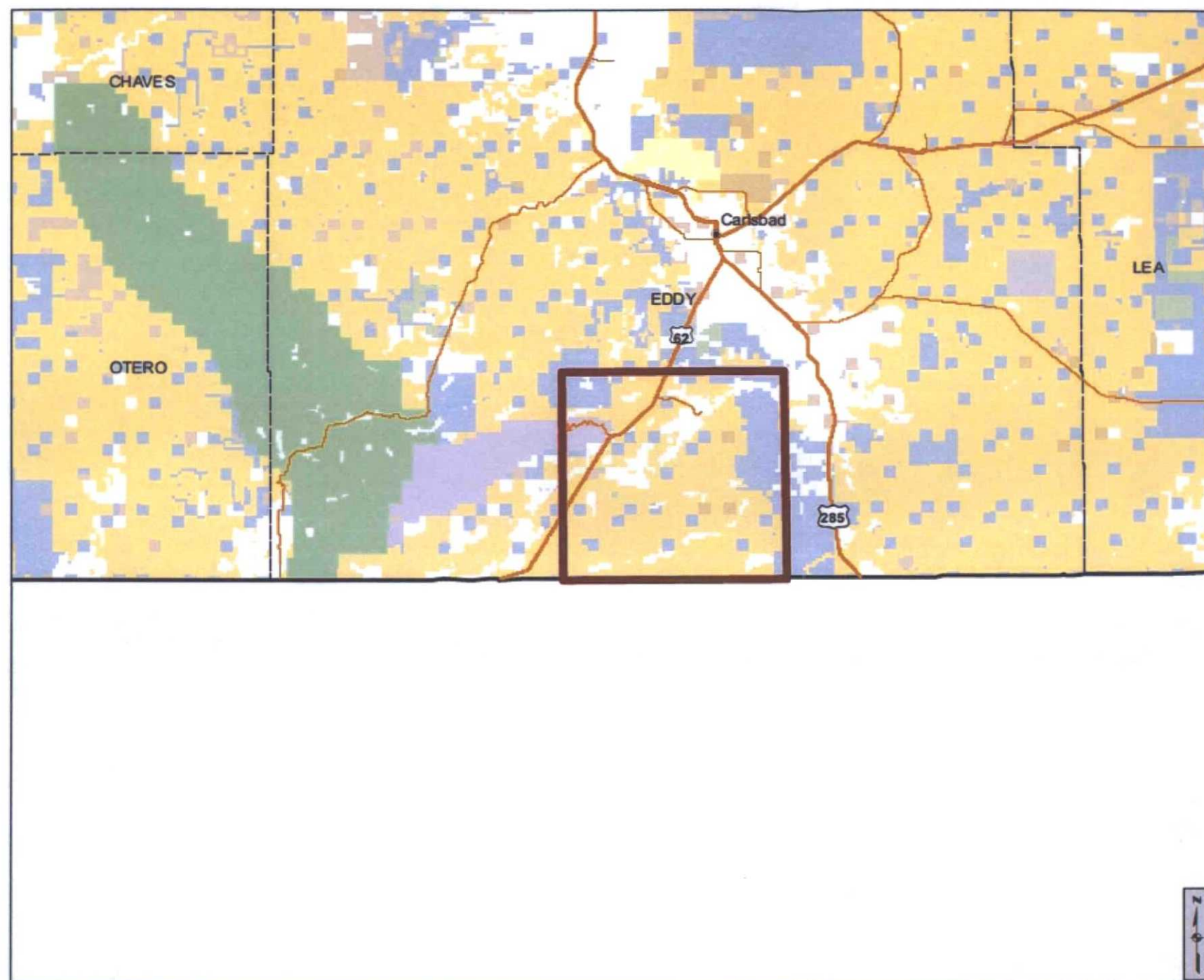


***White City
Wolfcamp Gas Pools
Setback Change Eddy Co., NM***

Case No. 15430

01/07/16





Cartographic Features

- City, Town or Village
- County Seat
- County Boundary
- SLO District Office
- SLO District Boundary
- Land Grant
- Interstate Highway
- US Highway
- NM Highway
- Local Road or Street

Federal Surface Management

- Bureau of Land Management
- Bureau of Reclamation
- Department of Agriculture
- Department of Defense
- Department of Energy
- USDA Forest Service
- Fish and Wildlife Service
- Bureau Indian Affairs
- National Park Service
- Valles Caldera National Preserve

State Trust Lands

- Surface Estate
- Subsurface Estate
- Surface and Subsurface Estate

Lease Types

- Oil and Gas Lease
- Agricultural Lease
- Commercial Lease
- Minerals Lease

New Mexico State Land Office Trust Land Status

0 2.5 5 10 15 20 Miles
Universal Transverse Mercator Projection, Zone 13
1983 North American Datum

The New Mexico State Land Office assumes no responsibility or liability for, or in connection with, the accuracy, reliability or use of the information provided here, in State Land Office data layers or any other data layer.

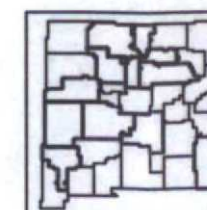
Land Office Geographic Information Center
logic@slo.state.nm.us

Created On: 1/5/2016 2:56:25 PM

Case No. 15430

CIMAREX

Exhibit 1



www.nmstatelands.org