

**STATE OF NEW MEXICO  
DEPARTMENT OF ENERGY, MINERALS AND NATURAL RESOURCES  
OIL CONSERVATION DIVISION**

**IN THE MATTER OF THE APPLICATION  
OF BC OPERATING, INC. FOR  
AUTHORIZATION TO INJECT,  
LEA COUNTY, NEW MEXICO.**

**Case No. 15398**

**BC OPERATING, INC.**

**Exhibits 21 – 27  
Hearing 11/12/15**

WELL: Pearson Possible Re-entry (R.F. Leggett No.1)  
 FIELD: Cherry C SWD  
 CATEGORY: SWD  
 SHL: 1980' FNL and 660' FEL      Sec 33, T-21S, R-33E  
 BHL:  
 COUNTY: Lea      STATE: New Mexico  
 ELEVATION:      API NO.: 30-025-24438

WELLBORE PLAN

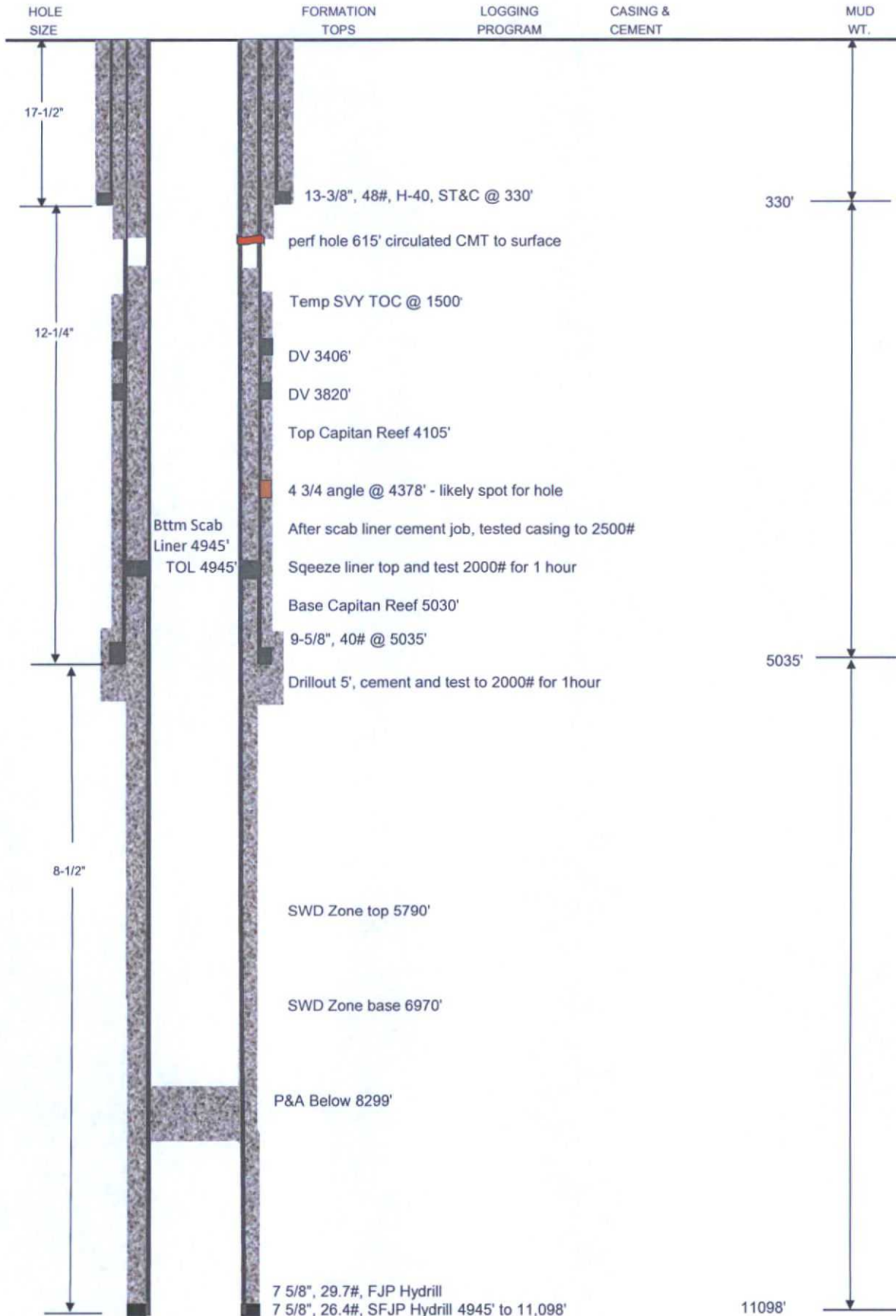


Exhibit 21