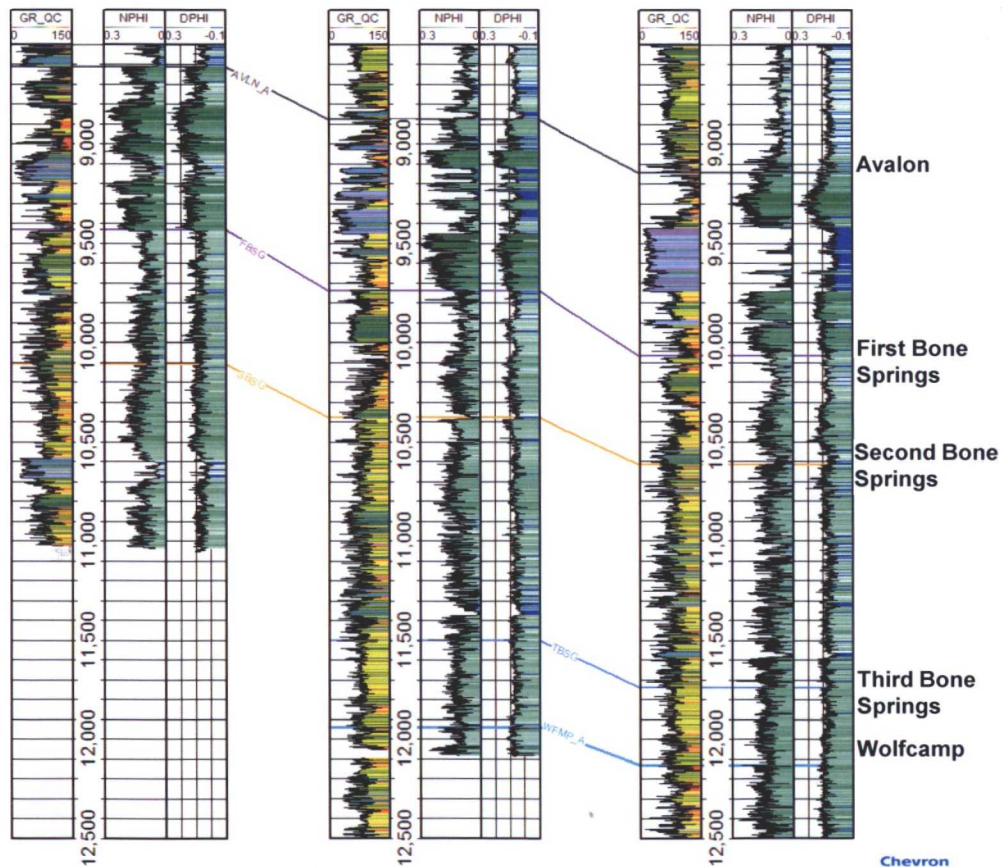


Cross-Section

HALLERTAU '5' FEDEA
30025404360000

SALADO DRAW SWD 13
30025423540000

MADERA MALCOLM R ET
42301302270000



- Stratigraphic continuity seen across the Bone Spring and Wolfcamp Horizons.
- Thicknesses remain relatively constant across sections 14, 15 & 23.



© 2016 Chevron Corporation

