

SON East

R-27-E

DISTRICT I
1600 N. French Dr., Hobbs, NM 58240
Phone (703) 506-8161 Fax: (703) 506-8720

DISTRICT II
811 S. First St., Artesia, NM 88210
Phone (505) 746-1800 Fax: (505) 746-9700

DISTRICT III
1000 Rio Grande Rd., Arco, NM 87410
Phone (505) 524-6170 Fax: (505) 524-6170

DISTRICT IV
1800 S. St. Francis Dr., Santa Fe, NM 87505
Phone (505) 476-3400 Fax: (505) 476-3400

State of New Mexico
Energy, Minerals and Natural Resources Department

OIL CONSERVATION DIVISION
1220 South St. Francis Dr.
Santa Fe, New Mexico 87505

Form C-102
Revised August 1, 2011

Submit one copy to appropriate
District Office

WELL LOCATION AND ACREAGE DEDICATION PLAT

☐ AMENDED REPORT

API Number 30-015-42475	Pool Code 98220	Pool Name Purple Sage Wolfcamp (Gas)
Property Code 313419	Property Name OWL DRAW 22 W1AP Fed Com	Well Number 1H
ORDER No. 14744	Operator Name MEWBOURNE OIL COMPANY	Elevation 3149'

Surface Location

UL or lot No.	Section	Township	Range	Lot Idn	Feet from the	North/South line	Feet from the	East/West line	County
P	15	26 S	27 E		230	SOUTH	660	EAST	EDDY

Bottom Hole Location If Different From Surface

UL or lot No.	Section	Township	Range	Lot Idn	Feet from the	North/South line	Feet from the	East/West line	County
P	22	26S	27E		333	SOUTH	650	EAST	EDDY
Dedicated Acres 320	Joint or Infill	Consolidation Code	Order No.						

NO ALLOWABLE WILL BE ASSIGNED TO THIS COMPLETION UNTIL ALL INTERESTS HAVE BEEN CONSOLIDATED
OR A NON-STANDARD UNIT HAS BEEN APPROVED BY THE DIVISION

SURFACE LOCATION
Lat - N 32°02'07.18"
Long - W 104°10'15.84"
NADSPCE- N 378617.82
E 550281.70
(NAD-27)

OPERATOR CERTIFICATION
I hereby certify that the information contained herein is true and complete to the best of my knowledge and belief, and that this organization either owns a working interest or unleased mineral interest in the land including the proposed bottom hole location or has a right to drill this well at this location pursuant to a contract with an owner of such a mineral or working interest, or to a voluntary pooling agreement or a compulsory pooling order heretofore entered by the division.

Signature: Jackie Lathan Date: 5/10/17
Printed Name: Jackie Lathan
Email Address: _____

SURVEYOR CERTIFICATION
I hereby certify that the well location shown on this plat was plotted from field notes of actual surveys made by me or under my supervision, and that the same is true and correct to the best of my belief.

Date Surveyed: JANUARY 17, 2017
Signature & Seal of Professional Surveyor: [Signature]
W.O. No. 7893
Certificate No. Gary L. Jones 7977
BARIN SURVEYS 27893

1" = 3000'

DISTRICT I

1025 N. French Dr., Hobbs, NM 88240
Phone (505) 335-5181 Fax: (505) 335-0790

DISTRICT II

611 S. First St., Artesia, NM 88210
Phone (505) 745-1888 Fax: (505) 745-0720

DISTRICT III

1000 Rio Brazos Rd., Aztec, NM 87410
Phone (505) 334-9178 Fax: (505) 334-9170

DISTRICT IV

1220 S. St. Francis Dr., Santa Fe, NM 87505
Phone (505) 476-5453 Fax: (505) 476-0465State of New Mexico
Energy, Minerals and Natural Resources Department

Form C-102

Revised August 1, 2011

Submit one copy to appropriate
District Office

OIL CONSERVATION DIVISION

1220 South St. Francis Dr.
Santa Fe, New Mexico 87505

WELL LOCATION AND ACREAGE DEDICATION PLAT

☐ AMENDED REPORT

API Number 30-015-41430	Pool Code 30215	Pool Name Hay Hollow; Bone Spring
Property Code 39940	Property Name OWL DRAW 22 AP FED COM	Well Number 22/27 B2AP 1H
GRID No. 14744	Operator Name MEWBOURNE OIL COMPANY	Elevation 3148

Surface Location

UL or lot No.	Section	Township	Range	Lot Idn	Feet from the	North/South line	Feet from the	East/West line	County
P	15	26 S	27 E		200	SOUTH	600	EAST	EDDY

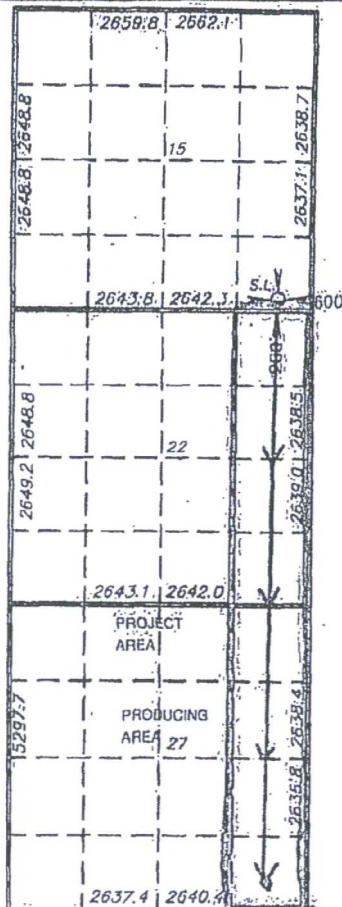
Bottom Hole Location If Different From Surface

UL or lot No.	Section	Township	Range	Lot Idn	Feet from the	North/South line	Feet from the	East/West line	County
P	27	26S	27E		336	SOUTH	572	EAST	EDDY

Dedicated Acres	Joint or Infill	Consolidation Code	Order No.
320			

NO ALLOWABLE WILL BE ASSIGNED TO THIS COMPLETION UNTIL ALL INTERESTS HAVE BEEN CONSOLIDATED
OR A NON-STANDARD UNIT HAS BEEN APPROVED BY THE DIVISION

SURFACE LOCATION
 Lat - N 32°02'06.89"
 Long - W 104°10'15.15"
 NMSPCE - N 378587.48
 E 550341.64
 (NAD-27)



OPERATOR CERTIFICATION

I hereby certify that the information contained herein is true and complete to the best of my knowledge and belief; and that this organization either owns a working interest or unleased mineral interest in the land including the proposed bottom hole location or has a right to drill this well at this location pursuant to a contract with an owner of such a mineral or working interest, or to a voluntary pooling agreement or a compulsory pooling order heretofore entered by the division.

Signature *G. Lathan* 10/27/11
 Date

Printed Name
 Email Address

SURVEYOR CERTIFICATION

I hereby certify that the well location shown on this plat was plotted from field notes of actual surveys made by me or under my supervision and that the same is true and correct to the best of my belief.



Certificate No. Gary L. Jones 7977

BASIN SURVEYS 27993

1" = 3000'

DISTRICT I
1625 N. French Dr., Hobbs, NM 88240
Phone (505) 593-5151 Fax (505) 593-0725

DISTRICT II
511 S. First St., Artesia, NM 88210
Phone (505) 748-1283 Fax (505) 748-0780

DISTRICT III
1000 Rio Brazos Rd., Aztec, NM 87410
Phone (505) 384-4178 Fax (505) 334-9170

DISTRICT IV
1220 S. St. Francis Dr., Santa Fe, NM 87505
Phone (505) 478-8460 Fax (505) 478-8462

State of New Mexico
Energy, Minerals and Natural Resources Department

OIL CONSERVATION DIVISION
1220 South St. Francis Dr.
Santa Fe, New Mexico 87505

ARTESIA DISTRICT
Submit one copy to appropriate District Office

Form C-102
Revised August 1, 2011

APR 03 2017

WELL LOCATION AND ACREAGE DEDICATION PLAT

RECEIVED AMENDED REPORT

API Number 30-015-41448	Pool Code 98220	Pool Name Purple Sagr; Wolfcamp (Gas)
Property Code 39958	Property Name OWL DRAW 23 DM FED COM	Well Number 1H
OGRID No. 14744	Operator Name MEWBOURNE OIL COMPANY	Elevation 3152

Surface Location

UL or lot No.	Section	Township	Range	Lot Idn	Feet from the	North/South line	Feet from the	East/West line	County
M	14	26 S	27 E		375	SOUTH	990	WEST	EDDY

Bottom Hole Location If Different From Surface

UL or lot No.	Section	Township	Range	Lot Idn	Feet from the	North/South line	Feet from the	East/West line	County
M	23	26 S	27 E		344	South	625	West	Eddy
Dedicated Acres 320	Joint or Infill	Consolidation Code	Order No.						

NO ALLOWABLE WILL BE ASSIGNED TO THIS COMPLETION UNTIL ALL INTERESTS HAVE BEEN CONSOLIDATED OR A NON-STANDARD UNIT HAS BEEN APPROVED BY THE DIVISION

SURFACE LOCATION
 Lat - N 32°02'08.72"
 Long - W 104°09'56.68"
 NADSPCE- N 376774.54
 E 551931.04
 (NAD-27)

OPERATOR CERTIFICATION
 I hereby certify that the information contained herein is true and complete to the best of my knowledge and belief, and that this organization either owns a working interest or unleased mineral interest in the land including the proposed bottom hole location or has a right to drill this well at this location pursuant to a contract with an owner of such a mineral or working interest, or to a voluntary pooling agreement or a compulsory pooling order heretofore entered by the division.

Signature: Jackie Lathan Date: 4/4/17
 Printed Name: Jackie Lathan
 Email Address: _____

SURVEYOR CERTIFICATION
 I hereby certify that the well location shown on this plat was plotted from field notes of actual surveys made by me or under my supervision, and that the same is true and correct to the best of my belief.

Date Surveyed: JANUARY 17 2013
 Signature: [Signature]
 Professional Surveyor: [Signature]
 Certificate No. 27951
 Jones 7977
 BASIN SURVEYS 27951

DISTRICT I
1825 N. French Dr., Hobbs, NM 88240
Phone (575) 390-6181 Fax: (575) 383-0720

DISTRICT II
811 S. First St., Artesia, NM 88210
Phone (575) 748-1233 Fax: (575) 748-9720

DISTRICT III
1000 Rio Braxos Rd., Artec, NM 87410
Phone (505) 334-6178 Fax: (505) 334-6179

DISTRICT IV
1220 S. St. Francis Dr., Santa Fe, NM 87505
Phone (505) 476-3460 Fax: (505) 476-3462

State of New Mexico
Energy, Minerals and Natural Resources Department

OIL CONSERVATION DIVISION
1220 South St. Francis
Santa Fe, New Mexico 87505

RECEIVED

MAR 18 2014

Form C-102
Revised August 1, 2011
Submit one copy to appropriate
District Office

WELL LOCATION AND ACREAGE DEDICATION PLAT

AMENDED REPORT

As Drilled

API Number 30-015-41629	Pool Code 30215	Pool Name Hay Hollow Bone Spring
Property Code 39958	Property Name OWL DRAW 23 DM FED COM	Well Number 2H
OGRID No. 14744	Operator Name MEWBOURNE OIL COMPANY	Elevation 3152

Surface Location

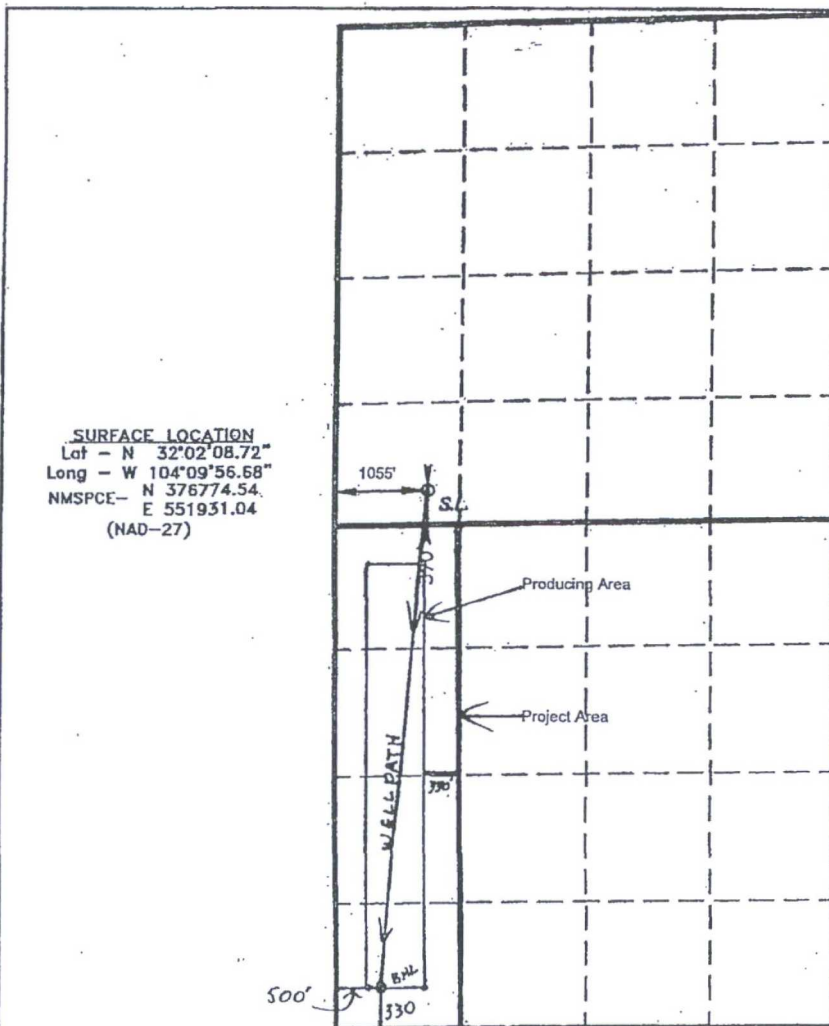
UL or lot No. M	Section 14	Township 26 S	Range 27 E	Lot Idn	Feet from the 370	North/South line SOUTH	Feet from the 1055	East/West line WEST	County EDDY
--------------------	---------------	------------------	---------------	---------	----------------------	---------------------------	-----------------------	------------------------	----------------

Bottom Hole Location If Different From Surface

UL or lot No. M	Section 23	Township 26 S	Range 27 E	Lot Idn	Feet from the 334'	North/South line SOUTH	Feet from the 661'	East/West line WEST	County EDDY
--------------------	---------------	------------------	---------------	---------	-----------------------	---------------------------	-----------------------	------------------------	----------------

Dedicated Acres 160	Joint or Infill	Consolidation Code	Order No.
------------------------	-----------------	--------------------	-----------

NO ALLOWABLE WILL BE ASSIGNED TO THIS COMPLETION UNTIL ALL INTERESTS HAVE BEEN CONSOLIDATED
OR A NON-STANDARD UNIT HAS BEEN APPROVED BY THE DIVISION



OPERATOR CERTIFICATION

I hereby certify that the information contained herein is true and complete to the best of my knowledge and belief, and that this organization either owns a working interest or released mineral interest in the land including the proposed bottom hole location or has a right to drill this well at this location pursuant to a contract with an owner of such a mineral or working interest, or to a voluntary pooling agreement or a compulsory pooling order heretofore entered by the division.

Signature: Bradley Bishop Date: 6-14-13

Printed Name: BRADLEY BISHOP

Email Address: _____

SURVEYOR CERTIFICATION

I hereby certify that the well location shown on this plat was plotted from field notes of actual surveys made by me or under my supervision, and that the same is true and correct to the best of my belief.

Date Surveyed: JANUARY 17 2013
Signature: [Signature]
Professional Surveyor

Certificate No. 7977

Certificate No. 7977

Basin Surveys 27951

District I
1625 N. French Dr., Hobbs, NM 88240
Phone: (575) 393-6161 Fax: (575) 393-0720
District II
811 S. First St., Artesia, NM 88210
Phone: (575) 748-1283 Fax: (575) 748-9720
District III
1000 Rio Brazos Road, Aztec, NM 87410
Phone: (505) 334-6178 Fax: (505) 334-6170
District IV
1220 S. St. Francis Dr., Santa Fe, NM 87505
Phone: (505) 476-3460 Fax: (505) 476-3462

State of New Mexico
Energy, Minerals & Natural Resources Department
OIL CONSERVATION DIVISION
1220 South St. Francis Dr.
Santa Fe, NM 87505

Form C-102
Revised August 1, 2011
Submit one copy to appropriate
District Office

☐ AMENDED REPORT

WELL LOCATION AND ACREAGE DEDICATION PLAT

1 API Number 30-015-42829		2 Pool Code 38216 30215		3 Pool Name HAY HOLLOW BONE SPRING	
4 Property Code 313965		5 Property Name OWL DRAW 22/27 B2BO FED COM			6 Well Number 2H
7 OORID NO. 14744		8 Operator Name MEWBOURNE OIL COMPANY			9 Elevation 3149'
10 Surface Location					
UL or lot no. B	Section 22	Township 26S	Range 27E	Lot Idn 330	Feet from the North/South line NORTH 1585
				East/West line EAST	County EDDY
11 Bottom Hole Location If Different From Surface					
UL or lot no. O	Section 27	Township 26S	Range 27E	Lot Idn 330	Feet from the North/South line SOUTH 1980
				East/West line EAST	County EDDY
12 Dedicated Acres 320		13 Joint or Infill		14 Consolidation Code	
15 Order No.					

No allowable will be assigned to this completion until all interest have been consolidated or a non-standard unit has been approved by the division.

<p>Diagram showing well location and acreage dedication plat. The diagram includes a grid with a well path and a project area. The well path is labeled 'Well Path' and the project area is labeled 'Project Area'. The diagram also shows the well location and acreage dedication plat.</p>	<p>16 GEODETIC DATA NAD 27 GRID - NM EAST SURFACE LOCATION N 378083.37 - E 549359.17 LAT: 32°02'01.72" N LONG: 104°10'28.57" W BOTTOM LOCATION N 386157.26 - E 549038.93</p>	<p>17 OPERATOR CERTIFICATION I hereby certify that the information contained herein is true and complete to the best of my knowledge and belief, and that this organization either owns a working interest or undivided mineral interest in the land including the proposed bottom hole location or has a right to drill this well at this location pursuant to a contract with an owner of such a mineral or working interest, or to a voluntary pooling agreement or a compulsory pooling order heretofore entered by the division.</p> <p>Signature: <u>Bradley Bishop</u> Date: <u>7-18-14</u> Printed Name: <u>BRADLEY BISHOP</u></p> <p>E-mail Address: _____</p>
	<p>18 SURVEYOR CERTIFICATION I hereby certify that the well location shown on this plat was plotted from field notes of actual surveys made by me or under my supervision, and that the same is true and correct to the best of my belief.</p> <p>6/23/2014 Date of Survey Signature and Seal of: <u>Robert M. Howett</u> 19680 Certificate Number</p>	

RRC - Firm No.: TX 1019383B NM 4655451 - Job No.:

District I
1625 N. French Dr., Hobbs, NM 88240
Phone: (575) 393-6161 Fax: (575) 393-0720
District II
811 S. First St., Artesia, NM 88210
Phone: (575) 748-1283 Fax: (575) 748-9720
District III
1000 Rio Brazos Road, Aztec, NM 87410
Phone: (505) 334-6178 Fax: (505) 334-6170
District IV
1220 S. St. Francis Dr., Santa Fe, NM 87505
Phone: (505) 476-3460 Fax: (505) 476-3462

State of New Mexico
Energy, Minerals & Natural Resources Department
OIL CONSERVATION DIVISION
1220 South St. Francis Dr.
Santa Fe, NM 87505

ARTESIA DISTRICT

AUG 21 2015

Form C-102
Revised August 1, 2011
Submit one copy to appropriate
District Office

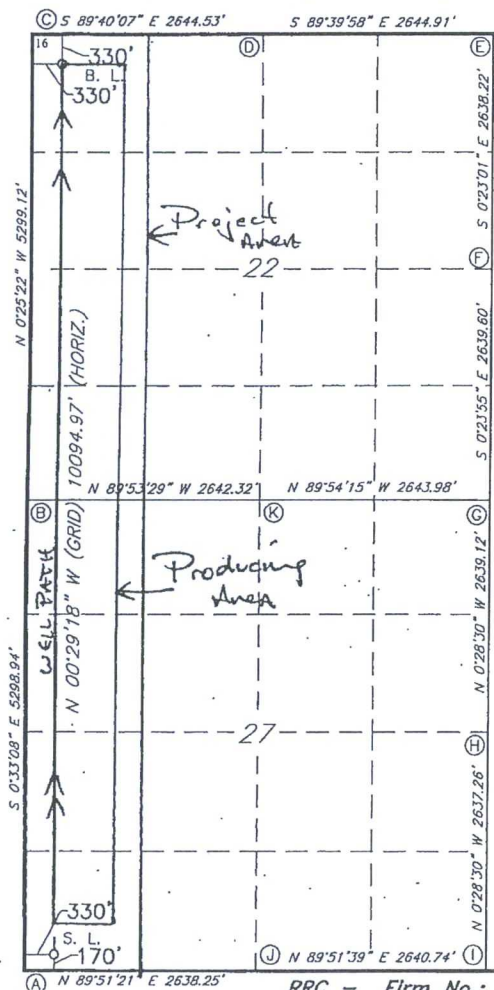
RECEIVED

☐ AMENDED REPORT

WELL LOCATION AND ACREAGE DEDICATION PLAT

1 API Number 30-015-43331		2 Pool Code 30215		3 Pool Name HAY HOLLOW BONE SPRING					
4 Property Code 315208		5 Property Name OWL DRAW 27/22 B2MD FED COM				6 Well Number 1H			
7 GRID NO. 14744		8 Operator Name MEWBOURNE OIL COMPANY				9 Elevation 3175'			
10 Surface Location									
UL or lot no. M	Section 27	Township 26S	Range 27E	Lot Idn	Feet from the 170	North/South line SOUTH	Feet From the 330	East/West line WEST	County EDDY
11 Bottom Hole Location If Different From Surface									
UL or lot no. D	Section 22	Township 26S	Range 27E	Lot Idn	Feet from the 330	North/South line NORTH	Feet from the 330	East/West line WEST	County EDDY
12 Dedicated Acres 320		13 Joint or Infill		14 Consolidation Code		15 Order No.			

No allowable will be assigned to this completion until all interest have been consolidated or a non-standard unit has been approved by the division.



GEODETIC DATA
NAD 27 GRID - NM EAST
SURFACE LOCATION
N: 365989.9 - E: 546071.9
LAT: 32.00613276° N
LONG: 104.18470204° W
BOTTOM LOCATION
N: 376082.3 - E: 545985.9

CORNER DATA
NAD 27 GRID - NM EAST
A: FOUND BRASS CAP "1941"
N: 365819.1 - E: 545743.5
B: FOUND BRASS CAP "1941"
N: 371116.5 - E: 545692.4
C: FOUND BRASS CAP "1941"
N: 376414.2 - E: 545653.4
D: FOUND BRASS CAP "1941"
N: 376398.9 - E: 548297.2
E: FOUND BRASS CAP "1941"
N: 376383.5 - E: 550941.4
F: FOUND BRASS CAP "1941"
N: 373746.0 - E: 550959.1
G: FOUND BRASS CAP "1941"
N: 371107.1 - E: 550977.5
H: FOUND BRASS CAP "1941"
N: 368468.7 - E: 550999.3
I: FOUND BRASS CAP "1941"
N: 365832.2 - E: 551021.2
J: FOUND BRASS CAP "1941"
N: 365825.7 - E: 548381.1
K: FOUND BRASS CAP "1941"
N 371111.5 - E 548334.1

17 OPERATOR CERTIFICATION

I hereby certify that the information contained herein is true and complete to the best of my knowledge and belief, and that this organization either owns a working interest or unleased mineral interest in the land including the proposed bottom hole location or has a right to drill this well at this location pursuant to a contract with an owner of such a mineral or working interest, or to a voluntary pooling agreement or a compulsory pooling order heretofore entered by the division.

Signature: *Bradley Bishop* Date: 1-22-15
Printed Name: BRADLEY BISHOP

E-mail Address

18 SURVEYOR CERTIFICATION

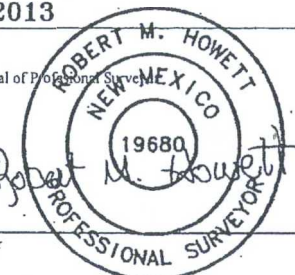
I hereby certify that the well location shown on this plat was plotted from field notes of actual surveys made by me or under my supervision, and that the same is true and correct to the best of my belief.

9/19/2013

Date of Survey

Signature and Seal of Professional Surveyor

19680
Certificate Number



RRC - Firm No.: TX 10193838 NM 4655451 - Job No.: LS130381

District I
1625 N. French Dr., Hobbs, NM 88240
Phone: (575) 393-6161 Fax: (575) 393-0720
District II
811 S. First St., Artesia, NM 88210
Phone: (575) 748-1283 Fax: (575) 748-9720
District III
1000 Rio Brazos Road, Aztec, NM 87410
Phone: (505) 334-6178 Fax: (505) 334-6170
District IV
1220 S. St. Francis Dr., Santa Fe, NM 87505
Phone: (505) 476-3460 Fax: (505) 476-3462

NM OIL CONSERVATION
ARTESIA DISTRICT

State of New Mexico
Energy, Minerals & Natural Resources Department
OIL CONSERVATION DIVISION
1220 South St. Francis Dr.
Santa Fe, NM 87505

OCT 25 2016

Form C-102
Revised August 1, 2011
Submit one copy to appropriate
District Office

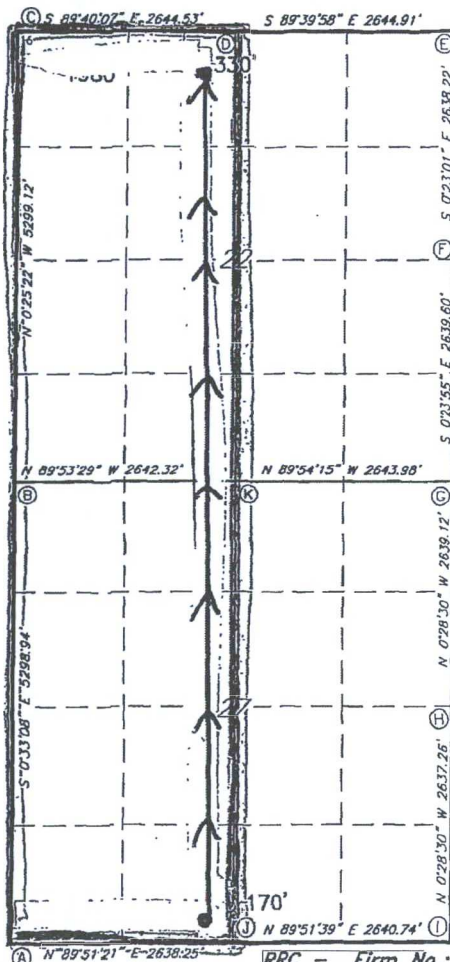
RECEIVED

☒ AMENDED REPORT
Amended Pool & Code
2/1/17

WELL LOCATION AND ACREAGE DEDICATION PLAT

1 API Number 30-015-43624		2 Pool Code 98226 Purple Sage;		3 Pool Name WC-015-52625-28A; Wolfcamp	
4 Property Code 316068		5 Property Name OWL DRAW 27/22 W2MC-FED COM		6 Well Number 1H	
7 GRID NO. 14744		8 Operator Name MEWBOURNE OIL COMPANY		9 Elevation 3178'	
10 Surface Location					
UL or lot no. N	Section 27	Township 26S	Range 27E	Lot Idn 170	Feet from the 2230'
North/South line SOUTH		East/West line WEST		County EDDY	
11 Bottom Hole Location If Different From Surface					
UL or lot no. C	Section 22	Township 26S	Range 27E	Lot Idn 330	Feet from the 2310'
North/South line NORTH		East/West line WEST		County EDDY	
12 Dedicated Acres 640		13 Joint or Infill		14 Consolidation Code R-14262	
15 Order No.					

No allowable will be assigned to this completion until all interest have been consolidated or a non-standard unit has been approved by the division.



GEODETIC DATA
NAD 27 GRID - NM EAST

SURFACE LOCATION
N: 365994.7 - E: 548051.3
LAT: 32.00613826° N
LONG: 104.17831608° W

BOTTOM LOCATION
N: 376072.7 - E: 547632.1

CORNER DATA
NAD 27 GRID - NM EAST

A: FOUND BRASS CAP "1941"
N: 365819.1 - E: 545743.5

B: FOUND BRASS CAP "1941"
N: 371116.5 - E: 545692.4

C: FOUND BRASS CAP "1941"
N: 376414.2 - E: 545653.4

D: FOUND BRASS CAP "1941"
N: 376398.9 - E: 548297.2

E: FOUND BRASS CAP "1941"
N: 376383.5 - E: 550941.4

F: FOUND BRASS CAP "1941"
N: 373746.0 - E: 550959.1

G: FOUND BRASS CAP "1941"
N: 371107.1 - E: 550977.5

H: FOUND BRASS CAP "1941"
N: 368468.7 - E: 550999.3

I: FOUND BRASS CAP "1941"
N: 365832.2 - E: 551021.2

J: FOUND BRASS CAP "1941"
N: 365825.7 - E: 548381.1

K: FOUND BRASS CAP "1941"
N: 371111.5 - E: 548334.1

17 OPERATOR CERTIFICATION

I hereby certify that the information contained herein is true and complete to the best of my knowledge and belief, and that this organization either owns a working interest or unleased mineral interest in the land including the proposed bottom hole location or has a right to drill this well at this location pursuant to a contract with an owner of such a mineral or working interest, or to a voluntary pooling agreement or a compulsory pooling order heretofore entered by the division.

Signature: Jackie Lathan Date: 10/20/16
Printed Name: Jackie Lathan
E-mail Address: _____

18 SURVEYOR CERTIFICATION

I hereby certify that the well location shown on this plat was plotted from field notes of actual surveys made by me or under my supervision, and that the same is true and correct to the best of my belief.

9/19/2013

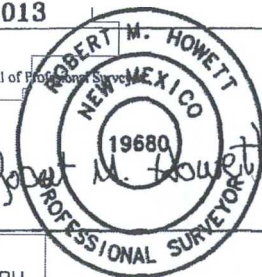
Date of Survey

Signature and Seal of Professional Surveyor

19680

Certificate Number

4/1/2015 BH



RRC - Firm No.: TX 10193838 NM 4655451 - Job No.: LS130383