

SON East

R-27-E



## DISTRICT I

1600 N. French Dr., Hobbs, NM 88240  
Phone (505) 285-5161 Fax: (505) 285-5750

## DISTRICT II

511 S. First St., Artesia, NM 88210  
Phone (505) 745-1800 Fax: (505) 745-5750

## DISTRICT III

1000 Rio Rancho Rd., Artesia, NM 87410  
Phone (505) 284-9170 Fax: (505) 284-5170

## DISTRICT IV

1200 S. St. Francis Dr., Santa Fe, NM 87505  
Phone (505) 476-5550 Fax: (505) 476-5550State of New Mexico  
Energy, Minerals and Natural Resources Department

## OIL CONSERVATION DIVISION

1220 South St. Francis Dr.  
Santa Fe, New Mexico 87505

Form C-102

Revised August 1, 2011

Submit one copy to appropriate  
District Office

## WELL LOCATION AND ACREAGE DEDICATION PLAT

☐ AMENDED REPORT

API Number <b>30-015-42475</b>	Pool Code <b>98220</b>	Pool Name <b>Purple Sage Wolfcamp (Gas)</b>
Property Code <b>313419</b>	Property Name <b>OWL DRAW 22 WIAP Fed Com</b>	Well Number <b>1H</b>
OGED No. <b>14744</b>	Operator Name <b>MEWBOURNE OIL COMPANY</b>	Elevation <b>3149'</b>

## Surface Location

UL or lot No.	Section	Township	Range	Lot Idn	Feet from the	North/South line	Feet from the	East/West line	County
P	15	26 S	27 E		230	SOUTH	660	EAST	EDDY

## Bottom Hole Location If Different From Surface

UL or lot No.	Section	Township	Range	Lot Idn	Feet from the	North/South line	Feet from the	East/West line	County
P	22	26S	27E		333	SOUTH	650	EAST	EDDY

Dedicated Acres <b>320</b>	Joint or Infill	Consolidation Code	Order No.
-------------------------------	-----------------	--------------------	-----------

NO ALLOWABLE WILL BE ASSIGNED TO THIS COMPLETION UNTIL ALL INTERESTS HAVE BEEN CONSOLIDATED  
OR A NON-STANDARD UNIT HAS BEEN APPROVED BY THE DIVISION

SURFACE LOCATION  
Lat - N 32°02'07.18"  
Long - W 104°10'15.84"  
NMSPC- N 378617.82  
E 550281.70  
(NAD-27)

1" = 3000'

## OPERATOR CERTIFICATION

I hereby certify that the information contained herein is true and complete to the best of my knowledge and belief, and that this organization either owns a working interest or unleased mineral interest in the land including the proposed bottom hole location or has a right to drill this well at this location pursuant to a contract with an owner of such a mineral or working interest, or to a voluntary pooling agreement or a compulsory pooling order hereinafter entered by the division.

Signature *Jackie Lathan* Date *5/2/17*Printed Name *Jackie Lathan*

Email Address

## SURVEYOR CERTIFICATION

I hereby certify that the well location shown on this plat was plotted from field notes of actual surveys made by me or under my supervision, and that the same is true and correct to the best of my belief.

Date Surveyed

Signature of Seal of Professional Surveyor

W.D. 88-77893

Certificate No. Gary L. Jones 7977

BARIN SURVEYS 27893

## DISTRICT I

1025 N. French Dr., Hobbs, NM 88240  
Phone (505) 593-0101 Fax: (505) 593-0780

## DISTRICT II

611 S. First St., Artesia, NM 88210  
Phone (505) 745-1888 Fax: (505) 745-0720

## DISTRICT III

1000 Rio Brazos Rd., Aztec, NM 87410  
Phone (505) 854-0178 Fax: (505) 854-0170

## DISTRICT IV

1220 S. St. Francis Dr., Santa Fe, NM 87505  
Phone (505) 476-8480 Fax: (505) 476-0460State of New Mexico  
Energy, Minerals and Natural Resources Department

Form C-102

Revised August 1, 2011

Submit one copy to appropriate  
District Office

## OIL CONSERVATION DIVISION

1220 South St. Francis Dr.  
Santa Fe, New Mexico 87505

## WELL LOCATION AND ACREAGE DEDICATION PLAT

☐ AMENDED REPORT

API Number <b>30-015-41430</b>	Pool Code <b>30215</b>	Pool Name <b>Hay Hollow; Bone Spring</b>
Property Code <b>39940</b>	Property Name <b>OWL DRAW 22 AP FED COM</b>	Well Number <b>22/27 B2AP 1H</b>
OGRID No. <b>14744</b>	Operator Name <b>MEWBOURNE OIL COMPANY</b>	Elevation <b>3148</b>

## Surface Location

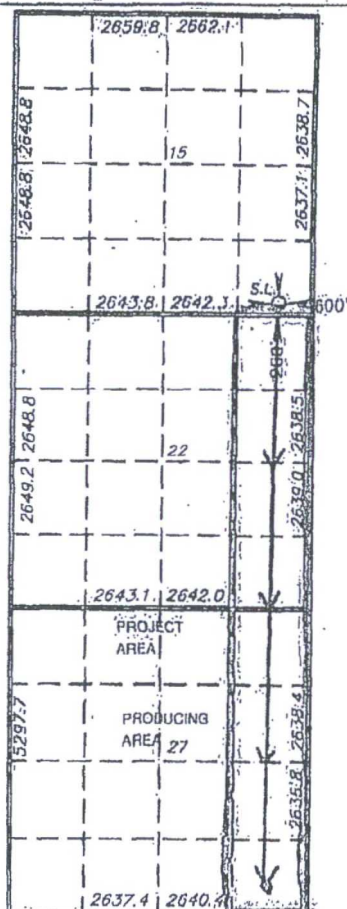
UL or lot No.	Section	Township	Range	Lot Idn	Feet from the	North/South line	Feet from the	East/West line	County
P	15	26 S	27 E		200	SOUTH	600	EAST	EDDY

## Bottom Hole Location If Different From Surface

UL or lot No.	Section	Township	Range	Lot Idn	Feet from the	North/South line	Feet from the	East/West line	County
P	27	26S	27E		336	SOUTH	572	EAST	EDDY
Dedicated Acres <b>320</b>	Joint or Infill	Consolidation Code	Order No.						

NO ALLOWABLE WILL BE ASSIGNED TO THIS COMPLETION UNTIL ALL INTERESTS HAVE BEEN CONSOLIDATED  
OR A NON-STANDARD UNIT HAS BEEN APPROVED BY THE DIVISION

**SURFACE LOCATION**  
 Lat - N 32°02'06.89"  
 Long - W 104°10'15.15"  
 NMSPCE - N 378587.48  
 E 550341.64  
 (NAD-27)



## OPERATOR CERTIFICATION

I hereby certify that the information contained herein is true and complete to the best of my knowledge and belief, and that this organization either owns a working interest or unleased mineral interest in the land including the proposed bottom hole location or has a right to drill this well at this location pursuant to a contract with an owner of such a mineral or working interest, or to a voluntary pooling agreement or a compulsory pooling order heretofore entered by this division.

Signature: J. Lathan Date: 10/27/14

Printed Name: J. Lathan

Email Address: \_\_\_\_\_

## SURVEYOR CERTIFICATION

I hereby certify that the well location shown on this plat was plotted from field notes of actual surveys made by me or under my supervision and that the same is true and correct to the best of my belief.

Date Surveyed: JANUARY 17, 2015  
 Signature & Seal of Professional Surveyor: GARY L. JONES  
 W.S. # 22693

Certificate No. Gary L. Jones 7977

BASIN SURVEYS 27993



DISTRICT I  
1625 N. French Dr., Hobbs, NM 88240  
Phone (575) 888-8181 Fax: (575) 888-0780

DISTRICT II  
511 S. First St., Artesia, NM 88210  
Phone (575) 748-1283 Fax: (575) 748-0780

DISTRICT III  
1000 Rio Brazos Rd., Aztec, NM 87410  
Phone (505) 334-6178 Fax: (505) 334-8170

DISTRICT IV  
1220 S. St. Francis Dr., Santa Fe, NM 87505  
Phone (505) 478-3400 Fax: (505) 478-3455

State of New Mexico  
Energy, Minerals and Natural Resources Department

# OIL CONSERVATION DIVISION

1220 South St. Francis Dr.  
Santa Fe, New Mexico 87505

AM OIL CONSERVATION  
ARTESIA DISTRICT

APR 03 2017

Form C-102

Revised August 1, 2011

Submit one copy to appropriate  
District Office

## WELL LOCATION AND ACREAGE DEDICATION PLAT

RECEIVED AMENDED REPORT

API Number <b>30-015-41448</b>	Pool Code <b>98220</b>	Pool Name <b>Purple Sage; Wolfcamp (Gas)</b>
Property Code <b>39958</b>	Property Name <b>OWL DRAW 23 DM FED COM</b>	Well Number <b>1H</b>
OGRID No. <b>14744</b>	Operator Name <b>MEWBOURNE OIL COMPANY</b>	Elevation <b>3152</b>

### Surface Location

UL or lot No.	Section	Township	Range	Lot Idn	Feet from the	North/South line	Feet from the	East/West line	County
<b>M</b>	<b>14</b>	<b>26 S</b>	<b>27 E</b>		<b>375</b>	<b>SOUTH</b>	<b>990</b>	<b>WEST</b>	<b>EDDY</b>

### Bottom Hole Location If Different From Surface

UL or lot No.	Section	Township	Range	Lot Idn	Feet from the	North/South line	Feet from the	East/West line	County
<b>M</b>	<b>23</b>	<b>26 S</b>	<b>27 E</b>		<b>344</b>	<b>South</b>	<b>625</b>	<b>West</b>	<b>Eddy</b>
Dedicated Acres <b>320</b>	Joint or Infill	Consolidation Code	Order No.						

NO ALLOWABLE WILL BE ASSIGNED TO THIS COMPLETION UNTIL ALL INTERESTS HAVE BEEN CONSOLIDATED  
OR A NON-STANDARD UNIT HAS BEEN APPROVED BY THE DIVISION

**SURFACE LOCATION**  
Lat - N 32°02'08.72"  
Long - W 104°09'56.68"  
NMSPC - N 376774.54  
E 551931.04  
(NAD-27)

2652.2 2651.8  
2638.7 2658.7  
2637.1 2659.8  
2638.5 2658.8  
2639.0 2657.9  
2648.6 2647.9

990'

2656.4 2656.9

**OPERATOR CERTIFICATION**  
I hereby certify that the information contained herein is true and complete to the best of my knowledge and belief, and that this organization either owns a working interest or unleased mineral interest in the land including the proposed bottom hole location or has a right to drill this well at this location pursuant to a contract with an owner of such a mineral or working interest, or to a voluntary pooling agreement or a compulsory pooling order heretofore entered by the division.

Signature **Jackie Lathan** Date **4/4/17**  
Printed Name **Jackie Lathan**  
Email Address

**SURVEYOR CERTIFICATION**  
I hereby certify that the well location shown on this plat was plotted from field notes of actual surveys made by me or under my supervision, and that the same is true and correct to the best of my belief.

**JANUARY 5 2013**  
Date Surveyed  
Signature **[Signature]**  
Professional Surveyor  
Certificate No. **27951**  
Certificate **[Signature]** Jones 7977  
BASIN SURVEYS 27951

DISTRICT I  
1625 N. French Dr., Hobbs, NM 88240  
Phone (505) 396-6161 Fax: (505) 393-0720

DISTRICT II  
811 S. First St., Artesia, NM 88210  
Phone (505) 744-1233 Fax: (505) 748-0720

DISTRICT III  
1000 Rio Bravos Rd., Artec, NM 87410  
Phone (505) 334-6178 Fax: (505) 334-6179

DISTRICT IV  
1220 S. St. Francis Dr., Santa Fe, NM 87505  
Phone (505) 476-3480 Fax: (505) 476-3482

State of New Mexico  
Energy, Minerals and Natural Resources Department

OIL CONSERVATION DIVISION  
1220 South St. Francis  
Santa Fe, New Mexico 87505



Form C-102  
Revised August 1, 2011  
Submit one copy to appropriate  
District Office

WELL LOCATION AND ACREAGE DEDICATION PLAT

AMENDED REPORT

*As Drilled*

API Number <b>30-015-41629</b>		Pool Code <b>30215</b>	Pool Name <b>Hay Hollow Bone Spring</b>
Property Code <b>39958</b>	Property Name <b>OWL DRAW 23 DM FED COM</b>		Well Number <b>2 H</b>
GRID No. <b>14744</b>	Operator Name <b>MEWBOURNE OIL COMPANY</b>		Elevation <b>3152</b>

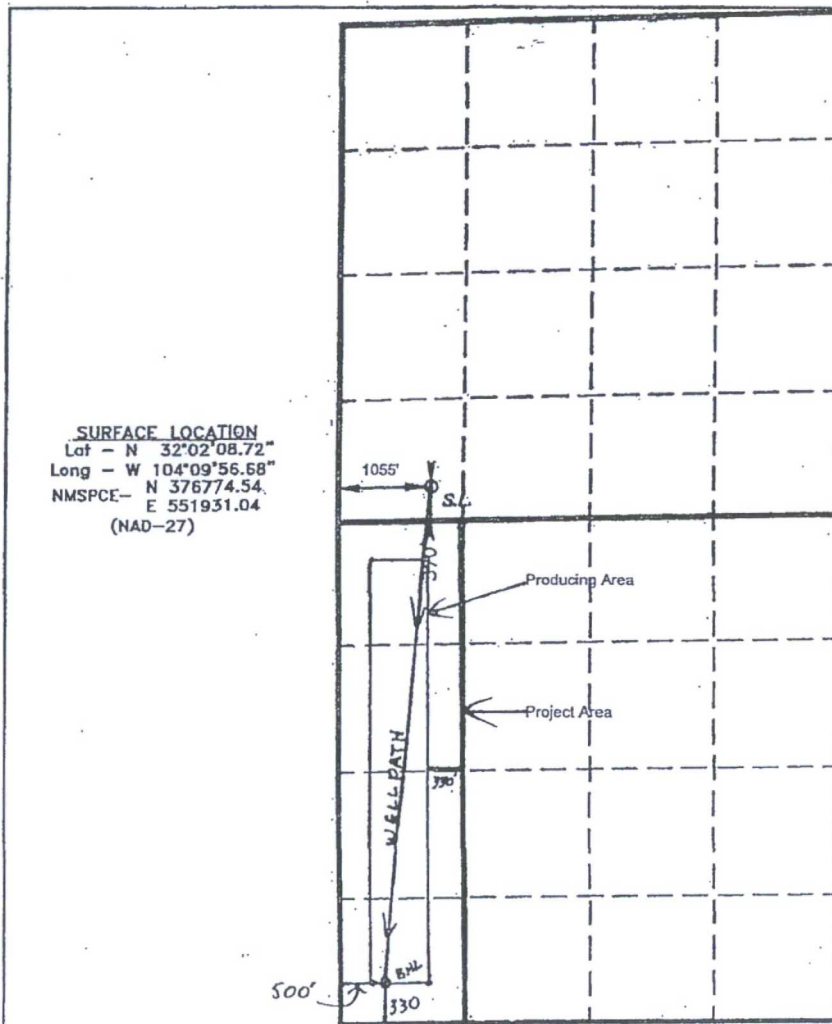
Surface Location

UL or lot No.	Section	Township	Range	Lot Idn	Feet from the	North/South line	Feet from the	East/West line	County
M	14	26 S	27 E		370	SOUTH	1055	WEST	EDDY

Bottom Hole Location If Different From Surface

UL or lot No.	Section	Township	Range	Lot Idn	Feet from the	North/South line	Feet from the	East/West line	County
M	23	26 S	27 E		334'	SOUTH	661'	WEST	EDDY
Dedicated Acres	Joint or Infill	Consolidation Code	Order No.						
160									

NO ALLOWABLE WILL BE ASSIGNED TO THIS COMPLETION UNTIL ALL INTERESTS HAVE BEEN CONSOLIDATED  
OR A NON-STANDARD UNIT HAS BEEN APPROVED BY THE DIVISION



OPERATOR CERTIFICATION

I hereby certify that the information contained herein is true and complete to the best of my knowledge and belief, and that this organization either owns a working interest or unleased mineral interest in the land including the proposed bottom hole location or has a right to drill this well at this location pursuant to a contract with an owner of such a mineral or working interest, or to a voluntary pooling agreement or a compulsory pooling order heretofore entered by the division.

*Bradley Bishop* 6-14-13  
Signature Date

**BRADLEY BISHOP**  
Printed Name

Email Address

SURVEYOR CERTIFICATION

I hereby certify that the well location shown on this plat was plotted from field notes of actual surveys made by me or under my supervision, and that the same is true and correct to the best of my belief.

JANUARY 12 2013  
Date Surveyed

Signature  
Professional Surveyor

No. 27951

Certificate No. Jones 7977

BASIN SURVEYS 27951



District I  
1625 N. French Dr., Hobbs, NM 88240  
Phone: (575) 393-6161 Fax: (575) 393-0720  
District II  
811 B. First St., Azusa, NM 88210  
Phone: (575) 748-1283 Fax: (575) 748-9720  
District III  
1000 Rio Brazos Road, Azusa, NM 87410  
Phone: (505) 334-6178 Fax: (505) 334-6170  
District IV  
1220 S. St. Francis Dr., Santa Fe, NM 87505  
Phone: (505) 476-3460 Fax: (505) 476-3462

State of New Mexico  
Energy, Minerals & Natural Resources Department  
OIL CONSERVATION DIVISION  
1220 South St. Francis Dr.  
Santa Fe, NM 87505

Form C-102  
Revised August 1, 2011  
Submit one copy to appropriate  
District Office

☐ AMENDED REPORT

WELL LOCATION AND ACREAGE DEDICATION PLAT

1 API Number 30-015-42829		2 Pool Code 38216 30215		3 Pool Name HAY HOLLOW BONE SPRING	
4 Property Code 313965		5 Property Name OWL DRAW 22/27 B2BO FED COM			6 Well Number 2H
7 GRID NO. 14744		8 Operator Name MEWBOURNE OIL COMPANY			9 Elevation 3149'
10 Surface Location					
UL or lot no. B	Section 22	Township 26S	Range 27E	Lot Idn 330	Feet from the North/South line NORTH 1585
		East/West line EAST	County EDDY		
11 Bottom Hole Location If Different From Surface					
UL or lot no. O	Section 27	Township 26S	Range 27E	Lot Idn 330	Feet from the North/South line SOUTH 1980
		East/West line EAST	County EDDY		
12 Dedicated Acres 320		13 Joint or Infill		14 Consolidation Code	
15 Order No.					

No allowable will be assigned to this completion until all interest have been consolidated or a non-standard unit has been approved by the division.

	<p>16</p> <p>330' S. L. 1585'</p> <p>22</p> <p>27</p> <p>26S</p> <p>27S</p> <p>27E</p> <p>28E</p> <p>330'</p> <p>1980'</p> <p>Project Area</p> <p>Producing Area</p>	<p>17</p> <p>GEODETIC DATA NAD 27 GRID - NM EAST</p> <p>SURFACE LOCATION N 378083.37 - E 549359.17</p> <p>LAT: 32°02'01.72" N LONG: 104°10'28.57" W</p> <p>BOTTOM LOCATION N 366157.26 - E 549038.93</p>	<p>18 OPERATOR CERTIFICATION</p> <p>I hereby certify that the information contained herein is true and complete to the best of my knowledge and belief, and that this organization either owns a working interest or undivided interest in the land including the proposed bottom hole location or has a right to drill this well at this location pursuant to a contract with an owner of such a mineral or working interest, or to a voluntary pooling agreement or a compulsory pooling order heretofore entered by the division.</p> <p>Signature: <u>Bradley Bishop</u> Date: <u>7-18-14</u></p> <p>Printed Name: <u>BRADLEY BISHOP</u></p> <p>E-mail Address: _____</p>
	<p>19</p> <p>SURVEYOR CERTIFICATION</p> <p>I hereby certify that the well location shown on this plat was plotted from field notes of actual surveys made by me or under my supervision, and that the same is true and correct to the best of my belief.</p> <p>6/23/2014 Date of Survey</p> <p>Signature and Seal of <u>Robert M. Howett</u></p> <p>19680 Certificate Number</p>		

RRC - Firm No.: TX 10193838 NM 4655451 - Job No.:

District I  
1625 N. French Dr., Hobbs, NM 88240  
Phone: (575) 393-6161 Fax: (575) 393-0720  
District II  
811 S. First St., Artesia, NM 88210  
Phone: (575) 748-1283 Fax: (575) 748-9720  
District III  
1000 Rio Brazos Road, Aztec, NM 87410  
Phone: (505) 334-6178 Fax: (505) 334-6170  
District IV  
1220 S. St. Francis Dr., Santa Fe, NM 87505  
Phone: (505) 476-3460 Fax: (505) 476-3462

**NM OIL CONSERVATION**  
State of New Mexico  
Energy, Minerals & Natural Resources Department  
**OIL CONSERVATION DIVISION**  
1220 South St. Francis Dr.  
Santa Fe, NM 87505

ARTESIA DISTRICT

Form C-102

Revised August 1, 2011

Submit one copy to appropriate  
District Office

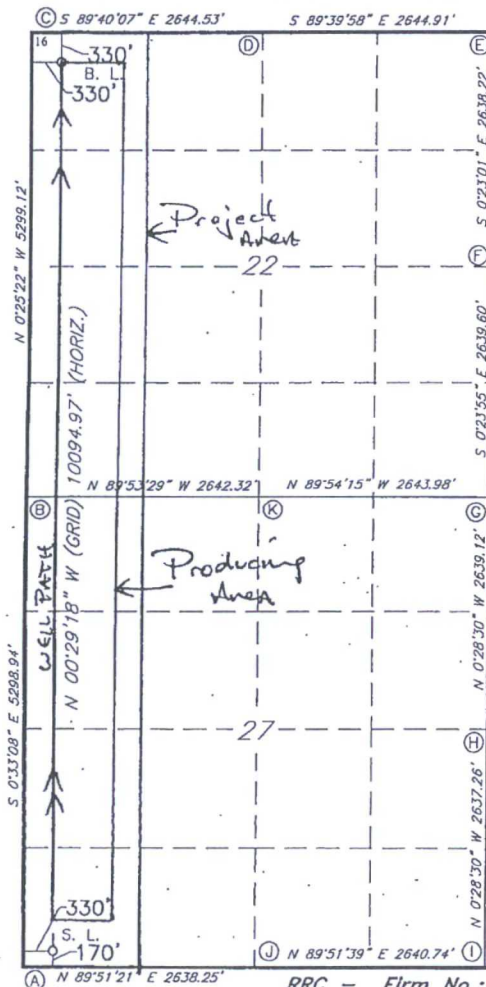
RECEIVED

☐ AMENDED REPORT

**WELL LOCATION AND ACREAGE DEDICATION PLAT**

<b>1 API Number</b> 30-015-43331		<b>2 Pool Code</b> 30215		<b>3 Pool Name</b> Hay Hollow Bone Spring					
<b>4 Property Code</b> 315208		<b>5 Property Name</b> OWL DRAW 27/22 B2MD FED COM			<b>6 Well Number</b> 1H				
<b>7 GRID NO.</b> 14744		<b>8 Operator Name</b> MEWBOURNE OIL COMPANY			<b>9 Elevation</b> 3175'				
<b>10 Surface Location</b>									
UL or lot no. <b>M</b>	Section <b>27</b>	Township <b>26S</b>	Range <b>27E</b>	Lot Idn	Feet from the <b>170</b>	North/South line <b>SOUTH</b>	Feet from the <b>330</b>	East/West line <b>WEST</b>	County <b>EDDY</b>
<b>11 Bottom Hole Location If Different From Surface</b>									
UL or lot no. <b>D</b>	Section <b>22</b>	Township <b>26S</b>	Range <b>27E</b>	Lot Idn	Feet from the <b>330</b>	North/South line <b>NORTH</b>	Feet from the <b>330</b>	East/West line <b>WEST</b>	County <b>EDDY</b>
<b>12 Dedicated Acres</b> 320		<b>13 Joint or Infill</b>		<b>14 Consolidation Code</b>		<b>15 Order No.</b>			

No allowable will be assigned to this completion until all interest have been consolidated or a non-standard unit has been approved by the division.



**GEODETTIC DATA**  
NAD 27 GRID - NM EAST  
SURFACE LOCATION  
N: 365989.9 - E: 546071.9  
LAT: 32.00613276° N  
LONG: 104.18470204° W  
BOTTOM LOCATION  
N: 376082.3 - E: 545985.9

**CORNER DATA**  
NAD 27 GRID - NM EAST  
A: FOUND BRASS CAP "1941"  
N: 365819.1 - E: 545743.5  
B: FOUND BRASS CAP "1941"  
N: 371116.5 - E: 545692.4  
C: FOUND BRASS CAP "1941"  
N: 376414.2 - E: 545653.4  
D: FOUND BRASS CAP "1941"  
N: 376398.9 - E: 548297.2  
E: FOUND BRASS CAP "1941"  
N: 376383.5 - E: 550941.4  
F: FOUND BRASS CAP "1941"  
N: 373746.0 - E: 550959.1  
G: FOUND BRASS CAP "1941"  
N: 371107.1 - E: 550977.5  
H: FOUND BRASS CAP "1941"  
N: 368468.7 - E: 550999.3  
I: FOUND BRASS CAP "1941"  
N: 365832.2 - E: 551021.2  
J: FOUND BRASS CAP "1941"  
N: 365825.7 - E: 548381.1  
K: FOUND BRASS CAP "1941"  
N: 371111.5 - E: 548334.1

**17 OPERATOR CERTIFICATION**

I hereby certify that the information contained herein is true and complete to the best of my knowledge and belief, and that this organization either owns a working interest or unleased mineral interest in the land including the proposed bottom hole location or has a right to drill this well at this location pursuant to a contract with an owner of such a mineral or working interest, or to a voluntary pooling agreement or a compulsory pooling order heretofore entered by the division.

Signature: *Bradley Bishop* Date: 1-22-15  
Printed Name: BRADLEY BISHOP

E-mail Address

**18 SURVEYOR CERTIFICATION**

I hereby certify that the well location shown on this plat was plotted from field notes of actual surveys made by me or under my supervision, and that the same is true and correct to the best of my belief.

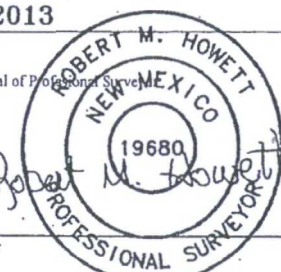
9/19/2013

Date of Survey

Signature and Seal of Professional Surveyor

19680

Certificate Number



RRC - Firm No.: TX 10193838 NM 4655451 - Job No.: LS130381



**NM OIL CONSERVATION**  
ARTESIA DISTRICT

District I  
1625 N. French Dr., Hobbs, NM 88240  
Phone: (575) 393-6161 Fax: (575) 393-0720  
District II  
811 S. First St., Artesia, NM 88210  
Phone: (575) 748-1283 Fax: (575) 748-9720  
District III  
1000 Rio Brazos Road, Aztec, NM 87410  
Phone: (505) 334-6178 Fax: (505) 334-6170  
District IV  
1220 S. St. Francis Dr., Santa Fe, NM 87505  
Phone: (505) 476-3460 Fax: (505) 476-3462

State of New Mexico  
Energy, Minerals & Natural Resources Department  
OIL CONSERVATION DIVISION  
1220 South St. Francis Dr.  
Santa Fe, NM 87505

OCT 25 2016

Form C-102  
Revised August 1, 2011  
Submit one copy to appropriate  
District Office

RECEIVED

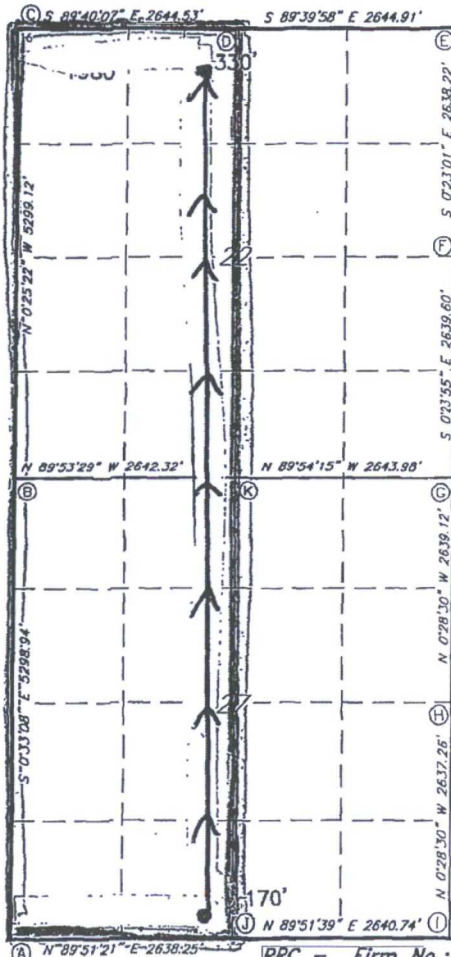
☒ AMENDED REPORT

Amended Pool & Code  
2/1/17

**WELL LOCATION AND ACREAGE DEDICATION PLAT**

1 API Number <b>30-015-43624</b>		2 Pool Code <b>98226 Purple Sage</b>		3 Pool Name <b>WC-015-52129-28A; Wolfcamp</b>	
4 Property Code <b>316068</b>		5 Property Name <b>OWL DRAW 27/22 W2N-FED COM</b>		6 Well Number <b>1H</b>	
7 GRID NO. <b>14744</b>		8 Operator Name <b>MEWBOURNE OIL COMPANY</b>		9 Elevation <b>3178'</b>	
10 Surface Location					
UL or lot no. <b>N</b>	Section <b>27</b>	Township <b>26S</b>	Range <b>27E</b>	Lot Idn <b>170</b>	Feet from the <b>170</b>
		North/South line <b>SOUTH</b>		Feet From the <b>2230'</b>	East/West line <b>WEST</b>
				County <b>EDDY</b>	
11 Bottom Hole Location If Different From Surface					
UL or lot no. <b>C</b>	Section <b>22</b>	Township <b>26S</b>	Range <b>27E</b>	Lot Idn <b>330</b>	Feet from the <b>330</b>
		North/South line <b>NORTH</b>		Feet from the <b>2310</b>	East/West line <b>WEST</b>
				County <b>EDDY</b>	
12 Dedicated Acres <b>4.40</b>	13 Joint or Infill	14 Consolidation Code	15 Order No. <b>R-14262</b>		

No allowable will be assigned to this completion until all interest have been consolidated or a non-standard unit has been approved by the division.



**GEODETIC DATA**  
NAD 27 GRID - NM EAST

**SURFACE LOCATION**  
N: 365994.7 - E: 548051.3  
LAT: 32.00613826° N  
LONG: 104.17831608° W

**BOTTOM LOCATION**  
N: 376072.7 - E: 547632.1

**CORNER DATA**  
NAD 27 GRID - NM EAST

A: FOUND BRASS CAP "1941"  
N: 365819.1 - E: 545743.5  
B: FOUND BRASS CAP "1941"  
N: 371116.5 - E: 545692.4  
C: FOUND BRASS CAP "1941"  
N: 376414.2 - E: 545653.4  
D: FOUND BRASS CAP "1941"  
N: 376398.9 - E: 548297.2  
E: FOUND BRASS CAP "1941"  
N: 376383.5 - E: 550941.4  
F: FOUND BRASS CAP "1941"  
N: 373746.0 - E: 550959.1  
G: FOUND BRASS CAP "1941"  
N: 371107.1 - E: 550977.5  
H: FOUND BRASS CAP "1941"  
N: 368468.7 - E: 550999.3  
I: FOUND BRASS CAP "1941"  
N: 365832.2 - E: 551021.2  
J: FOUND BRASS CAP "1941"  
N: 365825.7 - E: 548381.1  
K: FOUND BRASS CAP "1941"  
N: 371111.5 - E: 548334.1

**17 OPERATOR CERTIFICATION**

I hereby certify that the information contained herein is true and complete to the best of my knowledge and belief, and that this organization either owns a working interest or unleased mineral interest in the land including the proposed bottom hole location or has a right to drill this well at this location pursuant to a contract with an owner of such a mineral or working interest, or to a voluntary pooling agreement or a compulsory pooling order heretofore entered by the division.

Signature: **Jacqui Lathan** Date: **10/20/16**  
Printed Name: **Jacqui Lathan**

E-mail Address

**18 SURVEYOR CERTIFICATION**

I hereby certify that the well location shown on this plat was plotted from field notes of actual surveys made by me or under my supervision, and that the same is true and correct to the best of my belief.

**9/19/2013**

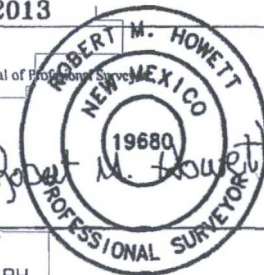
Date of Survey

Signature and Seal of Professional Surveyor

**19680**

Certificate Number

**4/1/2015 BH**



RRC - Firm No.: TX 10193838 NM 4655451 - Job No.: LS130383