



MAR 15 2019 AM 08:53

ENDURING RESOURCES

1050 Seventeenth Street Suite 2500 Denver Colorado 80265
Telephone: 303 573 1222 Facsimile: 303 573 0461

March 1, 2019

Assistant District Manager, Minerals
Attn: Dave Mankiewicz
Bureau of Land Management
Farmington Resource Area
6251 College Blvd, Suite A
Farmington, New Mexico 87402

Commissioner of Public Lands
State of New Mexico
P. O. Box 1148
Santa Fe, New Mexico 87504-1148

Oil Conservation Division
State of New Mexico
1220 South St. Francis Drive
Santa Fe, New Mexico 87505-4000

Re: South Escavada Unit – NMNM 130812A
Sandoval County, New Mexico
2019 Plan of Development

Ladies and Gentlemen:

Pursuant to the South Escavada Unit Agreement, Enduring Resources, LLC, as Unit Operator (“Enduring”), proposes that the following wells be drilled within the South Escavada Unit during 2019:

<u>Well Name</u>	<u>Est.Spud Date</u>
SEU #360H	07/15/19

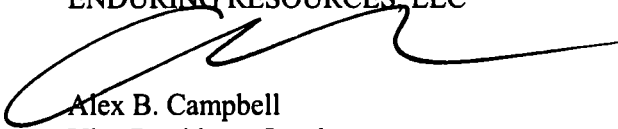
Enduring will drill any offset wells that may be required to prevent drainage of unitized substances.
In 2018 & 2019, Enduring completed the following wells in the South Escavada Unit:

<u>Well Name</u>	<u>Spud Date</u>	<u>1st Delivery Date</u>
SEU#352H	07/30/2018	02/18/2019
SEU #353H	07/31/2018	10/23/2018

The South Escavada Unit is owned 100% by Enduring Resources IV, LLC.

If this Plan of Development is acceptable, please signify your approval, in the space provided on the enclosed execution page and return an approved copy to Enduring.

Sincerely,
ENDURING RESOURCES, LLC



Alex B. Campbell
Vice President - Land

Enclosures:
Exhibit A-Map

South Escavada Unit – NMNM 130812A

2019 Plan of Development

March 1, 2019

APPROVED: _____

Assistant District Manager, Minerals
Bureau of Land Management

DATE: _____

APPROVED: _____

Commissioner of Public Lands

DATE: _____

The foregoing approvals are for the 2019 South Escavada Unit – NMNM 130812A
Sandoval County, New Mexico 2019 Plan of Development

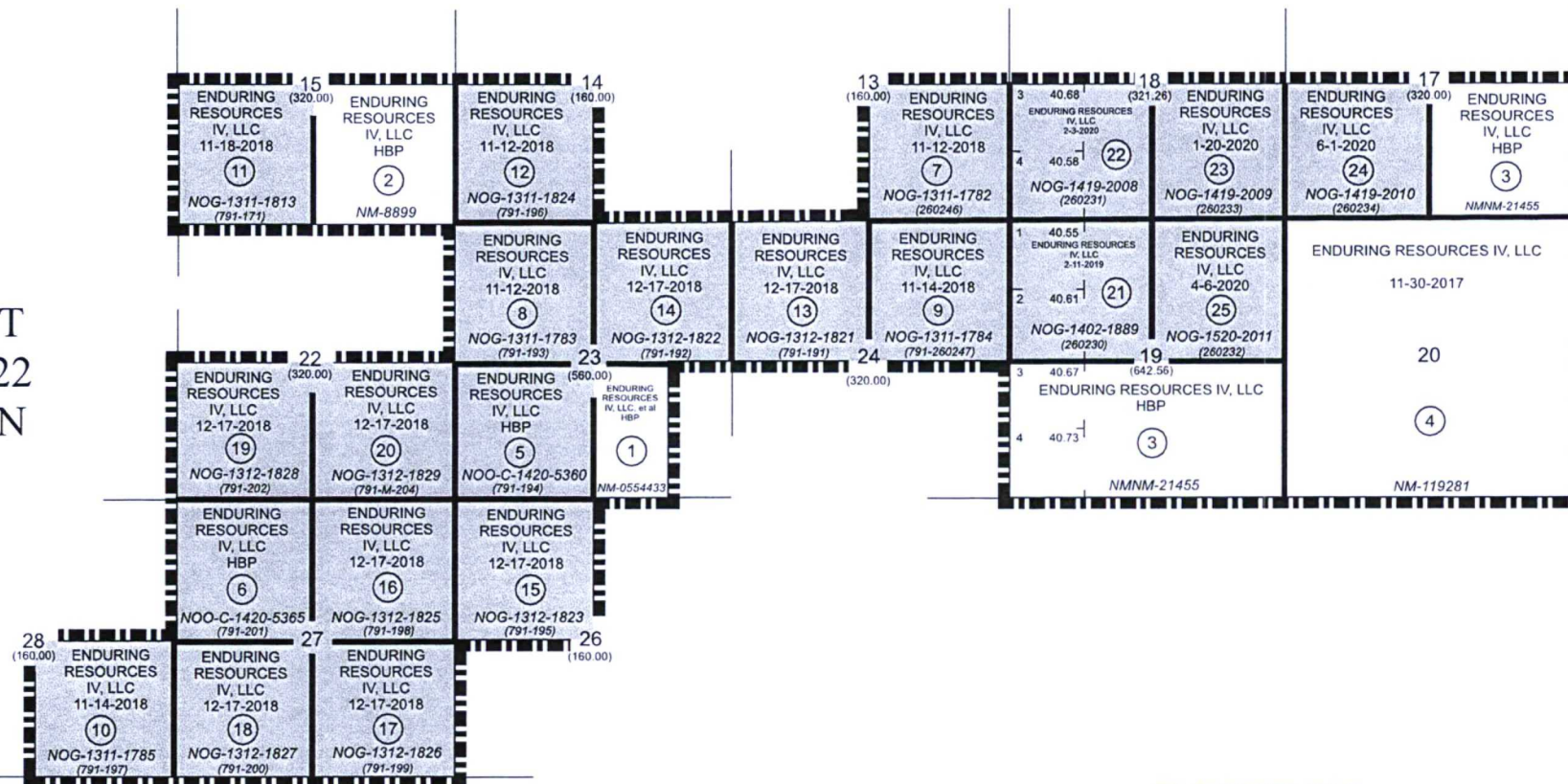
South Escavada Unit – NMNM 130812A
2019 Plan of Development
March 1, 2019



**Exhibit “A”
Map**

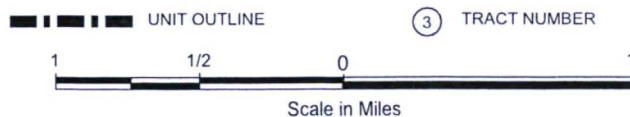
T
22
N

R 7 W

R 6 W



	ACREAGE	PERCENTAGE
	FEDERAL LANDS 1,361.40	28.82%
	ALLOTTED LANDS 3,362.42	71.18%
	TOTALS 4,723.82	100.00%



NOTE: UNLESS OTHERWISE NOTED HEREIN THE SECTIONS
ON THIS PLAT CONTAIN 640.00 ACRES

EXHIBIT "A"

SOUTH ESCAVADA UNIT AREA

SANDOVAL COUNTY, NEW MEXICO

ENDURING RESOURCES, LLC
DENVER, COLORADO

7-12-2018