

COMPANY: Bass Enterprises Production Company

WELL: Poker Lake Unit #226

FIELD: Nash Draw (Delaware)

COUNTY: Eddy STATE: New Mexico

COUNTY: Eddy
 Field: Nash Draw (Delaware)
 Location: 760' FSL & 760' FWL
 Well: Poker Lake Unit #226
 Company: Bass Enterprises Production Co

Schlumberger Platform Express Three Detector Litho Density Compensated Neutron / GR		LOCATION 760' FSL & 760' FWL Elev.: K.B. 3229.9 ft G.L. 3212.3 ft D.F. 3228.8 ft
Permanent Datum: Kelly Bushing Log Measured From: Kelly Bushing Drilling Measured From: Kelly Bushing	Ground Level: Kelly Bushing Elev.: 3212.3 ft 17.6 ft above Perm. Datum	SECTION 17 TOWNSHIP 24S RANGE 30E
API Serial No. 30-015-34105 Logging Date 24-Sep-2005	Run Number One Depth Driller 7644 ft Schlumberger Depth 7649 ft Bottom Log Interval 7631 ft Top Log Interval 200 ft Casing Driller Size @ Depth 8.625 in @ 824 ft Casing Schlumberger 822 ft Bit Size 7.875 in	Type Fluid In Hole Brine / Diesel Density 8.9 lbm/gal Viscosity 37 s Fluid Loss PH 9 Circulation Tank Source Of Sample 0.087 ohm.m @ 95 degF FM @ Measured Temperature @ RMF @ Measured Temperature @ Source RMF Measured @ 128 @ 128 RMF @ MRT @ 128 @ 128 Measured @ 128 @ 128 Time 24-Sep-2005 17:00 Time 24-Sep-2005 22:40 Location Roswell, N.M. R.Chung Simianne Hayden

Integrated Annulus Volume Every 100 F3
 Time Mark Every 60 S
 Format: 2_nuc Vertical Scale: 2" per 100' Graphics File Created: 24-Sep-2005 23:12
 OP System Version: 12C0-301 MCM
 HILTB-CTS SRPC-2699-HILT
 Output DLIS Files
 DEFAULT AIT_TLD_MCFL_CNL_013LUP FN:12 PRODUCER 24-Sep-2005 23:12

Output DLIS Files
 DEFAULT AIT_TLD_MCFL_CNL_013LUP FN:12 PRODUCER 24-Sep-2005 23:12 7650.0 FT 178.5 FT

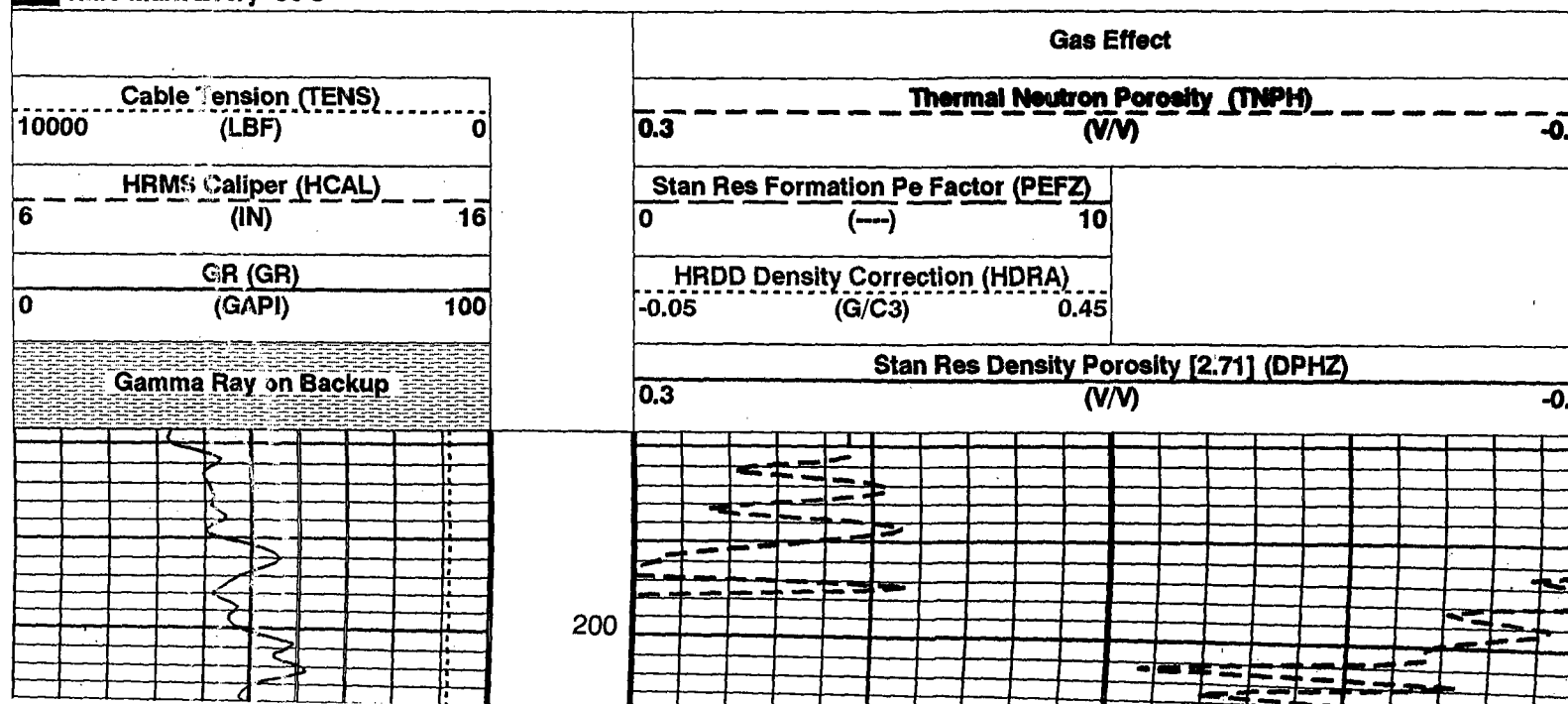
Integrated Hole/Cement Volume Summary
 Hole Volume = 3987.79 F3
 Cement Volume = 2862.56 F3 (assuming 5.50 IN casing O.D.)
 Computed from 7644.0 FT to 824.0 FT using data channel(s) HCAL

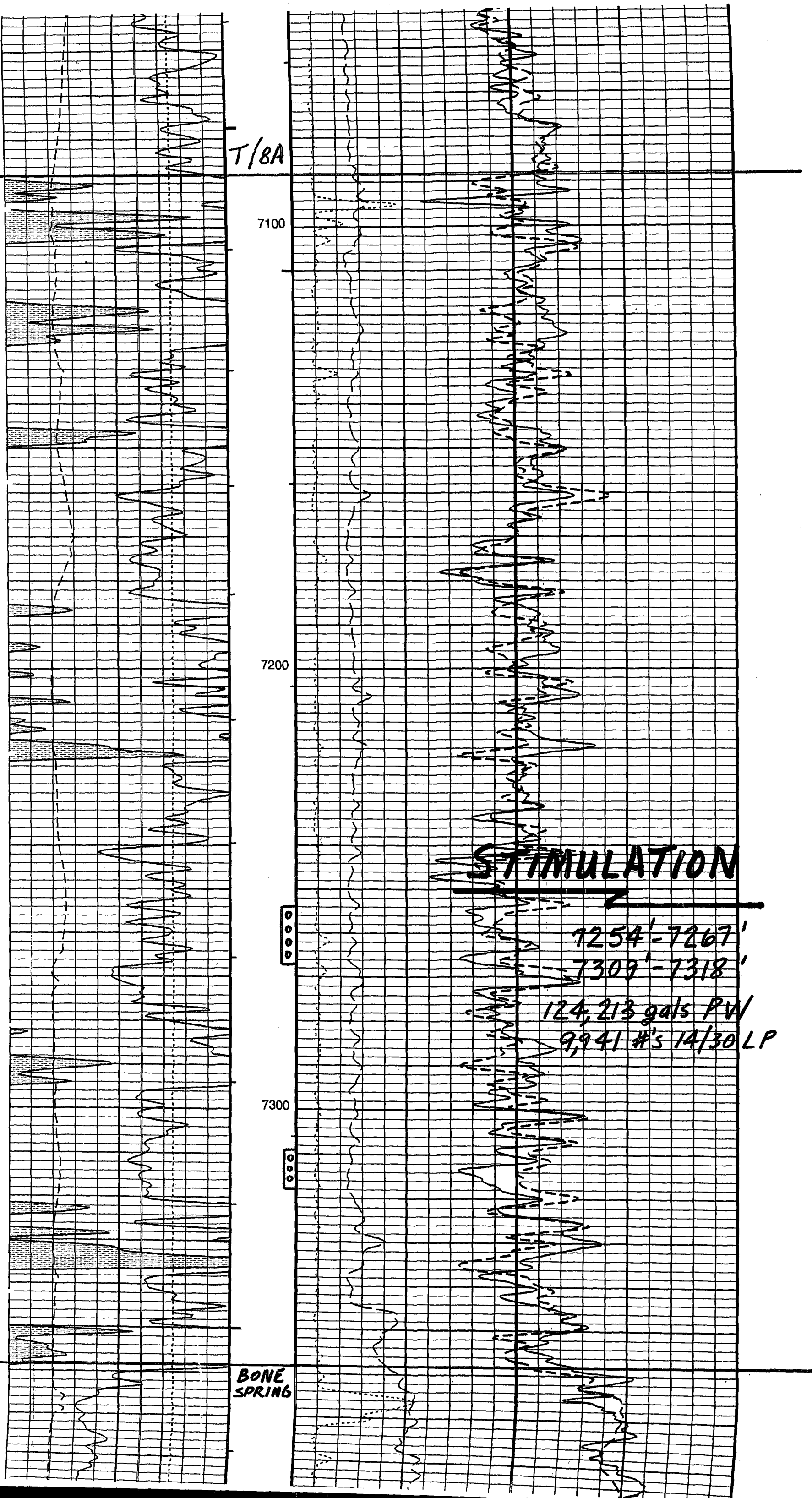
OP System Version: 12C0-301 MCM
 HILTB-CTS SRPC-2699-HILT

Changed Parameter Summary

DLIS Name	New Value	Previous Value	Depth & Time
BHS	CASED	OPEN	802.9 01:15:28
GCSE	BS	HCAL	802.9 01:15:26
TDL	7649.00 FT	7644.00 FT	2504.2 00:46:40

PIP SUMMARY
 Integrated Borehole Volume Every 10 F3
 Integrated Borehole Volume Every 100 F3
 Integrated Annulus Volume Every 10 F3
 Integrated Annulus Volume Every 100 F3
MAIN PASS 5" = 100'
 Time Mark Every 60 S





T/BA

7100

7200

7300

BONE SPRING

STIMULATION

7254' - 7267'

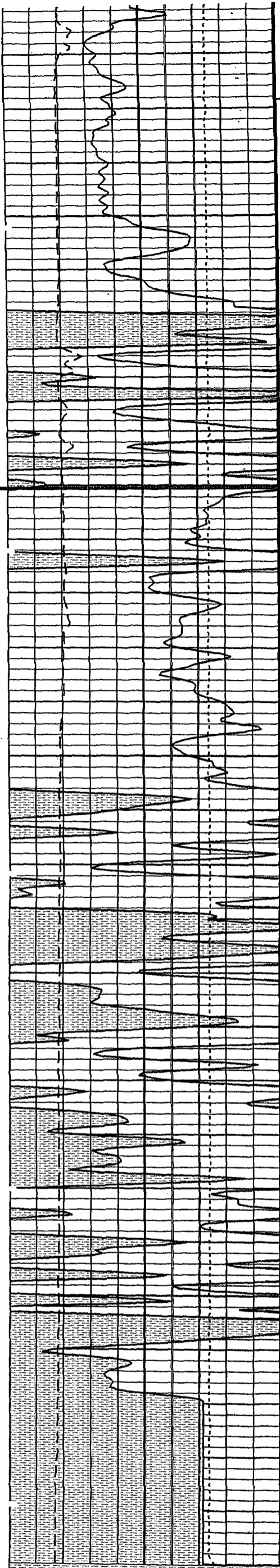
7309' - 7318'

124,213 gals PW

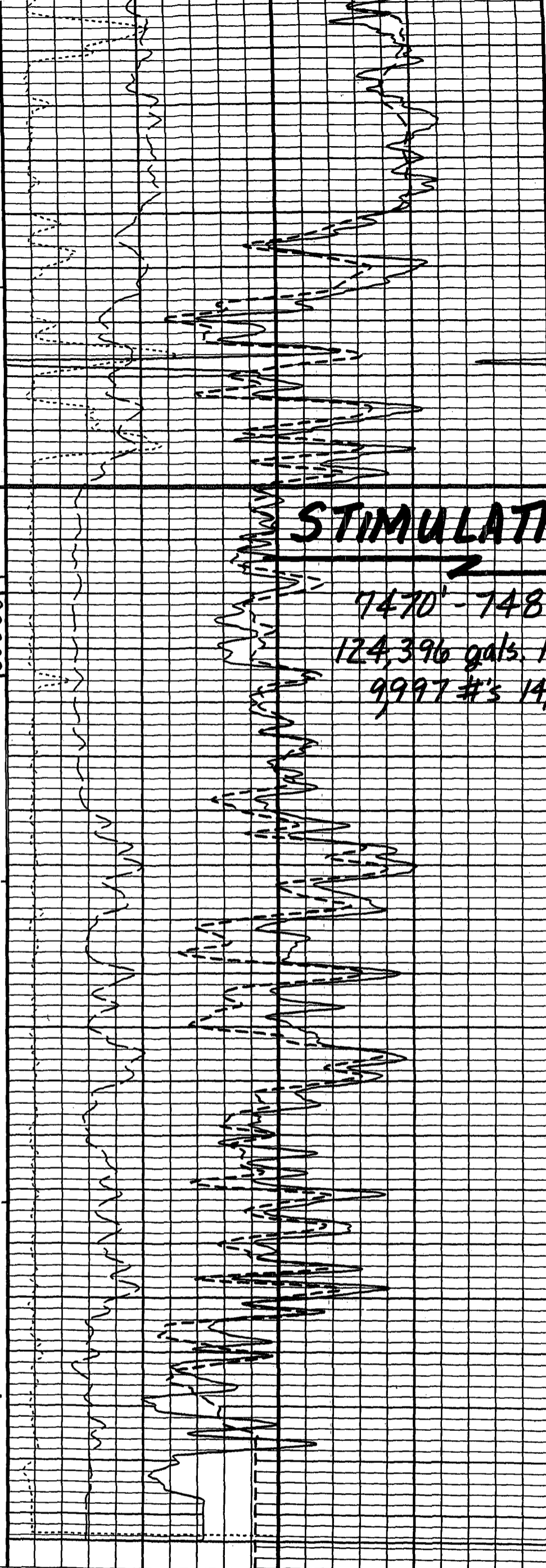
9,941 #'s 14/30 LP



24-226



ANALON



STIMULATION

7470' - 7485'
 124,396 gals. PW
 9997 #'s 14/30 LP

PLU-226

Gamma Ray on Backup		
0	GR (GR) (GAPI)	100
6	HRMS Caliper (HCAL) (IN)	16
10000	Cable Tension (TENS) (LBF)	0

0.3	Stan Res Density Porosity [2.71] (DPHZ) (V/V)	-0.1
-0.05	HRDD Density Correction (HDRA) (G/C3)	0.45
0	Stan Res Formation Pe Factor (PEFZ) (---)	10
0.3	Thermal Neutron Porosity (TNPH) (V/V)	-0.1
Gas Effect		

COMPANY: Bass Enterprises Production Company

WELL: Poker Lake Unit #226

FIELD: Nash Draw (Delaware)

COUNTY: Eddy STATE: New Mexico

Schlumberger
Platform Express
Array Induction Tool
Micro-CFL / Gamma Ray

COUNTY: Eddy
Field: Nash Draw (Delaware)
Location: 760' FSL & 760' FWL
Well: Poker Lake Unit #226
Company: Bass Enterprises Production Co

LOCATION		760' FSL & 760' FWL	Elev.: K.B. 3229.9 ft G.L. 3212.3 ft D.F. 3228.8 ft
Permanent Datum:	Ground Level		Elev.: 3212.3 ft
Log Measured From:	Kelly Bushing		17.6 ft above Perm. Datum
Drilling Measured From:	Kelly Bushing		
API Serial No.	SECTION	TOWNSHIP	RANGE
30-015-34105	17	24S	30E
Logging Date	24-Sep-2005		
Run Number	One		
Depth Driller	7644 ft		
Schlumberger Depth	7649 ft		
Bottom Log Interval	7641 ft		
Top Log Interval	3250 ft		
Casing Driller Size @ Depth	8.625 in @ 824 ft		
Casing Schlumberger	922 ft		
Bit Size	7.875 in		
Type Fluid In Hole	Brine / Diesel		
Density	Viscosity	37 s	
8.9 lbm/gal	PH	9	
Source Of Sample	Circulation Tank		
RM @ Measured Temperature	0.087 ohm.m @ 95 degF		
RMF @ Measured Temperature	@ @ @		
RMC @ Measured Temperature	@ @ @		
Source RMF	RMC	Measured	
RM @ MRT	RMF @ MRT	@ 128 @ 128 @	
0.066 @ 128			
Maximum Recorded Temperatures	128 degF		
Circulation Stopped	Time	24-Sep-2005 17:00	
Logger On Bottom	Time	24-Sep-2005 22:40	
Unit Number	Location	3049 Roswell, N.M.	
Recorded By	R.Chung		
Witnessed By	Simlaine Hayden		

Output DLIS Files

DEFAULT AIT_TLD_MCFL_CNL_013LUP FN:12 PRODUCER 24-Sep-2005 23:12

OP System Version: 12C0-301

MCM

HILTB-CTS SRPC-2699-HILT

PIP SUMMARY

- T Integrated Borehole Volume Every 10 F3
- └ Integrated Borehole Volume Every 100 F3
- └ Integrated Annulus Volume Every 10 F3
- └ Integrated Annulus Volume Every 100 F3

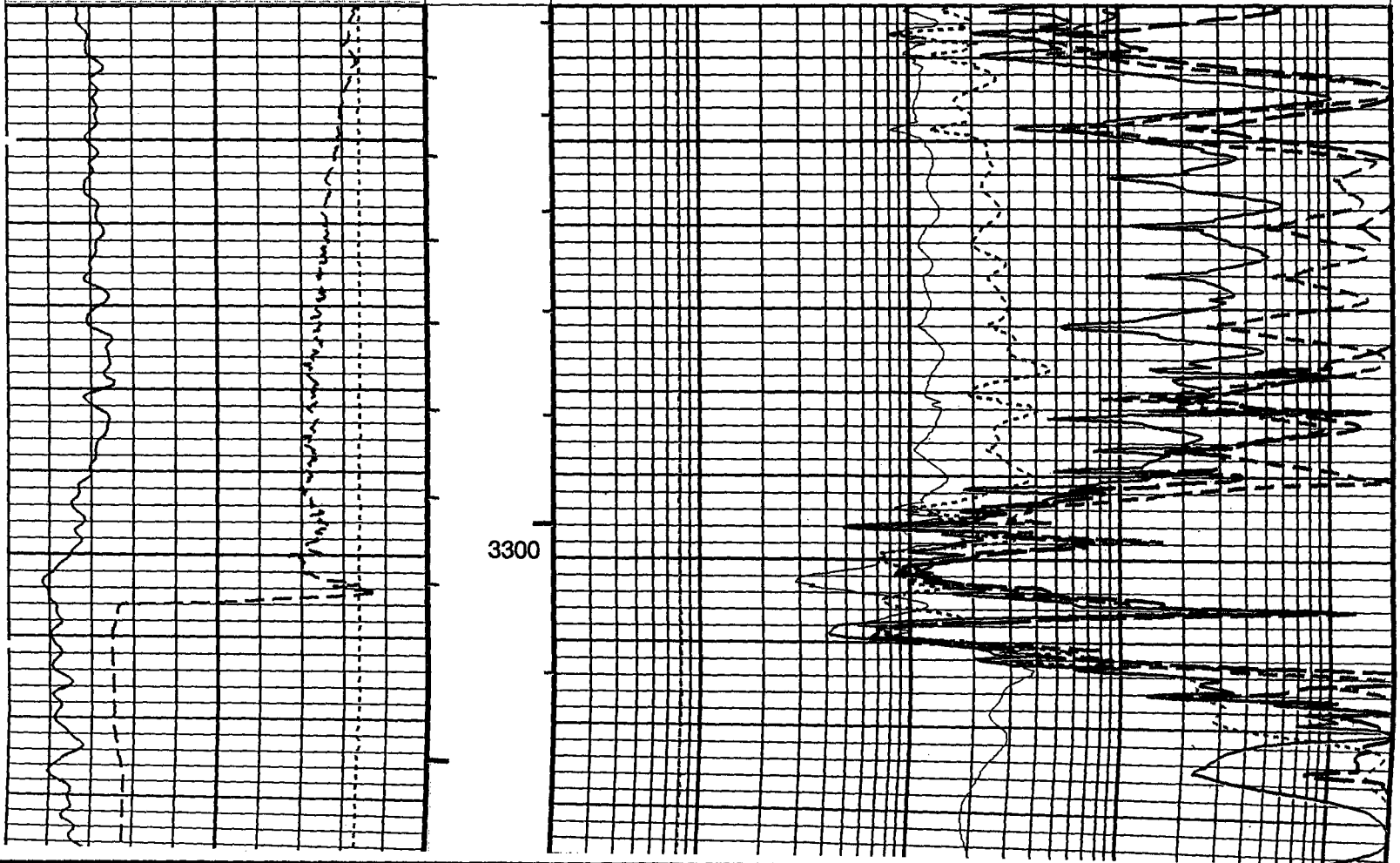
MAIN PASS 5" = 100'

Time Mark Every 60 S

AIT-H Mud Full Cal (AHMF)		0.02	200
(OHMM)			
AIT-H 90 Inch Investigation (AHT90)		0.2	2000
(OHMM)			
AIT-H 60 Inch Investigation (AHT60)		0.2	2000
(OHMM)			
AIT-H 30 Inch Investigation (AHT30)		0.2	2000
(OHMM)			
AIT-H 20 Inch Investigation (AHT20)		0.2	2000
(OHMM)			
AIT-H 10 Inch Investigation (AHT10)		0.2	2000
(OHMM)			

Cable Tension (TENS)	0
(LBF)	10000
HRMS Calliper (HCAL)	16
(IN)	6
GR (GR)	100
(GAPI)	0

Gamma Ray on Backup



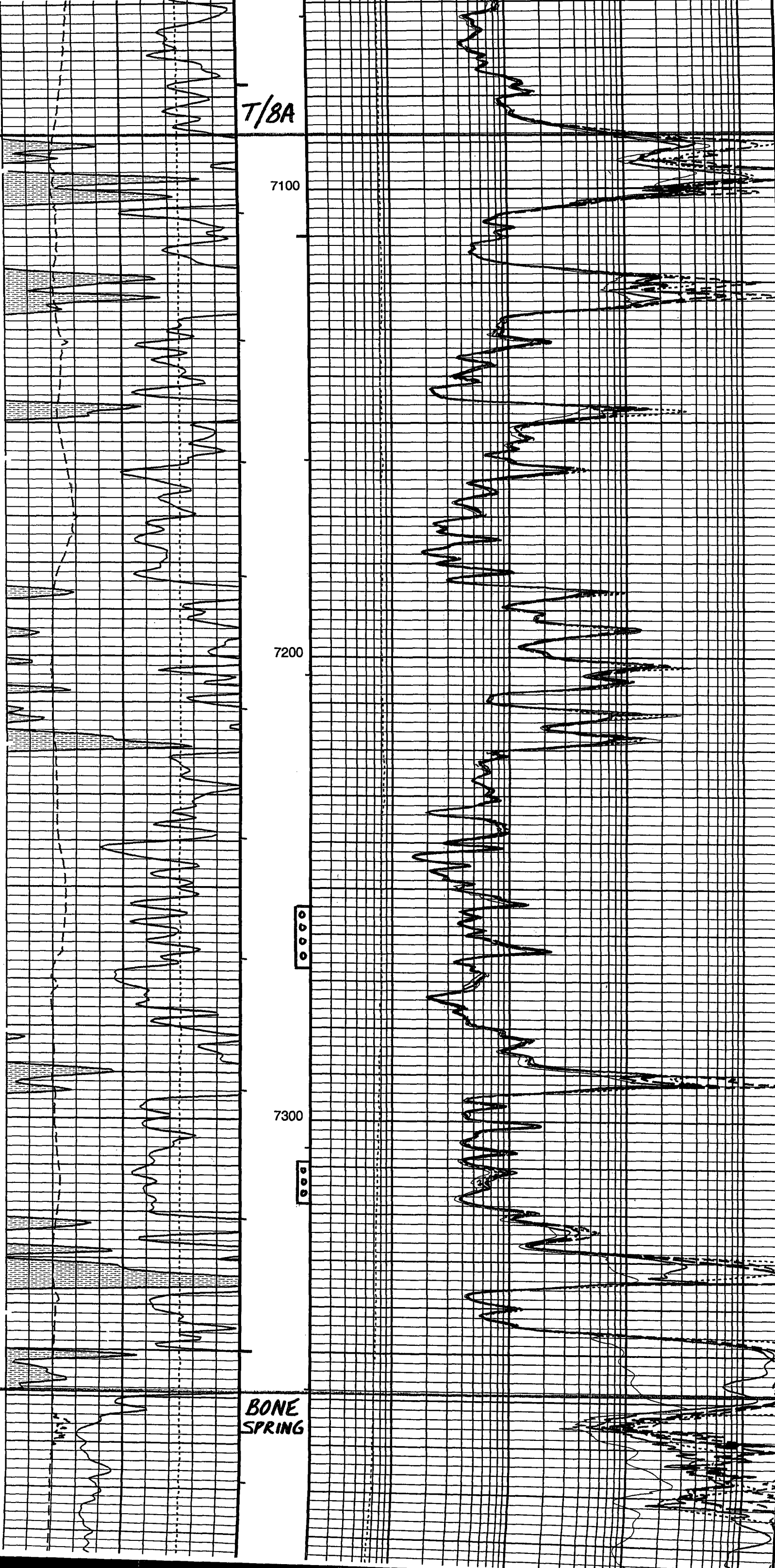
T/BA

7100

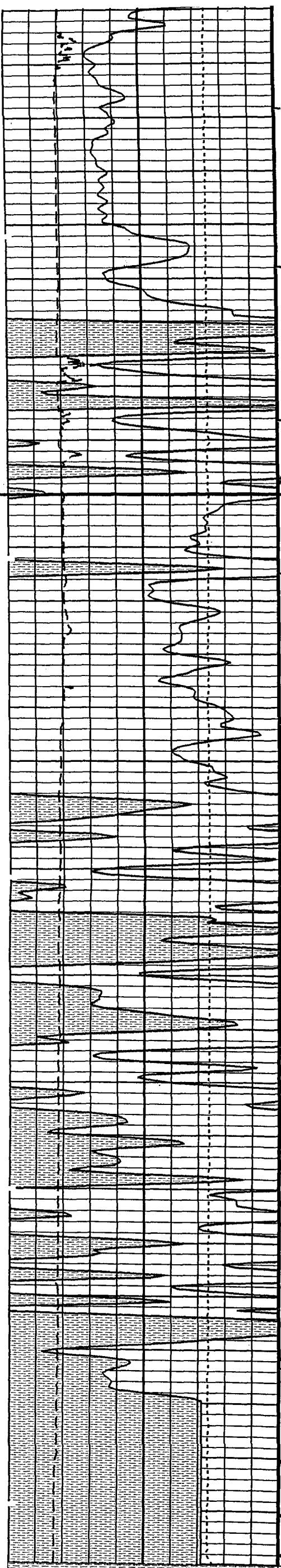
7200

7300

BONE
SPRING



PLU-226



AVALDN

7400

7500

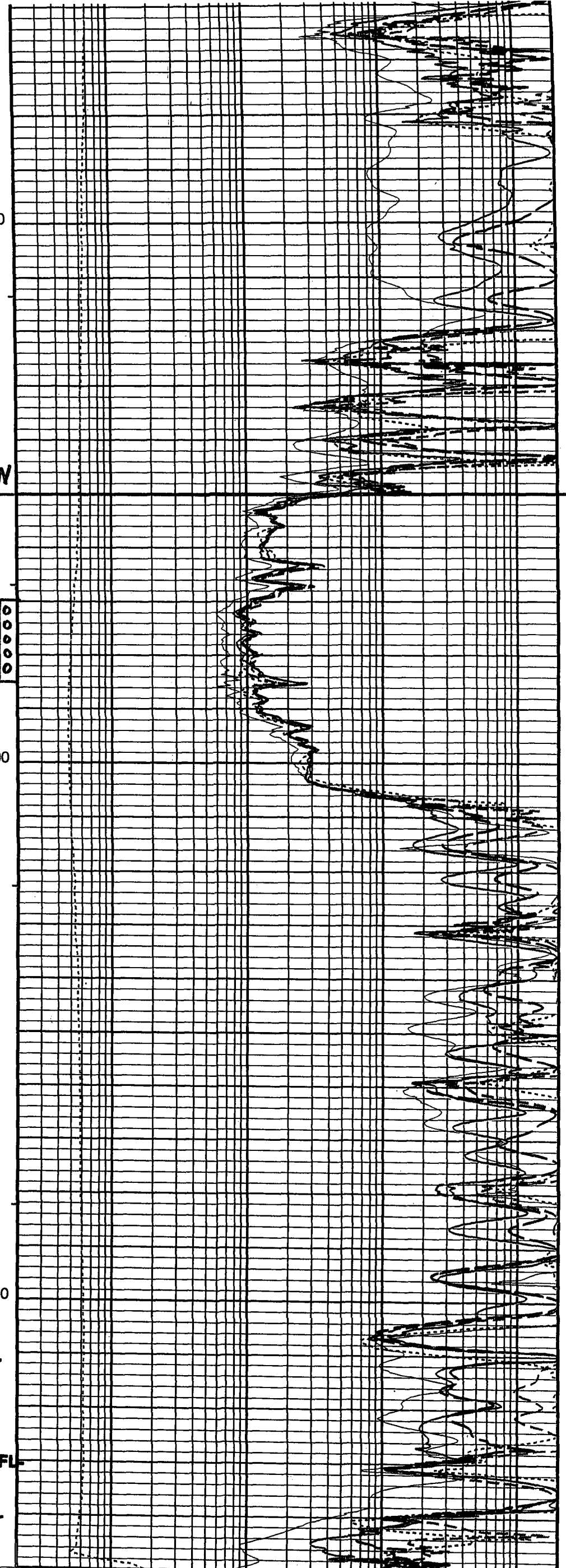
7600

FR GR-

FR MCFL

FR AIT-

TD



Gamma Ray on Backup		
0	GR (GR) (GAPI)	100
6	HRMS Calliper (HCAL) (IN)	16
10000	Cable Tension (TENS) (LBF)	0

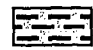











0.2	AIT-H 10 Inch Investigation (AHT10) (OHMM)	2000
0.2	AIT-H 20 Inch Investigation (AHT20) (OHMM)	2000
0.2	AIT-H 30 Inch Investigation (AHT30) (OHMM)	2000
0.2	AIT-H 60 Inch Investigation (AHT60) (OHMM)	2000
0.2	AIT-H 90 Inch Investigation (AHT90) (OHMM)	2000

PLU-226

MORCO GEOLOGICAL SERVICES

Carlsbad, New Mexico - (800) 748-2340

Company: Bass
 Well: Poker Lake Unit #226
 Location: Sec: 17 Twn: 24S Rge: 30E Blk:
 Survey: 760'FSL&760'FWL API: 030-015-34105
 County: Eddy State: NM
 Elevation: KB: 3229 GL: 3212
 Contractor: ADOBE RIG 11 Spud Date:
 Depth Logged: From: 3400' To:
 Date Logged: From: 9/16/05 To:
 Logger: THOMPSON, BROADSTREET Unit: 15

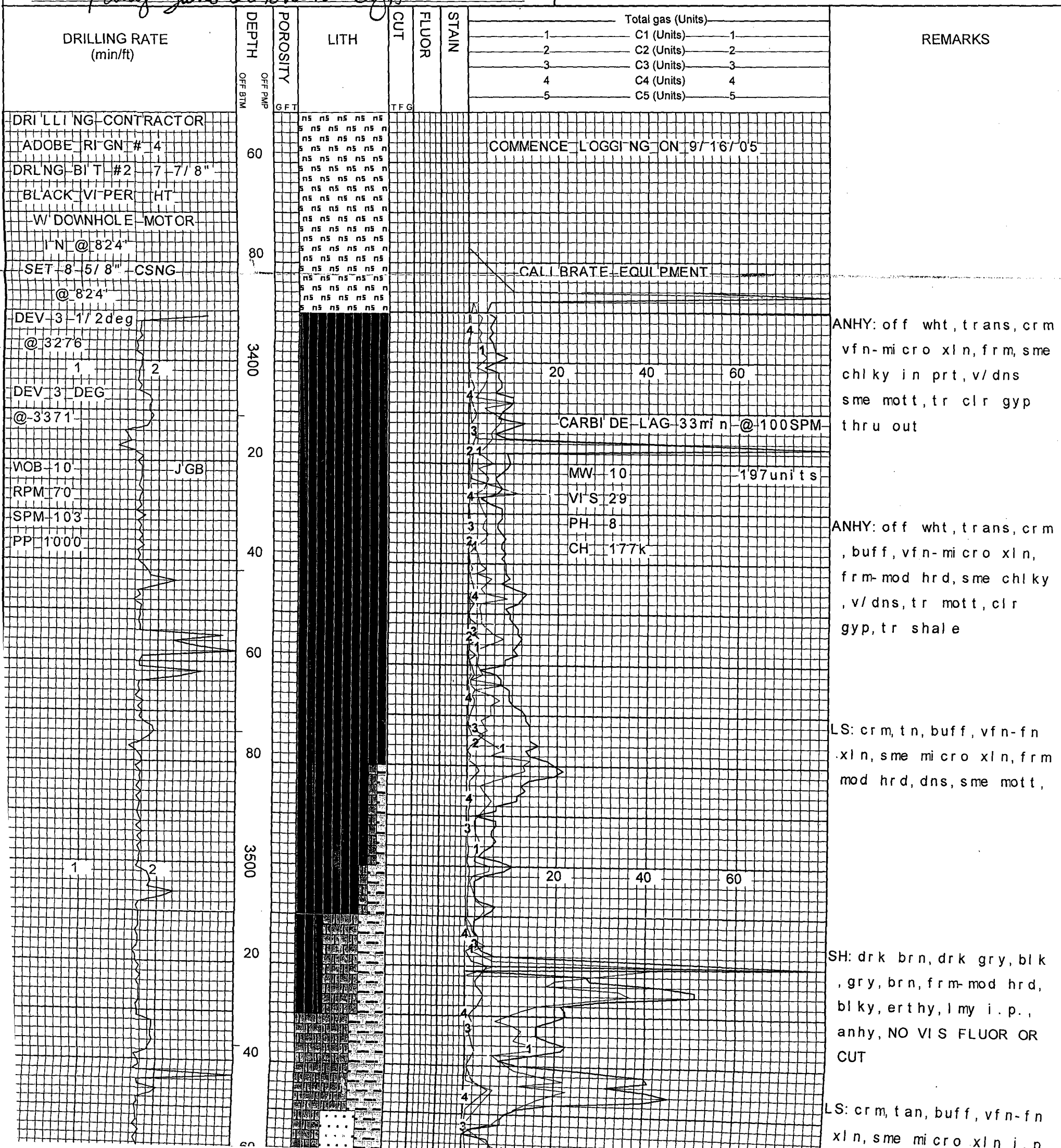
	Shale		Limestone		Salt
	Siltstone		Dolomite		Igneous
	Sandstone		Anhydrite		Metamorphic
	Conglomerate		Chert		No Sample

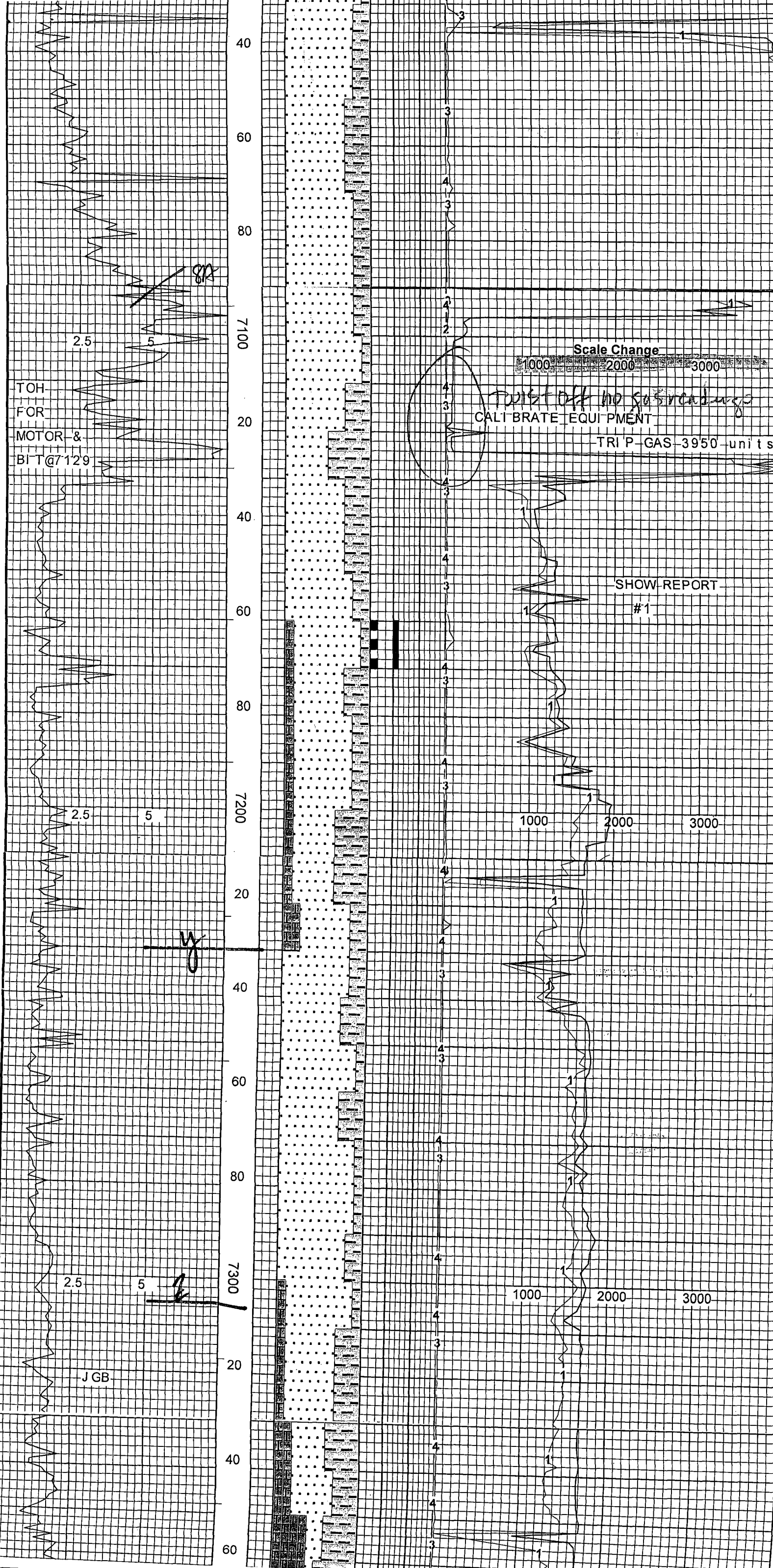
505 706 1915

3230

Note: gas increases toward TD - may be due to organic activity in mud system - note it doesn't seem assoc. w/ any sand or shov. Dgt.

Total Gas Calibration: 100 Gas Units = 1% Methane Equivalent
 Chromatograph Calibration: 1 Unit = 100 ppm of each component
 Total Gas Detector Type: Catalytic Combustion Filament (Hot Wire)
 Chromatograph Type: Catalytic Combustion Filament (Hot Wire)
 Extractor Evacuation Rate: 10 Standard Cubic Feet per Hour





SH: drk gry, blk, gry, drk
brn, blk, frm-mod hrd,
dll rthy, carb i.p., tr
silty, vfn mica, thru
out, tr pyr, sli tr
aren i.p.

SS: frstd, tn, lt gry, clr
, vfn gr, sub ang-rnd,
lsly-mod consol, sme
unconsol, wll srted, wll
cmt'd, calc/cly mtrx,
abndnt free wht/gry
mott clays

SH: drk gry, gry, blk, drk
brn, blk, frm-mod hrd
rthy, carb in prt, slty
vfn mica, tr pyr. lmy
in prt

SS: frstd, lt gry, tn, clr
vfn gr, sub rnd-sub
ang, lsly-mod consol
sme unconsol, wll srted
frly-mod cmt'd, v/fria
calc mtrx, 10-20% pale
ylw fluor, tr slw pale
ylw wet cutfr amt
fltnng gr

SH: drk brn, drk gry, blk
blk, frm-mod hrd, rthy
carb, tr slty, mott, vfn
mica thru out, tr pyr
lmy in prt

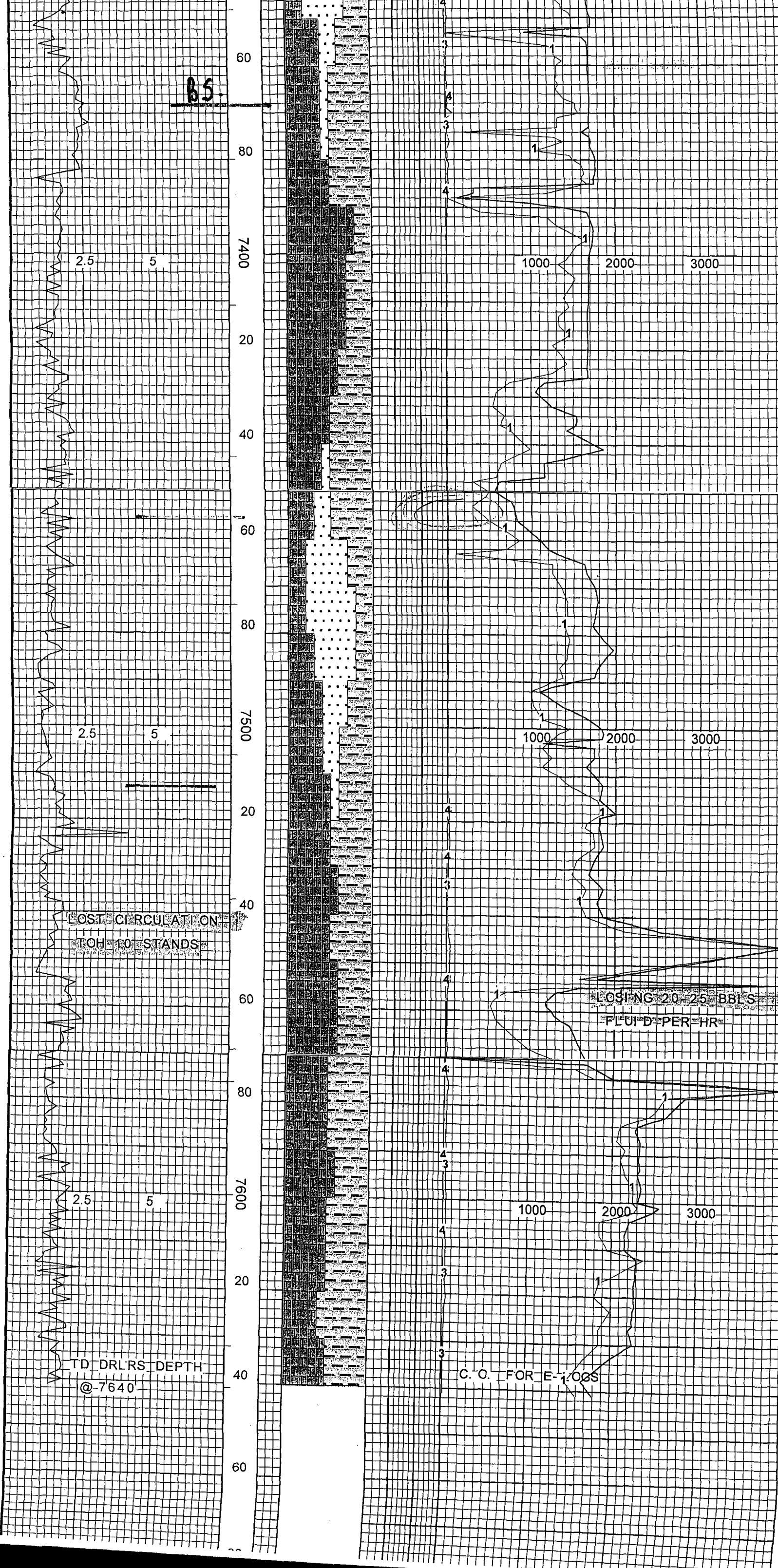
SH: drk gry, drk brn, gry
blk, blk, frm-mod hrd
rthy, tr slty, carb in
prt, vfn mica thru out
tr pyr

SS: frstd, tn, lt gry, clr
vfn gr, occ fn gr, sub
rnd-sub ang, lsly-mod
consol, sme unconsol
wll srted, frly-mod cmt
v/fria ~~NO VLS FLUOR~~
~~OR CUT~~

PLU-226

LS: tn, brn, drk brn, crm,
lt brn, frm-mod hrd,
dns, fn-vfn xln, sme
micro xln, dns, mod
argil, carb

SS: frstd, tn, lt gry, clr
, vfn gr, occ fn, sub



SS: frstd, tn, lt gry, clr
 , vfn gr, occ fn, sub
 rnd, subang, lsly-mod
 consol, sme unconsol,
 wl srted, frly-mod cmt d
 , v/fria. ~~NO VIS FLUOR~~
~~OR CUT~~

LS: tn, brn, drk brn, crm,
 frm-mod hrd, dns, fn-
 vfn xln, sme micro, dns
 argil, carb

SS: frstd, clr, tn, vfn-fn
 gr, sub rnd-rndd, sub
 ang, unconsol, sme lsly
 consol, wl srted, frly
 cmt d, silic mtrx, free
 wht/gry mott clay

SH: drk gry, drk brn, gry
 , blk, blk, frm-mod hrd
 , rthy, tr slty, carb in
 prt, vfn mica, tr pyr

***** NOTE *****
~~LOST 400 BBL'S OF~~
~~FLUID DOWN HOLE~~
~~50 BBL'S TO THE OPEN~~
~~PITS~~

LS: drk brn, brn, lt brn
 vfn-fn xln, frm-mod hr
 mott, arg in prt

PLU-226

SH: drk gry, gry, drk brn
 blk, frm-mod hrd, rthy
 slty, tr vfn mica, tr
 pyr, lmy in prt

2.5 5

1000 2000 3000

2.5 5

1000 2000 3000

2.5 5

1000 2000 3000

TD DRLRS DEPTH
 @ 7640

C.O. FOR E-100S

LOST CIRCULATION
 TOH 10 STANDS

LOSTING 20-25 BBL'S
 FLUID PER HR

B.S.