

COMPANY: Bass Enterprises Production Company

WELL: Poker Lake Unit #231

FIELD: Nash Draw (Delaware)

COUNTY: Eddy STATE: New Mexico

COUNTY: Eddy
 Field: Nash Draw (Delaware)
 Location: 330' FNL & 630' FEL
 Well: Poker Lake Unit #231
 Company: Bass Enterprises Production Co

Schlumberger
 Platform Express
 Three Detector Litho-Density
 Compensated Neutron / GR

LOCATION: 330' FNL & 630' FEL
 Elev.: K.B. 3201.8 ft
 G.L. 3181.6 ft
 D.F. 3200.8 ft
 Permanent Datum: Ground Level
 Log Measured From: Kelly Bushing
 Drilling Measured From: Kelly Bushing
 Elev.: 3181.6 ft
 20.2 ft above Perm. Datum

API Serial No. 30-015-34072
 SECTION 19
 TOWNSHIP 24S
 RANGE 30E

Logging Date	30-May-2005	
Run Number	One	
Depth Driller	7550 ft	
Schlumberger Depth	7549 ft	
Bottom Log Interval	7531 ft	
Top Log Interval	200 ft	
Casing Driller Size @ Depth	8.625 in @ 550 ft	
Casing Schlumberger	547 ft	
Bit Size	7.875 in	
Type Fluid In Hole	Emulsion	
Density	8.9 lbm/gal	46 s
Fluid Loss	100 cm3	9
Source Of Sample	Circulation Tank	
RM @ Measured Temperature	0.123 ohm.m	@ 94 degF
RMF @ Measured Temperature	@	@
RMC @ Measured Temperature	@	@
Source RMF	FMC	@
RM @ MRT	Measured	@
RMF @ MRT	0.096 @ 123	@ 123
Recorded Temperatures	123 degF	@ 123
topped	Time	29-May-2005 18:00
bottom	Time	30-May-2005 1:50
Location	3049	Roswell, N.M.
	Brian Bartley	
	Simianne Hayden	

Changed Parameter Summary

DLIS Name	New Value	Previous Value	Depth & Time
BHS	CASED	OPEN	526.8 04:36:34

PIP SUMMARY

- └ Integrated Borehole Volume Every 10 F3
- └ Integrated Borehole Volume Every 100 F3
- └ Integrated Annulus Volume Every 10 F3
- └ Integrated Annulus Volume Every 100 F3

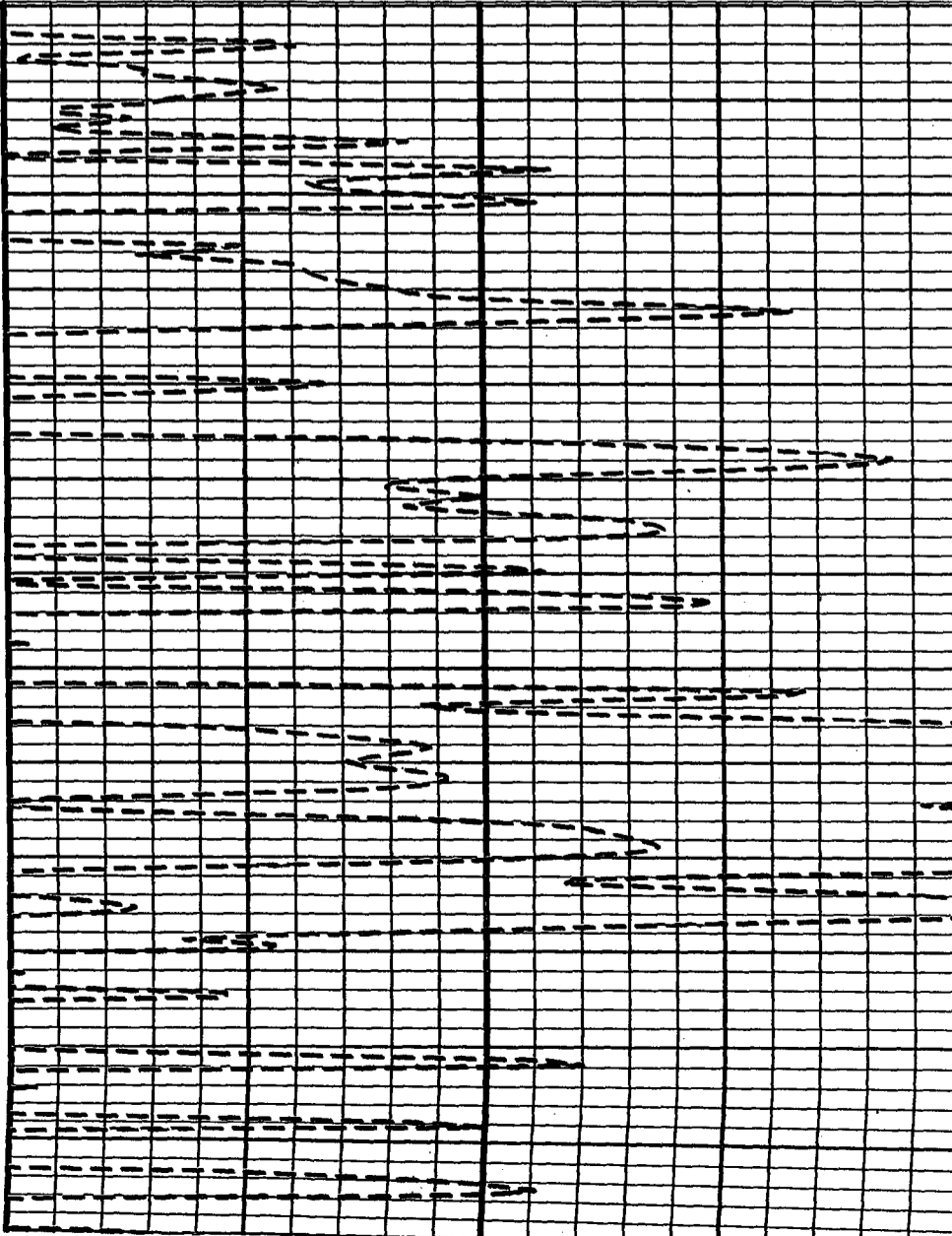
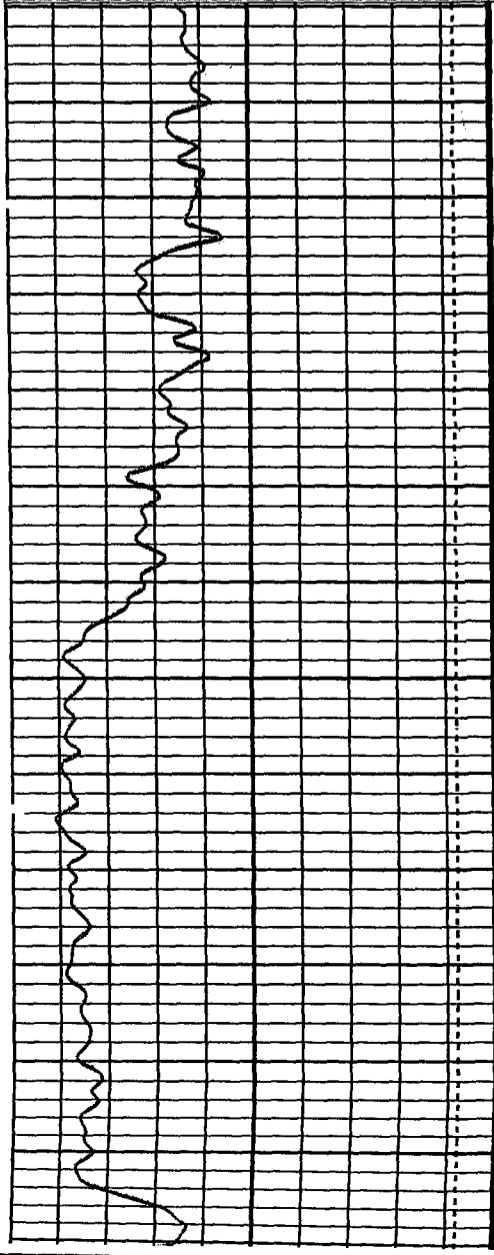
MAIN PASS 5" = 100'

Time Mark Every 60 S

Cable Tension (TENS) (LBF)	0
HRMS Caliper (HCAL) (IN)	16
GR (GR) (GAPI)	100

Gas Effect	
Thermal Neutron Porosity (TNPH) (V/V)	-0.1
Stan Res Formation Pe Factor (PEFZ) (—)	10
HRDD Density Correction (HDRA) (G/C3)	0.45
Stan Res Density Porosity [2.71] (DPHZ) (V/V)	-0.1

Gamma Ray on Backup



7000

T/8A

7100

STIMULATION

7172' - 7184'

7260' - 7268'

123,812 gals. PW

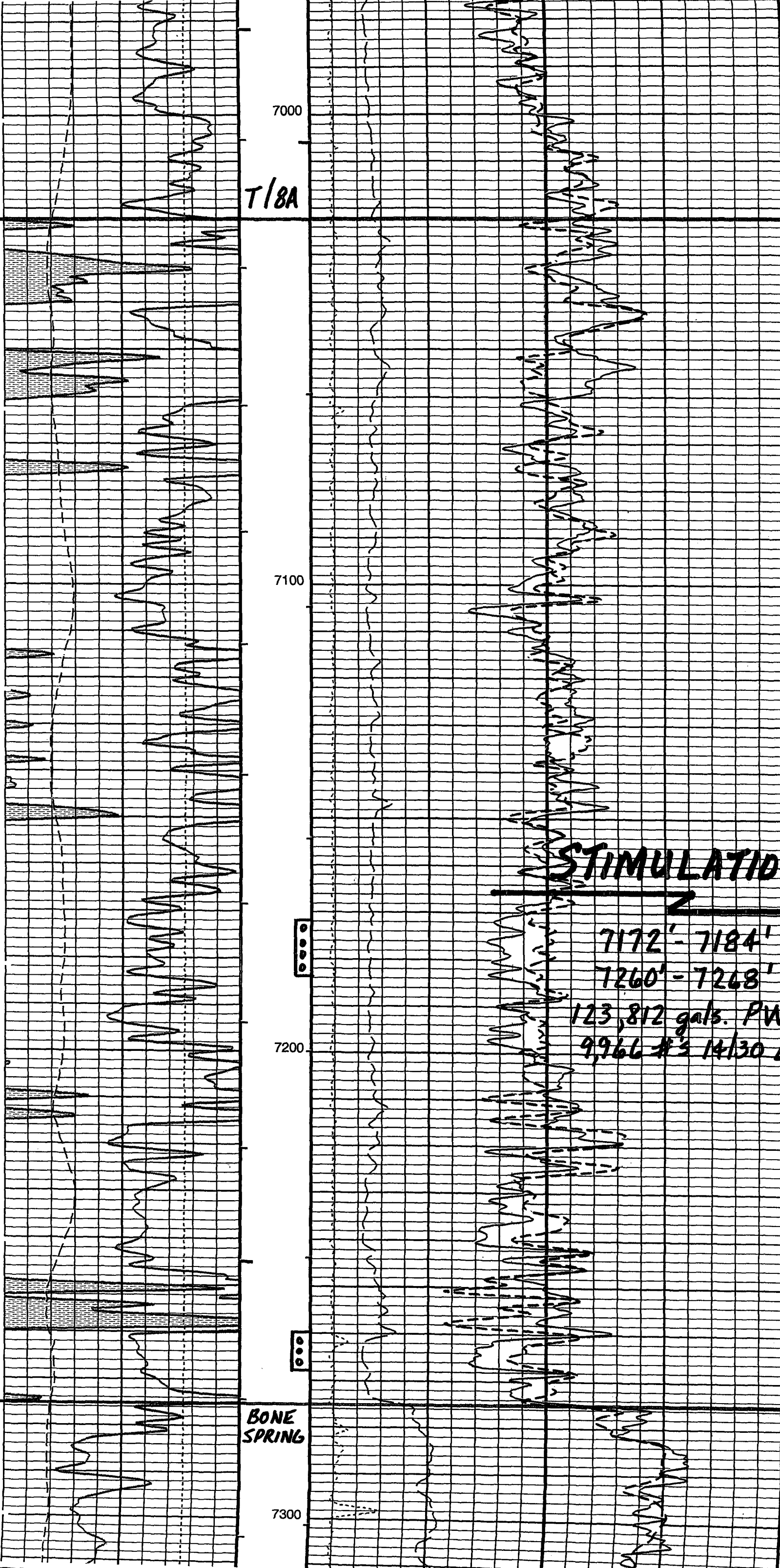
9,966 #s 14/30 LP

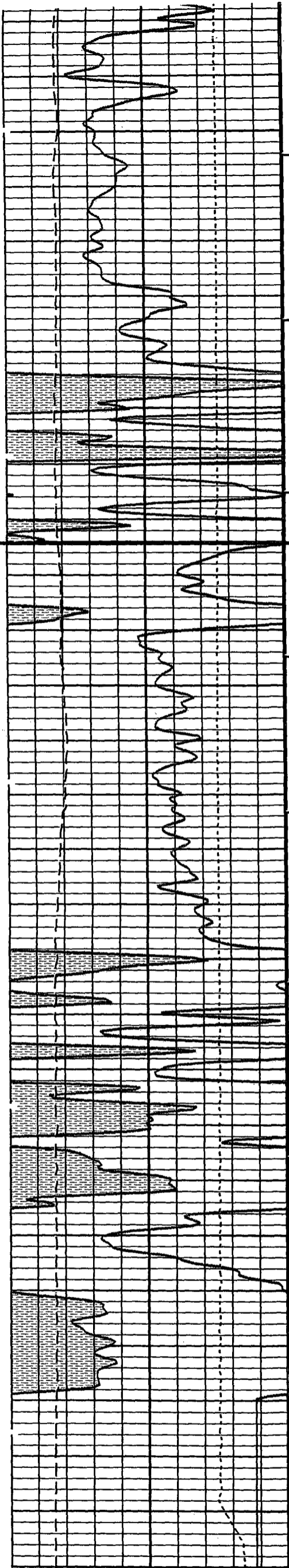
7200

BONE
SPRING

7300

2U-231





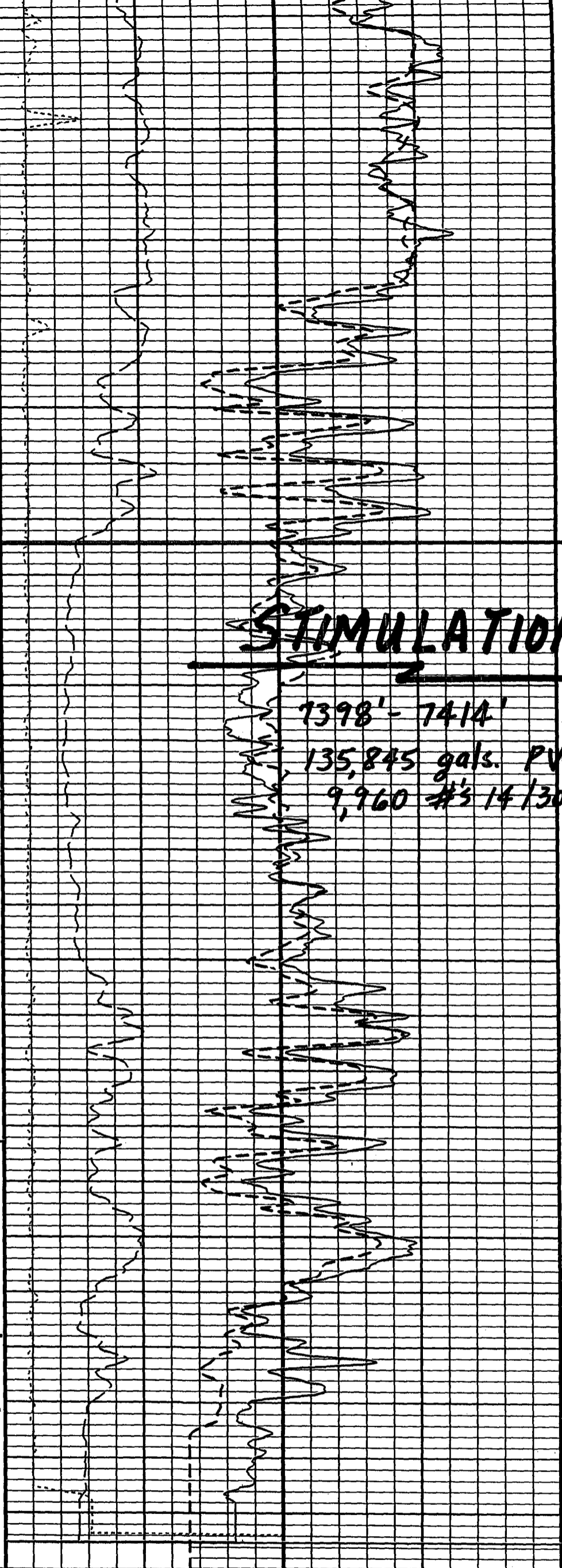
AVALON

7300

7400

7500

-FR GR-
-FR CNL-
-FR TLD-
--TD--



STIMULATION

7398' - 7414'
135,845 gals. PW
9,960 #'s 14/30 LP

Gamma Ray on Backup		
0	GR (GR) (GAPI)	100
6	HRMS Caliper (HCAL) (IN)	16
10000	Cable Tension (TENS) (LBF)	0

0.3	Stan Res Density Porosity [2.71] (DPHZ) (V/V)	-0.1
-0.05	HRDD Density Correction (HDRA) (G/C3)	0.45
0	Stan Res Formation Pe Factor (PEFZ) (---)	10
0.3	Thermal Neutron Porosity (TNPH) (V/V)	-0.1
Gas Effect		

PLU-231

PIP SUMMARY

Integrated Borehole Volume Every 10 F3

COMPANY Bass Enterprises Production Company

WELL: Poker Lake Unit #231
FIELD: Nash Draw (Delaware)

COUNTY: Eddy STATE: New Mexico

Schlumberger

**Platform Express
 Array Induction Tool
 Gamma Ray**

COUNTY: Eddy
 Field: Nash Draw (Delaware)
 Location: 330' FNL & 630' FEL
 Well: Poker Lake Unit #231
 Company: Bass Enterprises Production Co

LOCATION
 330' FNL & 630' FEL
 Permanent Datum: Ground Level
 Log Measured From: Kelly Bushing
 Drilling Measured From: Kelly Bushing
 Elev.: K.B. 3201.8 ft
 G.L. 3181.6 ft
 D.F. 3200.8 ft
 Elev.: 20.2 ft above Perm. Datum

API Serial No. 30-015-34072
 SECTION 19
 TOWNSHIP 24S
 RANGE 30E

Logging Date	30-May-2005
Run Number	One
Depth Driller	7550 ft
Schlumberger Depth	7549 ft
Bottom Log Interval	7541 ft
Top Log Interval	3300 ft
Casing Driller Size @ Depth	8.625 in @ 550 ft
Casing Schlumberger	547 ft
Bit Size	7.875 in
Type Fluid In Hole	Emulsion
Density	8.9 lbm/gal
Fluid Loss	100 cm3
Source Of Sample	Circulation Tank
RM @ Measured Temperature	0.123 ohm.m @ 94 degF
RMF @ Measured Temperature	@ @ @
RMF @ Measured Temperature	@ @ @
Source RMF	Measured
RM @ MRT	0.096 @ 123 @ 123
Maximum Recorded Temperatures	123 degF
Circulation Stopped	29-May-2005 18:00
Logger On Bottom	30-May-2005 1:50
Unit Number	3049
Recorded By	Brian Bartley
Witnessed By	Simianne Hayden

Integrated Borehole Volume Every 10 F3
 Integrated Borehole Volume Every 100 F3
 Integrated Annulus Volume Every 10 F3
 Integrated Annulus Volume Every 100 F3

MAIN PASS 2" = 100'

Time Mark Every 60 S

Format: 2_res Vertical Scale: 2" per 100'

Graphics File Created: 30-May-2005 02:34

OP System Version: 12C0-301
MCM

HILTB-CTS SRPC-2699-HILT

Output DLIS Files

DEFAULT AIT_TLD_MCFL_CNL_013LUP FN:12 PRODUCER 30-May-2005 02:34

Schlumberger

Main Pass 5" = 100'

MAXIS Field Log

Output DLIS Files

DEFAULT AIT_TLD_MCFL_CNL_013LUP FN:12 PRODUCER 30-May-2005 02:34

OP System Version: 12C0-301
MCM

HILTB-CTS SRPC-2699-HILT

PIP SUMMARY

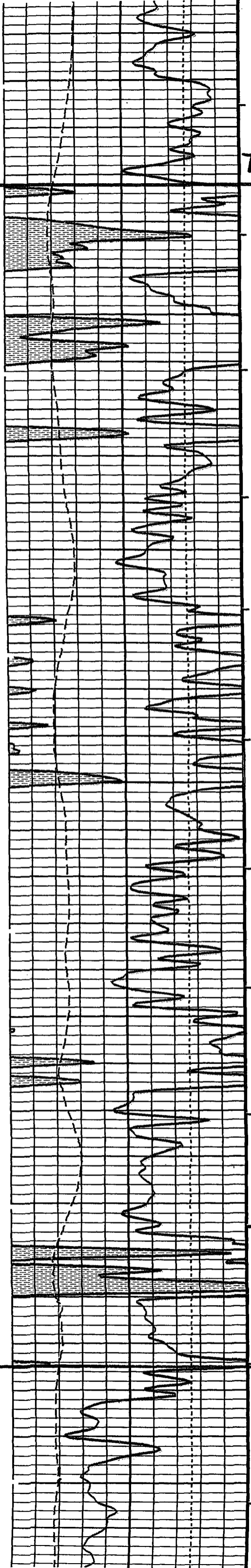
Integrated Borehole Volume Every 10 F3
 Integrated Borehole Volume Every 100 F3
 Integrated Annulus Volume Every 10 F3
 Integrated Annulus Volume Every 100 F3

MAIN PASS 5" = 100'

Time Mark Every 60 S

	AIT-H Mud Full Cal (AHMF) (OHMM)	200
	AIT-H 90 Inch Investigation (AHT90) (OHMM)	2000
	AIT-H 60 Inch Investigation (AHT60) (OHMM)	2000
	AIT-H 30 Inch Investigation (AHT30) (OHMM)	2000
	AIT-H 20 Inch Investigation (AHT20) (OHMM)	2000
	AIT-H 10 Inch Investigation (AHT10) (OHMM)	2000
Cable Tension (TENS) (LBF)		0
HRMS Caliper (HCAL) (IN)		16
GR (GR) (GAPI)		100
Gamma Ray on Backup		

3300



T/8A

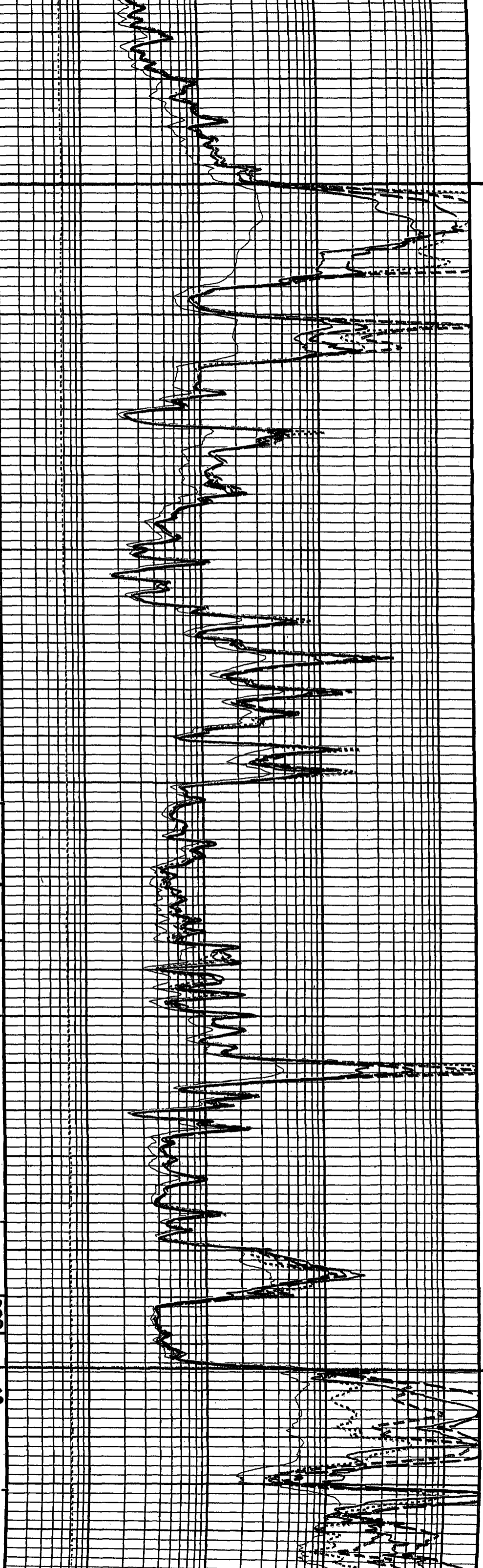
7000

7100

7200

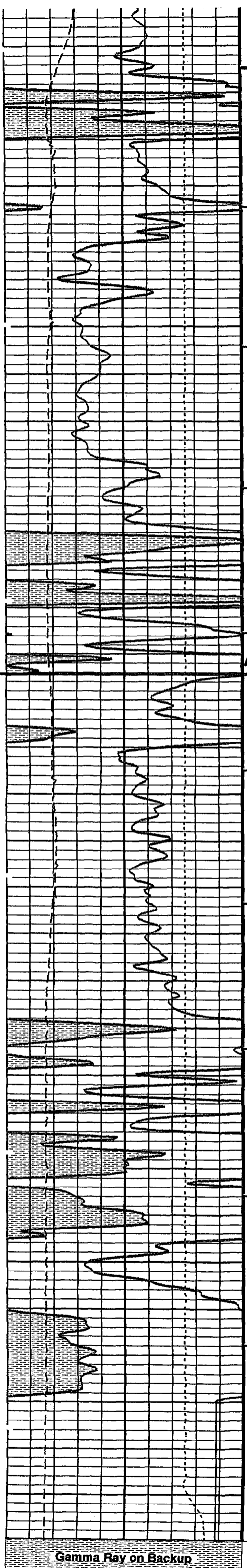
BONE SPRING

7300



PLU-231

LU-231



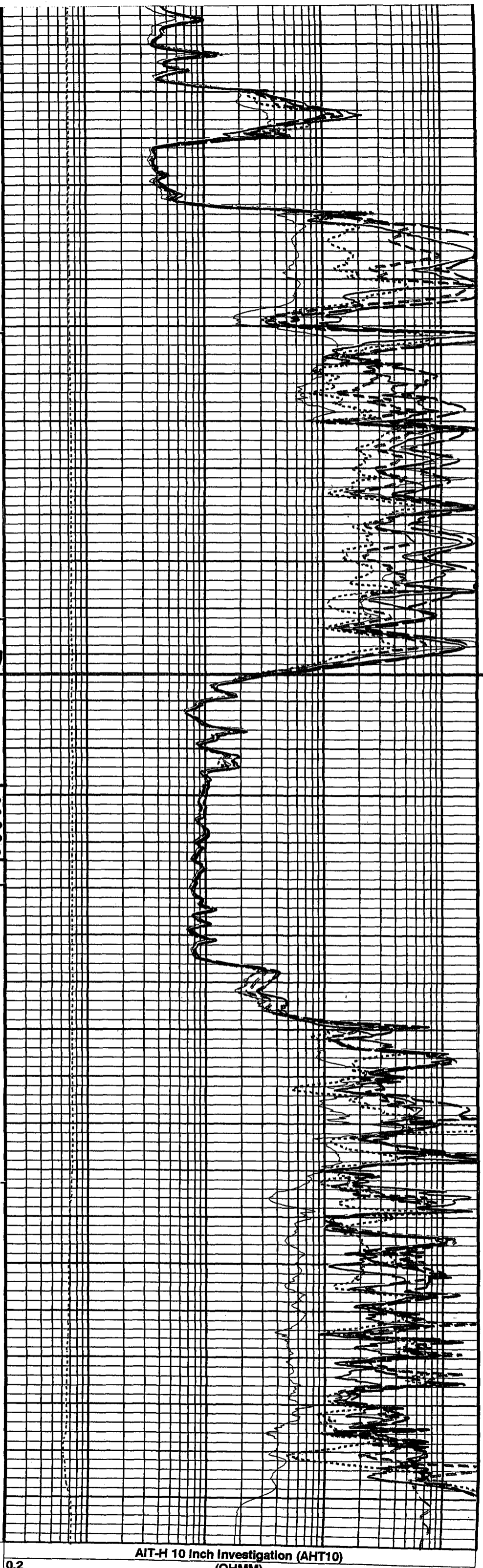
AVALON

-FR GR-
 -FR AIT-
 -TD-

7300

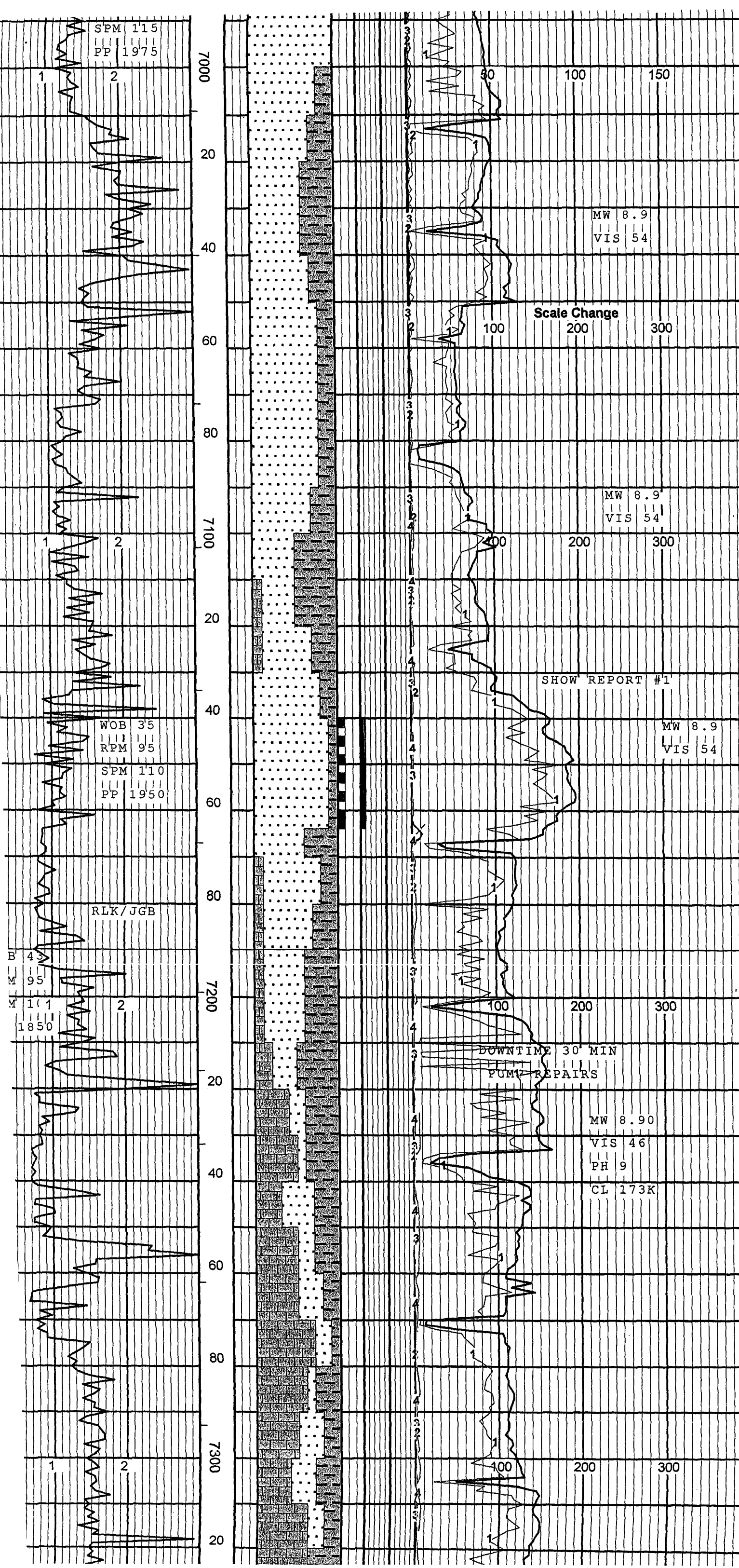
7400

7500



0.2

2000



SPM 115
PP 1975

WOB 35
RPM 95
SPM 110
PP 1950

RLK/JGB

B 43
M 95
M 111
1850

MW 8.9
VIS 54

Scale Change

MW 8.9
VIS 54

SHOW REPORT #1

MW 8.9
VIS 54

DOWNTIME 30 MIN
PUMP REPAIRS

MW 8.90
VIS 46
PH 9
CL 173K

SH: drk gry, gry, drk brn
, brn, sme blk, blk, frm-
mod hrd, rthy, slty,
carb in prt, vfn mica
thru out, tr pyr

SS: frstd, lt gry, clr, tn
vfn gr, sub rnd-rndd
sub ang, pred unconsol
tr lsly consol, wll
srted, prly cmtd, tr
calc mtrx, tr free
wht/gry clys, NO VIS
SHOW

SS: frstd, lt gry, clr, tn
vfn gr, sub rnd-sub
ang, lsly-mod consol
tr unconsol, wll srted
mod-wll cmtd, fria,
silic mtrx, tr calc in
prt

SS: frstd, lt gry, clr, tn
vfn gr, sub rnd-sub
ang, lsly consol-sme
unconsol, wll srted,
frly cmtd, tr-10%
dull ylw/gld fluor
tr slw mlkyylw wet
cut, fr amt fltng gr

SH: drk brn, brn, gry
blk, blk, sft-frm, sme
sli gmy, erty, sme lmy
sme vfnly mica

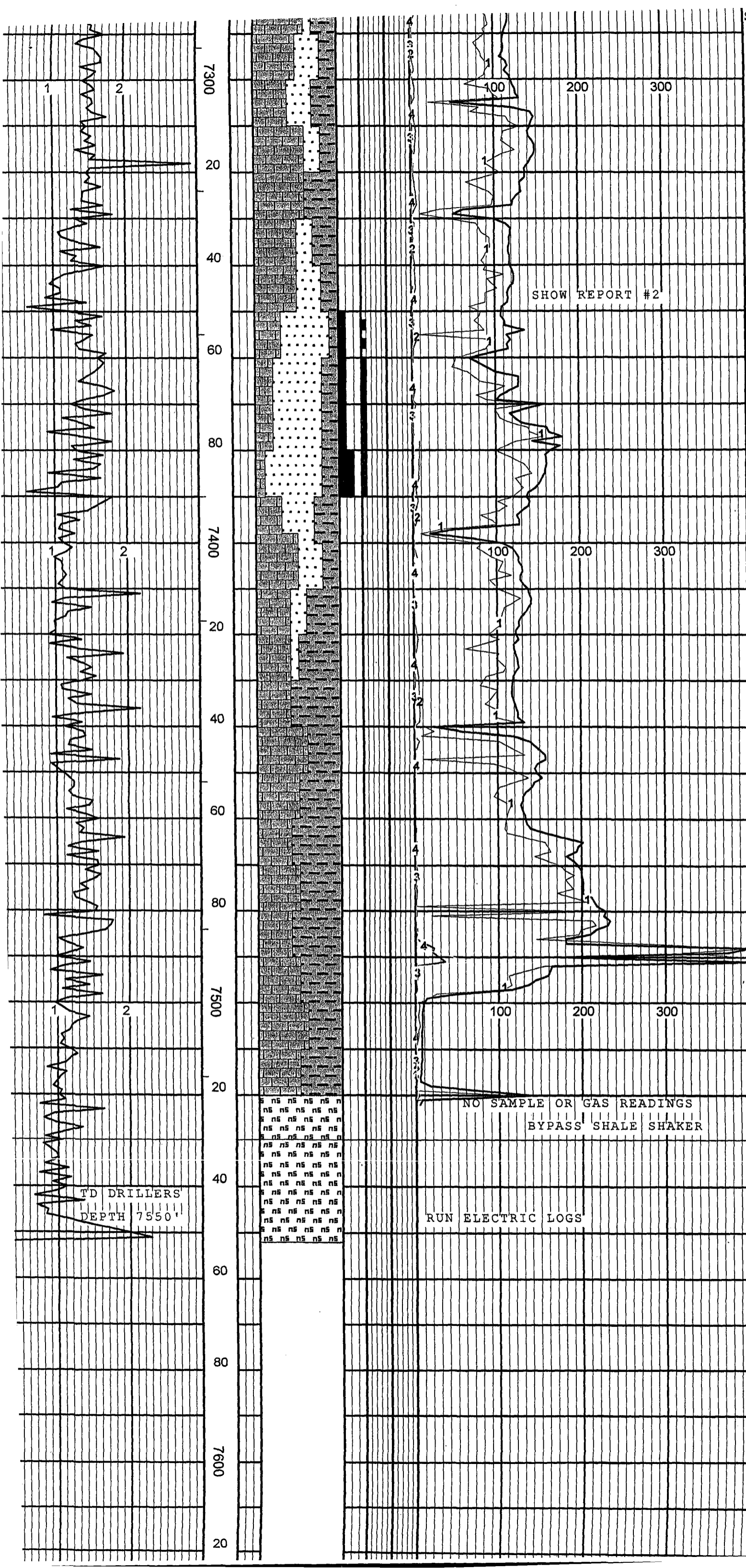
SS: clr, frsstd, tn, mlky
vfn gr, sme fn gr
consl/unconsl, sbrnd-
sbang, sme ang, calc/
silic mtrx, frly cmtd
sme well cmtd, argil
ip

LS: gry, brn, crm, vfn xln
frm-mod hrd, tr chky
mott, tr sucro, argil
ip, tr aren

SH: drk gry, drk brn, blk
blk, mod frm-sft, sme
lmy, sme slty, sme mica
tr carb

PLU-231

LS: lt brn, gry, lt gry,
sme brn, mott, vfn xln,
frm, cln, sm dns, sme



SH: drk gry, drk brn, blk
 blk, mod frm-sft, sme
 lmy, sme slty, sme mica
 tr carb

LS: lt brn, gry, lt gry,
 sme brn, mott, vfn xln,
 frm, cln, sm dns, sme
 chlky

SS: lt gry, gry, clr, vfn
 gr, occ fn gr, consl,
 fria, subrnd-rndd, calc
 cmt, prly-mod cmt, 10-
 20% pale yell fluor,
 tr slo mlky-yell wet
 cut, fltng grs

SS: clr, lt gry, gry, vfn
 gr, occ fn gr, lsly
 consl, calc cmt, subrnd
 rndd, prly cmt, tr fre
 wht clay, 20-30% pale
 yell fluor, tr-fr fst
 even pale-mlky yell
 wet cut

SH: blk, brn, drk gry, gry
 blk, sme flky, frm
 sme sft, slty, sme
 lmy, sme carb, fr amt
 wht clys thru out

LS: lt brn, gry, gry/brn
 mott, vfn xln, frm, dns
 sme chlky

SHOW REPORT #2

NO SAMPLE OR GAS READINGS
 BYPASS SHALE SHAKER

RUN ELECTRIC LOGS

TD DRILLERS
 DEPTH 7550'

PLU-231