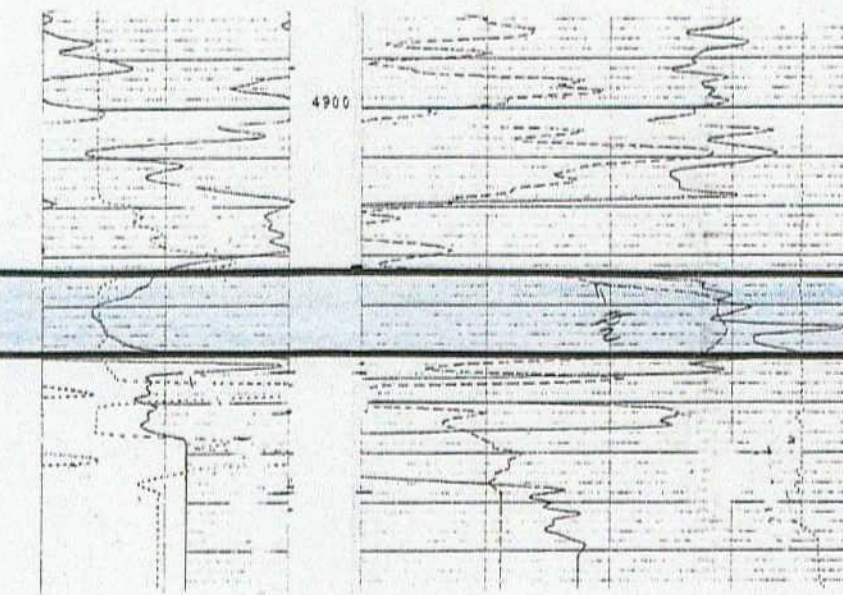

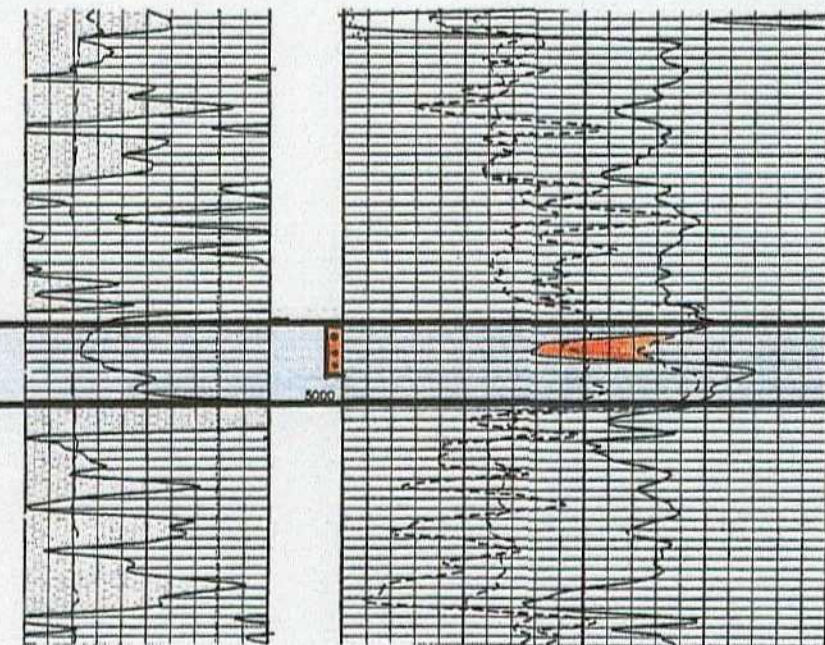


A


  
**YATES PETROLEUM CORPORATION**  
**RED ROCK 'NB' FED # 1**  
 1980' FSL & 660' FWL  
 SEC. 28-6S-25E  
 KB 3786'

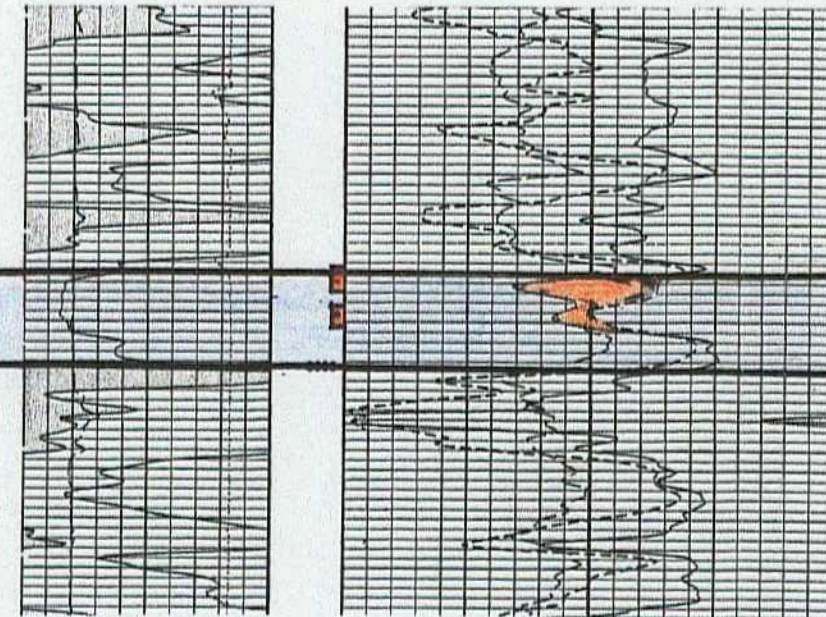


  
**YATES PETROLEUM CORPORATION**  
**POWERS OL DEEP FED # 6**  
 1980' FSL & 1980' FWL  
 SEC. 27-6S-25E  
 KB 3781'




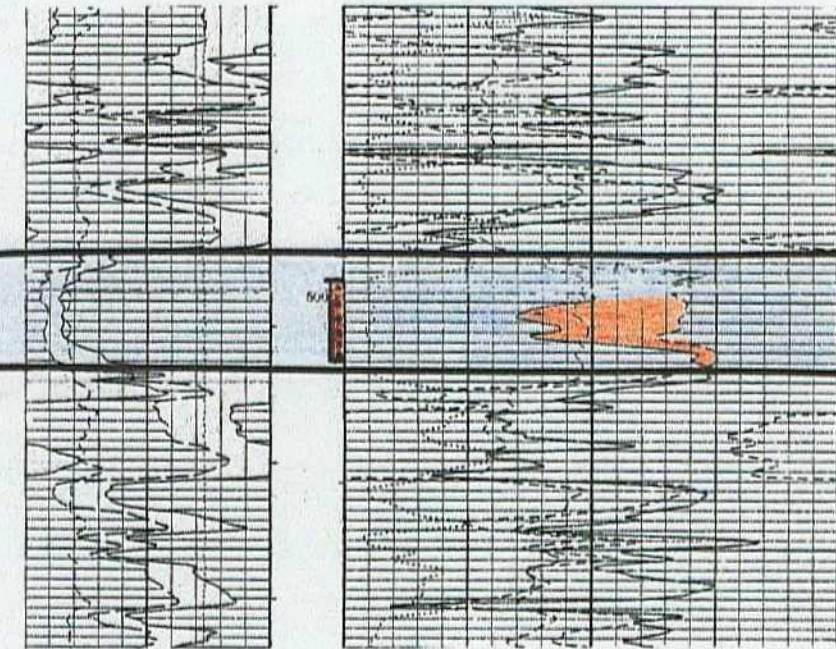
PERFS.: 4985 - 4995'  
 CUM OIL: 1441 BBLS  
 CUM GAS: 49,957 MMCF  
 CUM WATER: 983 BBLS  
 OCTOBER 2002 - JANUARY 2003

  
**YATES PETROLEUM CORPORATION**  
**GEORGE "QJ" FED DEEP COM # 2Y**  
 660' FSL & 710' FWL  
 SEC. 27-6S-25E  
 KB 3762'




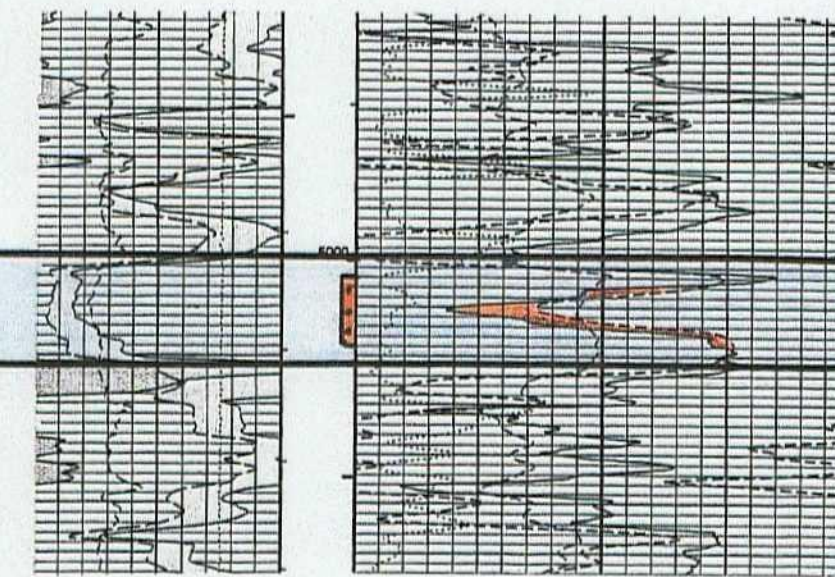
PERFS.: 4979 - 4984'; 4987 - 4991'  
 CUM OIL: 7806 BBLS  
 CUM GAS: 69,984 MMCF  
 CUM WATER: 36,309 BBLS  
 JUNE 2002 - JANUARY 2003

  
**YATES PETROLEUM CORPORATION**  
**GEORGE "QJ" FEDERAL # 10**  
 660' FSL & 1500' FWL  
 SEC. 26-6S-25E  
 KB 3759'



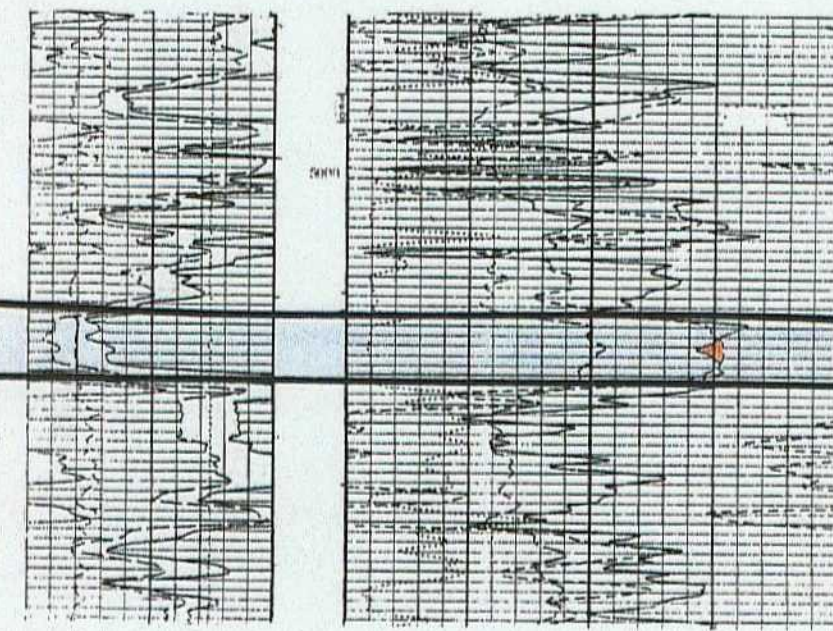
PERFS.: 4996 - 5012'  
 CUM OIL: 145,962 BBLS  
 CUM GAS: 115,515 MMCF  
 CUM WATER: 136 BBLS  
 AUGUST 2001 - JANUARY 2003

  
**YATES PETROLEUM CORPORATION**  
**GEORGE QJ FEDERAL COM # 9**  
 660' FNL & 1980' FWL  
 SEC. 35-6S-25E  
 KB 3752'

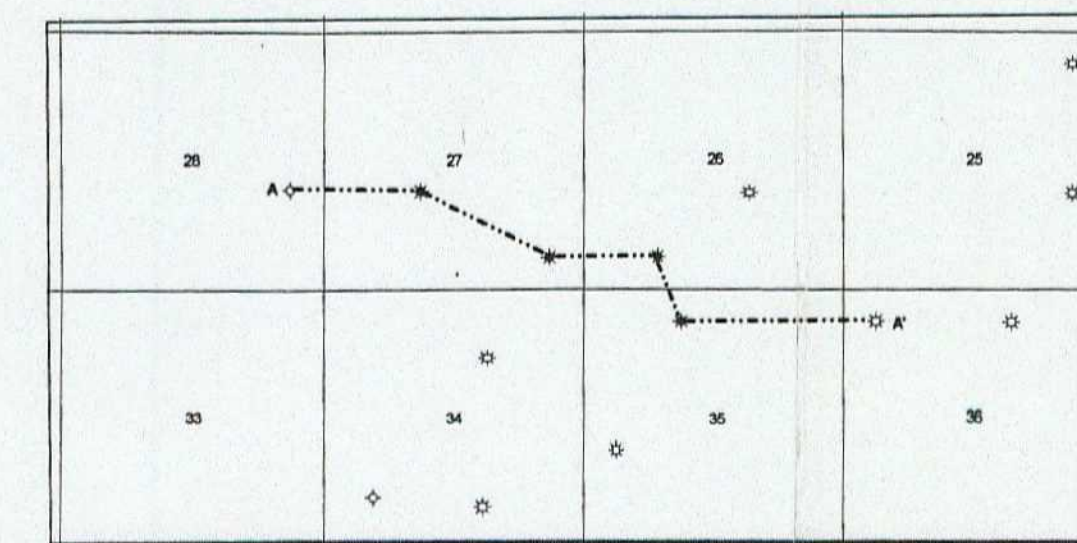



PERFS.: 5004 - 5018'  
 CUM OIL: 98,767 BBLS  
 CUM GAS: 141,947 MMCF  
 JANUARY 2002 - JANUARY 2003

  
**YATES PETROLEUM CORPORATION**  
**COTTONWOOD RANCH MK STATE # 6**  
 660' FNL & 660' FWL  
 SEC. 36-6S-25E  
 KB 3764'



A'




03-05-03  
**GEORGE "QJ" FEDERAL # 11**  
**STRATIGRAPHIC CROSS-SECTION A-A'**  
**CHAVES CO., NEW MEXICO**  
 GEO: T. MILLER

DOCKET # \_\_\_\_\_  
 EXHIBIT # \_\_\_\_\_

BEFORE THE OIL CONSERVATION DIVISION  
 Santa Fe, New Mexico  
 Case No. 13206 - Exhibit No. 7  
 Submitted by:  
 YATES PETROLEUM CORPORATION  
 Hearing Date: May 11, 2006