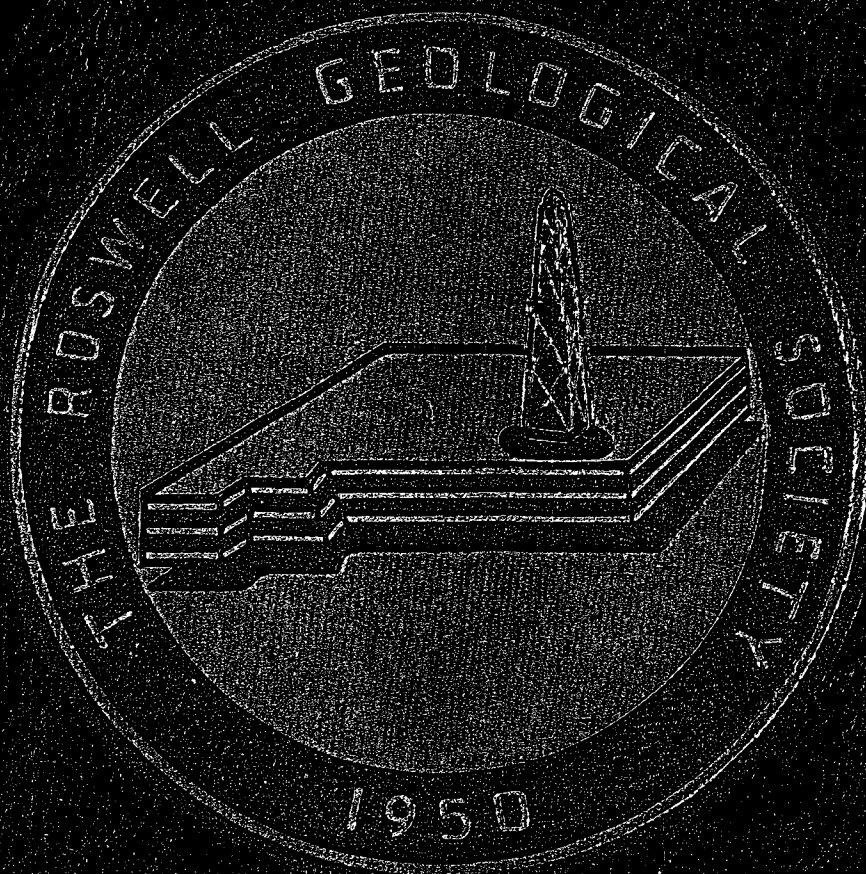


A SYMPOSIUM OF

# OIL & GAS FIELDS



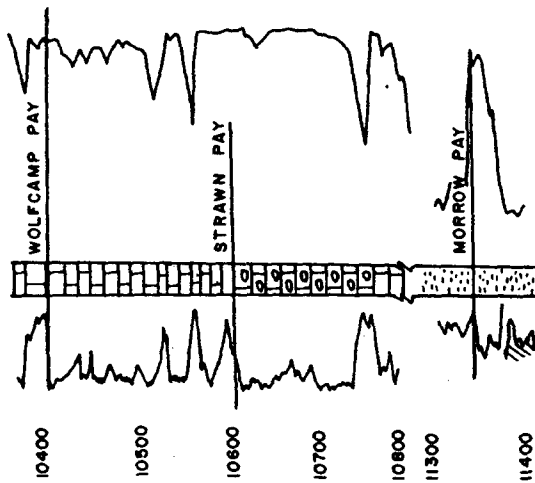
OF

## SOUTHEASTERN NEW MEXICO

1967

Samson Exhibit 1  
NMOCD Case Nos. 13492/13493  
Submitted 8/10/06

# TYPE LOG



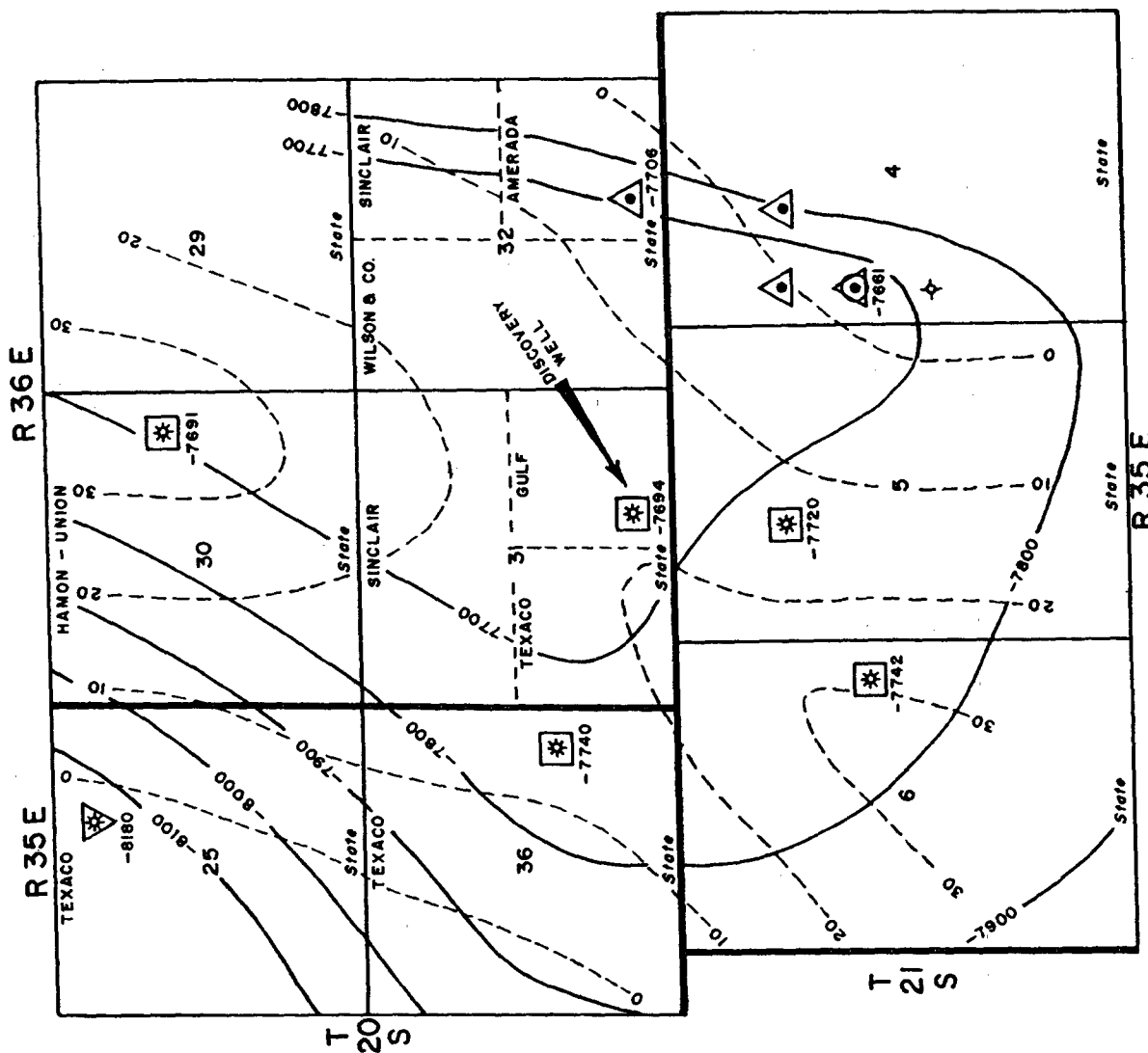
## LEGEND

- WOLFCAMP
- STRAWN
- ATOKA
- MORROW
- ISOPACH OF NET PAY

OSUDO FIELD  
LEA COUNTY NEW MEXICO  
STRUCTURE  
TOP MORROW SAND PAY  
Contour interval 100'

SCALE IN MILES  
0 1/2

SYMPOSIUM COMMITTEE SEPT. 1966



# ROSWELL GEOLOGICAL SOCIETY SYMPOSIUM

Author: Symposium Committee      Field Name: Osudo Morrow  
 Affiliation: Roswell Geological Society      Location: T-20 & 21-S, R-35 & 36-E  
 Date: September 15, 1966      County & State: Lea County, New Mexico

Discovery Well: British American Oil Producing Co. #1 North Wilson Deep Unit  
 SW/4 SE/4, Section 31, T-20-S, R-36-E

Exploration Method Leading to Discovery: Seismic

**Pay Zone:**

Formation Name: Morrow      Depth & Datum Discovery Well: 11350 (-7694)  
 Lithology Description: Sandstone, coarse, angular, poorly sorted, orthoquartzite

Approximate average pay: 20 gross 20 net      Productive Area 3840 acres

Type Trap: Stratigraphic trap. Pay consists of pinchout of several small sand bodies along west side of a strong positive structure

**Reservoir Data:**

5-10 % Porosity, \_\_\_\_\_ Md Permeability, 25-40 % Sw, \_\_\_\_\_ % So  
 Oil: 51.2 gravity  
 Gas: .620 gravity  
 Water: none Na+K, \_\_\_\_\_ Ca, \_\_\_\_\_ Mg, \_\_\_\_\_ Cl, \_\_\_\_\_ SO<sub>4</sub>, \_\_\_\_\_ CO<sub>2</sub>, or HCO<sub>3</sub>, \_\_\_\_\_ Fe  
 Specific Gravity \_\_\_\_\_ Resistivity \_\_\_\_\_ ohms @ \_\_\_\_\_ °F  
 Initial Field Pressure: 6800 psi @ -7550 datum Reservoir Temp. 165 °F  
 Type of Drive: Gas expansion

Normal Completion Practices: Set casing through pay, perforate, and complete natural. Some wells need stimulation.

Type completion: \_\_\_\_\_ Normal Well Spacing 640 Acres

Deepest Horizon Penetrated & Depth: Devonian 12,670 -9014

Other Producing Formations in Field: Wolfcamp, Strawn, Atoka, Yates

**Production Data:**

YEAR	TYPE	No. of wells @ yr. end		PRODUCTION OIL IN BARRELS GAS IN M M C F		YEAR	TYPE	No. of wells @ yr. end		PRODUCTION OIL IN BARRELS GAS IN M M C F	
		Prod.	S.I. or Abd.	ANNUAL	CUMULATIVE			Prod.	S.I. or Abd.	ANNUAL	CUMULATIVE
1964	OIL	1		112	112		OIL				
	GAS			6	6		GAS				
1965	OIL	1		16,900	17,012		OIL				
	GAS			1,644	1,650		GAS				
1966*	OIL			12,913	29,925		OIL				
	GAS			1,501	3,151		GAS				
	OIL						OIL				
	GAS						GAS				

\* Production to July 1, 1966