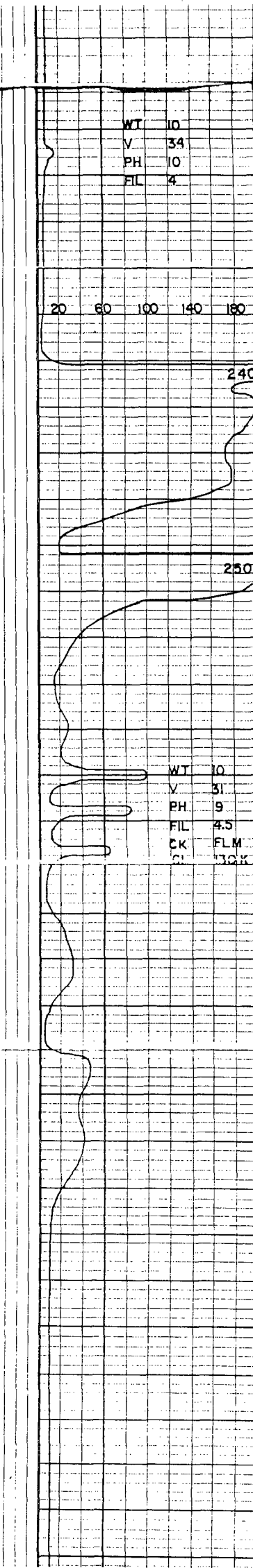
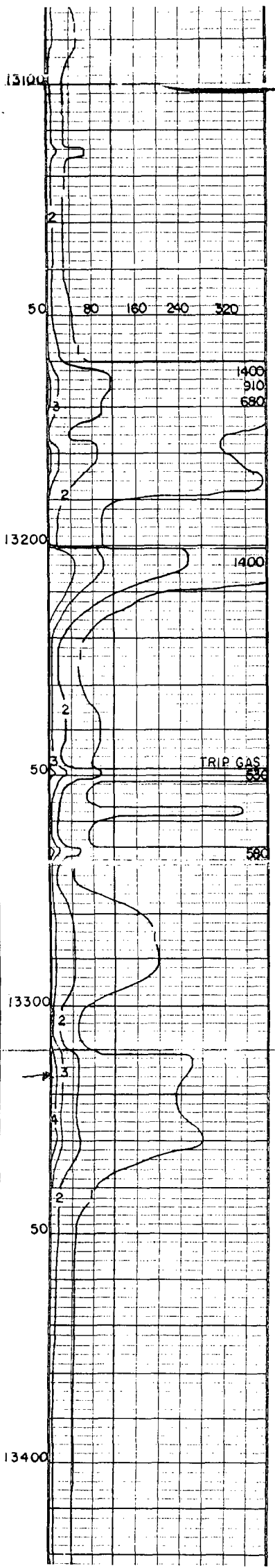
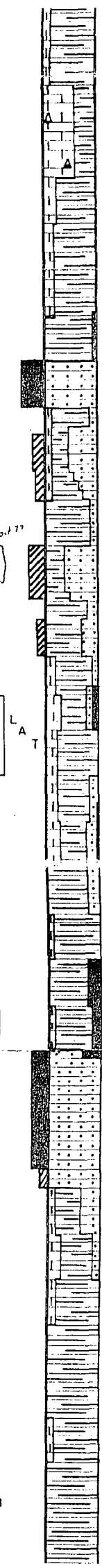
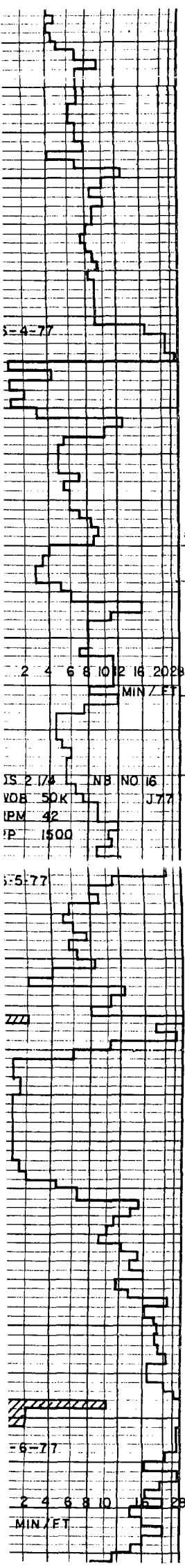


T/11



CHY:BRN TN TRANSL

WT 10
V 34
PH 10
FIL 4

LS:LT BRN GY DK GY
SM SL OOLITIC
TR FOSS

SH:LT BRN EARTHY SF
GY DK GY SL CALC
TRACE COAL BLK
FIRM

SS:CG MG UNCONSOLID
SUBANGL TO ANGL
POOR TO FAIR
SORT QTZ

SS:MG FG CONSOLID
FRAIBLE SL CALC
FAIR SORTING
GRN GRAINS GLAUC
SUBRDED TO SUB*
ANGL

SS:BECCING FINER GR
FRAIBLE SL CALC
FAIR SORT

SH:GY TO BRN SM
SLTY SM COAL SL
CALC SM WH

LS:WH TO TN SFT TO
FBM SM CHLKY VF
TO FX SL OOL SM
FOSS SM PYRITIC

WT 10
V 31
PH 9
FIL 4.5
CK FLM
CI 130K

SS:LT GY TO LT BRN
VF GRN DRTY HD
PR SRT SB ANG
SL GLAUC

SH:GY TO DK GY FRM
TO HD SM SFT SM
LIMEY

COAL:BLK DKHRN FRM
LS:CRM TO LT BRN
VF TO FX SM FOS
SM CHLKY SFT TO
HD SL PYRITIC
SNDY SM MOTT

SS:CLEAR UNCONSL
QTZ GRNS FN TO
M GRN WELL SRT
CLEAN SB ANG

SH:LT GY DK BY SFT
EARTHY SL CALC

LS:WH TN GY MX-FX
FIRM SM CHLKY

SH:GY SOFT EARTHY

LS:WH TO TN F TO
MX SFT TO FRM
DNS SM CHLKY

SH:GY TO DK GY SFT

IS 2 1/4 NB NO 16
VOB 50K J77
IPM 42
IP 1500

3-6-77
2 4 6 8 10 12 16 28
MIN/FT