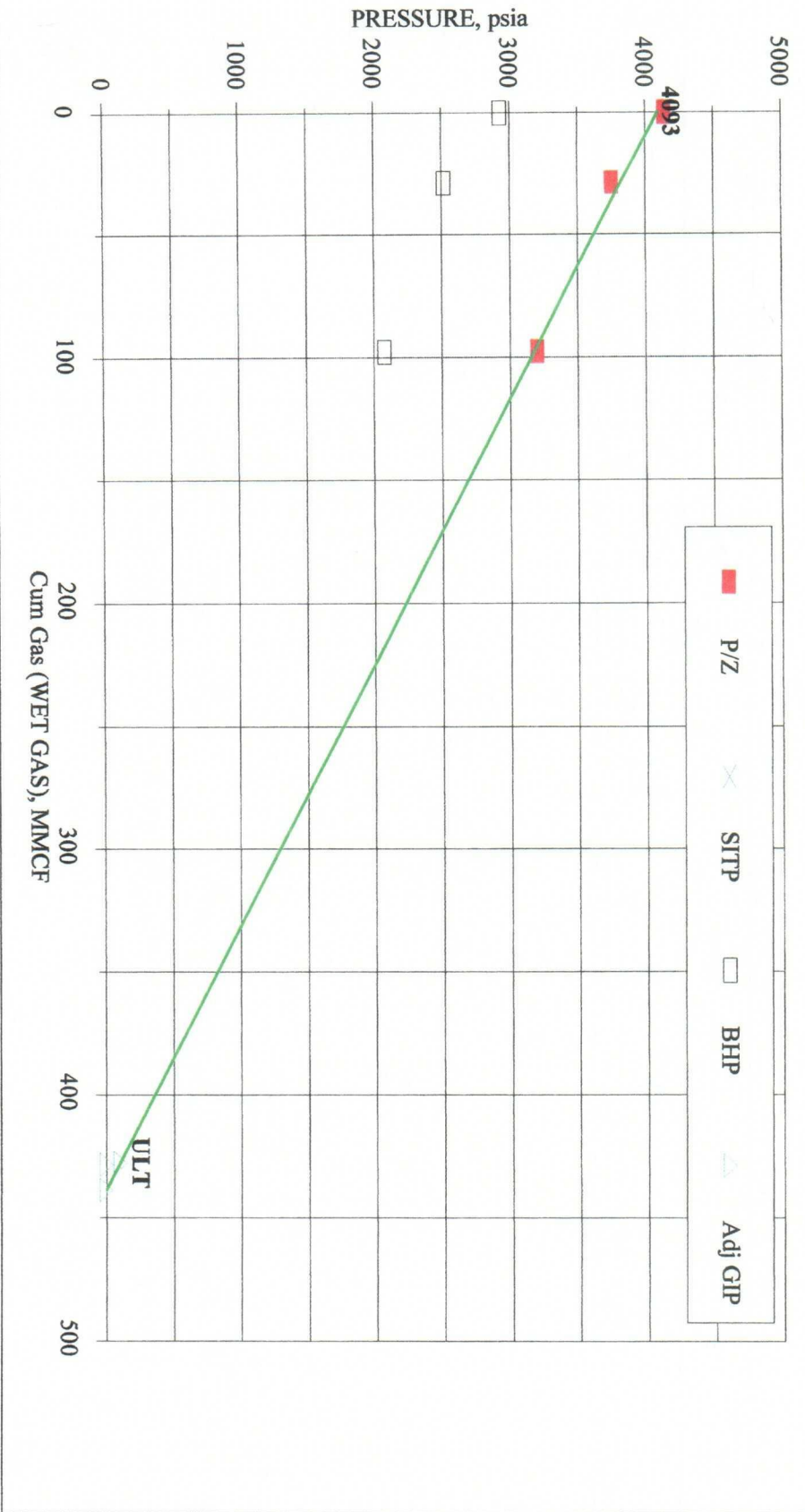


Mesa Grande 2-11
Happy Valley Bone Springs



Lease: Mesa Grande 2-11

PZWELL v1.42 9/8/106

Fld/Zn: Happy Valley Bone Springs

Metric to Imperial Conversion

Legal: W/2 W/2 Sec 11-22S-26E

M3/E3M3: 0 0.0 =bbl/mm

Co/St: Eddy, NM

Sp Grav: 0 ERR =API

Remarks: 9/06/06 SI test

Depth,m: 0 0 =ft

Remarks: also run AOF

Temp,C: 0 32 =BHT,F

RESERVIOR DATA	VOLUMETRICS & Adj. P/Z	RESULTS	Straight
Depth= 6211	h % Por %Sw % NaCl	from curve fit	Adjust Line
BHP,abn= 100	30 6.3 22 3	BHP/Z-i=	4090 4093
BHT(or Grad or-1)= 1.15	Cr (1 to est)= 1.0E+00	GIP,mm,wet=	428 439
BHT,used= 145	correlation= 5.9E-06	GIP,mm,dry=	399 408
GAS PROPERTIES		ULT,mm,wet=	418 428
Sales Gas Gravity= 0.7	CONDENSATE DATA	ULT,mm,dry=	389 398
%N2= 0	Cond API= 43.4	r2=	0.982 0.983
%CO2= 0	b/MM,init= 112.00	R.E.=	0.98 0.97
%H2S= 0	Avg Yield= -1	mcf/naf=	507 506
Pressures... Imperial or Metric	(-1=use initial,-2=correlation)	Area,ac=	27 28
I or M= I	correlation= 32.34	Radius,ft=	617 625
	(avg b/mm over life)		

data	days	SI	Pressure	1=sitp 2=bhp 3=P/Z	Cum b/mm mmcf (or -1)	Cum,bbl (or -1)	BHP psig	BHP/Z psig	Wet Gas Z Cum,mm
1 04/17/06	0	2931	2	0	-1	0	2931	4142	0.708 0
1 06/20/06	0	2517	2	27	-1	-1	2517	3753	0.671 29
1 09/06/06	0	2076	2	91	-1	-1	2076	3201	0.649 98