

DISTRICT I  
1625 N. French Dr., Hobbs, NM 88240

DISTRICT II  
P.O. Drawer DD, Artesia, NM 88211-0719

DISTRICT III  
1000 Rio Brazos Rd., Aztec, NM 87410

DISTRICT IV  
2040 South Pacheco, Santa Fe, NM 87505

State of New Mexico  
Geology, Minerals & Natural Resources Department

Form C-102  
Revised August 15, 2000  
Submit to Appropriate District Office  
State Lease - 4 Copies  
Fee Lease - 3 Copies

OIL CONSERVATION DIVISION  
2040 South Pacheco  
Santa Fe, NM 87505

☐ AMENDED REPORT

WELL LOCATION AND ACREAGE DEDICATION PLAT

API Number	Pool Code	Pool Name
		UNDES. EAGLE CREEK-WOLFCAMP
Property Code	Property Name	Well Number
	1724 OSBOURN	101
OGRID No.	Operator Name	Elevation
218885	LCX ENERGY, LLC	3720

Surface Location

UL or lot No.	Section	Township	Range	Lot Idn	Feet from the	North/South line	Feet from the	East/West line	County
B	10	17 S	24 E		200	NORTH	1880	EAST	EDDY

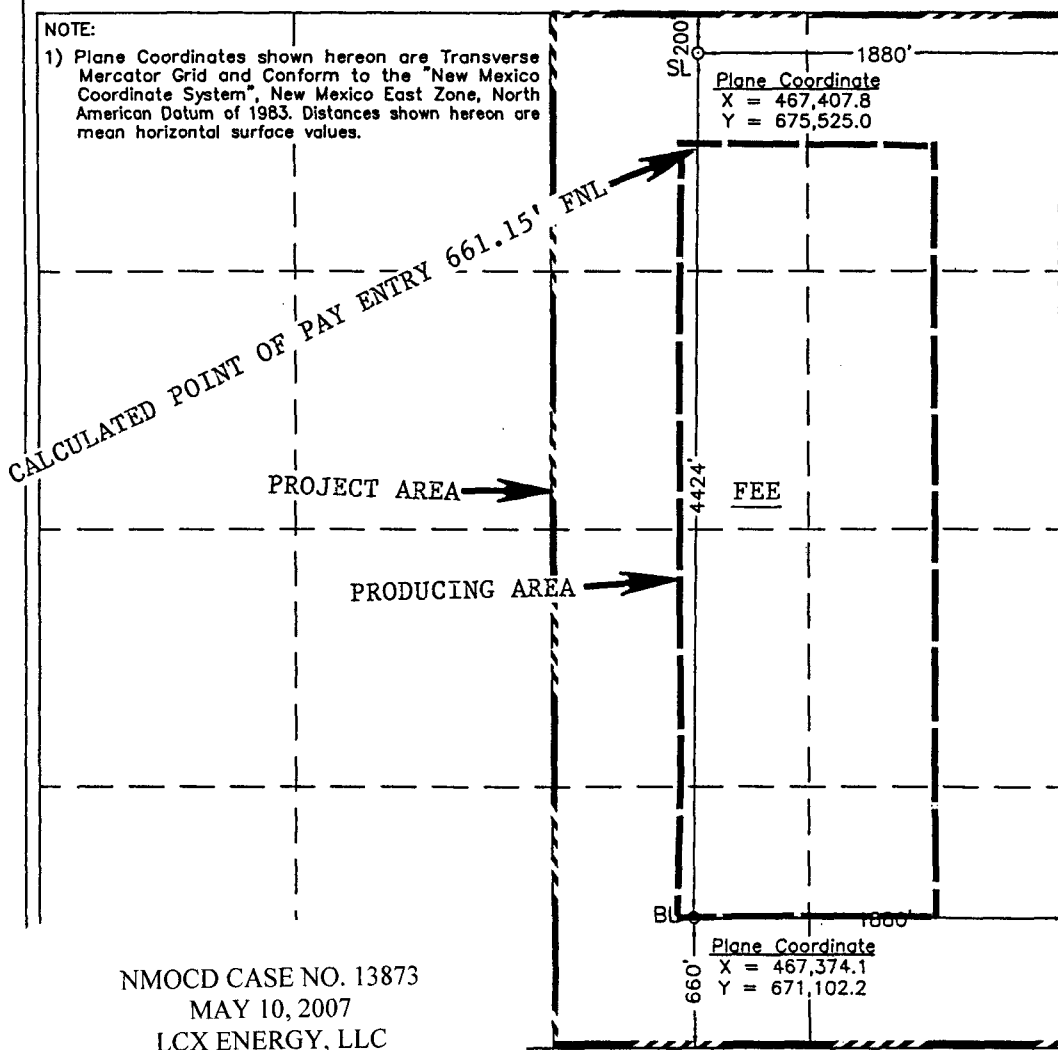
Bottom Hole Location If Different From Surface

UL or lot No.	Section	Township	Range	Lot Idn	Feet from the	North/South line	Feet from the	East/West line	County
O	10	17 S	24 E		660	SOUTH	1880	EAST	EDDY
Dedicated Acres	Joint or Infill	Consolidation Code	Order No.						
320									

NO ALLOWABLE WILL BE ASSIGNED TO THIS COMPLETION UNTIL ALL INTERESTS HAVE BEEN CONSOLIDATED OR A NON-STANDARD UNIT HAS BEEN APPROVED BY THE DIVISION

NOTE:

1) Plane Coordinates shown hereon are Transverse Mercator Grid and Conform to the "New Mexico Coordinate System", New Mexico East Zone, North American Datum of 1983. Distances shown hereon are mean horizontal surface values.



OPERATOR CERTIFICATION

I hereby certify the the information contained herein is true and complete to the best of my knowledge and belief.

*Joe T. Janica*  
Signature  
Joe T. JANICA 01/12/07  
Printed Name  
Agent  
Title  
01/12/07  
Date

SURVEYOR CERTIFICATION

I hereby certify that the well location shown on this plat was plotted from field notes of actual surveys made by me or under my supervision and that the same is true and correct to the best of my belief.

December 12, 2005  
Date Surveyed  
Signature & Seal of Professional Surveyor  
W.O. Num. 2005-0649  
Certificate No. MACON McDONALD 12185

NMOCD CASE NO. 13873  
MAY 10, 2007  
LCX ENERGY, LLC  
EXHIBIT NO. 1