

KELLAHIN & KELLAHIN
Attorney at Law

W. THOMAS KELLAHIN
706 GONZALES ROAD
SANTA FE, NEW MEXICO 87501

TELEPHONE 505-982-4285
FACSIMILE 505-982-0047
TKELLAHIN@COMCAST.NET

August 20, 2007

HAND DELIVERED

Mr. Mark Fesmire, P.E., Director
Oil Conservation Division
1220 South Saint Francis Drive
Santa Fe, New Mexico 87505

RECEIVED
AUG 20 PM 4 24

~~13787~~
Case 13888

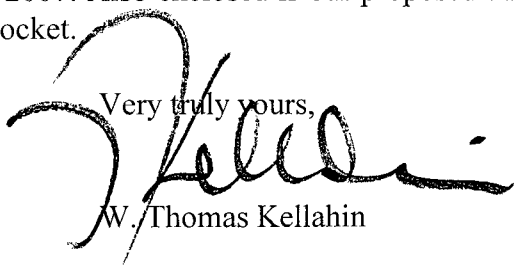
Re: **Burlington's Motion to Reopen and Amend Well Locations:**

Case 13888: Application of Burlington Resources Oil & Gas Company LP for approval of a Pilot Infill Well Project within the San Juan 27-5 Unit including directional wellbores and exceptions to the well density requirements of the Special Rules and Regulations for the Blanco-Mesaverde Gas Pool and the Basin-Dakota Gas Pool, Rio Arriba County, New Mexico

Dear Mr. Fesmire:

On behalf of Burlington Resources Oil & Gas Company LP, please find enclosed motion to reopen and amend well locations in the referenced application that was original heard on March 15, 2007 by Examiner Jones. We request that this matter be set for hearing on the Examiner's docket now scheduled for September 20, 2007. Also enclosed is our proposed advertisement of this case for the NMOCD docket.

Very truly yours,


W. Thomas Kellahin

cc: Burlington Resources Oil & Gas Company LP
Attn: Alan Alexander

CASE 13888: (Reopened and Amended) Applicant has filed a motion to reopen and amend well location for this case previously heard by the Division on March 15, 2007 that involved the application of Burlington Resources Oil & Gas Company LP for approval of a Pilot Infill Well Project within the San Juan 27-5 Unit, Rio Arriba County, New Mexico. Applicant seeks an order approving a pilot infill well project in Section 8, T27N R5W, including directional wellbores and exceptions from Rule I. B of the Special Rules and Regulations for the Blanco-Mesaverde Gas Pool and Rule II B. of the Special Rules and Regulations of the Basin-Dakota Gas Pool whereby 15 new producing and 1 pressure observation wells may be drilled within Section 8, Township 27 North Range 5 West to determine proper well density and well locations requirements for Mesaverde and Dakota wells with this Unit, Rio Arriba County, New Mexico. The following is the revised surface and subsurface locations to each new wellbores:

Well Name	New Well	Footage_Surface	Footage_bhl	Twin Well Name
SJ27_5	910	1586' FSL & 1745' FEL	2710' FSL & 2350' FEL	New5wellpad
SJ 27_5	912	1635' FSL & 1733' FEL	2610' FSL & 1150' FEL	:New 5well pad
SJ 27-5	914	1486' FSL & 1768' FEL	1125' FSL & 2410' FEL	New 5 well pad
SJ 27_5	915	1437' FSL & 1780' FEL	1115' FSL & 1050' FEL	New5 well pad
SJ 27_5	911	1536' FSL & 1757' FEL		New 5 well pad - vertical
SJ 27 5	908	1852' FNL & 984' FWL	2605' FSL & 1590' FWL	San Juan 27-5 Unit 112
SJ 275	916	2541' FNL & 2452' FWL	2655' FSL & 2300' FWL	'San Juan 27-5 Unit 112F
SJ 27_5	902	591' FNL & 1614' FWL	920' FNL & 2325' FWL	San Juan 27-5 Unit 112M
SJ 27_5	901	1646' FNL & 1146' FWL	960' FNL & 1040' FWL	San Juan 27-5 Unit 150R
SJ 27_5	904	1794' FNL & 1193' FWL	2310' FNL & 890' FWL	:San Juan 27-5 Unit 150R
SJ 27_5	905	1695' FNL & 1161' FWL	1635' FNL & 1665' FWL	San Juan 27-5 Unit 150R
SJ 27_5	909	886' FNL & 1892' FWL	1920' FSL & 2280' FWL	San Juan 27-5 Unit 63
SJ 27_5	913	853' FSL & 1846' FWL	1135' FSL & 1605' FWL	San Juan 27-5 Unit 63
SJ 27_5	903	1595' FNL & 1860' FEL	925' FNL & 1665' FEL	San Juan 27-5 Unit 70
SJ 27 5	906	:1699' FNL & 1865' FEL	2280' FNL & 1705' FEL	San Juan 27-5 Unit 70
SJ 27_5	907	:1699' FNL & 1865' FEL	1675' FNL & 1015' FEL	'San Juan 27-5 Unit 70

Note: # 916 well is a pressure observation well

These wells are located approximately 8 miles south of the Gobernador, New Mexico.

RECEIVED
 2007 AUG 20 PM 4 42

STATE OF NEW MEXICO
ENERGY, MINERALS AND NATURAL RESOURCES DEPARTMENT
OIL CONSERVATION DIVISION

RECEIVED
2007 AUG 20 PM

CASE NO. 13888

**Application of Burlington Resources Oil & Gas Company LP
for approval of a Pilot Infill Well Project within the San Juan
27-5 Unit including directional wellbores and exceptions to the
well density requirements of the Special Rules and Regulations
for the Blanco-Mesaverde Gas Pool and the Basin-Dakota Gas Pool,
Rio Arriba County, New Mexico**

MOTION TO REOPEN AND AMEND

Burlington Resources Oil Gas Company LP ("Burlington") by its attorneys, Kellahin & Kellahin, moves that the New Mexico Oil Conservation Division ("Division") reopen Case 13888 and allow Burlington to amend well locations for a Pilot Infill Well Project within the San Juan 27-5 Unit, Rio Arriba County, New Mexico.

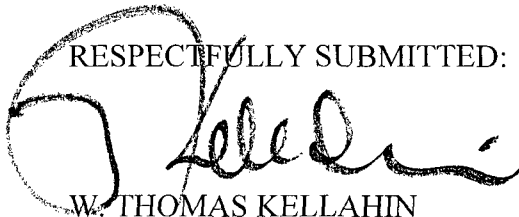
In support of this motion, Burlington state:

- (1) Burlington is the current operator of the San Juan 27-5 Unit that includes, among other acreage, all of Section 8, T27N, R5W, Rio Arriba County, New Mexico. Section 8, T27N, R5W was selected by Burlington as the proposed Pilot Project Area that currently contains 7 producing wells.
- (2) At a hearing held by the Division on March 15, 2007, Burlington sought an order approving a pilot infill well project in Section 8, T27N R5W, including directional wellbores and exceptions from Rule I. B of the Special Rules and Regulations for the Blanco-Mesaverde Gas Pool and Rule II. B. of the Special Rules and Regulations of the Basin-Dakota Gas Pool whereby 15 new producing and 2 pressure observation wells (revised to 1 pressure observation well) may be drilled within Section 8, Township 27 North Range 5 West to determine proper well density and well locations requirements for Mesaverde and Dakota wells with this Unit, Rio Arriba County, New Mexico. **The original proposed additional well locations as set forth on Exhibit "A" attached.**

- (3) After the March 15, 2007, hearing, Burlington discovered that certain of the requested well locations were adversely affected by buried pipelines, archaeology and other obstructions not apparent at the time of the hearing.
- (4) Burlington has determined that the affected wells can be relocated without adversely affecting the pilot project. **The requested amended locations are set forth on Exhibits "B" and "C" attached.**
- (5) Approval of a Pilot Project and the amended locations will afford an opportunity to:
 - a. Determine the optimum well density for both the Mesaverde and the Dakota formations within the San Juan 27-5 Unit
 - b. Confirm the economic viability for increasing well densities
 - c. Validate the reservoir simulation and geologic studies that were used for the preliminary modeling for this project
- (6) Notice of this motion and the requested hearing will be sent to the Mesaverde and Dakota interest owners in the San Juan 27-5 Unit.
- (7) Approval of this application is in the best interests of conservation, the prevention of waste and the protection of correlative rights.

WHEREFORE, Burlington requests that this motion be set for hearing before an Examiner of the Oil Conservation Division on September 20, 2007 and after notice and hearing as required by law, the Division enter its order approving this application as amended.

RESPECTFULLY SUBMITTED:



W. THOMAS KELLAHIN
KELLAHIN & KELLAHIN
706 Gonzales Road
Santa Fe, New Mexico 87501
(505) 982-4285

Exhibit "A"

Original Well Locations

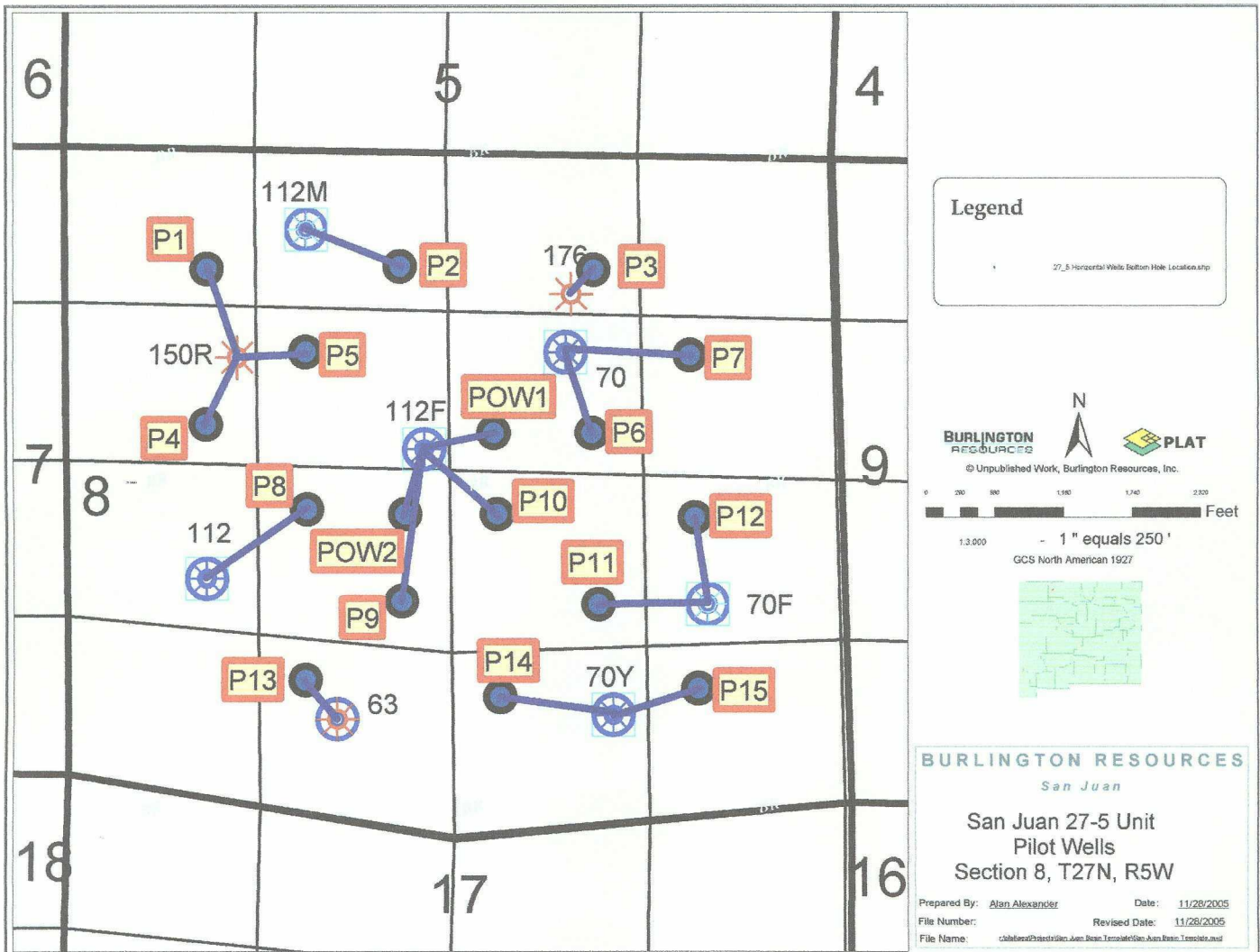


Exhibit "B"

Revised Well Locations

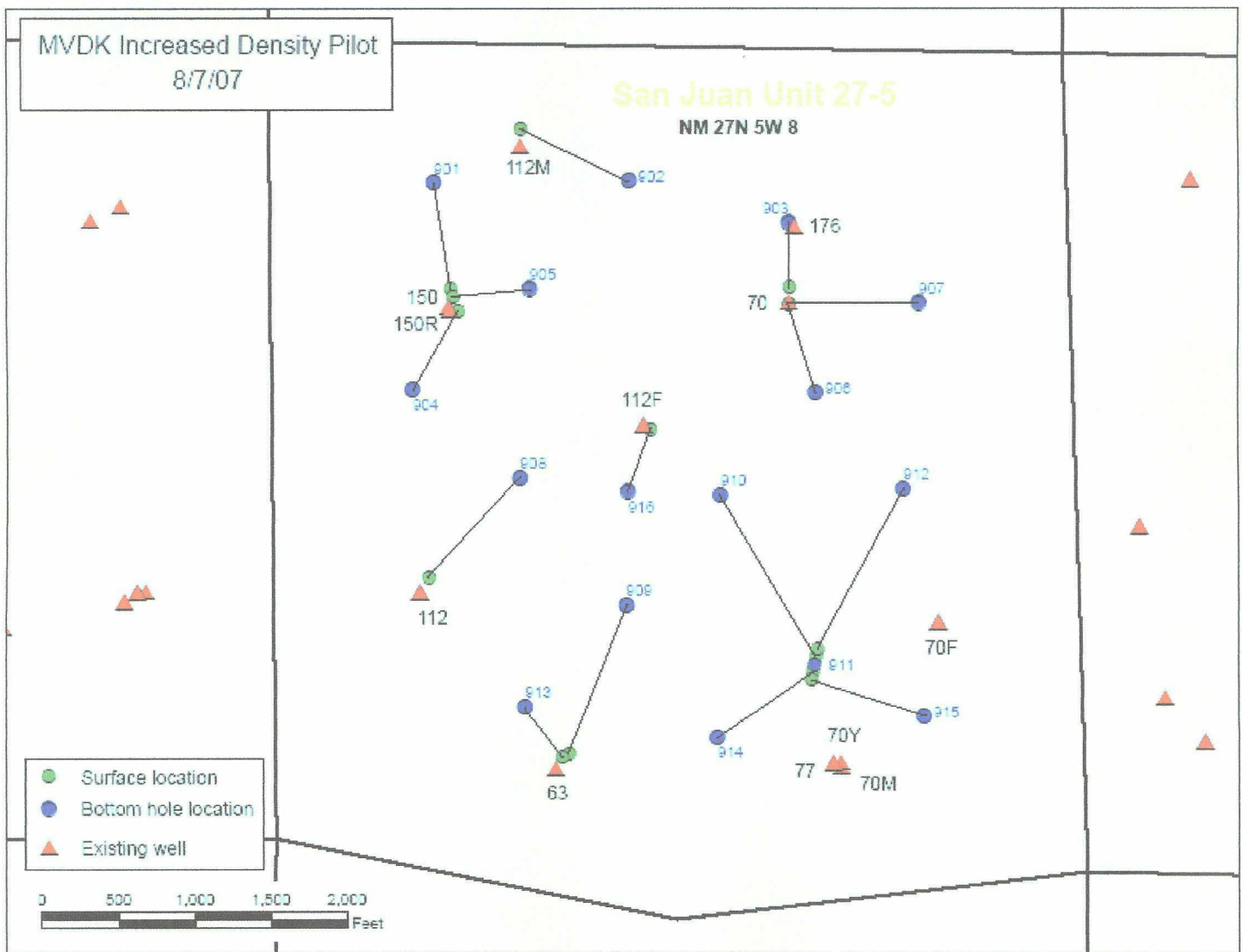


Exhibit "C"
Revised Well Locations Spread Sheet

[illegible]