

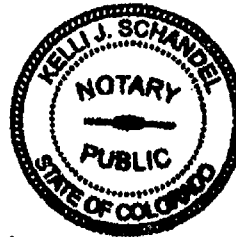


Dan Spencers  
Dan Spencers

SUBSCRIBED AND SWORN TO before me this 18<sup>th</sup> day of February, 2008 by Dan Spencers.

My Commission Expires: 8/23/2009

Kelli J. Schandel  
Notary Public



My Commission Expires Aug. 23, 2009

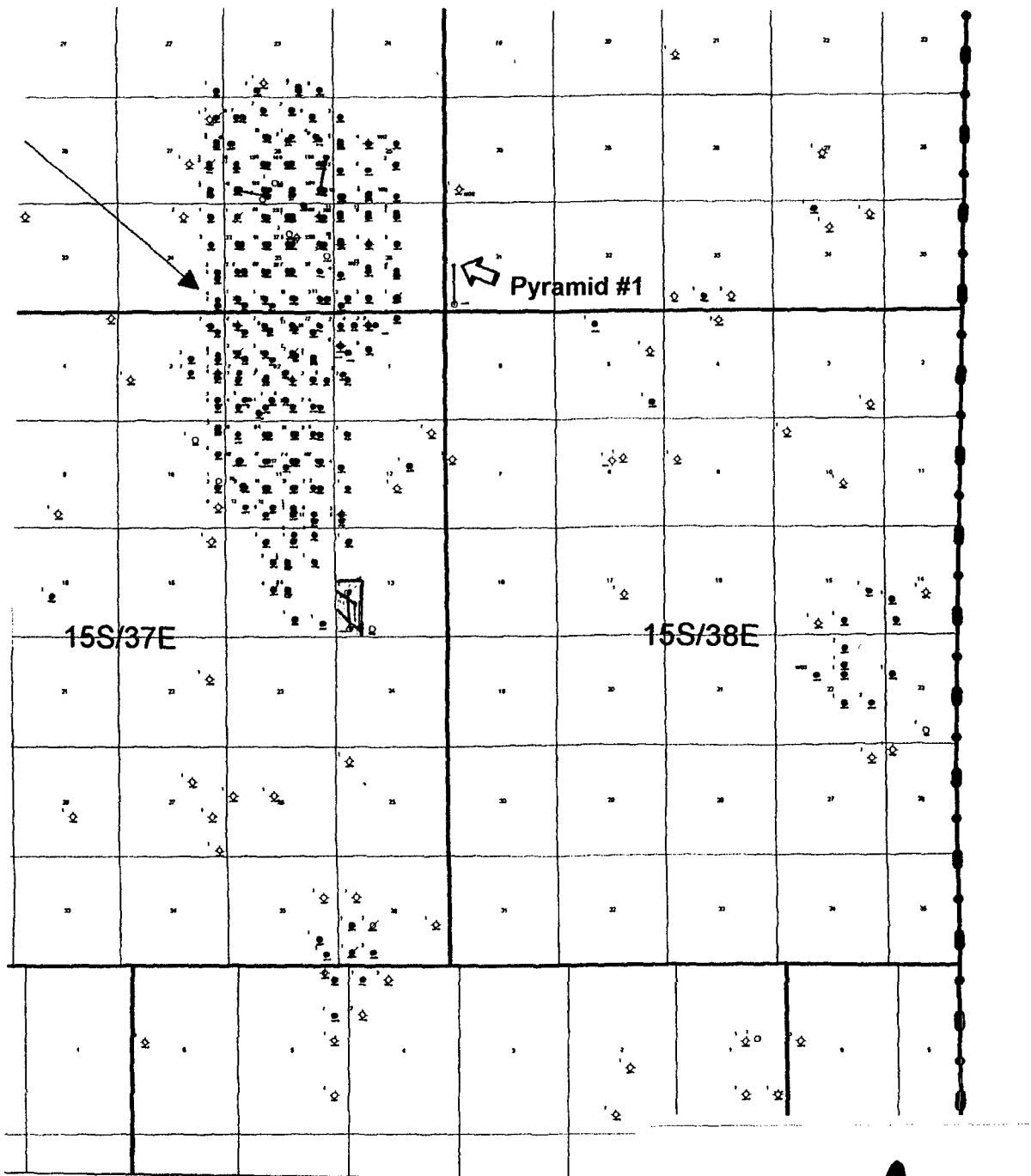


EXHIBIT **A**

ft

<b><i>Cimarex Energy Co.</i></b>		
<b>Caudill / Denton Area Base Map Northern Lea Co, NM</b>		
<b>Author:</b> Dave Rittersbacher		<b>Date:</b> 17 May, 2007
	<b>Scale:</b> 1"=8000'	



Pyramid 80 acre unit

Pyramid #1  
Lateral currently producing

Harvard 6 Fee #2  
Lateral currently producing

Humboldt 6 State  
COM #1

Antero 12 Fee 5  
proposed 80 acre unit

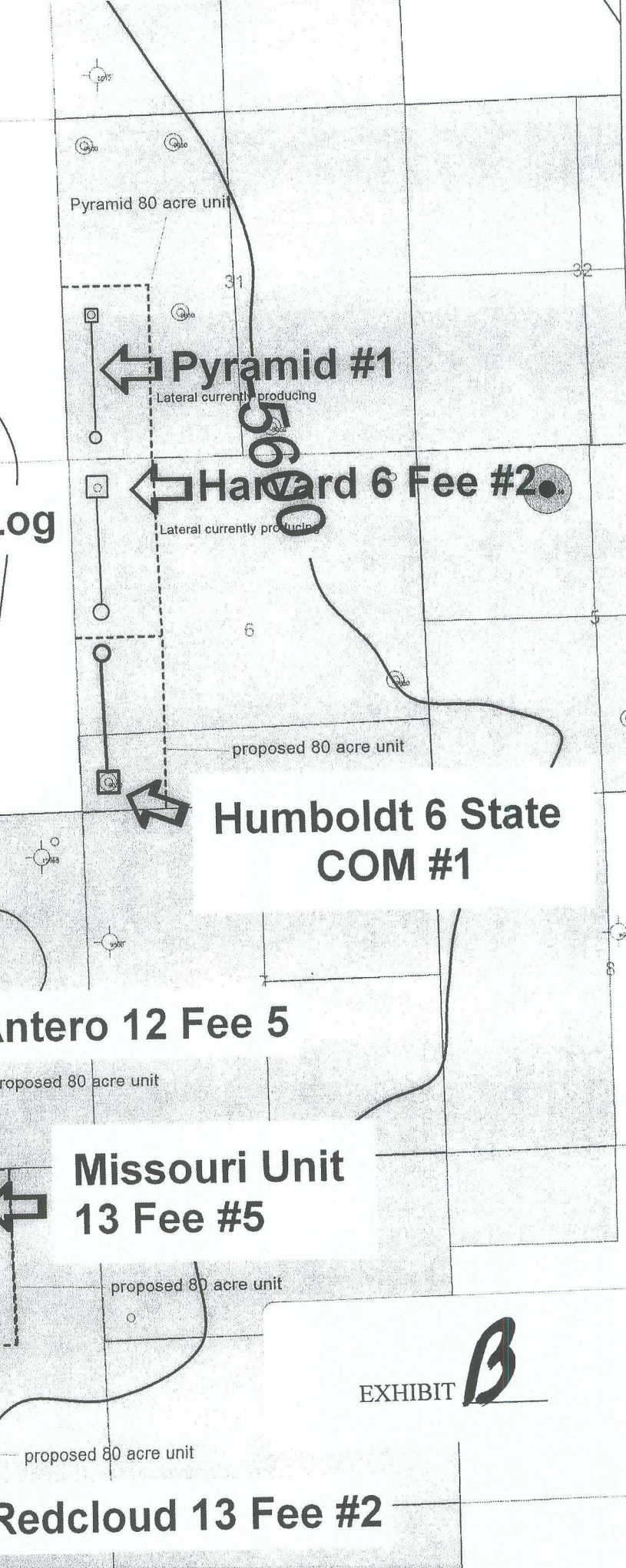
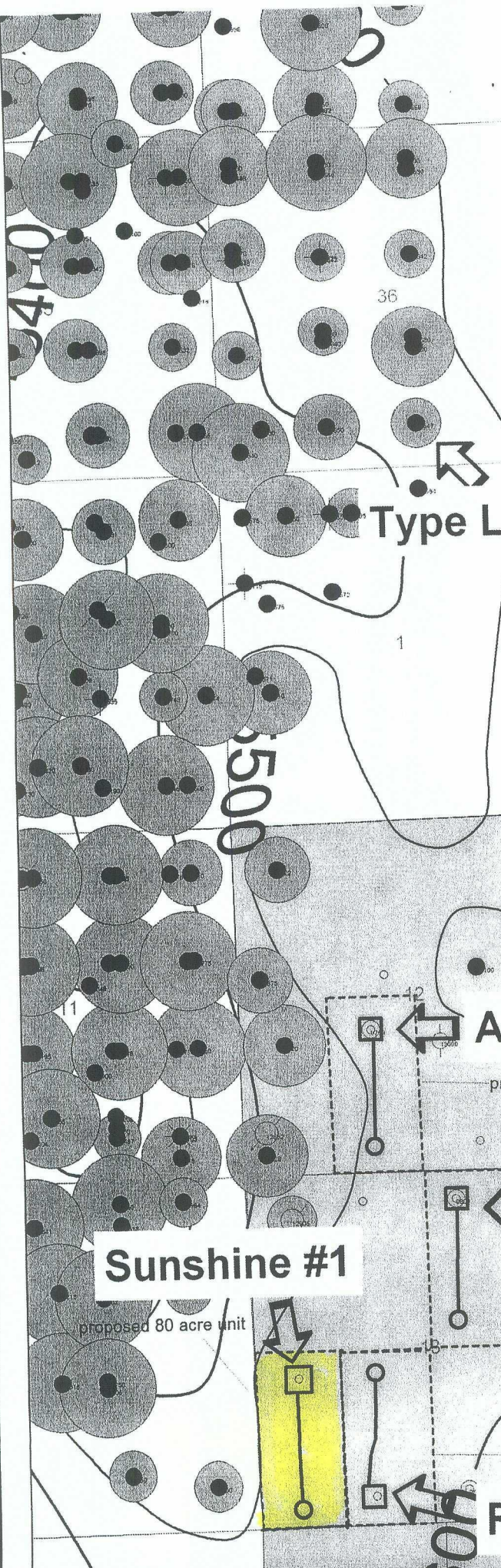
Missouri Unit  
13 Fee #5  
proposed 80 acre unit

Sunshine #1  
proposed 80 acre unit

Redcloud 13 Fee #2  
proposed 80 acre unit

Type Log

EXHIBIT **B**





-5400

-5400

-5500

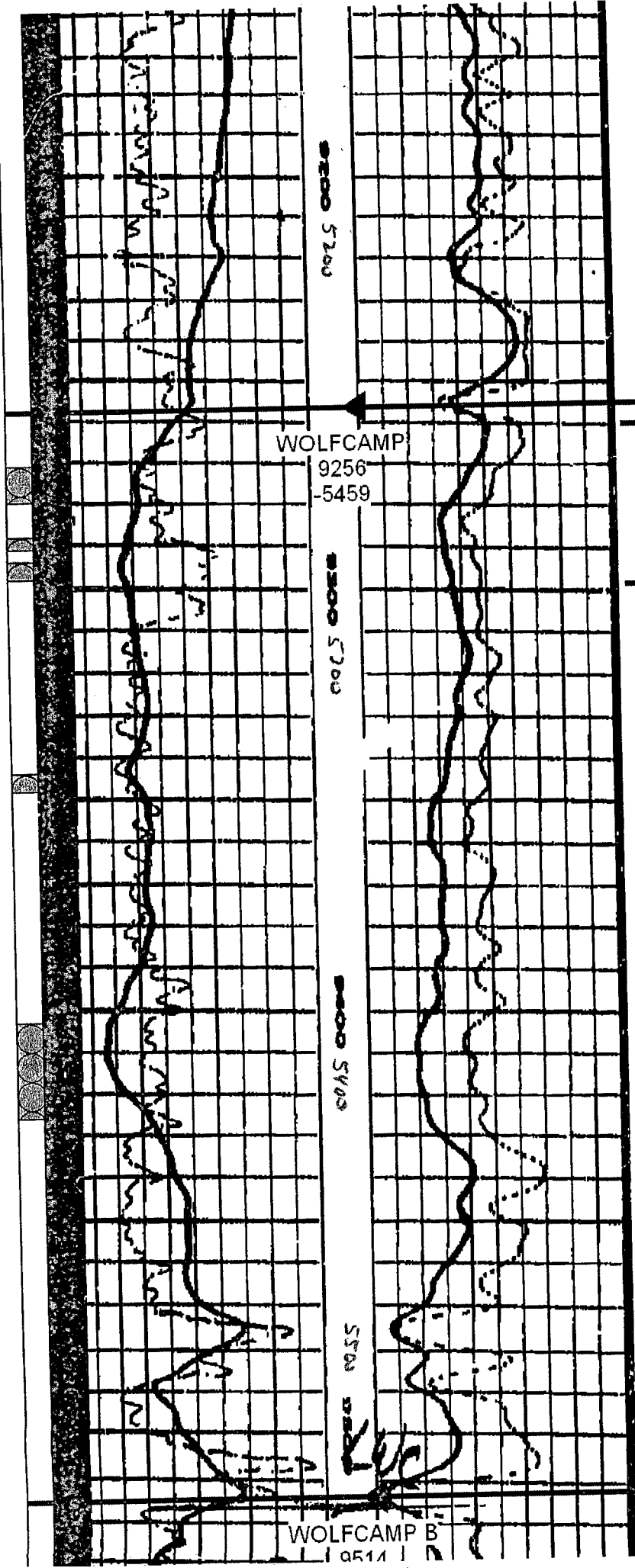
-5500

-5600

-5600

-5700

-5700



Pyramid #1  
Horizontal Target  
Zone

**C**

EXHIBIT

WOLFCAMP

9256  
-5459

WOLFCAMP B

9514

5200

5300

5400

5500



# Cimarex Energy Co., Inc.

Lea County (NAD 83)

Sunshine #1

Sunshine #1

Lateral #1

Plan: Plan #1

## Standard Survey Report

05 October, 2006

EXHIBIT D

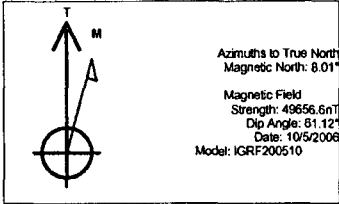




Project: Lea County (NAD 83)  
 Site: Sunshine #1  
 Well: Sunshine #1  
 Wellbore: Lateral #1  
 Plan: Plan #1 (Sunshine #1/Lateral #1)

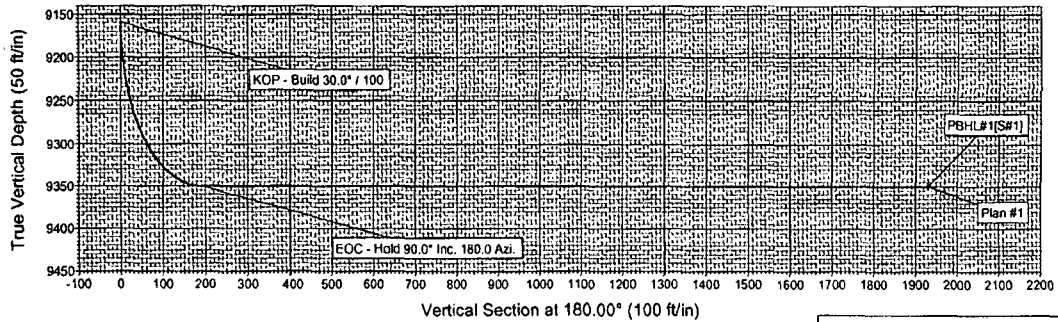
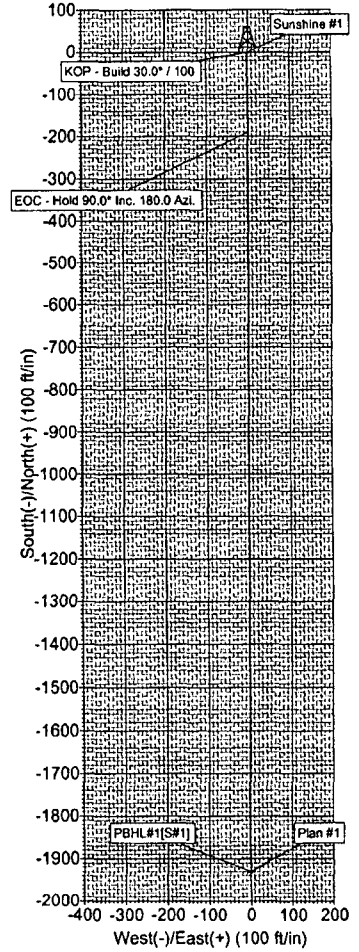


PROJECT DETAILS: Lea County (NAD 83)  
 Geodetic System: US State Plane 1983  
 Datum: North American Datum 1983  
 Ellipsoid: GRS 1980  
 Zone: New Mexico Eastern Zone  
 System Datum: Mean Sea Level



ANNOTATIONS  
 TVD MD Annotation  
 9159.01 9159.01 KOP - Build 30.0° / 100  
 9350.00 9459.01 EOC - Hold 90.0° Inc. 180.0 Azi.

SECTION DETAILS											
Sec	MD	Inc	Azi	TVD	+N-S	+E-W	DLeg	TFace	VSec	Target	
1	9159.00	0.00	0.00	9159.00	0.00	0.00	0.00	0.00	0.00		
2	9159.01	0.00	0.00	9159.01	0.00	0.00	0.00	0.00	0.00		
3	9459.01	90.00	180.00	9350.00	-190.99	0.00	30.00	180.00	190.99		
4	11198.03	90.00	180.00	9350.00	-1930.00	0.00	0.00	0.00	1930.00	PBHL#1[S#1]	



Plan: Plan #1 (Sunshine #1/Lateral #1)  
 Created By: L.D. Burton Date: 10/05/2008



**Black Viper Energy**  
Survey Report



<b>Company:</b>	Cimarex Energy Co., Inc.	<b>Local Co-ordinate Reference:</b>	Site Sunshine #1
<b>Project:</b>	Lea County (NAD 83)	<b>TVD Reference:</b>	WELL @ 0.00ft (Original Well Elev)
<b>Site:</b>	Sunshine #1	<b>MD Reference:</b>	WELL @ 0.00ft (Original Well Elev)
<b>Well:</b>	Sunshine #1	<b>North Reference:</b>	True
<b>Wellbore:</b>	Lateral #1	<b>Survey Calculation Method:</b>	Minimum Curvature
<b>Design:</b>	Plan #1	<b>Database:</b>	EDM 2003.14.1.0 Server DB

<b>Project:</b>	Lea County (NAD 83)		
<b>Map System:</b>	US State Plane 1983	<b>System Datum:</b>	Mean Sea Level
<b>Geo Datum:</b>	North American Datum 1983		
<b>Map Zone:</b>	New Mexico Eastern Zone		

<b>Site:</b>	Sunshine #1				
<b>Site Position:</b>		<b>Northing:</b>	733,549.78 ft	<b>Latitude:</b>	33° 0' 39.665 N
<b>From:</b>	Map	<b>Easting:</b>	900,711.19 ft	<b>Longitude:</b>	103° 9' 39.642 W
<b>Position Uncertainty:</b>	0.00 ft	<b>Slot Radius:</b>	"	<b>Grid Convergence:</b>	0.64 °

<b>Well:</b>	Sunshine #1					
<b>Well Position</b>	<b>+N-S</b>	0.00 ft	<b>Northing:</b>	733,549.78 ft	<b>Latitude:</b>	33° 0' 39.665 N
	<b>+E-W</b>	0.00 ft	<b>Easting:</b>	900,711.19 ft	<b>Longitude:</b>	103° 9' 39.642 W
<b>Position Uncertainty</b>		0.00 ft	<b>Wellhead Elevation:</b>	ft	<b>Ground Level:</b>	0.00 ft

<b>Wellbore:</b>	Lateral #1				
<b>Magnetics</b>	<b>Model Name</b>	<b>Sample Date</b>	<b>Declination</b> (°)	<b>Dip Angle</b> (°)	<b>Field Strength</b> (nT)
	IGRF200510	10/5/2006	8.01	61.12	49,657

<b>Design:</b>	Plan #1				
<b>Audit Notes:</b>					
<b>Version:</b>	<b>Phase:</b>	PROTOTYPE	<b>Tie On Depth:</b>	9,159.00	
<b>Vertical Section:</b>	<b>Depth From (TVD)</b> (ft)	<b>+N-S</b> (ft)	<b>+E-W</b> (ft)	<b>Direction</b> (°)	
	0.00	0.00	0.00	180.00	

<b>Survey Tool Program</b>	<b>Date</b>	10/5/2006			
<b>From</b> (ft)	<b>To</b> (ft)	<b>Survey (Wellbore)</b>	<b>Tool Name</b>	<b>Description</b>	
9,159.00	11,198.03	Plan #1 (Lateral #1)	MWD	Standard MWD	

<b>Planned Survey</b>										
<b>Measured Depth</b> (ft)	<b>Inclination</b> (°)	<b>Azimuth</b> (°)	<b>Vertical Depth</b> (ft)	<b>+N-S</b> (ft)	<b>+E-W</b> (ft)	<b>Vertical Section</b> (ft)	<b>Dogleg Rate</b> (°/100ft)	<b>Build Rate</b> (°/100ft)	<b>Turn Rate</b> (°/100ft)	
9,159.01	0.00	0.00	9,159.01	0.00	0.00	0.00	0.00	0.00	0.00	0.00
<b>KOP - Build 30.0° / 100</b>										
9,459.01	90.00	180.00	9,350.00	-190.99	0.00	190.99	30.00	30.00	0.00	0.00
<b>EOC - Hold 90.0° Inc. 180.0° Azi.</b>										
11,198.03	90.00	180.00	9,350.00	-1,930.00	0.00	1,930.00	0.00	0.00	0.00	0.00





**Black Viper Energy**  
Survey Report



<b>Company:</b>	Cimarex Energy Co., Inc.	<b>Local Co-ordinate Reference:</b>	Site Sunshine #1
<b>Project:</b>	Lea County (NAD 83)	<b>TVD Reference:</b>	WELL @ 0.00ft (Original Well Elev)
<b>Site:</b>	Sunshine #1	<b>MD Reference:</b>	WELL @ 0.00ft (Original Well Elev)
<b>Well:</b>	Sunshine #1	<b>North Reference:</b>	True
<b>Wellbore:</b>	Lateral #1	<b>Survey Calculation Method:</b>	Minimum Curvature
<b>Design:</b>	Plan #1	<b>Database:</b>	EDM 2003.14.1.0 Server DB

Targets									
Target Name	Dip Angle	Dip Dir.	TVD	+N-S	+E-W	Northing	Easting	Latitude	Longitude
hit/miss target	(°)	(°)	(ft)	(ft)	(ft)	(ft)	(ft)		
Shape									
PBHL#1[S#1]	0.00	0.00	9,350.00	-1,930.00	0.00	731,619.90	900,732.71	33° 0' 20.571 N	103° 9' 39.642 W
- plan hits target									
- Point									

Plan Annotations				
Measured Depth	Vertical Depth	Local Coordinates		Comment
(ft)	(ft)	+N-S	+E-W	
		(ft)	(ft)	
9,159.01	9,159.01	0.00	0.00	KOP - Build 30.0° / 100
9,459.01	9,350.00	-190.99	0.00	EOC - Hold 90.0° Inc. 180.0 Azi.

Checked By: \_\_\_\_\_ Approved By: \_\_\_\_\_ Date: \_\_\_\_\_