

PRIMARY PERFORMANCE AND RESERVES

The current state of primary depletion is approximately 91 percent in this field and the average well produces a little less than 2 BOPD. The remaining primary reserves of approximately 79 MBO will predominantly come from three wells, the Quail State 2, State BG 2 and 3. The remaining nine active producers are at or near their ultimate primary performance capacity. Unless it is determined to waterflood this field soon, then the economic viability of this field will end. Attachment No. 3 is a structure map with the ultimate oil and gas recoveries along with the cumulative water production posted for each well. Ultimate recoveries were determined by decline curve analysis on each producing well. Production is more controlled by stratigraphy than structure as illustrated by the structure map. The structure dips from north to south at a rate of approximately 100 feet per mile. The best ultimate well in the field, the Atlantic Richfield No. 1 is one of the lowest structurally but is near the thickest part of the Queen sand. The average ultimate oil produced per well is approximately 44 MBO.

As mentioned earlier, the Queen sand has been subdivided into the Queen B and Queen C sands which are consistently present throughout the proposed unit area. Attachment 4 is a cross section with every well log in the field showing the Queen B & C which is the targeted common source of supply. This cross section also contains the perforated intervals for each well. Net isopach maps with over 14 percent density porosity over the Queen B and Queen C are included as Attachments 5 and 6. These maps were used to calculate the reservoir pore volume. Also shown is the proposed waterflood unit boundary. Average porosity and water saturations for the Queen B and Queen C were determined based on the Nu-Tech log analysis. Cross plots of porosity versus water saturation are included as Attachment Nos. 7 and 8. Volumetric original oil in place (OOIP) for the Queen B and Queen C sands has been calculated and is included in Appendix B. The OOIP for the Queen B is 988,800 STB and for the Queen C is 3,478,673 STB. The combined OOIP is 4,467,473 STB. Seventy-eight percent of the OOIP is in the Queen C sand.

Based on an investigation of all the pertinent data including well files, well logs and well histories, all of the current wells in the field have been perforated and adequately stimulated in the Queen B and Queen C sand intervals. Hence there are no remaining behind pipe or non-producing reserves in this field in the targeted waterflood sand intervals. The remaining secondary reserve potential and how best to recover it will be the focus as the study continues.

SECONDARY RESERVE ANALYSIS

Based on the historical performance, the Quail Queen Field is a solution gas drive reservoir. Primary recovery will be approximately 19 percent of the OOIP leaving 81 percent of the OOIP in play. The approach to water flood recovery potential in the Quail Queen Field includes the analysis of an actual case example, within the field, of sustained low volume disposal of produced water into the producing Queen zones of interest in the Quail State SWD #1. Also a nearby Queen waterflood analogy, the West Pearl Queen Unit, that was unitized and flooded beginning in 1964 will be evaluated. And lastly, a calculation of secondary performance utilizing generic relative permeability data, since this type core data is not available from any of the field wells, will be examined.

The Queen has been successfully flooded for years in the Permian Basin and, as mentioned, there is

BEFORE EXAMINER	
OIL CONSERVATION DIVISION	
FILED	EXHIBIT NO. 4
CASE NO.	14001

Well	Primary to 7/1/2007			Secondary to 7/1/2007			Pattern Oil,BBLS
	Oil,BBLS	Pattern Fraction	Pattern Oil,BBLS	Oil,BBLS	Pattern Fraction	Pattern Oil,BBLS	
Quail State 2	105,378	0.25	26,345	1,764	1.00	1,764	28,109
Quail State 4	37,307	0.25	9,327	2,061	1.00	2,061	11,388
State BG 3	40,894	0.25	10,224	3,227	1.00	3,227	13,451
Quail State 6	23,878	0.25	5,970	2,230	1.00	2,230	8,200
Quail State 1	23,961	1.00	23,961	-	1.00	-	23,961
	231,418		75,825	9,282		9,282	85,107

OOIP reservoir parameters for the 80 acre pattern:

Acres = 80

Avg height = 12.5 feet

Average porosity = 12%

Average water sat'n = 45%

$$\begin{aligned}
 \text{Pore Volume (PV)} &= 7758 * A * h * \Phi \\
 &= 7758 * 80 * 12.5 * 0.12 \\
 &= 930,960 \text{ BBLS}
 \end{aligned}$$

$$\begin{aligned}
 \text{OOIP} &= (PV * (1 - S_w)) / \beta_{oi} \\
 &= (930,960 * (1 - 0.45)) / 1.15 \\
 &= 445,242 \text{ STB}
 \end{aligned}$$

SWD/Injection to Date:

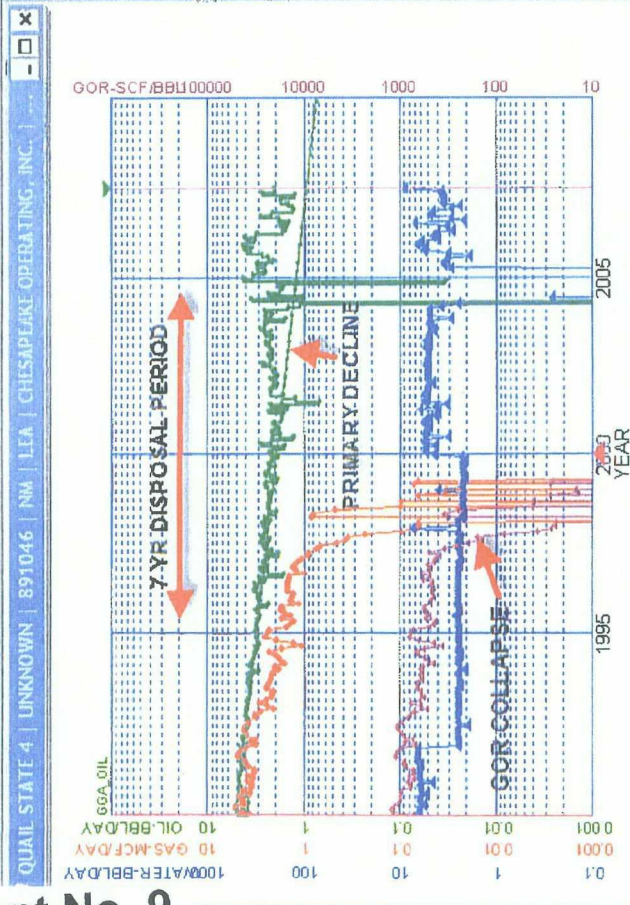
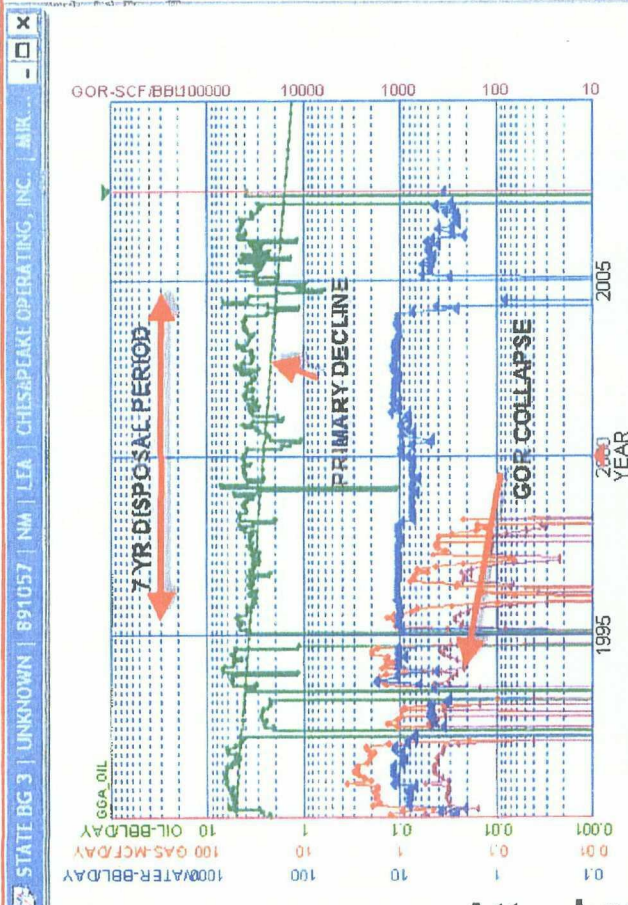
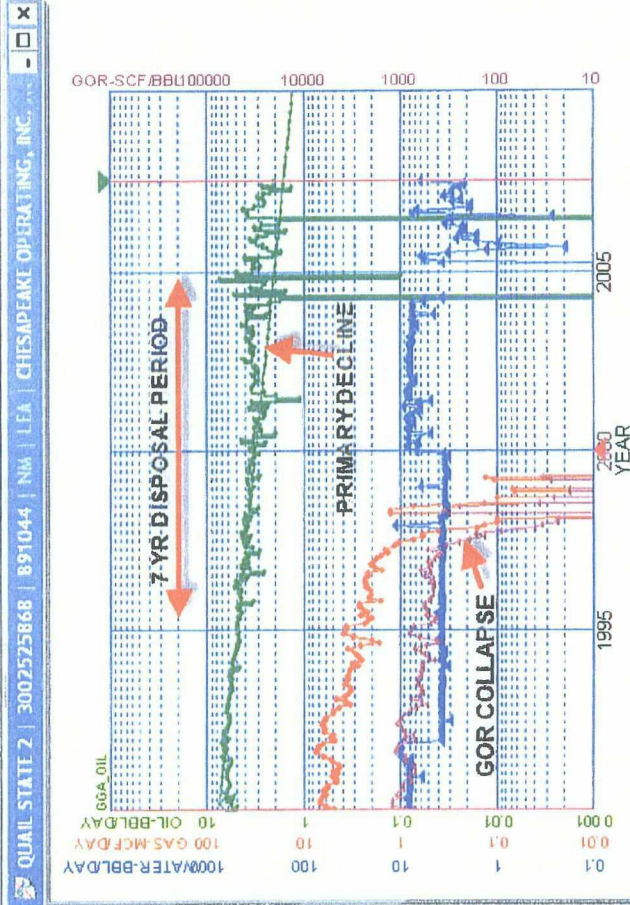
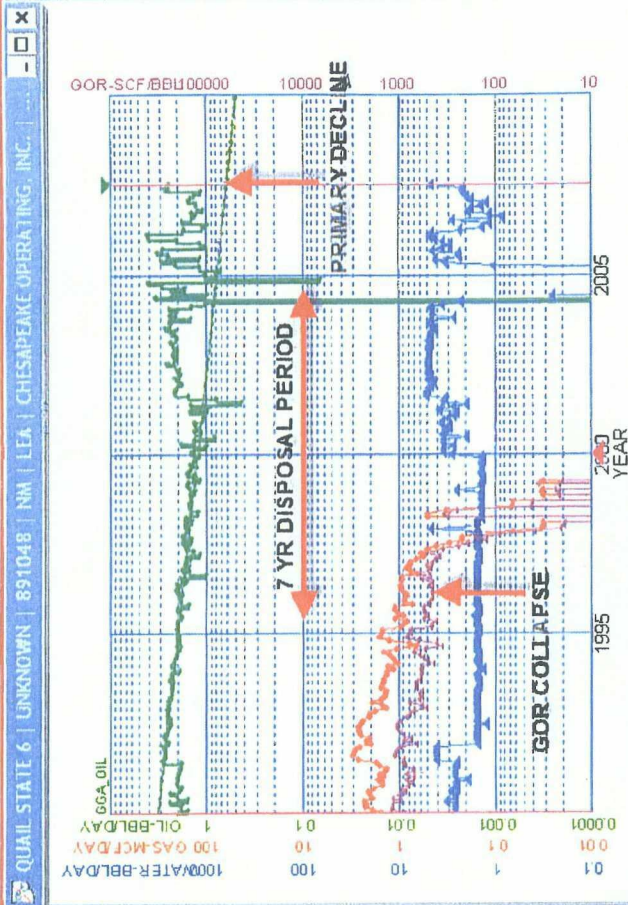
206,908 BBLS water injected over seven years

0.22 pore volumes injected

As of 7/1/2007:

Primary Recovery Efficiency	17.03%	with 22% of PV injected
Secondary Recovery Efficiency	2.08%	
Total	19.11%	

4 WELL MONTAGE CENTERED AROUND QUAIL STATE SWD #1



STATE OF NEW MEXICO
DEPARTMENT OF ENERGY, MINERALS AND NATURAL RESOURCES
OIL CONSERVATION DIVISION

APPLICATION OF CHESAPEAKE EXPLORATION,
LLC, FOR STATUTORY UNITIZATION OF THE
QUAIL-QUEEN UNIT AREA, LEA COUNTY,
NEW MEXICO.

CASE NO. 14001

APPLICATION OF CHESAPEAKE EXPLORATION,
LLC, FOR APPROVAL OF A WATERFLOOD PROJECT
AND QUALIFICATION OF THE PROJECT AREA OF
THE QUAIL-QUEEN UNIT FOR THE RECOVERED
OIL TAX RATE PURSUANT TO THE ENHANCED
OIL RECOVERY ACT, LEA COUNTY,
NEW MEXICO.

CASE NO. 14002

PRE-HEARING STATEMENT

This Pre-hearing Statement is submitted by Miller Stratvert PA (J. Scott Hall) on behalf
of Pintail Production Company, Inc. as required by the Oil Conservation Division.

APPEARANCES

APPLICANT'S ATTORNEY

William F. Carr, Esq.
Holland & Hart LLP
P.O. Box 2208
Santa Fe, NM 87504-2208
(505) 988-4421

APPLICANT

Chesapeake Exploration LLC

OPPONENT'S ATTORNEY

J. Scott Hall
Miller Stratvert PA
150 Washington Avenue, Suite 300
P.O. Box 1986
Santa Fe, NM 87504
(505) 989-9614

OPPONENT

Pintail Production Company, Inc.

OTHER PARTY'S ATTORNEY

OTHER PARTY

RECEIVED

2007 OCT 31 AM 8 00
NOV 1

STATEMENT OF THE CASE

APPLICANT

Chesapeake Exploration LLC proposes the unitization of all mineral interests in the Queen formation, Quail-Queen Pool, for the establishment of an enhanced recovery waterflood unit within the boundaries of the proposed Unit Area. Chesapeake further seeks qualification of the proposed unit for the recovered oil tax rate pursuant to the Enhanced Oil Recovery Act.

OPPOSITION OR OTHER PARTY

Pintail Production Company is the owner of leasehold working interests within the Unit Area of the proposed Quail-Queen Unit.

Pintail Production Company objects to the participation formula for the Unit proposed by Chesapeake Exploration LLC for the reasons, among others, that it will not result in the allocation of unitized hydrocarbons in a fair, reasonable and equitable basis as required by NMSA 1978 §70-7-6 of the Statutory Unitization Act. Pintail Production Company further asserts that Chesapeake Exploration LLC failed to make a good faith effort to secure its voluntary participation in the proposed unit.

PROPOSED EVIDENCE

APPLICANT

WITNESSES

EST. TIME

NO. OF EXHIBITS

OPPONENT

WITNESSES

EST. TIME

NO. OF EXHIBITS

Harvey Mueller, II, Petroleum Engineer

20 minutes

5

PROCEDURAL MATTERS

None.

MILLER STRATVERT P.A.

By: _____

J. Scott Hall

J. Scott Hall
P.O. Box 1986
Santa Fe, New Mexico 87504-1986
(505) 989-9614
Attorneys for Pintail Production Company,
Inc.

Certificate of Mailing

I hereby certify that a true and correct copy of the foregoing was delivered via facsimile on the 31 day of October, 2007, as follows:

William F. Carr, Esq.
Holland & Hart LLP
P.O. Box 2208
Santa Fe, NM 87504-2208
(505) 983-6043 (fax)

James G. Bruce, Esq.
P.O. Box 1056
Santa Fe, NM 87504-1056
(505) 982-2151 (fax)

J. Scott Hall

J. Scott Hall