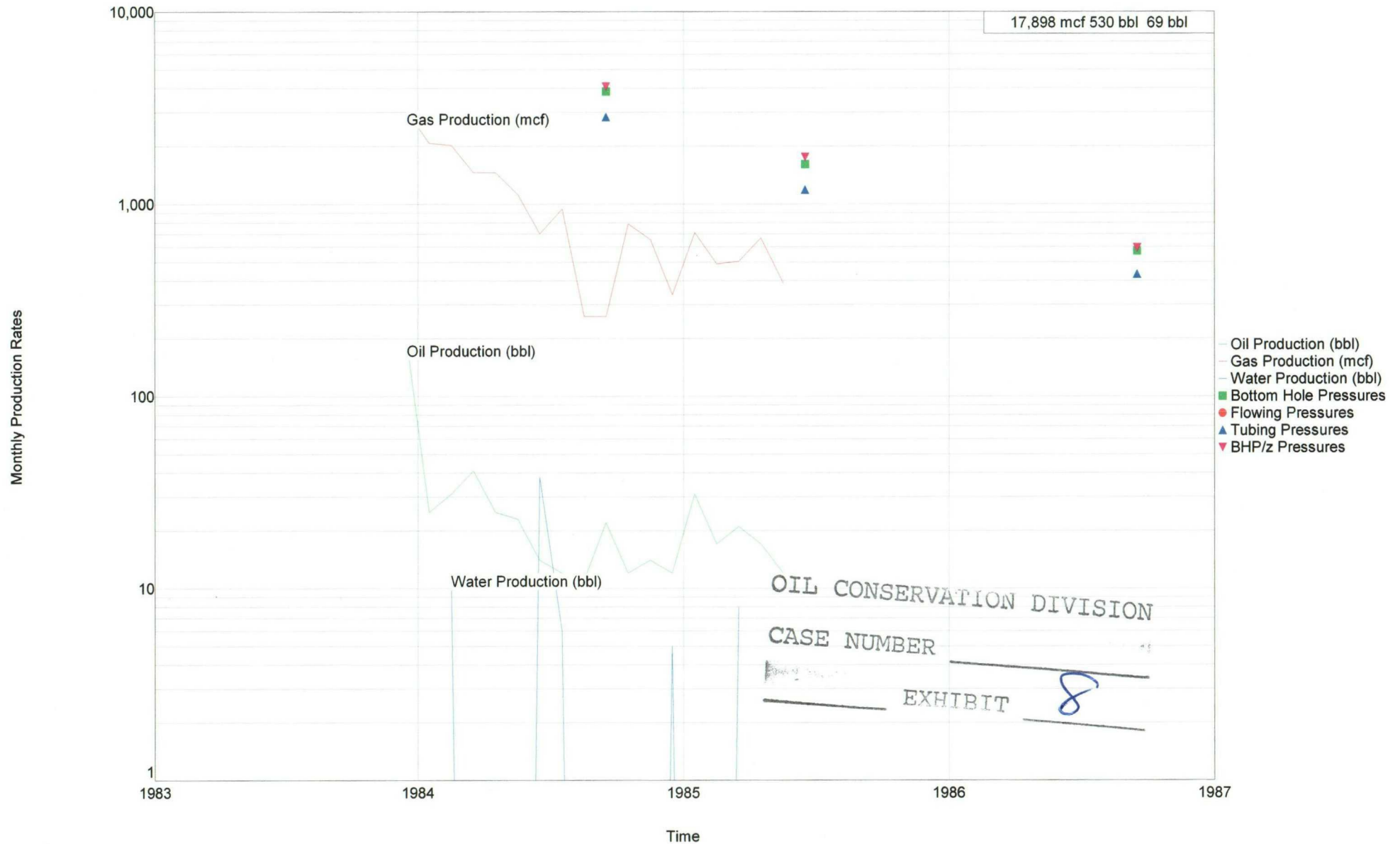


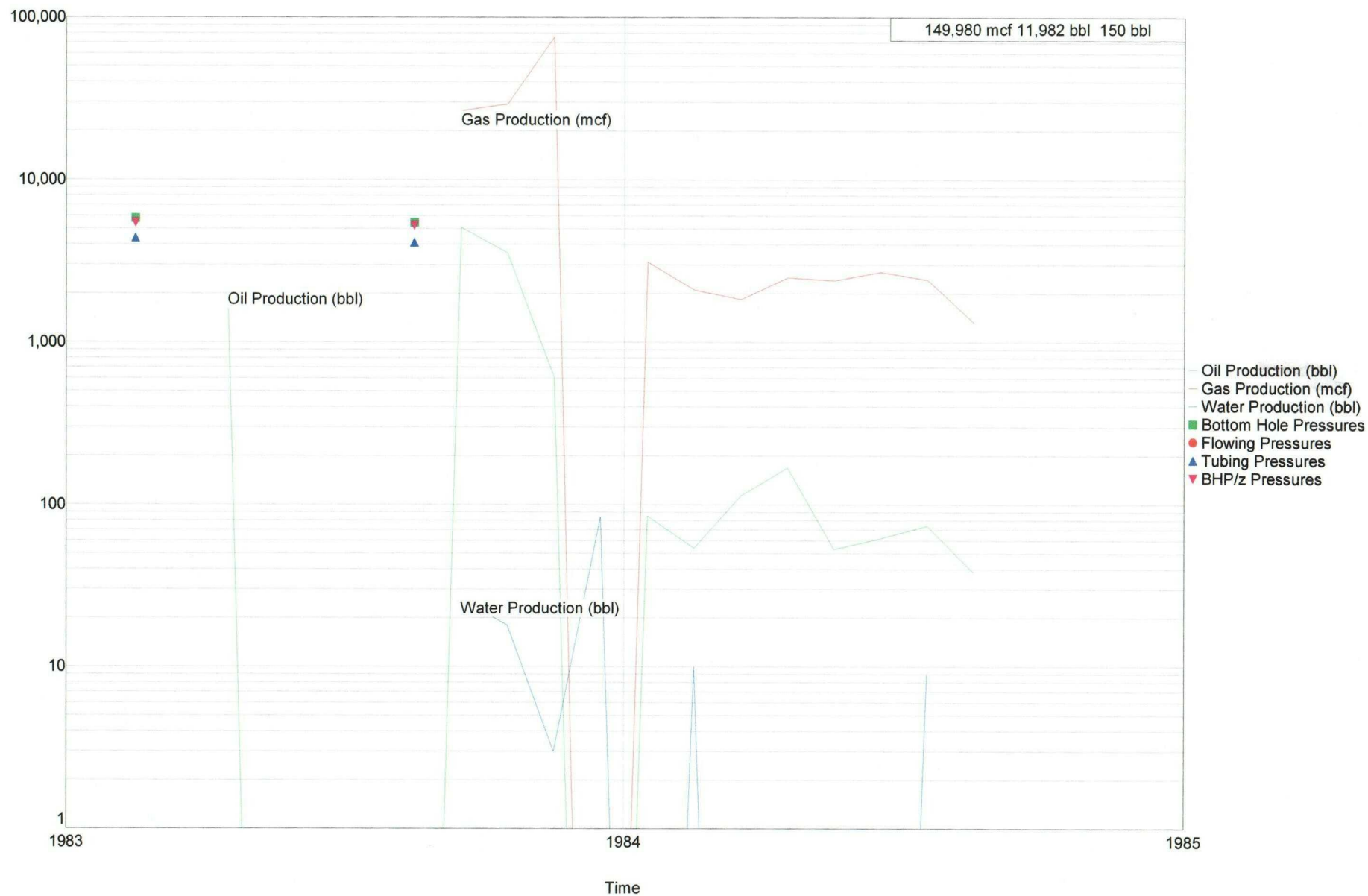
Lease Name: HELLER CO TRUST COM A
County, State: LEA, NM
Operator: BP AMERICA PRODUCTION COMPANY
Field: OSUDO WEST
Reservoir: MORROW
Location: 24 20S 35E

HELLER CO TRUST COM A - OSUDO WEST 30025281930000 12/1983 05/1985



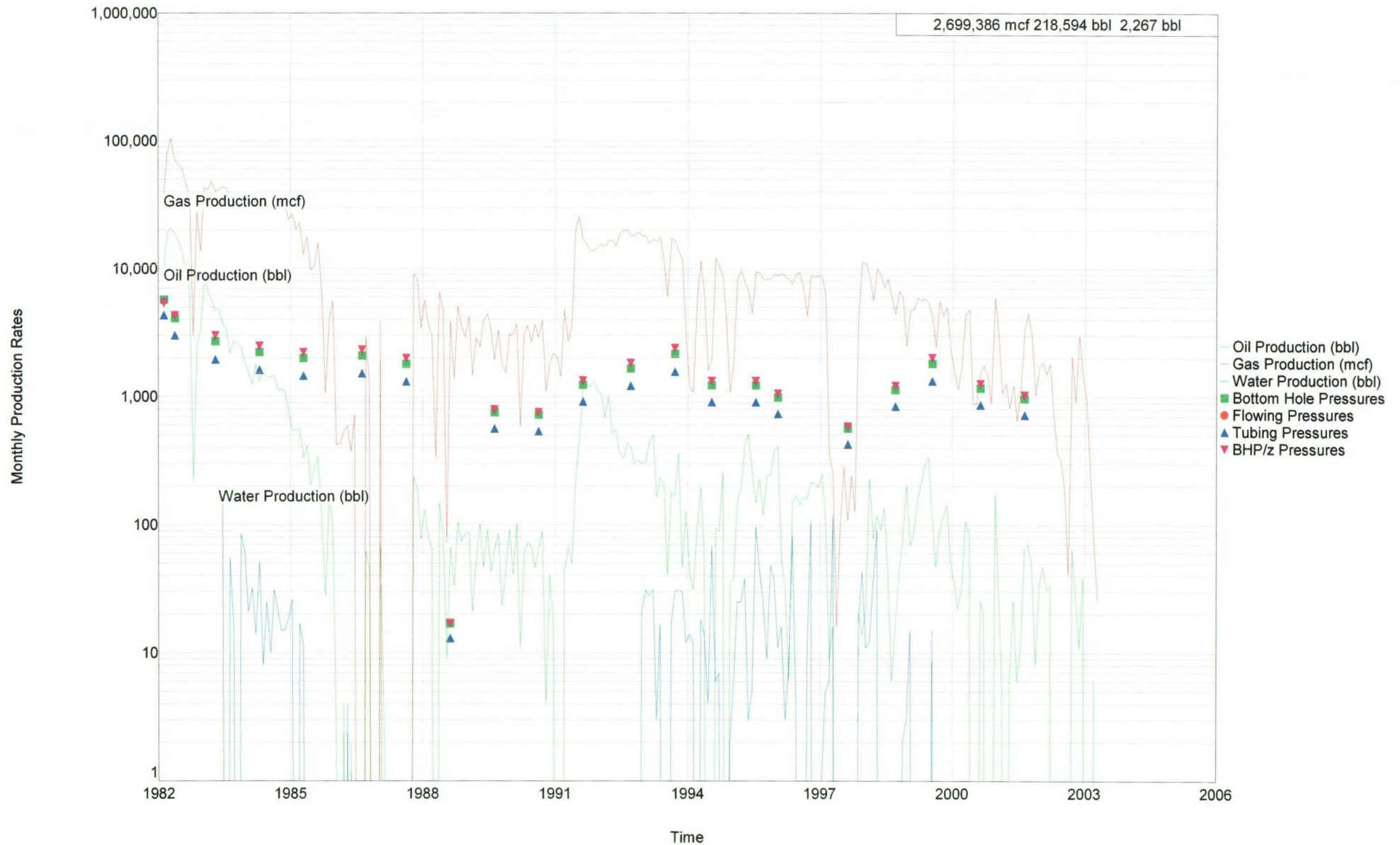
Lease Name: BEST GAS COM
County, State: LEA, NM
Operator: BP AMERICA PRODUCTION COMPANY
Field: OSUDO WEST
Reservoir: MORROW
Location: 23 20S 35E SW NE

BEST GAS COM - OSUDO WEST 30025279600000 04/1983 08/1984



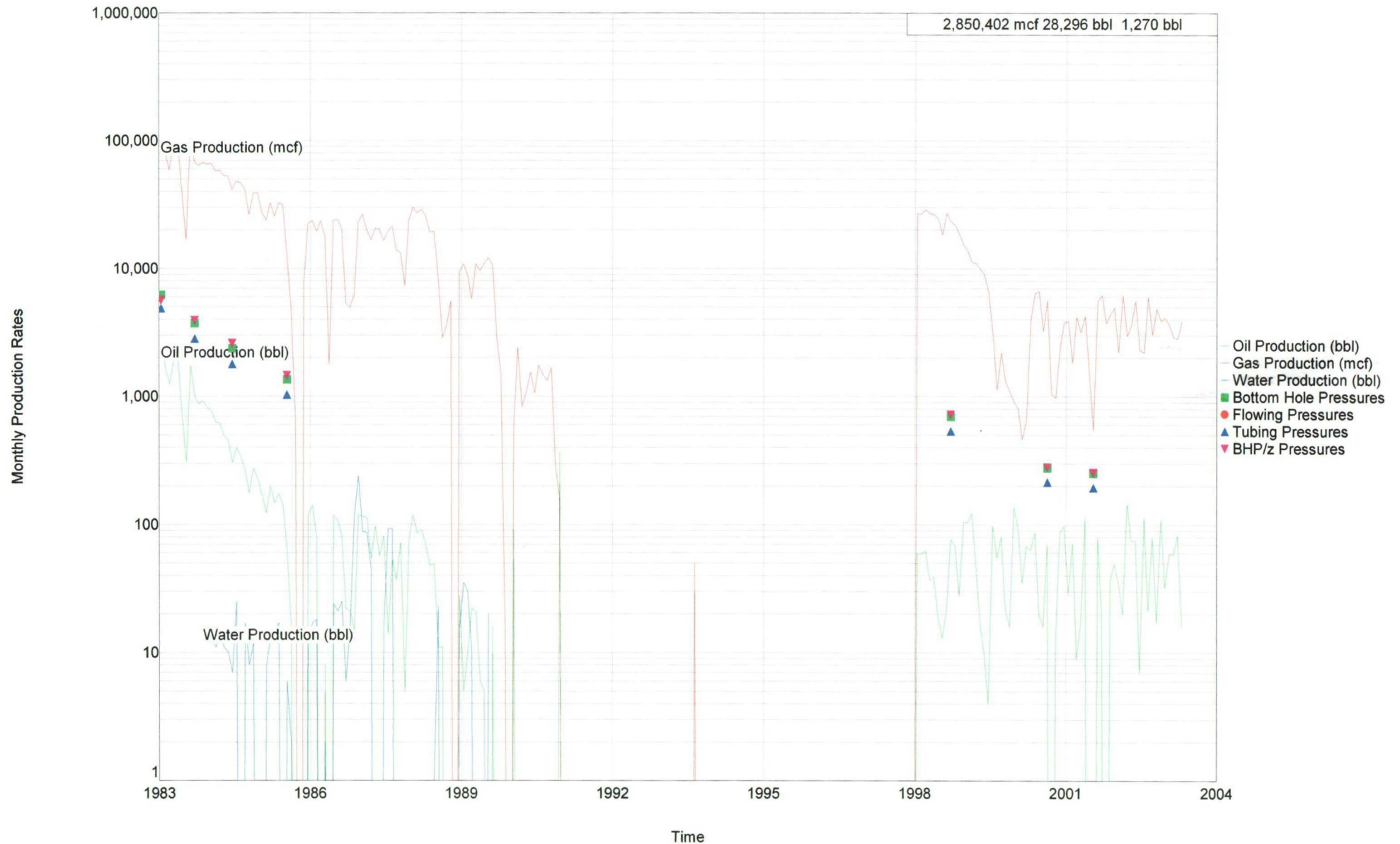
Lease Name: WATKINS B GAS COM
County, State: LEA, NM
Operator: MITCHELL ENERGY CORPORATION
Field: OSUDO WEST
Reservoir: MORROW
Location: 23 20S 35E

WATKINS B GAS COM - OSUDO WEST 30025270620000 02/1982 04/2003



Lease Name: SOUTHEAST LEA UNIT
County, State: LEA, NM
Operator: BLAKE PRODUCTION COMPANY INCORPORATE
Field: OSUDO WEST
Reservoir: MORROW
Location: 26 20S 35E

SOUTHEAST LEA UNIT - OSUDO WEST 30025278980000 01/1983 04/2003



DISTRICT I
P.O. Box 1000, Hobbs, NM 88241-1000

DISTRICT II
P.O. Drawer 80, Lordsburg, NM 88021-0710

DISTRICT III
1000 Rio Brazos Rd., Artes, NM 87410

DISTRICT IV
P.O. BOX 2088, SANTA FE, N.M. 87504-2088

State of New Mexico

Energy, Minerals and Natural Resources Department

OIL CONSERVATION DIVISION

P.O. Box 2088

Santa Fe, New Mexico 87504-2088

Form OC-102
Revised February 10, 1994
Submit to Appropriate District Office
State Lease - 4 Copies
Fee Lease - 3 Copies

WELL LOCATION AND ACREAGE DEDICATION PLAT

☐ AMENDED REPORT

API Number	Pool Code	Pool Name
Property Code	Property Name BYERS	Well Number 1
GRID No.	Operator Name UNIT PETROLEUM COMPANY	Elevation 3670'

Surface Location

UL or lot No.	Section	Township	Range	Lot Idn	Feet from the	North/South line	Feet from the	East/West line	County
J	23	20-S	35-E		2100'	SOUTH	1600'	EAST	LEA

Bottom Hole Location If Different From Surface

UL or lot No.	Section	Township	Range	Lot Idn	Feet from the	North/South line	Feet from the	East/West line	County
Dedicated Acres		Joint or Infill	Consolidation Code	Order No.					

NO ALLOWABLE WILL BE ASSIGNED TO THIS COMPLETION UNTIL ALL INTERESTS HAVE BEEN CONSOLIDATED
OR A NON-STANDARD UNIT HAS BEEN APPROVED BY THE DIVISION

<p>OIL CONSERVATION DIVISION</p> <p>CASE NUMBER</p> <p>EXHIBIT 89</p>				<p>OPERATOR CERTIFICATION</p> <p>I hereby certify that the information contained herein is true and complete to the best of my knowledge and belief.</p> <p>Signature _____</p> <p>Printed Name _____</p> <p>Title _____</p> <p>Date _____</p>	
				<p>SURVEYOR CERTIFICATION</p> <p>I hereby certify that the well location shown on this plat was plotted from field notes of actual surveys made by me or under my supervision, and that the same is true and correct to the best of my belief.</p> <p>June 27, 2003</p> <p>Date Surveyed _____ AWB</p> <p>Signature of Professional Surveyor _____</p> <p>Professional Surveyor Seal: RONALD J. EIDSON, STATE OF NEW MEXICO, No. 70311.0673, Exp. 6/30/03</p> <p>Certificate No. RONALD J. EIDSON 3239, DAVID EIDSON 12641</p>	
<p>GEOGRAPHIC COORDINATE</p> <p>NAD 27 NMEZ</p> <p>X = 567570.7 N</p> <p>Y = 780153.8 E</p> <p>LAT. = 32°33'25.45"N</p> <p>LONG. = 103°25'26.66"W</p> <p>Diagram showing well location with dimensions: 1600' (horizontal) and 2100' (vertical).</p>					