

DISTRICT I  
1625 N. French Dr., Hobbs, N.M. 88240

State of New Mexico  
Energy, Minerals & Natural Resources Department

Form C-102  
Revised October 12, 2005

DISTRICT II  
1301 W. Grand Avenue, Artesia, N.M. 88210

Submit to Appropriate District Office  
State Lease - 4 Copies  
Fee Lease - 3 Copies

DISTRICT III  
1000 Rio Brazos Rd., Aztec, N.M. 87410

OIL CONSERVATION DIVISION  
1220 South St. Francis Dr.  
Santa Fe, NM 87505

DISTRICT IV  
1220 S. St. Francis Dr., Santa Fe, NM 87505

☐ AMENDED REPORT

WELL LOCATION AND ACREAGE DEDICATION PLAT

<sup>1</sup> API Number	<sup>2</sup> Pool Code	<sup>3</sup> Pool Name BASIN FRUITLAND COAL
<sup>4</sup> Property Code	<sup>5</sup> Property Name 32-5 UNIT	<sup>6</sup> Well Number 115
<sup>7</sup> GRID No.	<sup>8</sup> Operator Name ENERGEN RESOURCES CORPORATION	<sup>9</sup> Elevation 6322'

<sup>10</sup> Surface Location

UL or lot no. P	Section 22	Township 32N	Range 6W	Lot Idn	Feet from the 120'	North/South line SOUTH	Feet from the 50'	East/West line EAST	County RIO ARRIBA
--------------------	---------------	-----------------	-------------	---------	-----------------------	---------------------------	----------------------	------------------------	----------------------

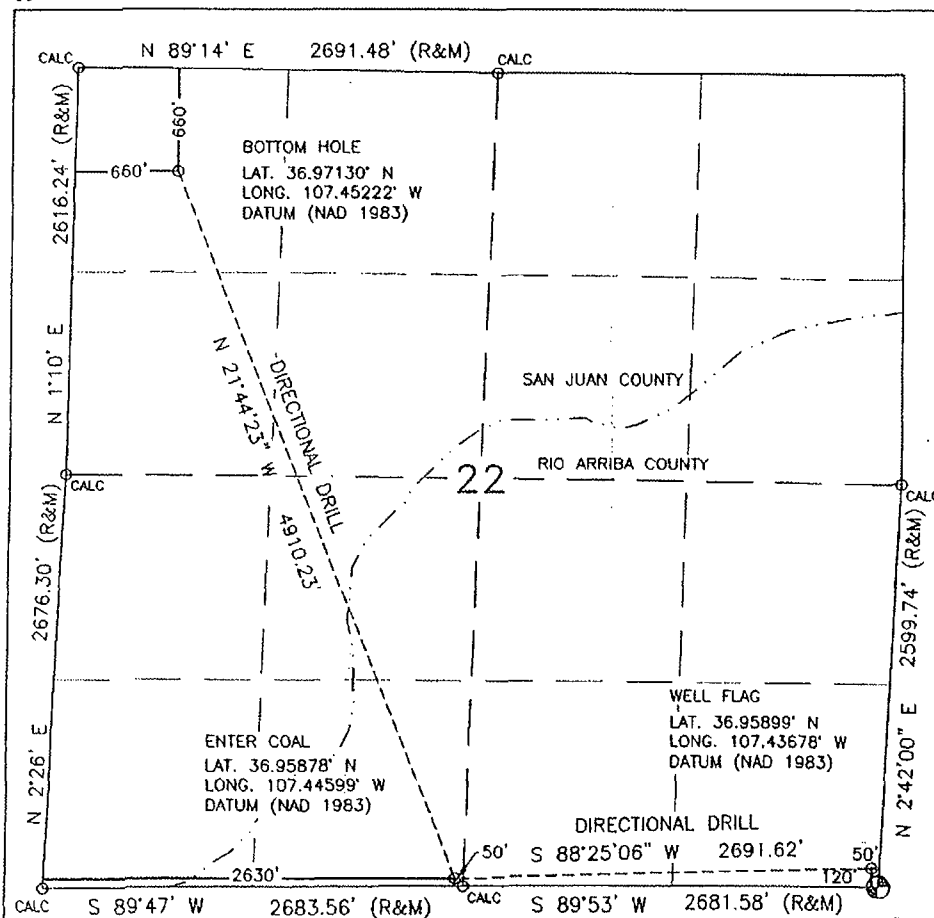
<sup>11</sup> Bottom Hole Location If Different From Surface

UL or lot no. D	Section 22	Township 32N	Range 6W	Lot Idn	Feet from the 660'	North/South line NORTH	Feet from the 660'	East/West line WEST	County SAN JUAN
--------------------	---------------	-----------------	-------------	---------	-----------------------	---------------------------	-----------------------	------------------------	--------------------

<sup>12</sup> Dedicated Acres	<sup>13</sup> Joint or Infill	<sup>14</sup> Consolidation Code	<sup>15</sup> Order No.
-------------------------------	-------------------------------	----------------------------------	-------------------------

NO ALLOWABLE WILL BE ASSIGNED TO THIS COMPLETION UNTIL ALL INTERESTS HAVE BEEN CONSOLIDATED  
OR A NON-STANDARD UNIT HAS BEEN APPROVED BY THE DIVISION

16



FND 1" P&C LS10201  
32-06 SEC 26

<sup>17</sup> OPERATOR CERTIFICATION

I hereby certify that the information contained herein is true and complete to the best of my knowledge and belief, and that this organization either owns a working interest or unleased mineral interest in the land including the proposed bottom hole location or has a right to drill this well at this location pursuant to a contract with an owner or a compulsory pooling order heretofore entered by the division.

Signature \_\_\_\_\_ Date \_\_\_\_\_

Printed Name \_\_\_\_\_

<sup>18</sup> SURVEYOR CERTIFICATION

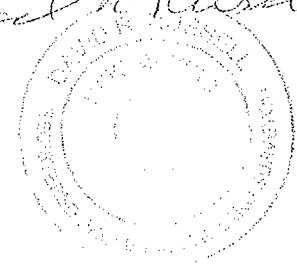
I hereby certify that the well location shown on this plat was plotted from field notes of actual surveys made by me or under my supervision, and that the same is true and correct to the best of my belief.

AUGUST 6, 2007

Date of Survey

Signature and Seal of Professional Surveyor:

*David Russell*



DAVID RUSSELL

Certificate Number 10201

EXHIBIT

B