

LEA COUNTY, N.M.

T-15-S R-36-E

BEFORE THE OIL CONSERVATION DIVISION
Santa Fe, New Mexico
Case No. 14122 Exhibit No. 10
Submitted by:
PECOS OPERATING COMPANY
Hearing Date: May 15, 2008

SEC. 9 (M)

SEC. 9 (N)

SEC. 16 (B)

SCHLUMBERGER WELL SURVEYING CORPORATION
LATEROLOG

COMPANY HALL AND STEWART
DRILLING COMPANY
WELL GRAHAM # 1
FIELD CAUDILL
LOCATION SEC. 9-15S-36E
COUNTY LEA
STATE NEW MEXICO

Location of Well
330' f SL
990' f WL
LL-GR (LS-MLL)

Elevation DF 3924
KB
GL

FILING No.

PERFORATING GUNS ATLAS CORP.
SIMULTANEOUS RADIATION LOG

NATURAL GAMMA RADIATION
REDUCED NEUTRON RADIATION

LOCATION
SEC. 9
TWP. 15S
RGE. 36E
560' FSL
1980' EW
08 NO. 1318

COMPANY HUMBLE OIL & REFINING COMPANY
WELL MAYME GRAHAM # 1
FIELD CAUDILL
COUNTY LEA
STATE NEW MEXICO
TOWNSHIP 15 S
RANGE 36 E

DE MEASURED FROM 1' ABOVE ROTARY TABLE
ELEVATION 3920 D.F.

ELLING MEASURED FROM
GROUND LEVEL
ELEVATION 3909.5 GL

MEASURED BY GAMMA RAY

SCHLUMBERGER WELL SURVEYING CORPORATION
Gamma Ray - Neutron

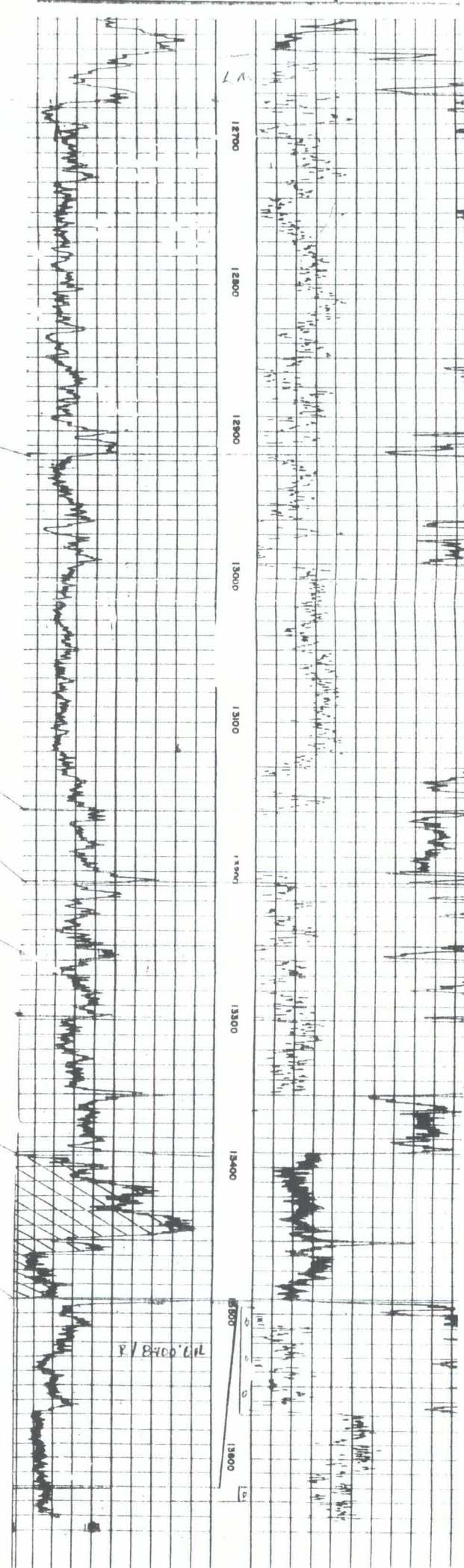
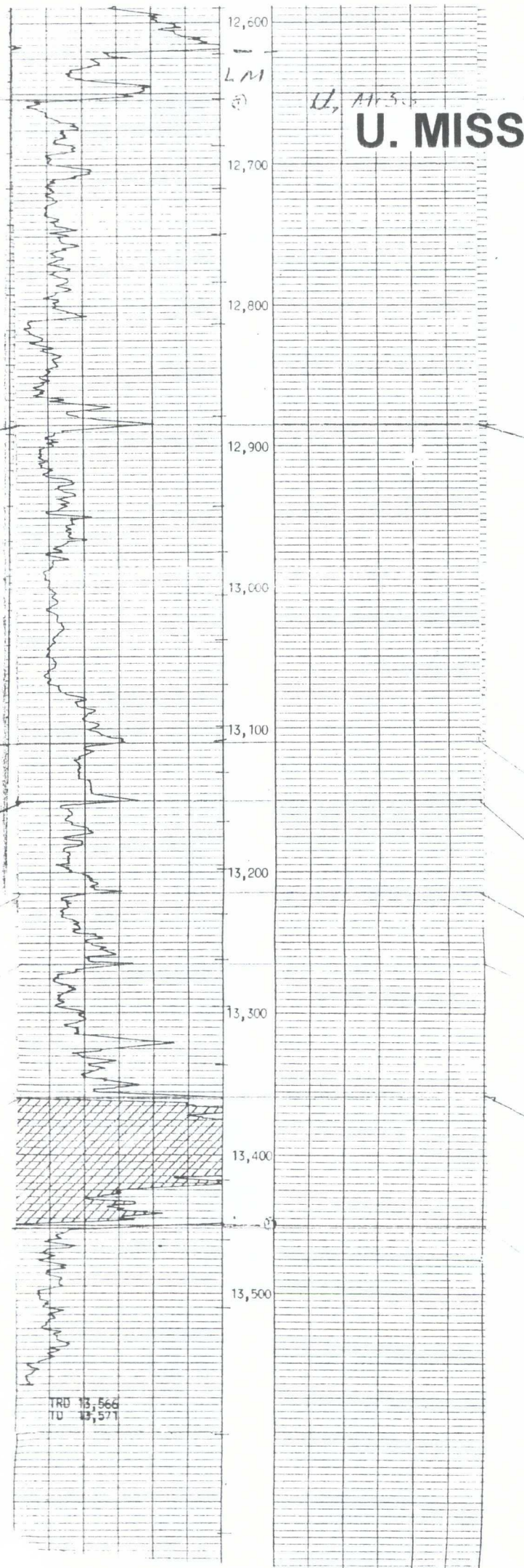
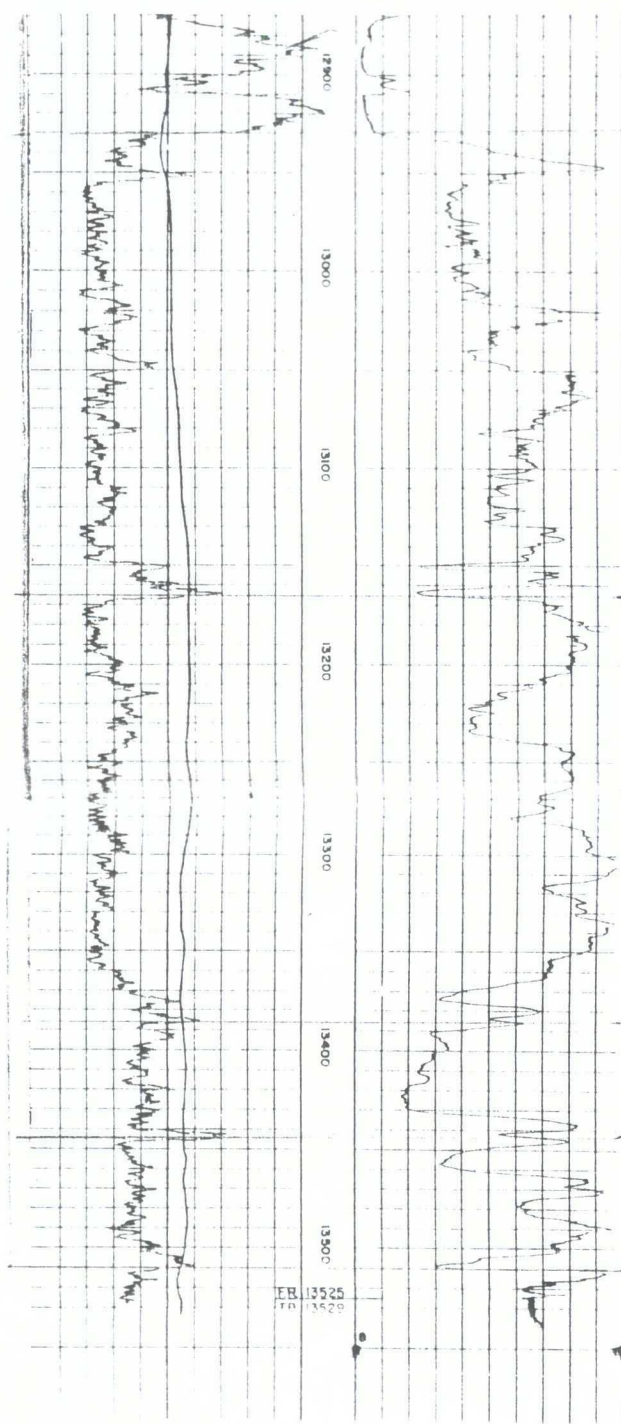
COMPANY SHELL OIL COMPANY
WELL STATE GA # 7
FIELD CAUDILL
LOCATION SEC. 16-15S-36E
COUNTY LEA
STATE NEW MEXICO

Location of Well
660' f NL
2310' f EL
Sec. 16-15S-36E

GRN
(14. ES)

Elevations DF 3917
KB
or GL

FILING No.



WOODFORD
DEVONIAN