

Gas, Mcf/mo
 LVIEW
 Qual= 5/2008
 Ref= 97563
 Cum= 124118
 EUR= 221681
 Yrs= 17.250
 Qref= 1098.4
 De= 10.532001
 Dmin= 7.000
 b= 3.500000
 Gab= 300.0

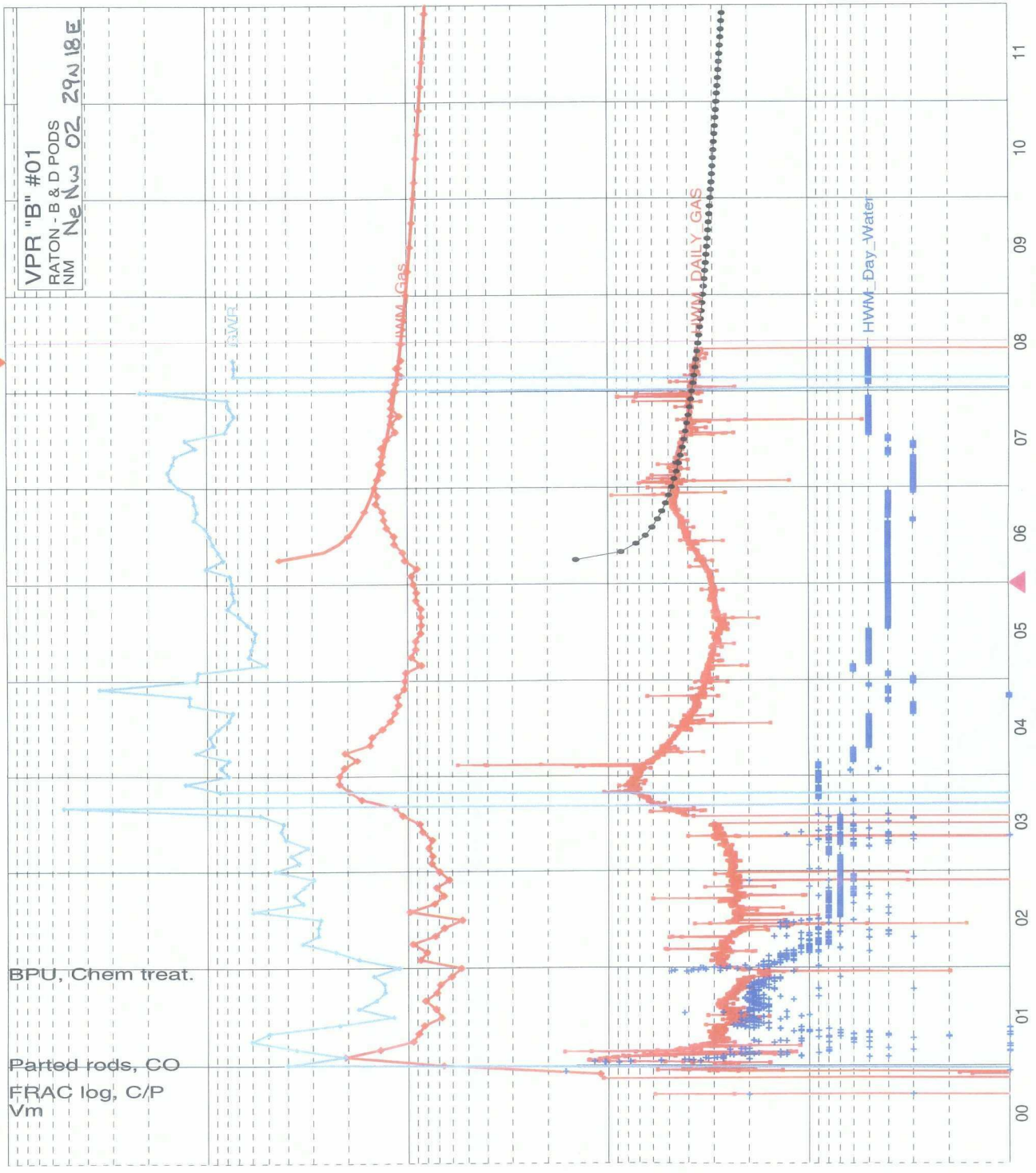
MCFPD
 LVIEW
 Qual= 5/2008
 Ref= 100200
 Cum= 123400
 EUR= 223600
 Yrs= 17.250
 Qref= 36.1
 De= 10.532001
 Dmin= 7.000
 b= 3.500000
 Gab= 9.9

Water, bbl/d
 LVIEW
 Qual= 5/2008
 Ref= 17909
 Cum= 14214

PSI
 Ref= 5/2008
 Cum= 0

MCF/BBL
 Ref= 5/2008
 Cum= 0

MCF/BBL 10 1 0.1 0.01 0.001



Water, bbl/day 10000 1000 100 10

MCFPD 10000 1000 100 10

Gas, Mcf/mo 10000 1000 100 10

VPR "B" #01
 RATON - B & D PODS
 NM Ne Nw 02 29 N 18 E

BPU, Chem treat.
 Parted rods, CO
 FRAC log, C/P
 Vm

Year

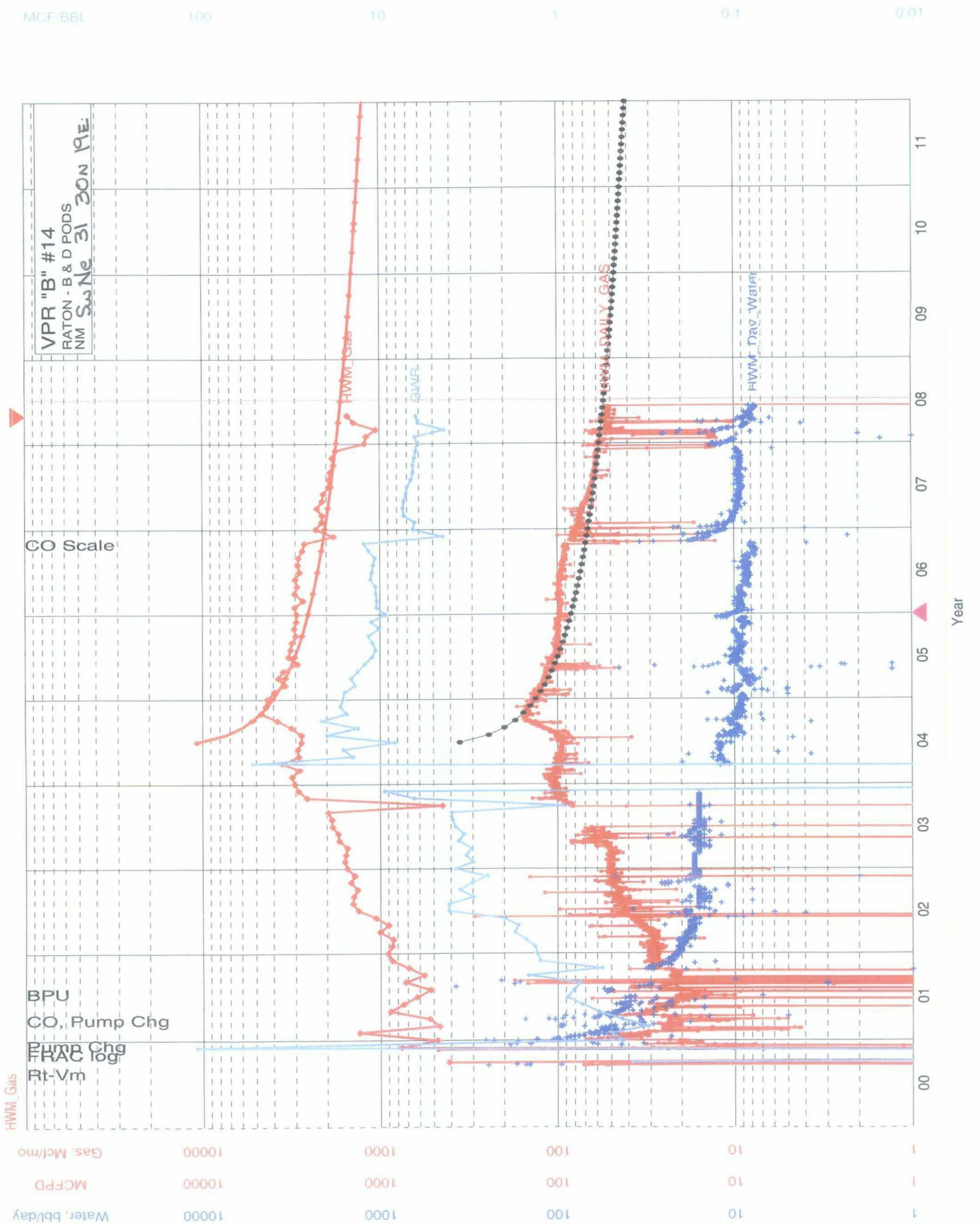
Gas, Mcf/mo
 Qual= LVIEW
 Ref= 5/2008
 Cum= 189493
 Rem= 219540
 EUR= 409033
 Yrs= 23.332
 Qref= 1692.7
 De= 9.741532
 Dmin= 7.000
 b= 2.229195
 Qab= 300.0

MCFPD
 Qual= LVIEW
 Ref= 5/2008
 Cum= 186887
 Rem= 218320
 EUR= 405207
 Yrs= 23.332
 Qref= 55.7
 De= 9.741532
 Dmin= 7.000
 b= 2.229195
 Qab= 9.9

Water, bbl/d
 Ref= 5/2008
 Cum= 38648

PSI
 Ref= 5/2008
 Cum= 33193

MCF/BBL
 Ref= 5/2008
 Cum= 0



VPR "B" #14
 RATON - B & D PODS
 NM SW Ne 31 30N 19E

HWM Gas
 BPU
 CO, Pump Chg
 FRAC Chg log
 Rt-Vm

Gas, Mcf/mo 10000
 MCFPD 10000
 Water, bbl/day 10000
 PSI 100

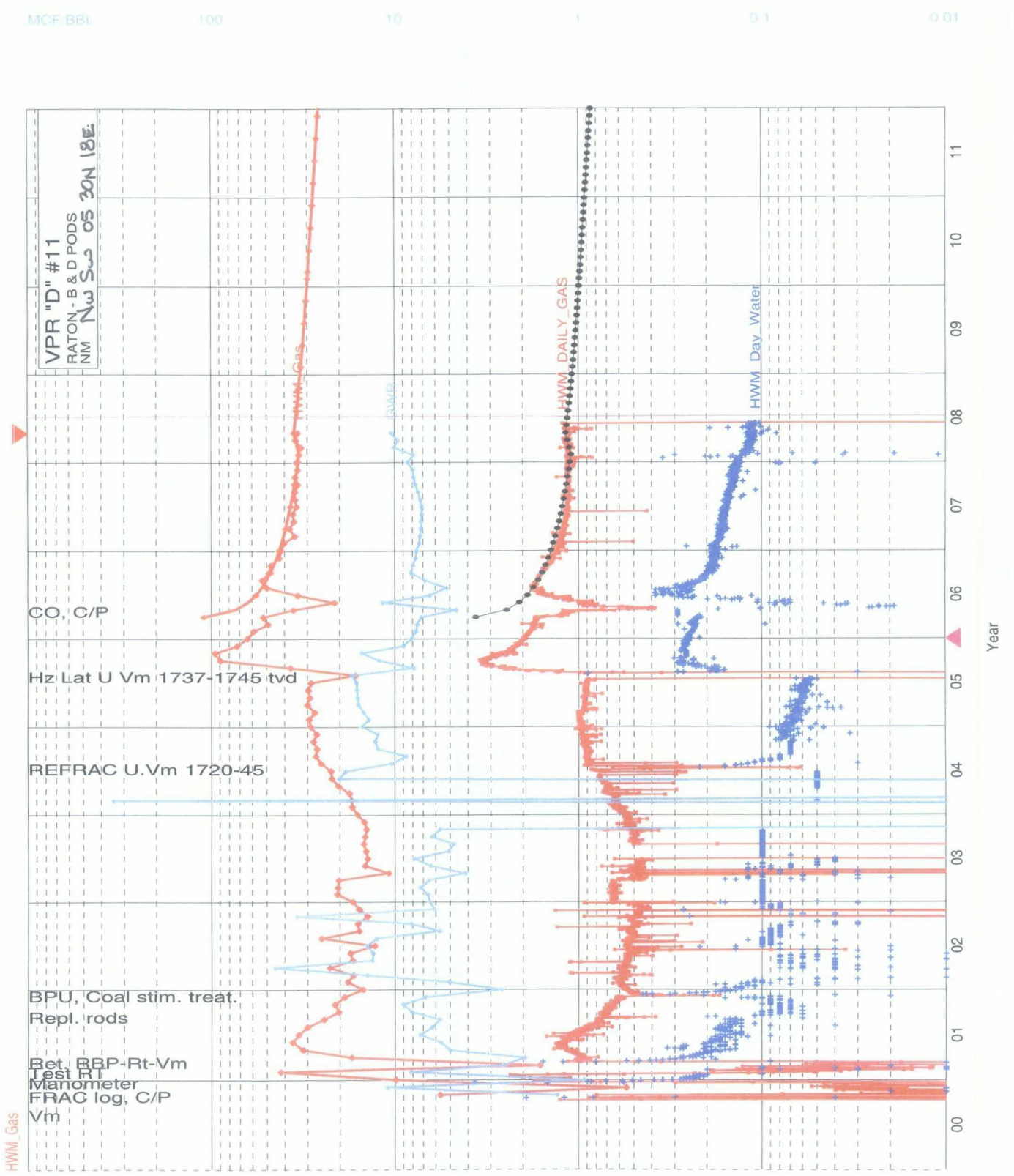
Year

Gas, Mctf/mo
 Qual= LVIEW
 Ref= 5/2008
 Cum= 263077
 Rem= 514501
 EUR= 777578
 Yrs= 33.500
 Qref= 3564.0
 De= 10.484355
 Dmin= 7.000
 Qab= 3.500000
 b= 300.0

MCFPD
 Qual= LVIEW
 Ref= 5/2008
 Cum= 258695
 Rem= 512154
 EUR= 770849
 Yrs= 33.500
 Qref= 117.2
 De= 10.484355
 Dmin= 7.000
 b= 3.500000
 Qab= 9.9

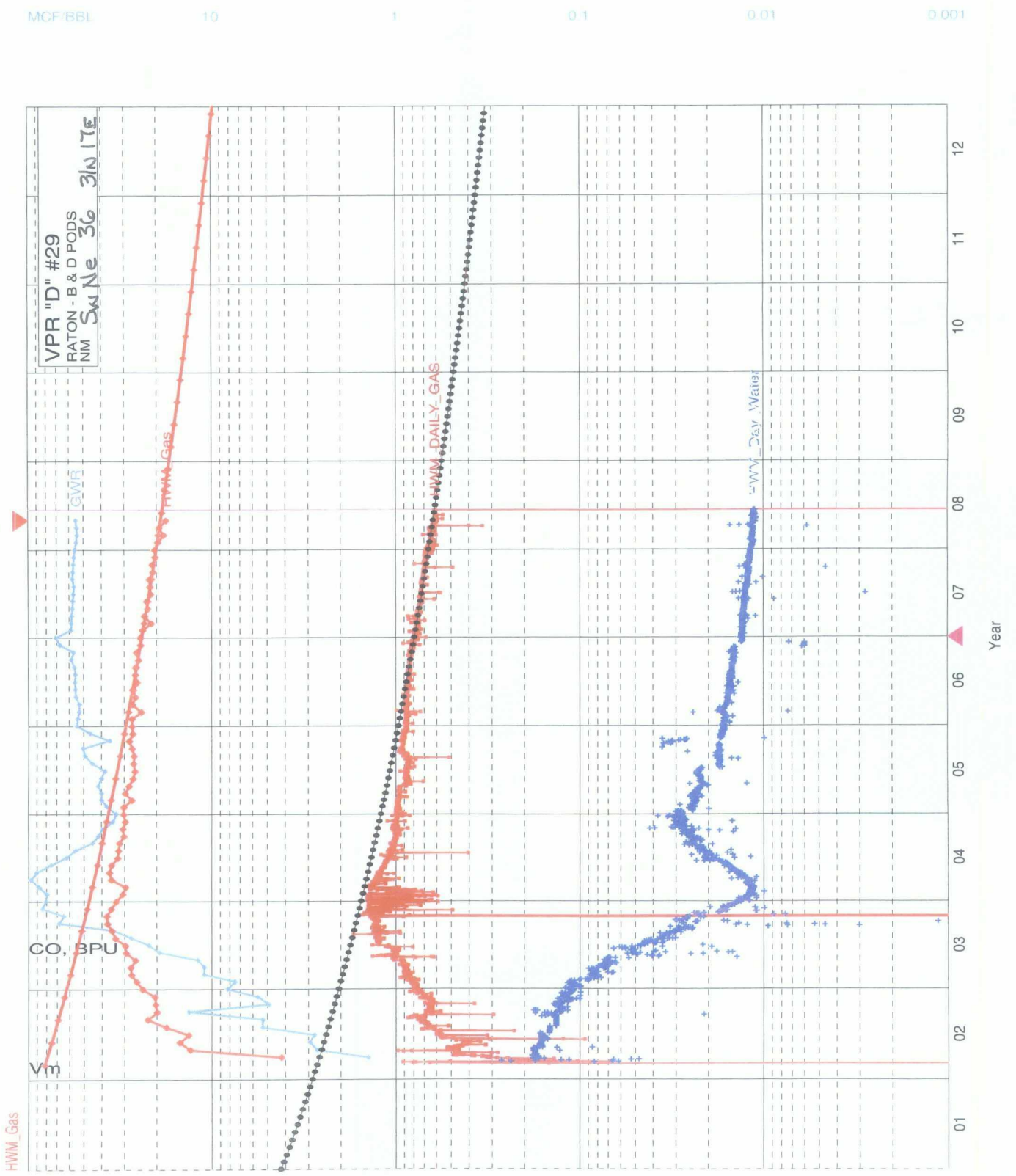
Water, bbl/o
 Qual= LVIEW
 Ref= 5/2008
 Cum= 33056
 PSI
 Ref= 5/2008
 Cum= 44644

MCF/BBL
 Ref= 5/2008
 Cum= 0



HWM Gas
 Gas, Mctf/mo 10000
 MCFPD 10000
 Water, bbl/day 10000

Year 00 01 02 03 04 05 06 07 08 09 10 11



Gas, Mcf/mo
 Qual= LVIEW
 Ref= 5/2008
 Cum= 1912586
 Rem= 2088283
 EUR= 4000849
 Yrs= 49.828
 Qref= 19067.4
 De= 14.878237
 Dmin= 7.000
 b= 0.500000
 Qab= 300.0

MCFPD
 Qual= LVIEW
 Ref= 5/2008
 Cum= 1938935
 Rem= 2094954
 EUR= 4033889
 Yrs= 49.828
 Qref= 626.9
 De= 14.878237
 Dmin= 7.000
 b= 0.500000
 Qab= 9.9

Water, bbl/d
 Ref= 5/2008
 Cum= 85885

PSI
 Ref= 5/2008
 Cum= 32786

MCF/BBL
 Ref= 5/2008
 Cum= 0

MCF/BBL 10 1 0.1 0.01 0.001

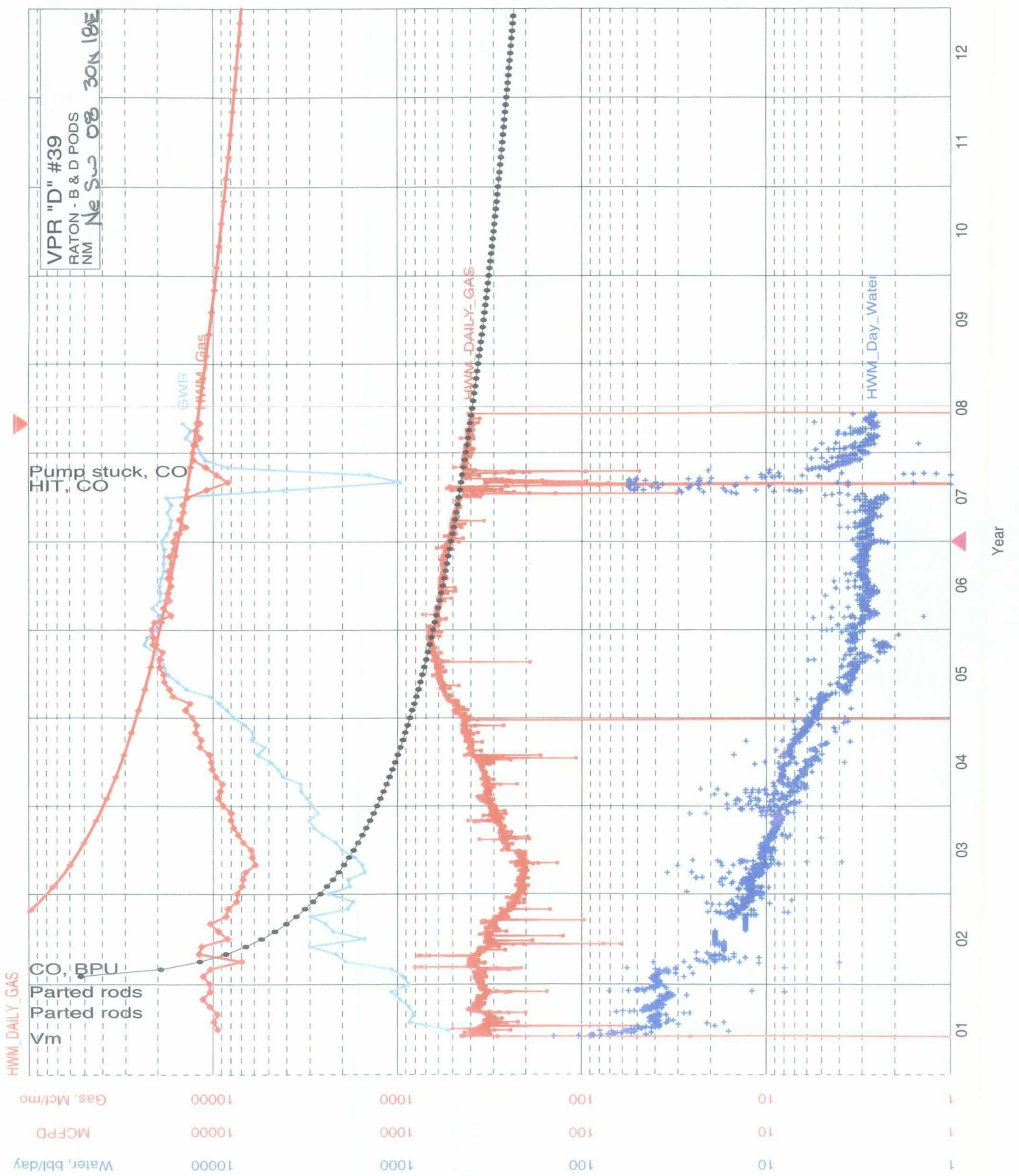
VPR "D" #29
 RATON - B & D PODS
 NM SW Ne 36 3N17E

HWM Gas

Gas, Mcf/mo 10000
 MCFPD 10000
 Water, bbl/day 10000
 1000
 100
 10

Year

01 02 03 04 05 06 07 08 09 10 11 12



MCF/BBL 100 10 1 0.1 0.01

Year