

PAUL BACA PROFESSIONAL COURT REPORTERS

# **OIL CONSERVTIONS DIVISION**

**CASE #: 14178**

**EXHIBIT  
4-A**

**Jones, William V., EMNRD**

**From:** Gum, Tim, EMNRD  
**Sent:** Tuesday, July 08, 2008 8:05 AM  
**To:** Jones, William V., EMNRD  
**Subject:** FW: Picks for top Capitan Reef 15-21s-27e  
**Importance:** High

Will,

Here are the wells I left you a phone message about.

Still need to talk with you.

TWG

**From:** Kautz, Paul, EMNRD  
**Sent:** Wednesday, July 02, 2008 2:00 PM  
**To:** Gum, Tim, EMNRD  
**Subject:** Picks for top Capitan Reef 15-21s-27e  
**Importance:** High

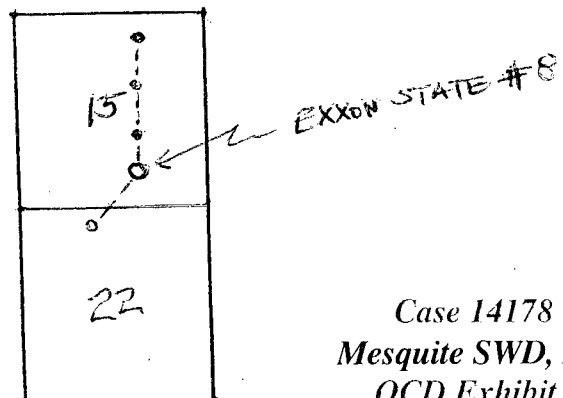
Tim

These are my picks for the top Capitan Reef.

30-015-32718	776'	B/15	3302 GL ✓	← NOT INCLUDED IN X-SECTION
30-015-21167	793'	E/15	3297 GL	
30-015-21492	754'	G/15	3300 GL ✓	
30-015-31877	705'	J/15	3284 GL ✓	

Paul Kautz

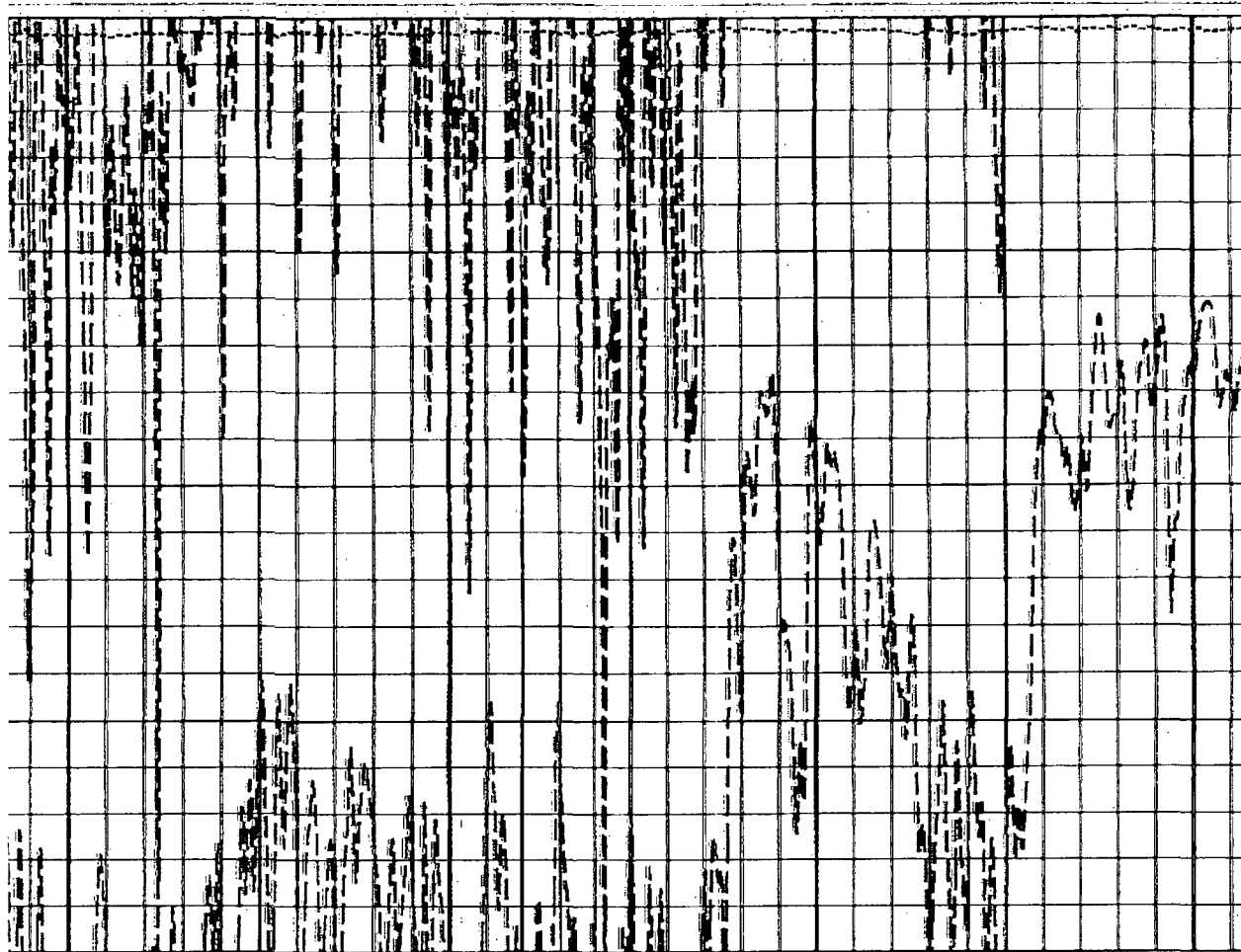
SHOWS REEF STRUCTURE  
 RISING TO THE SOUTH BEFORE DROP INTO SEC 22  
 (EXXON STATE #8 IS HIGH ON STRUCTURE)



Case 14178  
 Mesquite SWD, Inc.  
 OCD Exhibit 4-A

9/12/2008

30-015-32718  
UNIT B OF SEC 15  
332' GL



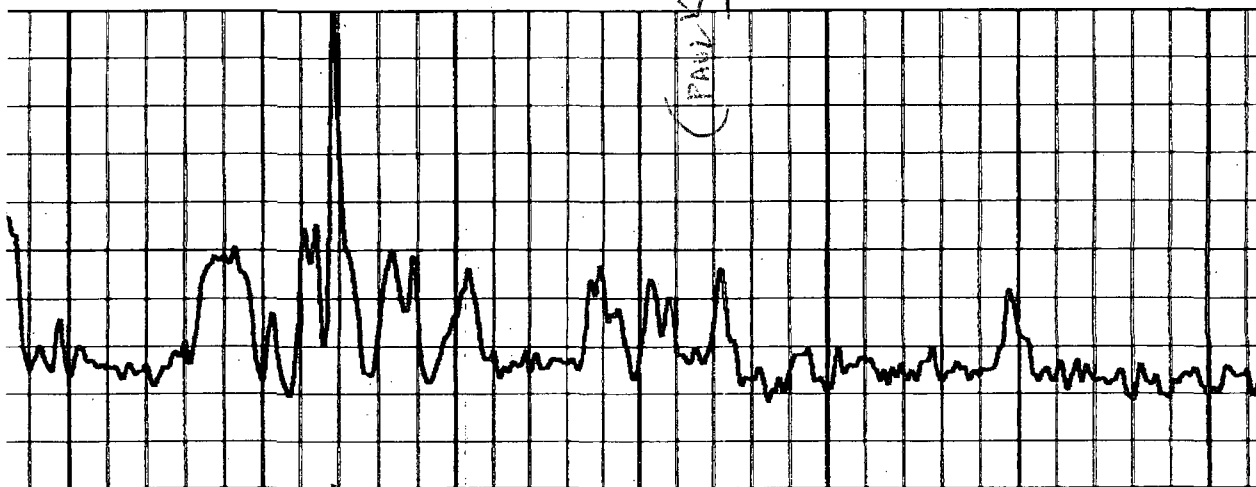
600

700

800

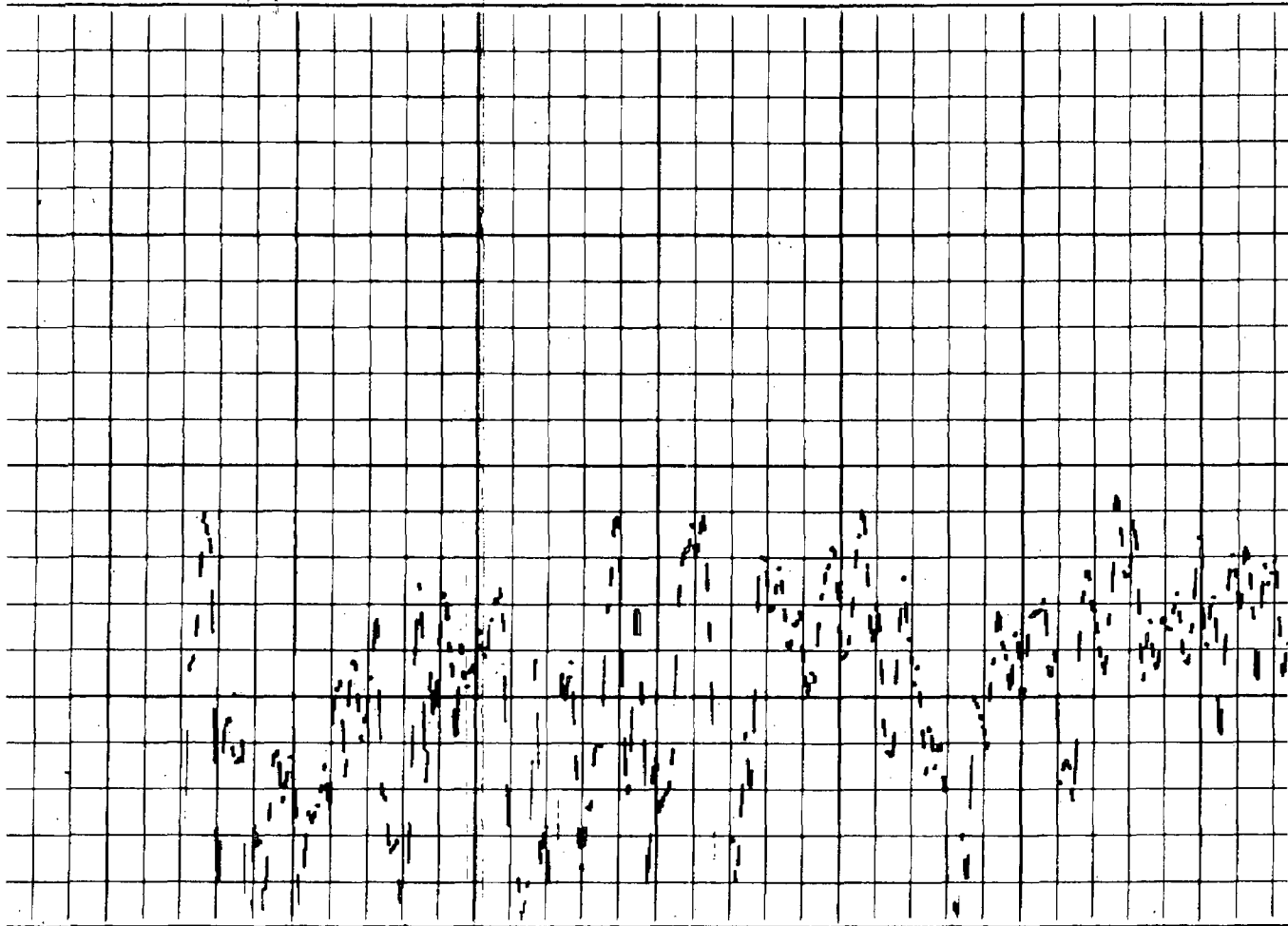
900

(PAUL KAUTZ)  
- REEF



Case 14178  
Mesquite SWD, Inc.  
OCD Exhibit 4-B

30-015-21492  
UNIT G OF 15  
3300 GL



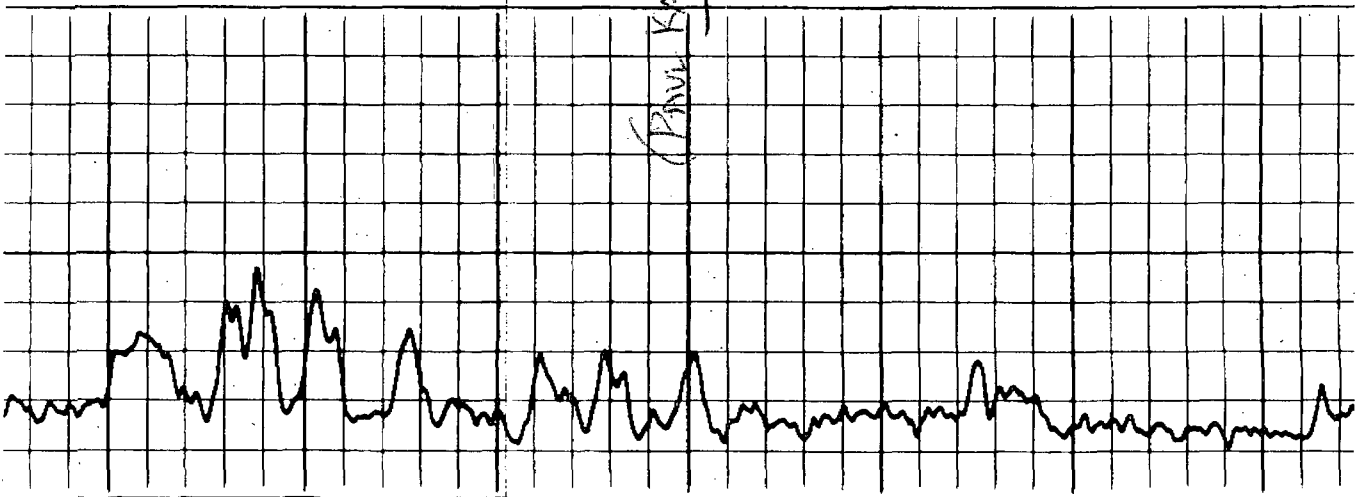
0600

0700

0800

0900

(PAUL KAUTZ)  
- REEF



ESPERANTA 15 STATE

COM #1

J-15-215-27E

30-015-31877

12/16/01

2232 FSL/1980 FEL

COMPENSATED  
NEUTRON

(8 5/8" O 2615)

TRIVERS  
CAPTAIN  
TOP

Case 14178  
Mesquite SWD, Inc.  
OCD Exhibit 4-D

BLACK WARRIOR WIRELINE

EXXON State No. 8

30-015-22055

GR/CCL/COMPENSATED  
NEUTRON

0-15-215-27E

3/3/08

GAMMA RAY

CASING  
COLLAR

250

300

350

400

450

500

550

600

650

A

B

C

OPEN HOLE

692  
TOTAL  
DEPTH

581'  
Bottom Casing (5 1/2")

SANDSTONE POROSITY

LIMESTONE POROSITY

Case 14178  
Mesquite SWD, Inc.  
OCD Exhibit 4-E

Gamma Ray

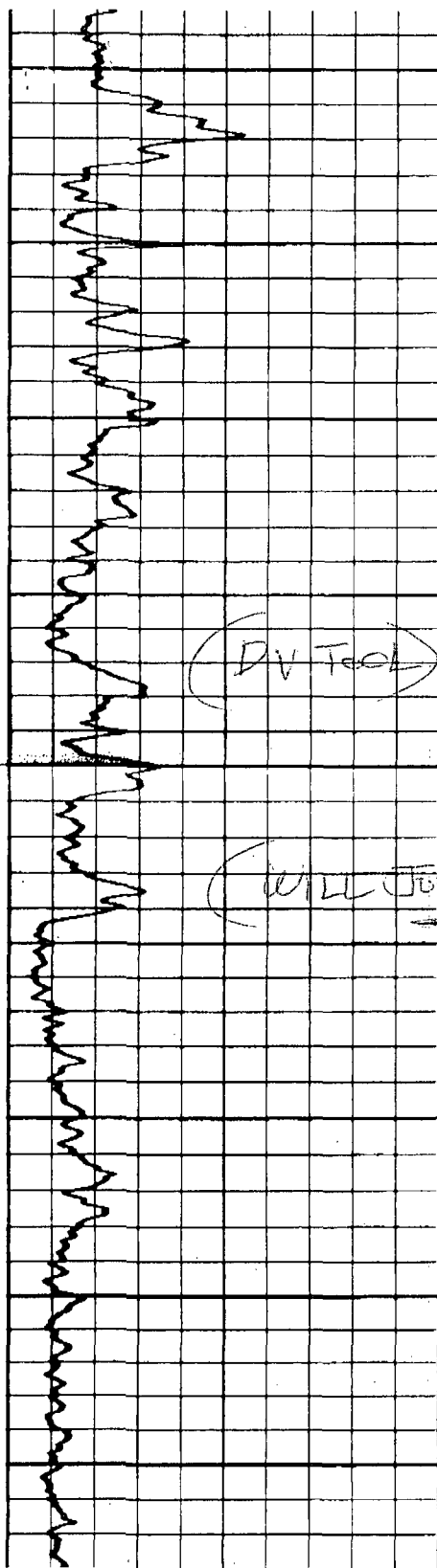
Sandstone Porosity

Limestone Porosity

0 Gamma Ray (GAPI) 100 0  
100 BU Gamma Ray (GAPI) 200 5 30  
70

Limestone Porosity (pu)

Backup Limestone Porosity (pu)



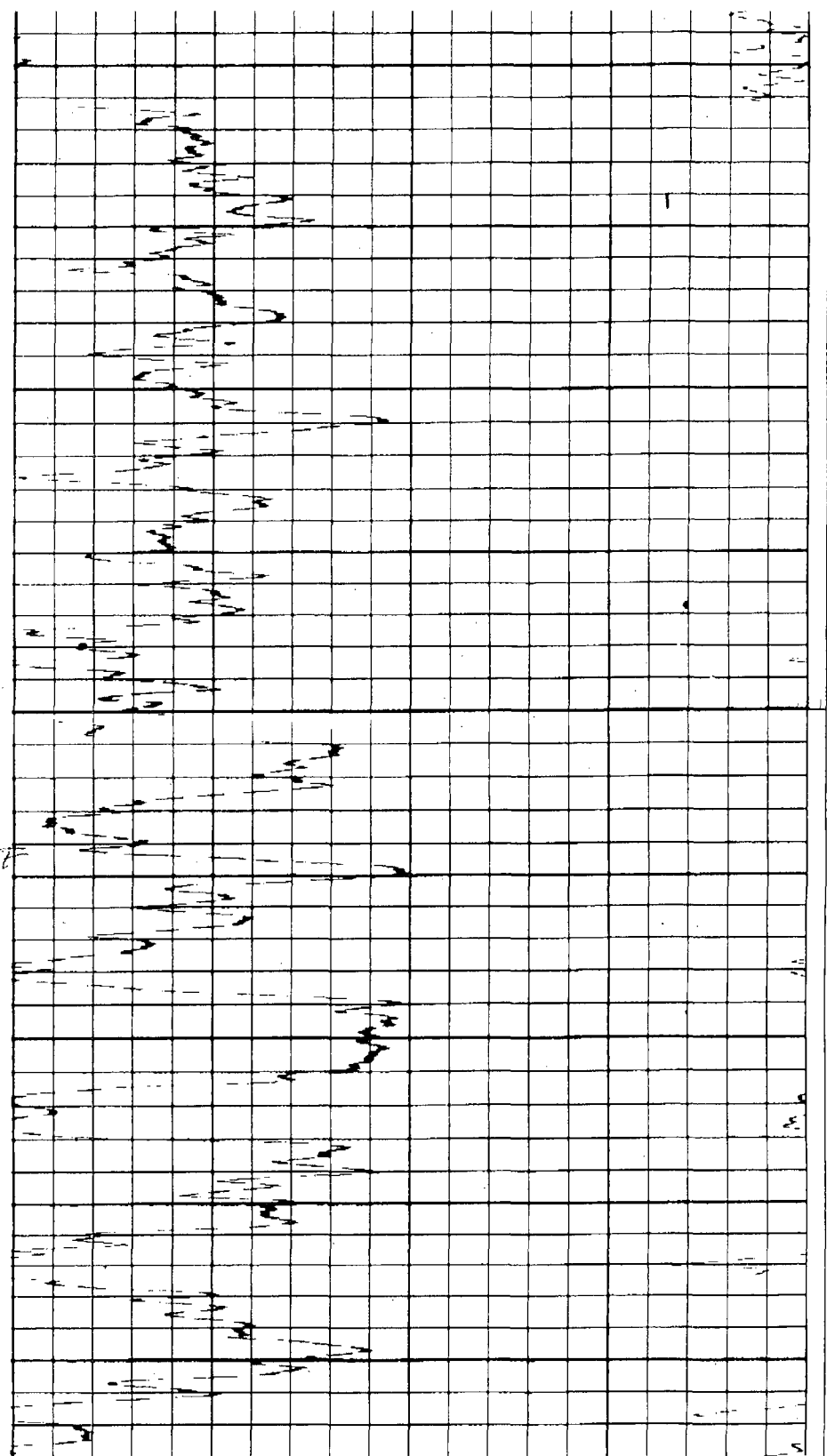
0600

0700

0800

0900

1000



30-015-21263

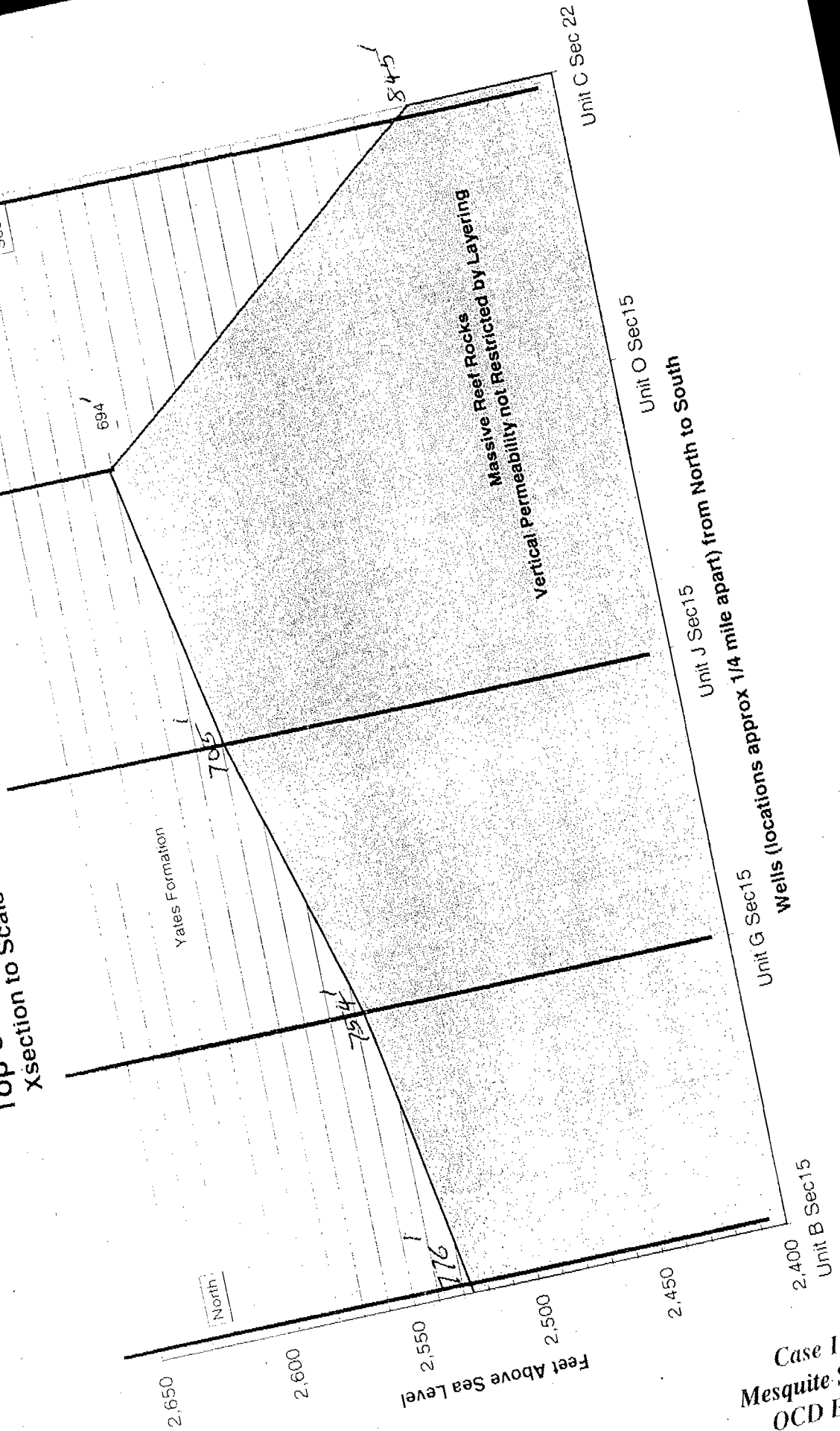
UNIT C OF SEC 22

GL=3303'

DV TOOL 767'  
CEMENT TOP 2550' CBL 11/13/74

Case 14178  
Mesquite SWD, Inc.  
OCD Exhibit 4-F

**Top of Massive Carbonate Reef Complex**  
 Exxon State #8  
 Xsection to Scale Looking East (North to South)





# Delaware Basin Stratigraphy

