



552

ConocoPhillips
San Juan Business Unit
PO Box 4289
Farmington, NM 87499-4289
February 27, 2009

2009 MAR 12 PM 1:22
Burlington Resources Oil & Gas Co LP
"An affiliate of ConocoPhillips Company"

Bureau of Land Management
Farmington Resource Area
1235 La Plata Highway
Farmington, NM 87401

Oil Conservation Division
State of New Mexico
1220 S. Saint Francis Drive
Santa Fe, NM 87505

Re: 2009 Plan of Development
SAN JUAN 29-4 UNIT 14-08-001-1055
RIO ARriba COUNTY, NEW MEXICO

Ladies and Gentlemen:

The following Participating Areas currently exist in the SAN JUAN 29-4 UNIT:

FORMATION	EXPANSION	EFFECTIVE DATE
PICTURED CLIFFS	008	01-NOV-05
MESAVERDE	004	01-AUG-78

The 2008 Plan of Development (or amendments thereto) provided for no wells to be drilled during 2008.

Pursuant to Section 10 of the SAN JUAN 29-4 UNIT Agreement, Burlington Resources Oil & Gas Company LP, as Unit Operator, hereby submits the 2009 Plan of Development as follows:

There are not any new drills or recompletions planned at this time during 2009.

The working interest owners are being furnished a copy of this letter and enclosed map. Burlington, as Unit Operator, will drill any offset wells required to prevent drainage of unitized substances and any other wells deemed necessary by the working interest owners or Unit Operator.

In accordance to Section 10 of the Unit Agreement, please provide your approvals by executing and returning a copy of the attached approval page to the undersigned.

Please contact me at (505) 326-9749 if there are any questions regarding this letter.

Sincerely,

Ben Malone
Land Supervisor, SJBU SE

BM/pml

xc: San Juan 29-4 Unit 3.0 (2009)
San Juan 29-4 Unit Working Interest Owners

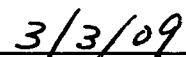
SAN JUAN 29-4 UNIT
2009 PLAN OF DEVELOPMENT APPROVALS

Bureau of Land Management

Date



New Mexico Oil Conservation Division



Date

SAN JUAN 29-4 UNIT
2009 PLAN OF DEVELOPMENT

**WORKING INTEREST OWNERS
SAN JUAN 29-4 UNIT**

BURLINGTON RESOURCES OIL & GAS COMPANY LP

DUGAN PRODUCTION COMPANY

JABCO LLP

KATHLEEN QUINN

LANGDON D HARRISON REVOC TRUST

MAR OIL & GAS CORPORATION

NAVATEX ENERGY LP

PROVIDENCE MINERALS LLC

RIO ARIBAGAS LTD

RUTH ZIMMERMAN TRUST

THOMAS P TINNIN

TINMIL A NM LLC

XTO ENERGY INC

San Juan 29-4 Unit Wells Status as of 2-8-09

Well Name	Resv Name	Sec	Twn	Twn Dir	Rng	Rng Dir	ST	Prod Stat	Api Well Code	MMS Prod Interval	MMS Lease Agr Number	Lse ID	Oper ID	Compl Dt	Int Prod Dt	1st Sale Dt
SAN JUAN 29-4 #18 MV	BLANCO:MESAVERDE	33	29	N	4	W	NM	11	300390749900S01	S01	8910010550	A728829	216600	12/8/1959	6/5/1960	6/5/1960
SAN JUAN 29-4 #201 FR	BASIN CB:FRUITLAND COAL	31	29	N	4	W	NM	11	300392537200C02	C02	NMSF079893A	A723602	216600	9/21/1994	6/15/1995	6/15/1995
SAN JUAN 29-4 #201 PC	GOBERNADOR:PICTURED CLIF	31	29	N	4	W	NM	11	300392537200C01	C01	891001055A	A728830	216600	9/21/1994	6/15/1995	6/15/1995
SAN JUAN 29-4 #21 MV	BLANCO:MESAVERDE	5	29	N	4	W	NM	11	300392145300D01	D01	8910010550	A728829	216600	7/5/1978	11/28/1979	11/28/1979
SAN JUAN 29-4 #21 PC	BLANCO EAST:PICTURED CLI	5	29	N	4	W	NM	41	300392145300D02	D02	891001055A	A728830	216600	7/5/1978	5/1/1980	5/1/1980
SAN JUAN 29-4 #24 GL	UNK:GALLUP	8	29	N	4	W	NM	41	300392284400D01	D01	NMSF079757A	A722969	216600	11/12/1982	5/1/1984	5/1/1984
SAN JUAN 29-4 #24 PC	BLANCO EAST:PICTURED CLI	8	29	N	4	W	NM	11	300392284400D02	D02	891001055A	A728830	216600	11/12/1982	5/24/1984	5/24/1984
SAN JUAN 29-4 #25 PC	GOBERNADOR:PICTURED CLIF	30	29	N	4	W	NM	11	300392775300S01	S01	891001055A	A728830	216600	10/26/2005	11/3/2005	11/3/2005
SAN JUAN 29-4 NP #200	BASIN CB:FRUITLAND COAL	30	29	N	4	W	NM	11	300392528800C02	C02	NMSF079893A	A723601	216600	10/20/1993	1/27/1994	1/27/1994
SAN JUAN 29-4 NP #200 PC	GOBERNADOR:PICTURED CLIF	30	29	N	4	W	NM	11	300392528800C01	C01	NMSF079893A	A720974	216600	10/20/1993	1/27/1994	1/27/1994

61 Temp Abandoned
71 Perm Abandoned Well
82 Drilling (Developmental)

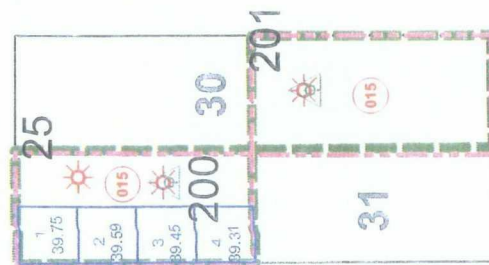
Prod Stat: 11 Flowing Well
21 Pumping Well
41 Shut-in

San Juan 29-4 Unit

R4W



T 29 N



BURLINGTON
RESOURCES
Inventory Management
San Juan Business Unit
Farmington, New Mexico

