



RECEIVED

2009 February 27 19 28

418

ConocoPhillips
San Juan Business Unit
P.O. Box 4289
Farmington, NM 87499-4289

Bureau of Land Management
Farmington Resource Area
1235 La Plata Highway
Farmington, NM 87401

Commissioner of Public Lands
State of New Mexico
P. O. Box 1148
Santa Fe, NM 87501-1148

Oil Conservation Division
State of New Mexico
1220 S. Saint Francis Drive
Santa Fe, NM 87505

RE: **2009 Plan of Development
San Juan 29-5 Unit #14-08-001-437
Rio Arriba County, New Mexico**

Ladies and Gentlemen:

The following Participating Areas currently exist in the SAN JUAN 29-5 UNIT:

FORMATION	EXPANSION	EFFECTIVE DATE
FRUITLAND COAL	006	01-DEC-06
PICTURED CLIFFS	009	01-JAN-02
MESAVERDE	025	01-OCT-85
DAKOTA	014	01-FEB-99

The 2008 Plan of Development (or amendments thereto) provided for the following activity:

Well Name/Number	Dedicated Acreage	Formation	Status
SAN JUAN 29-5 UNIT COM 92*	E/2 23-29N-5W	MESAVERDE NEW DRILL SINGLE	CARRYOVER
SAN JUAN 29-5 UNIT 6N	W/2 27-29N-5W	MESAVERDE/DAKOTA NEW DRILL COMMINGLE	COMPLETED
SAN JUAN 29-5 UNIT 23B	E/2 16-29N-5W	MESAVERDE/DAKOTA NEW DRILL COMMINGLE	COMPLETED
SAN JUAN 29-5 UNIT 39B	W/2 23-29N-5W	MESAVERDE/DAKOTA NEW DRILL COMMINGLE	CANCELLED
SAN JUAN 29-5 UNIT 77M	W/2 26-29N-5W	MESAVERDE/DAKOTA NEW DRILL COMMINGLE	CARRYOVER
SAN JUAN 29-5 UNIT 88M	E/2 34-29N-5W	MESAVERDE/DAKOTA NEW DRILL COMMINGLE	CARRYOVER
SAN JUAN 29-5 UNIT 90N	W/2 35-29N-5W	MESAVERDE/DAKOTA NEW DRILL COMMINGLE	CARRYOVER

* Well to be drilled and completed by Synergy Operating LLC under an extension of a Designation of Agent granted by ConocoPhillips Company as unit operator.

Pursuant to Section 10 of the San Juan 29-5 Unit Agreement, ConocoPhillips Company, as Unit Operator, hereby submits the 2009 Plan of Development as follows:

Well Name/Number	Dedication	Formation	Type
SAN JUAN 29-5 UNIT 51	W/2 19-29N-5W	FRUITLAND COAL /PICTURED CLIFFS RECOMPLETE	COMMINGLE
SAN JUAN 29-5 UNIT COM 92*	E/2 23-29N-5W	MESAVERDE NEW DRILL	SINGLE

SAN JUAN 29-5 UNIT
2009 PLAN OF DEVELOPMENT

SAN JUAN 29-5 UNIT 234	SW/4 08-29N-5W	BARKER CREEK PARADOX NEW DRILL	SINGLE
SAN JUAN 29-5 UNIT 6N	W/2 27-29N-5W	MESAVERDE/DAKOTA NEW DRILL	COMMINGLE
SAN JUAN 29-5 UNIT 23B	E/2 16-29N-5W	MESAVERDE/DAKOTA NEW DRILL	COMMINGLE
SAN JUAN 29-5 UNIT 39B	W/2 23-29N-5W	MESAVERDE/DAKOTA NEW DRILL	COMMINGLE
SAN JUAN 29-5 UNIT 77M	W/2 26-29N-5W	MESAVERDE/DAKOTA NEW DRILL	COMMINGLE
SAN JUAN 29-5 UNIT 88M	E/2 34-29N-5W	MESAVERDE/DAKOTA NEW DRILL	COMMINGLE
SAN JUAN 29-5 UNIT 90N	W/2 35-29N-5W	MESAVERDE/DAKOTA NEW DRILL	COMMINGLE
SAN JUAN 29-5 UNIT 235	SW/4 15-29N-5W	FRUITLAND COAL/PICTURED CLIFFS NEW DRILL	COMMINGLE
SAN JUAN 29-5 UNIT 235S	NW/4 15-29N-5W	FRUITLAND COAL/PICTURED CLIFFS NEW DRILL	COMMINGLE

* Well to be drilled and completed by Synergy Operating LLC under an extension of a Designation of Agent granted by ConocoPhillips Company as unit operator.

The working interest owners are being furnished a copy of this letter, well status listing and enclosed map. ConocoPhillips, as Unit Operator, will drill any offset wells required to prevent drainage of unitized substances and any other wells deemed necessary by the working interest owners or Unit Operator.

In accordance to Section 10 of the Unit Agreement, please provide your approvals by executing and returning a copy of this letter to the undersigned.

Please contact me at (505) 326-9749 if there are any questions regarding this letter.

Sincerely,



Ben Malone
Land Supervisor, SJBU SE

BM/vw

xc: San Juan 29-5 Unit, 3.0 (2009)
San Juan 29-5 Unit Working Interest Owners

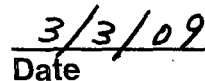
SAN JUAN 29-5 UNIT
2009 PLAN OF DEVELOPMENT APPROVALS

Bureau of Land Management

Date



New Mexico Oil Conservation Division


Date

New Mexico Commissioner of Public Lands

Date

***WORKING INTEREST OWNERS
SAN JUAN 29-5 UNIT***

BP AMERICA PRODUCTION COMPANY

BURLINGTON RESOURCES O&G CO LP

CHARLES W GAY

CONOCOPHILLIPS COMPANY

J&M RAYMOND LTD

LORRAYN GAY HACKER

MCELVAIN OIL COMPANY

PHILLIPS SAN JUAN LTD PARTNERSHIP

PHILLIPS-NEW MEXICO PARTNERS, L.P.

SAN JUAN BASIN PARTNERSHIP

SYNERGY OPERATING LLC

T H MCELVAIN OIL & GAS LIMITED

TAMACAM LLC

VAUGHAN-MCELVAIN ENERGY INC

WILLIAMS PRODUCTION COMPANY

San Juan 29-5 Unit Wells Status as of 2-8-09

Well Name	Resv Name	Sec	Twn	Rng	Dir	Rng	Dir	ST	Prod Stat	Api Well Code	MMS Prod Interval	MMS Lease Agr Number	Lee ID	Oper ID	Compl Dt	Int Prod Dt	1st Sale Dt
SAN JUAN 29-5 #100 MV	BLANCO: MESASVERDE	25	29	N	5	W	NM	41	300392253400D01	D01	NMNSF078917	A650141	12001				
SAN JUAN 29-5 #101 PC	GOBERNADOR: PICTURED CLIFF	25	29	N	5	W	NM	41	300392253400D02	D02	891000437A	A650108	12001				
SAN JUAN 29-5 #101 MV	BLANCO: MESASVERDE	26	29	N	5	W	NM	11	300392248400C01	C01	8910004370	A650111	12001		6/23/1981		
SAN JUAN 29-5 #101 PC	GOBERNADOR: PICTURED CLIFF	26	29	N	5	W	NM	11	300392248400C02	C02	NMNSF078917	A650142	12001		6/30/1981		
SAN JUAN 29-5 #102 PC	GOBERNADOR: PICTURED CLIFF	9	29	N	5	W	NM	11	300392246800S01	S01	891000437A	A650108	12001				
SAN JUAN 29-5 #103 PC	GOBERNADOR: PICTURED CLIFF	4	29	N	5	W	NM	11	300392246700S01	S01	NMNSF081114	A650144	12001				
SAN JUAN 29-5 #104 MV	BLANCO: MESASVERDE	10	29	N	5	W	NM	41	300392248900D01	D01	SCR421	A650143	12001				
SAN JUAN 29-5 #104 PC	GOBERNADOR: PICTURED CLIFF	10	29	N	5	W	NM	11	300392248900D02	D02	891000437A	A650108	12001				
SAN JUAN 29-5 #106 MV	BLANCO: MESASVERDE	25	29	N	5	W	NM	11	300392303300C01	C01	8910004370	A650111	12001				
SAN JUAN 29-5 #106 PC	GOBERNADOR: PICTURED CLIFF	25	29	N	5	W	NM	11	300392303300C02	C02	891000437A	A650108	12001				
SAN JUAN 29-5 #107 PC	BLANCO: MESASVERDE	2	29	N	5	W	NM	11	300392365900C01	C01	8910004370	A650111	12001				
SAN JUAN 29-5 #107 PC	GOBERNADOR: PICTURED CLIFF	2	29	N	5	W	NM	11	300392365900C02	C02	891000437A	A650108	12001				
SAN JUAN 29-5 #10A MV	BLANCO: MESASVERDE	16	29	N	5	W	NM	11	30039257200S01	S01	8910004370	A650111	12001				
SAN JUAN 29-5 #10B MV	BLANCO: MESASVERDE	16	29	N	5	W	NM	11	300392771600S01	S01	8910004370	A650111	12001				
SAN JUAN 29-5 #10C MV	BLANCO: MESASVERDE	16	29	N	5	W	NM	11	300392968100S01	S01	8910004370	A650111	12001				
SAN JUAN 29-5 #11A MV	BLANCO: MESASVERDE	19	29	N	5	W	NM	11	300390761600S01	S01	8910004370	A650111	12001				
SAN JUAN 29-5 #11 MV	BLANCO: MESASVERDE	19	29	N	5	W	NM	11	300392156700S01	S01	8910004370	A650111	12001				
SAN JUAN 29-5 #12A MV	BLANCO: MESASVERDE	30	29	N	5	W	NM	11	300390757500S01	S01	8910004370	A650111	12001				
SAN JUAN 29-5 #12 MV	BLANCO: MESASVERDE	30	29	N	5	W	NM	11	30039215900S01	S01	8910004370	A650111	12001				
SAN JUAN 29-5 #12 MV	BLANCO: MESASVERDE	30	29	N	5	W	NM	11	300390752100S01	S01	8910004370	A650111	12001				
SAN JUAN 29-5 #13A MV	BLANCO: MESASVERDE	30	29	N	5	W	NM	11	30039215600S01	S01	8910004370	A650111	12001				
SAN JUAN 29-5 #13F DK	BASIN: DAKOTA	30	29	N	5	W	NM	11	300392945100C01	C01	NMNM116441	A650265	12001				
SAN JUAN 29-5 #13F MV	BLANCO: MESASVERDE	30	29	N	5	W	NM	11	300392945100C02	C02	8910004370	A650108	12001				
SAN JUAN 29-5 #13M DK	BASIN: DAKOTA	30	29	N	5	W	NM	11	30039265800C01	C01	NMNM116441	A650265	12001				
SAN JUAN 29-5 #13M MV	BLANCO: MESASVERDE	30	29	N	5	W	NM	11	30039265800C02	C02	8910004370	A650111	12001				
SAN JUAN 29-5 #13 MV	BLANCO: MESASVERDE	30	29	N	5	W	NM	11	300390753800S01	S01	8910004370	A650111	12001				
SAN JUAN 29-5 #14F DK	BASIN: DAKOTA	27	29	N	5	W	NM	11	300392945100C01	C01	8910004370	A650111	12001				
SAN JUAN 29-5 #14F MV	BLANCO: MESASVERDE	27	29	N	5	W	NM	11	300392945100C02	C02	8910004370	A650265	12001				
SAN JUAN 29-5 #14G DK	BASIN: DAKOTA	27	29	N	5	W	NM	11	300392945100C01	C01	8910004370	A650111	12001				
SAN JUAN 29-5 #14G MV	BLANCO: MESASVERDE	27	29	N	5	W	NM	11	300392945100C02	C02	8910004370	A650265	12001				
SAN JUAN 29-5 #14M DK	BASIN: DAKOTA	27	29	N	5	W	NM	11	300392945100C01	C01	8910004370	A650111	12001				
SAN JUAN 29-5 #14M MV	BLANCO: MESASVERDE	27	29	N	5	W	NM	11	300392945100C02	C02	8910004370	A650265	12001				
SAN JUAN 29-5 #14 MV	BLANCO: MESASVERDE	27	29	N	5	W	NM	11	300392945100C01	C01	8910004370	A650111	12001				
SAN JUAN 29-5 #15 MV	BLANCO: MESASVERDE	20	29	N	5	W	NM	11	300390754600S01	S01	8910004370	A650111	12001				
SAN JUAN 29-5 #16 MV	BLANCO: MESASVERDE	21	29	N	5	W	NM	11	300390754600S01	S01	8910004370	A650111	12001				
SAN JUAN 29-5 #17A MV	BLANCO: MESASVERDE	5	29	N	5	W	NM	11	300392133700S01	S01	8910004370	A650111	12001				
SAN JUAN 29-5 #17B MV	BLANCO: MESASVERDE	5	29	N	5	W	NM	11	300392133700S01	S01	8910004370	A650111	12001				
SAN JUAN 29-5 #17C MV	BLANCO: MESASVERDE	5	29	N	5	W	NM	11	30039294200S01	S01	8910004370	A650111	12001				
SAN JUAN 29-5 #17 MV	BLANCO: MESASVERDE	5	29	N	5	W	NM	11	300392946500S01	S01	8910004370	A650111	12001				
SAN JUAN 29-5 #18A MV	BLANCO: MESASVERDE	5	29	N	5	W	NM	11	30039070800S01	S01	8910004370	A650111	12001				
SAN JUAN 29-5 #18B MV	BLANCO: MESASVERDE	5	29	N	5	W	NM	11	300392133700S01	S01	8910004370	A650111	12001				
SAN JUAN 29-5 #18C MV	BLANCO: MESASVERDE	5	29	N	5	W	NM	11	300392778500S01	S01	8910004370	A650111	12001				
SAN JUAN 29-5 #18 MV	BLANCO: MESASVERDE	5	29	N	5	W	NM	11	300392921800S01	S01	8910004370	A650111	12001				
SAN JUAN 29-5 #19A MV	BLANCO: MESASVERDE	5	29	N	5	W	NM	11	300390769700S01	S01	8910004370	A650111	12001				
SAN JUAN 29-5 #19B MV	BLANCO: MESASVERDE	6	29	N	5	W	NM	11	300392133800S01	S01	8910004370	A650111	12001				
SAN JUAN 29-5 #19B MV	BLANCO: MESASVERDE	6	29	N	5	W	NM	11	300392920300S01	S01	8910004370	A650111	12001				
SAN JUAN 29-5 #201 FC	BASIN CB: FRUITLAND COAL	27	29	N	5	W	NM	11	300392497600S01	S01	8910004370	A650259	12001				
SAN JUAN 29-5 #203 FC	BASIN CB: FRUITLAND COAL	6	29	N	5	W	NM	11	300392435300S01	S01	NMNM011349	A650259	12001				
SAN JUAN 29-5 #20A MV	BLANCO: MESASVERDE	7	29	N	5	W	NM	11	300392134100S01	S01	8910004370	A650407	12001				
SAN JUAN 29-5 #20C MV	BLANCO: MESASVERDE	7	29	N	5	W	NM	11	300392134100S01	S01	8910004370	A650111	12001				
SAN JUAN 29-5 #20 MV	BLANCO: MESASVERDE	7	29	N	5	W	NM	11	300390764500S01	S01	8910004370	A650111	12001				
SAN JUAN 29-5 #21A MV	BLANCO: MESASVERDE	7	29	N	5	W	NM	11	300392460400S01	S01	8910004370	A650111	12001				
SAN JUAN 29-5 #213 FC	BASIN CB: FRUITLAND COAL	22	29	N	5	W	NM	11	300392493000S01	S01	8910004370	A650407	12001				
SAN JUAN 29-5 #214 FC	BASIN CB: FRUITLAND COAL	27	29	N	5	W	NM	11	300392493000S01	S01	NMNM011349A	A650219	12001				
SAN JUAN 29-5 #216 FC	BASIN CB: FRUITLAND COAL	33	29	N	5	W	NM	11	300392473100S01	S01	891000437X	A650174	12001				
SAN JUAN 29-5 #217 FC	BASIN CB: FRUITLAND COAL	34	29	N	5	W	NM	11	300392497700S01	S01	NMNM011350A	A650260	12001				
SAN JUAN 29-5 #218 FC	BASIN CB: FRUITLAND COAL	34	29	N	5	W	NM	11	300392478200S01	S01	NMNM011350A	A650260	12001				
SAN JUAN 29-5 #219 FC	BASIN CB: FRUITLAND COAL	4	29	N	5	W	NM	11	300392508100S01	S01	NMNM09489	A650261	12001				
SAN JUAN 29-5 #21A MV	BLANCO: MESASVERDE	8	29	N	5	W	NM	11	300392134200S01	S01	891000437C	A650407	12001				
SAN JUAN 29-5 #21B MV	BLANCO: MESASVERDE	8	29	N	5	W	NM	11	300392778400S01	S01	8910004370	A650111	12001				
SAN JUAN 29-5 #21C MV	BLANCO: MESASVERDE	8	29	N	5	W	NM	11	300392955300S01	S01	8910004370	A650111	12001				
SAN JUAN 29-5 #21 MV	BLANCO: MESASVERDE	8	29	N	5	W	NM	11	300390766700S01	S01	8910004370	A650111	12001				
SAN JUAN 29-5 #223 FC	BASIN CB: FRUITLAND COAL	33	29	N	5	W	NM	11	300392493000S01	S01	891000437C	A650407	12001				

Prod Stat: 11 Flowing Well
21 Pumping Well
41 Shut-In

61 Temp Abandoned
71 Perm Abandoned Well
82 Drilling (Developmental)
PW - Pressure Monitoring

San Juan 29-5 Unit Wells Status as of 2-8-09

Well Name	Reas Name	Sec	Twn	Dir	Rng	Dir	Rng	Dir	ST	Prod Stat	Api Well Code	MMS Prod Interval	MMS Lease Agr Number	Use ID	Oper ID	Compl Dt	Int Prod Dt	1st Sale Dt
SAN JUAN 29-5 #225 FC	BASIN CB: FRUITLAND COAL	6	29	N	5	W	NM	11	NM	11	300392508600S01	S01	891000437C	A650407	12001			
SAN JUAN 29-5 #226 FC	BASIN CB: FRUITLAND COAL	7	29	N	5	W	NM	11	NM	11	300392507600S01	S01	891000437C	A650407	12001		4/14/1993	
SAN JUAN 29-5 #22A MV	BLANCO: MESAVARDE	8	29	N	5	W	NM	11	NM	11	300392134300S01	S01	8910004370	A650111	12001			
SAN JUAN 29-5 #22B MV	BLANCO: MESAVARDE	8	29	N	5	W	NM	11	NM	11	300392948800S01	S01	8910004370	A650111	12001	7/31/2006	8/31/2006	8/31/2006
SAN JUAN 29-5 #22C MV	BLANCO: MESAVARDE	8	29	N	5	W	NM	11	NM	11	300392946400S01	S01	8910004370	A650111	12001	8/8/2006	9/12/2006	9/12/2006
SAN JUAN 29-5 #22D MV	BLANCO: MESAVARDE	8	29	N	5	W	NM	11	NM	11	300390765900S01	S01	8910004370	A650111	12001			
SAN JUAN 29-5 #230 FC	BASIN CB: FRUITLAND COAL	5	29	N	5	W	NM	11	NM	11	300392522600S01	S01	891000437C	A650407	12001		5/24/1993	
SAN JUAN 29-5 #231 FC	BASIN CB: FRUITLAND COAL	5	29	N	5	W	NM	11	NM	11	300392507500S01	S01	NMSF078642	A650329	12001		12/20/1993	
SAN JUAN 29-5 #23A MV	BLANCO: MESAVARDE	16	29	N	5	W	NM	11	NM	11	300392575300S01	S01	8910004370	A650111	12001	1/1/2009	1/26/2009	2/11/1998
SAN JUAN 29-5 #23B MV	BLANCO: MESAVARDE	16	29	N	5	W	NM	11	NM	11	300392504700S02	S01	8910004370	A650111	12001	11/10/2006	12/7/2006	12/7/2006
SAN JUAN 29-5 #23C MV	BLANCO: MESAVARDE	16	29	N	5	W	NM	11	NM	11	300392946400S01	S01	8910004370	A650111	12001			
SAN JUAN 29-5 #24A MV	BLANCO: MESAVARDE	16	29	N	5	W	NM	11	NM	11	300392946400S01	S01	8910004370	A650111	12001			
SAN JUAN 29-5 #24B MV	BLANCO: MESAVARDE	17	29	N	5	W	NM	11	NM	11	300392691000S01	S01	8910004370	A650111	12001		8/18/2004	3/18/2004
SAN JUAN 29-5 #24 FC	BASIN CB: FRUITLAND COAL	17	29	N	5	W	NM	11	NM	11	300390763700C02	C02	NMSF078281	A708994	12001			
SAN JUAN 29-5 #25A MV	BLANCO: MESAVARDE	18	29	N	5	W	NM	11	NM	11	300392155600S01	S01	8910004370	A650111	12001			
SAN JUAN 29-5 #25B MV	BLANCO: MESAVARDE	18	29	N	5	W	NM	11	NM	11	300392155600S01	S01	8910004370	A650111	12001			
SAN JUAN 29-5 #25 FC	LOS PINOS N: FRUITLAND	18	29	N	5	W	NM	11	NM	11	300390762500C02	C02	NMSF078281	A708913	12001	9/13/2006	9/13/2006	9/13/2006
SAN JUAN 29-5 #25 MV	BLANCO: MESAVARDE	18	29	N	5	W	NM	11	NM	11	300390762500C02	C02	NMSF078281	A708913	12001	6/9/2004	6/9/2004	
SAN JUAN 29-5 #26A FC	BASIN CB: FRUITLAND COAL	18	29	N	5	W	NM	11	NM	11	300392155500C01	C01	NMSF078277	A708909	12001	3/18/2006	3/18/2006	3/18/2006
SAN JUAN 29-5 #26A MV	BLANCO: MESAVARDE	18	29	N	5	W	NM	11	NM	11	300392155500C01	C01	8910004370	A650111	12001			
SAN JUAN 29-5 #26 FC	BASIN CB: FRUITLAND COAL	18	29	N	5	W	NM	11	NM	11	300390761400S02	S02	NMNM117655	A710939	12001	11/15/2006	1/4/2007	1/4/2007
SAN JUAN 29-5 #27A MV	BLANCO: MESAVARDE	19	29	N	5	W	NM	11	NM	11	300392155800S01	S01	8910004370	A650111	12001			
SAN JUAN 29-5 #27 MV	BLANCO: MESAVARDE	19	29	N	5	W	NM	11	NM	11	300390759700S01	S01	8910004370	A650111	12001			
SAN JUAN 29-5 #28 MV	BLANCO: MESAVARDE	20	29	N	5	W	NM	11	NM	11	300390756300S01	S01	8910004370	A650111	12001			
SAN JUAN 29-5 #30 MV	BLANCO: MESAVARDE	28	29	N	5	W	NM	11	NM	11	300390753200S01	S01	8910004370	A650111	12001			
SAN JUAN 29-5 #31 MV	BLANCO: MESAVARDE	29	29	N	5	W	NM	11	NM	11	300390754500S01	S01	8910004370	A650111	12001			
SAN JUAN 29-5 #32 DK	BASIN: DAKOTA	29	29	N	5	W	NM	11	NM	11	300390752400C01	C01	891000437B	A650265	12001			
SAN JUAN 29-5 #32E DK	BASIN: DAKOTA	29	29	N	5	W	NM	11	NM	11	300392753800C01	C01	891000437B	A650265	12001	6/24/2005	6/24/2005	6/24/2005
SAN JUAN 29-5 #32G DK	BASIN: DAKOTA	29	29	N	5	W	NM	11	NM	11	300392753800C02	C02	8910004370	A650111	12001	6/24/2005	6/24/2005	6/24/2005
SAN JUAN 29-5 #32G MV	BASIN: DAKOTA	29	29	N	5	W	NM	11	NM	11	300392753700C01	C01	891000437B	A650265	12001	7/28/2005	7/28/2005	7/28/2005
SAN JUAN 29-5 #33M DK	BASIN: DAKOTA	29	29	N	5	W	NM	11	NM	11	300392753700C02	C02	8910004370	A650111	12001	7/28/2005	7/28/2005	7/28/2005
SAN JUAN 29-5 #32M MV	BLANCO: MESAVARDE	29	29	N	5	W	NM	11	NM	11	300392581700C01	C01	891000437B	A650265	12001	2/23/1999	2/23/1999	
SAN JUAN 29-5 #34M MV	BLANCO: MESAVARDE	34	29	N	5	W	NM	11	NM	11	300390752400C02	C02	8910004370	A650111	12001	11/4/1999	12/15/1999	12/15/1999
SAN JUAN 29-5 #34 MV	BLANCO: MESAVARDE	34	29	N	5	W	NM	11	NM	11	300390762000S02	S02	8910004370	A650111	12001	1/10/2008	3/13/2008	3/13/2008
SAN JUAN 29-5 #34 MV	BLANCO: MESAVARDE	34	29	N	5	W	NM	11	NM	11	300390751500S01	S01	8910004370	A650111	12001	9/29/1956		9/29/1956
SAN JUAN 29-5 #34R DK	BASIN: DAKOTA	34	29	N	5	W	NM	61	NM	61	300392178800S01	S01	891000437B	A650265	12001	1/4/1996		
SAN JUAN 29-5 #34R MV	BLANCO: MESAVARDE	34	29	N	5	W	NM	11	NM	11	300392178800S02	S02	8910004370	A650111	12001	2/16/1996		
SAN JUAN 29-5 #35F DK	BASIN: DAKOTA	34	29	N	5	W	NM	41	NM	41	300393020700C01	C01	891000437B	A650265	12001	8/17/2007	9/4/2007	9/4/2007
SAN JUAN 29-5 #35F MV	BLANCO: MESAVARDE	34	29	N	5	W	NM	41	NM	41	300393020700C02	C02	8910004370	A650111	12001	8/17/2007	9/4/2007	9/4/2007
SAN JUAN 29-5 #35M MV	BLANCO: MESAVARDE	34	29	N	5	W	NM	11	NM	11	300393015500S02	C02	8910004370	A650111	12001	8/31/2007	9/19/2007	9/19/2007
SAN JUAN 29-5 #35 MV	BLANCO: MESAVARDE	34	29	N	5	W	NM	11	NM	11	300390748500S01	S01	8910004370	A650111	12001			
SAN JUAN 29-5 #35R DK	BASIN: DAKOTA	34	29	N	5	W	NM	61	NM	61	300392178900S01	S01	891000437B	A650265	12001	1/11/1996		
SAN JUAN 29-5 #35R MV	BLANCO: MESAVARDE	34	29	N	5	W	NM	11	NM	11	300392178900S02	S02	8910004370	A650265	12001	2/15/1996		
SAN JUAN 29-5 #36 MV	BLANCO: MESAVARDE	33	29	N	5	W	NM	11	NM	11	300390748600S01	S01	8910004370	A650111	12001			
SAN JUAN 29-5 #37A MV	BLANCO: MESAVARDE	31	29	N	5	W	NM	11	NM	11	300392267100S01	S01	8910004370	A650111	12001			
SAN JUAN 29-5 #37 MV	BLANCO: MESAVARDE	31	29	N	5	W	NM	11	NM	11	300390748300S01	S01	8910004370	A650111	12001			
SAN JUAN 29-5 #38 MV	BLANCO: MESAVARDE	32	29	N	5	W	NM	11	NM	11	300390747200S01	S01	8910004370	A650111	12001			
SAN JUAN 29-5 #39A MV	BLANCO: MESAVARDE	23	29	N	5	W	NM	11	NM	11	300392987500S01	S01	8910004370	A650111	12001	10/4/2007	12/12/2007	12/12/2007
SAN JUAN 29-5 #33 MV	BLANCO: MESAVARDE	23	29	N	5	W	NM	11	NM	11	300390757000S01	S01	8910004370	A650111	12001			
SAN JUAN 29-5 #40 MV	BLANCO: MESAVARDE	28	29	N	5	W	NM	11	NM	11	300390754000S01	S01	8910004370	A650111	12001	10/1/1958	10/1/1958	10/1/1958
SAN JUAN 29-5 #41A MV	BLANCO: MESAVARDE	31	29	N	5	W	NM	11	NM	11	300392703000S01	S01	8910004370	A650111	12001			
SAN JUAN 29-5 #41 MV	BLANCO: MESAVARDE	31	29	N	5	W	NM	11	NM	11	300390750600S01	S01	8910004370	A650111	12001			
SAN JUAN 29-5 #42 MV	BLANCO: MESAVARDE	32	29	N	5	W	NM	11	NM	11	300390749800S01	S01	8910004370	A650111	12001	7/29/1958		
SAN JUAN 29-5 #43 MV	BLANCO: MESAVARDE	22	29	N	5	W	NM	11	NM	11	300390756600S01	S01	8910004370	A650111	12001			
SAN JUAN 29-5 #45A MV	BLANCO: MESAVARDE	22	29	N	5	W	NM	11	NM	11	300392981700S01	S01	8910004370	A650111	12001	9/22/2006	12/21/2006	12/21/2006
SAN JUAN 29-5 #45F MV	BLANCO: MESAVARDE	22	29	N	5	W	NM	11	NM	11	300392786300S01	S01	8910004370	A650111	12001	9/30/2005	10/26/2005	10/26/2005
SAN JUAN 29-5 #45M MV	BLANCO: MESAVARDE	22	29	N	5	W	NM	11	NM	11	300392786900S01	S01	8910004370	A650111	12001	10/20/2005	10/20/2005	10/20/2005
SAN JUAN 29-5 #45 MV	BLANCO: MESAVARDE	22	29	N	5	W	NM	11	NM	11	300390759600C01	C01	8910004370	A650111	12001			
SAN JUAN 29-5 #45 PC	GOBERNADOR: PICTURED CLIFF	22	29	N	5	W	NM	11	NM	11	300390759600C02	C02	891000437A	A650108	12001	3/8/2000	3/8/2000	3/8/2000

Prod Stat: 11 Flowing Well
21 Pumping Well
41 Shut-in

61 Temp Abandoned
71 Perm Abandoned Well
82 Drilling (Developmental)
PM - Pressure Monitoring

San Juan 29-5 Unit Wells Status as of 2-8-09

Well Name	Resv Name	Sec	Twn	Twn Dir	Rng	Rng Dir	ST	Prod Stat	API Well Code	MMS Prod Interval	MMS Lease Agr	Use ID	Oper ID	Compl Dt	Int Prod Dt	1st Sale Dt
SAN JUAN 29-5 #46 MV	BLANCO: MESADERE	21	29	N	5	W	NM	11	30039075900001	S01	8910004370	A650111	12001			
SAN JUAN 29-5 #47A MV	BLANCO: MESADERE	4	29	N	5	W	NM	11	30039227260001	D01	8910004370	A650111	12001			
SAN JUAN 29-5 #47A PC	GOBERNADOR: PICTURED CLIFF	4	29	N	5	W	NM	11	30039227260002	D02	8910004370	A650108	12001			
SAN JUAN 29-5 #47 MV	BLANCO: MESADERE	4	29	N	5	W	NM	11	30039227260003	S01	8910004370	A650108	12001			
SAN JUAN 29-5 #48 MV	BLANCO: MESADERE	15	29	N	5	W	NM	11	30039227260004	S01	8910004370	A650111	12001	11/21/2006	12/18/2006	12/18/2006
SAN JUAN 29-5 #48B MV	BLANCO: MESADERE	15	29	N	5	W	NM	11	30039227260005	S01	8910004370	A650111	12001	9/5/2007	10/26/2006	
SAN JUAN 29-5 #48C MV	BLANCO: MESADERE	15	29	N	5	W	NM	11	30039227260006	S01	8910004370	A650111	12001	9/9/2006	12/18/2006	12/19/2006
SAN JUAN 29-5 #48 MV	BLANCO: MESADERE	15	29	N	5	W	NM	11	30039227260007	S01	8910004370	A650111	12001			
SAN JUAN 29-5 #49A MV	BLANCO: MESADERE	9	29	N	5	W	NM	11	30039076180001	S01	8910004370	A650111	12001		2/16/2001	2/16/2001
SAN JUAN 29-5 #49A PC	BLANCO: PICTURED CLIFFS	9	29	N	5	W	NM	11	30039076180002	C01	8910004370	A650111	12001		12/17/2001	12/17/2001
SAN JUAN 29-5 #49B MV	BLANCO: MESADERE	9	29	N	5	W	NM	11	30039227260001	S01	8910004370	A650111	12001	10/10/2007	11/14/2007	11/14/2007
SAN JUAN 29-5 #49 MV	BLANCO: MESADERE	9	29	N	5	W	NM	11	30039227260002	S01	8910004370	A650111	12001			
SAN JUAN 29-5 #4A MV	BLANCO: MESADERE	6	29	N	5	W	NM	11	30039213300001	S01	8910004370	A650111	12001	6/30/2006	8/22/2006	8/22/2006
SAN JUAN 29-5 #4B MV	BLANCO: MESADERE	6	29	N	5	W	NM	11	30039213300002	S01	8910004370	A650111	12001	6/23/2006	8/22/2006	8/22/2006
SAN JUAN 29-5 #4C MV	BLANCO: MESADERE	6	29	N	5	W	NM	11	30039213300003	S01	8910004370	A650111	12001			
SAN JUAN 29-5 #4 MV	BLANCO: MESADERE	6	29	N	5	W	NM	11	30039213300004	S01	8910004370	A650111	12001			
SAN JUAN 29-5 #51 DK	BASIN: DAKOTA	19	29	N	5	W	NM	41	30039202960001	S01	8910004370	A650265	12001			
SAN JUAN 29-5 #51F DK	BASIN: DAKOTA	19	29	N	5	W	NM	11	30039297120001	C01	8910004370	A650265	12001			
SAN JUAN 29-5 #51F MV	BLANCO: MESADERE	19	29	N	5	W	NM	11	30039297120002	C02	8910004370	A650265	12001	4/7/2006	5/1/2006	5/1/2006
SAN JUAN 29-5 #51M DK	BASIN: DAKOTA	19	29	N	5	W	NM	11	30039265620001	C01	8910004370	A650265	12001	4/4/2006	5/1/2006	5/1/2006
SAN JUAN 29-5 #51M MV	BLANCO: MESADERE	19	29	N	5	W	NM	11	30039265620002	C02	8910004370	A650265	12001	7/27/2001	7/27/2001	7/27/2001
SAN JUAN 29-5 #52 MV	BASIN: DAKOTA	29	29	N	5	W	NM	11	30039202960001	S01	8910004370	A650111	12001			
SAN JUAN 29-5 #52 DK	BASIN: DAKOTA	29	29	N	5	W	NM	11	30039202960002	S01	8910004370	A650265	12001			
SAN JUAN 29-5 #52F MV	BLANCO: MESADERE	29	29	N	5	W	NM	11	30039202960003	S01	8910004370	A650265	12001	6/4/2007	12/17/2007	12/17/2007
SAN JUAN 29-5 #52G DK	BASIN: DAKOTA	29	29	N	5	W	NM	11	30039293330001	C01	8910004370	A650265	12001	1/17/2006	1/31/2006	1/31/2006
SAN JUAN 29-5 #52G MV	BLANCO: MESADERE	29	29	N	5	W	NM	11	30039293330002	C02	8910004370	A650265	12001	1/17/2006	1/31/2006	1/31/2006
SAN JUAN 29-5 #52M DK	BASIN: DAKOTA	29	29	N	5	W	NM	11	30039263100001	C01	8910004370	A650265	12001	6/14/2000	6/14/2000	6/14/2000
SAN JUAN 29-5 #52M MV	BLANCO: MESADERE	29	29	N	5	W	NM	11	30039263100002	C02	8910004370	A650265	12001	11/22/2000	11/22/2000	11/22/2000
SAN JUAN 29-5 #53 DK	BASIN: DAKOTA	32	29	N	5	W	NM	11	30039203560001	C01	8910004370	A650265	12001			
SAN JUAN 29-5 #53F DK	BASIN: DAKOTA	32	29	N	5	W	NM	11	30039292070001	C01	8910004370	A650265	12001			
SAN JUAN 29-5 #53F MV	BLANCO: MESADERE	32	29	N	5	W	NM	11	30039292070002	C02	8910004370	A650265	12001	7/21/2005	7/21/2005	7/21/2005
SAN JUAN 29-5 #53M DK	BASIN: DAKOTA	32	29	N	5	W	NM	11	30039254810001	C01	8910004370	A650111	12001	7/21/2005	7/21/2005	7/21/2005
SAN JUAN 29-5 #53M MV	BLANCO: MESADERE	32	29	N	5	W	NM	11	30039254810002	C02	8910004370	A650265	12001	11/27/1995	11/27/1995	11/27/1995
SAN JUAN 29-5 #53 MV	BLANCO: MESADERE	32	29	N	5	W	NM	11	30039203560002	C02	8910004370	A650111	12001	11/27/1995	11/27/1995	11/27/1995
SAN JUAN 29-5 #54 DK	BASIN: DAKOTA	31	29	N	5	W	NM	11	30039203700001	C01	8910004370	A650265	12001	7/12/2002	7/12/2002	7/12/2002
SAN JUAN 29-5 #54M DK	BASIN: DAKOTA	31	29	N	5	W	NM	11	30039265820001	C01	8910004370	A650265	12001			
SAN JUAN 29-5 #54M MV	BLANCO: MESADERE	31	29	N	5	W	NM	11	30039265820002	C02	8910004370	A650111	12001	3/6/2002	3/6/2002	3/6/2002
SAN JUAN 29-5 #54 MV	BLANCO: MESADERE	31	29	N	5	W	NM	11	30039203700002	C02	8910004370	A650111	12001	8/14/2002	8/14/2002	8/14/2002
SAN JUAN 29-5 #55 DK	BASIN: DAKOTA	18	29	N	5	W	NM	11	30039203700001	C01	8910004370	A650111	12001	4/9/2001	4/9/2001	4/9/2001
SAN JUAN 29-5 #55F DK	BASIN: DAKOTA	18	29	N	5	W	NM	11	30039293330001	C01	8910004370	A650265	12001	4/5/1972	4/5/1972	4/5/1972
SAN JUAN 29-5 #55F MV	BLANCO: MESADERE	18	29	N	5	W	NM	11	30039293330002	C02	8910004370	A650265	12001	6/19/2006	7/21/2006	7/21/2006
SAN JUAN 29-5 #55M DK	BASIN: DAKOTA	18	29	N	5	W	NM	11	30039293330003	C02	8910004370	A650111	12001	6/19/2006	7/21/2006	7/21/2006
SAN JUAN 29-5 #55M MV	BLANCO: MESADERE	18	29	N	5	W	NM	11	30039265640001	C01	8910004370	A650265	12001	5/22/2001	5/22/2001	5/22/2001
SAN JUAN 29-5 #55 MV	BLANCO: MESADERE	18	29	N	5	W	NM	11	30039265640002	C02	8910004370	A650111	12001			
SAN JUAN 29-5 #55 MV	BLANCO: MESADERE	18	29	N	5	W	NM	11	30039204490001	C01	8910004370	A650111	12001	10/17/2001	10/17/2001	10/17/2001
SAN JUAN 29-5 #56 DK	BASIN: DAKOTA	19	29	N	5	W	NM	11	30039204490002	C02	8910004370	A650265	12001	8/21/1997	9/17/1997	9/17/1997
SAN JUAN 29-5 #56M DK	BASIN: DAKOTA	19	29	N	5	W	NM	11	30039265830001	C01	8910004370	A650265	12001	6/12/2001	6/12/2001	6/12/2001
SAN JUAN 29-5 #56M MV	BLANCO: MESADERE	19	29	N	5	W	NM	11	30039265830002	C02	8910004370	A650111	12001	10/19/2001	10/19/2001	10/19/2001
SAN JUAN 29-5 #56 MV	BLANCO: MESADERE	19	29	N	5	W	NM	11	30039204490003	C01	8910004370	A650111	12001	4/1/2001	4/1/2001	4/1/2001
SAN JUAN 29-5 #57 DK	BASIN: DAKOTA	20	29	N	5	W	NM	11	30039204490004	C02	8910004370	A650265	12001			
SAN JUAN 29-5 #57F DK	BLANCO: MESADERE	20	29	N	5	W	NM	11	30039297230001	C01	8910004370	A650265	12001	7/1/2006	9/1/2006	9/1/2006
SAN JUAN 29-5 #57F MV	BLANCO: MESADERE	20	29	N	5	W	NM	11	30039297230002	C02	8910004370	A650111	12001	7/1/2006	9/1/2006	9/1/2006
SAN JUAN 29-5 #57G DK	BASIN: DAKOTA	20	29	N	5	W	NM	11	30039293330001	C01	8910004370	A650265	12001	1/16/2006	1/30/2006	1/30/2006
SAN JUAN 29-5 #57G MV	BLANCO: MESADERE	20	29	N	5	W	NM	11	30039293330002	C02	8910004370	A650111	12001	1/16/2006	1/30/2006	1/30/2006
SAN JUAN 29-5 #57M DK	BASIN: DAKOTA	20	29	N	5	W	NM	11	30039258330001	C01	8910004370	A650265	12001			
SAN JUAN 29-5 #57M MV	BLANCO: MESADERE	20	29	N	5	W	NM	11	30039258330002	C02	8910004370	A650111	12001	1/15/1999	1/15/1999	1/15/1999
SAN JUAN 29-5 #58 DK	BASIN: DAKOTA	30	29	N	5	W	NM	11	30039204490001	C01	8910004370	A650265	12001	10/18/1999	10/18/1999	10/18/1999
SAN JUAN 29-5 #58M DK	BASIN: DAKOTA	30	29	N	5	W	NM	11	30039265800001	C01	8910004370	A650265	12001	7/1/2001	7/1/2001	7/1/2001
SAN JUAN 29-5 #58M MV	BLANCO: MESADERE	30	29	N	5	W	NM	11	30039265800002	C02	8910004370	A650111	12001	11/27/2001	11/27/2001	11/27/2001
SAN JUAN 29-5 #58 MV	BLANCO: MESADERE	30	29	N	5	W	NM	11	30039204490001	C01	8910004370	A650265	12001	4/1/2002	4/1/2002	4/1/2002
SAN JUAN 29-5 #59 DK	BASIN: DAKOTA	31	29	N	5	W	NM	11	30039204490002	C02	8910004370	A650265	12001			
SAN JUAN 29-5 #59M DK	BASIN: DAKOTA	31	29	N	5	W	NM	11	30039265810001	C01	8910004370	A650265	12001	4/30/2002	4/30/2002	4/30/2002
SAN JUAN 29-5 #59M MV	BLANCO: MESADERE	31	29	N	5	W	NM	11	30039265810002	C02	8910004370	A650111	12001	8/15/2002	8/15/2002	8/15/2002

Prod Stat: 11 Flowing Well
21 Pumping Well
41 Shut-in

61 Temp Abandoned
71 Perm Abandoned Well
82 Drilling (Developmental)
PM - Pressure Monitoring

San Juan 29-5 Unit Wells Status as of 2-8-09

Well Name	Resv Name	Sec	Twn	Dir	Rng	Dir	ST	Prod Stat	Api Well Code	MMS Prod Interval	MMS Lease Agr	Use ID	Oper ID	Compl Dt	Int Prod Dt	1st Sale Dt
SAN JUAN 29-5 #59 MV	BLANCO: MESAVEVERDE	31	29	N	5	W	NM	11	300392044800002	C02	8910004370	A650111	12001			7/3/2002
SAN JUAN 29-5 #5F DK	BASIN: DAKOTA	33	29	N	5	W	NM	11	300392786000001	C01	891000437B	A650265	12001		6/17/2005	6/17/2005
SAN JUAN 29-5 #5F MV	BLANCO: MESAVEVERDE	33	29	N	5	W	NM	11	300392786000002	C02	8910004370	A650111	12001		6/17/2005	6/17/2005
SAN JUAN 29-5 #5G DK	BASIN: DAKOTA	33	29	N	5	W	NM	11	300393008100001	C01	891000437B	A650265	12001		4/18/2007	4/18/2007
SAN JUAN 29-5 #5G MV	BLANCO: MESAVEVERDE	33	29	N	5	W	NM	11	300393008100002	C02	8910004370	A650111	12001	3/31/2007	4/18/2007	4/18/2007
SAN JUAN 29-5 #5M DK	BASIN: DAKOTA	33	29	N	5	W	NM	11	300392786000001	C01	891000437B	A650265	12001	3/31/2007	4/18/2007	4/18/2007
SAN JUAN 29-5 #5M MV	BLANCO: MESAVEVERDE	33	29	N	5	W	NM	11	300392786000002	C02	8910004370	A650111	12001	10/5/2005	10/5/2005	10/5/2005
SAN JUAN 29-5 #5X MV	BLANCO: MESAVEVERDE	32	29	N	5	W	NM	11	300390750700001	S01	8910004370	A650111	12001	10/5/2005	10/5/2005	10/5/2005
SAN JUAN 29-5 #60 DK	BASIN: DAKOTA	33	29	N	5	W	NM	11	300392045600001	S01	891000437B	A650265	12001			
SAN JUAN 29-5 #60F DK	BASIN: DAKOTA	32	29	N	5	W	NM	11	300392927500001	C01	891000437B	A650265	12001		12/19/2005	12/19/2005
SAN JUAN 29-5 #60F MV	BLANCO: MESAVEVERDE	32	29	N	5	W	NM	11	300392927500002	C02	8910004370	A650111	12001		12/19/2005	12/19/2005
SAN JUAN 29-5 #60G DK	BASIN: DAKOTA	32	29	N	5	W	NM	11	300392927400001	C01	891000437B	A650265	12001		12/19/2005	12/19/2005
SAN JUAN 29-5 #60G MV	BLANCO: MESAVEVERDE	32	29	N	5	W	NM	11	300392927400002	C02	8910004370	A650111	12001		12/19/2005	12/19/2005
SAN JUAN 29-5 #60M DK	BASIN: DAKOTA	32	29	N	5	W	NM	11	300392630000001	C01	891000437B	A650265	12001		6/2/2000	6/2/2000
SAN JUAN 29-5 #60M MV	BLANCO: MESAVEVERDE	32	29	N	5	W	NM	11	300392630000002	C02	8910004370	A650111	12001		11/13/2000	11/13/2000
SAN JUAN 29-5 #61A MV	BLANCO: MESAVEVERDE	9	29	N	5	W	NM	11	300392975900001	S01	8910004370	A650111	12001	10/15/2007	11/14/2007	11/14/2007
SAN JUAN 29-5 #61B MV	BLANCO: MESAVEVERDE	9	29	N	5	W	NM	11	300393025400001	S01	8910004370	A650111	12001	10/15/2007	11/14/2007	11/14/2007
SAN JUAN 29-5 #61C MV	BLANCO: MESAVEVERDE	9	29	N	5	W	NM	11	300392975800001	S01	8910004370	A650111	12001	10/20/2007	11/20/2007	11/20/2007
SAN JUAN 29-5 #61 FC	BASIN: CB: FRUITLAND COAL N	9	29	N	5	W	NM	11	300392102800001	C01	NM/NMT 16308	A650843	12001	10/11/2002	10/11/2002	10/11/2002
SAN JUAN 29-5 #61 MV	BLANCO: MESAVEVERDE	7	29	N	5	W	NM	11	300392062500001	S01	891000437B	A650265	12001	3/11/1975		
SAN JUAN 29-5 #62 DK	BASIN: DAKOTA	7	29	N	5	W	NM	11	300392927300001	C01	891000437B	A650265	12001		12/20/2005	12/20/2005
SAN JUAN 29-5 #62F MV	BLANCO: MESAVEVERDE	7	29	N	5	W	NM	11	300392927300002	C02	8910004370	A650111	12001		12/20/2005	12/20/2005
SAN JUAN 29-5 #62M DK	BASIN: DAKOTA	7	29	N	5	W	NM	11	300392938500001	C01	891000437B	A650265	12001	9/27/2006	9/26/2006	11/20/2006
SAN JUAN 29-5 #62M MV	BLANCO: MESAVEVERDE	7	29	N	5	W	NM	11	300392938500002	C02	8910004370	A650111	12001	9/27/2006	9/26/2006	11/20/2006
SAN JUAN 29-5 #63 DK	BASIN: DAKOTA	17	29	N	5	W	NM	11	300392071400001	S01	8910004370	A650111	12001		10/11/2007	11/14/2007
SAN JUAN 29-5 #63F DK	BLANCO: MESAVEVERDE	17	29	N	5	W	NM	11	300392974100001	C01	891000437B	A650265	12001	10/11/2007	10/8/2007	11/14/2007
SAN JUAN 29-5 #63F MV	BLANCO: MESAVEVERDE	17	29	N	5	W	NM	11	300392974100002	C02	8910004370	A650111	12001	10/11/2007	10/8/2007	11/14/2007
SAN JUAN 29-5 #63M DK	BASIN: DAKOTA	17	29	N	5	W	NM	11	300392631100001	C01	891000437B	A650265	12001	4/20/2000	4/20/2000	4/20/2000
SAN JUAN 29-5 #63M MV	BLANCO: MESAVEVERDE	17	29	N	5	W	NM	11	300392631100002	C02	8910004370	A650111	12001	2/14/2001	2/14/2001	2/14/2001
SAN JUAN 29-5 #64 DK	BASIN: DAKOTA	21	29	N	5	W	NM	11	300392071100001	C01	891000437B	A650265	12001			
SAN JUAN 29-5 #64F DK	BLANCO: MESAVEVERDE	21	29	N	5	W	NM	11	300392973800001	C01	891000437B	A650265	12001	9/27/2007	9/27/2007	11/14/2007
SAN JUAN 29-5 #64F MV	BLANCO: MESAVEVERDE	21	29	N	5	W	NM	11	300392973800002	C02	8910004370	A650111	12001	9/27/2007	9/24/2007	11/14/2007
SAN JUAN 29-5 #64M DK	BASIN: DAKOTA	21	29	N	5	W	NM	11	300392583400001	C01	891000437B	A650265	12001		1/21/1999	1/21/1999
SAN JUAN 29-5 #64M MV	BLANCO: MESAVEVERDE	21	29	N	5	W	NM	11	300392583400002	C02	8910004370	A650111	12001		4/14/1999	4/14/1999
SAN JUAN 29-5 #65 DK	BASIN: DAKOTA	28	29	N	5	W	NM	11	300392071100001	C01	8910004370	A650111	12001	3/27/2001	3/27/2001	3/27/2001
SAN JUAN 29-5 #65F DK	BLANCO: MESAVEVERDE	28	29	N	5	W	NM	11	300392970800001	C01	891000437B	A650265	12001			
SAN JUAN 29-5 #65F MV	BLANCO: MESAVEVERDE	28	29	N	5	W	NM	11	300392955400001	C01	891000437B	A650265	12001	5/26/2006	7/10/2006	7/10/2006
SAN JUAN 29-5 #65M DK	BASIN: DAKOTA	28	29	N	5	W	NM	11	300392955400002	C02	8910004370	A650111	12001	5/26/2006	7/10/2006	7/10/2006
SAN JUAN 29-5 #65M MV	BLANCO: MESAVEVERDE	28	29	N	5	W	NM	11	300392549200001	C01	891000437B	A650265	12001		11/27/1995	11/27/1995
SAN JUAN 29-5 #65 MV	BLANCO: MESAVEVERDE	28	29	N	5	W	NM	11	300392070800002	C02	8910004370	A650111	12001	11/27/1995	11/27/1995	8/6/2002
SAN JUAN 29-5 #66 DK	BASIN: DAKOTA	33	29	N	5	W	NM	11	300392073000001	S01	891000437B	A650265	12001			
SAN JUAN 29-5 #66F DK	BLANCO: MESAVEVERDE	33	29	N	5	W	NM	11	300392973900001	C01	891000437B	A650265	12001	6/29/2006	8/9/2006	8/9/2006
SAN JUAN 29-5 #66F MV	BLANCO: MESAVEVERDE	33	29	N	5	W	NM	11	300392973900002	C02	8910004370	A650111	12001	6/29/2006	8/9/2006	8/9/2006
SAN JUAN 29-5 #66G DK	BASIN: DAKOTA	33	29	N	5	W	NM	11	300392921100001	C01	891000437B	A650265	12001	12/22/2005	1/24/2006	1/24/2006
SAN JUAN 29-5 #66G MV	BLANCO: MESAVEVERDE	33	29	N	5	W	NM	11	300392921100002	C02	8910004370	A650111	12001	12/22/2005	1/24/2006	1/24/2006
SAN JUAN 29-5 #66M DK	BASIN: DAKOTA	33	29	N	5	W	NM	11	300392630100001	C01	891000437B	A650265	12001		6/13/2000	6/13/2000
SAN JUAN 29-5 #66M MV	BLANCO: MESAVEVERDE	33	29	N	5	W	NM	11	300392630100002	C02	8910004370	A650111	12001	11/15/2000	11/15/2000	11/15/2000
SAN JUAN 29-5 #67 DK	BASIN: DAKOTA	20	29	N	5	W	NM	11	300392070900001	C01	891000437B	A650265	12001			
SAN JUAN 29-5 #67F DK	BLANCO: MESAVEVERDE	20	29	N	5	W	NM	11	300392974000001	C01	891000437B	A650265	12001	7/26/2006	9/11/2006	9/11/2006
SAN JUAN 29-5 #67F MV	BLANCO: MESAVEVERDE	20	29	N	5	W	NM	11	300392974000002	C02	8910004370	A650111	12001	7/26/2006	9/11/2006	9/11/2006
SAN JUAN 29-5 #67M DK	BLANCO: MESAVEVERDE	20	29	N	5	W	NM	11	300392582100001	C01	891000437B	A650265	12001	2/23/1999	2/23/1999	2/23/1999
SAN JUAN 29-5 #67M MV	BLANCO: MESAVEVERDE	20	29	N	5	W	NM	11	300392582100002	C02	8910004370	A650111	12001	10/17/1999	10/17/1999	10/17/1999
SAN JUAN 29-5 #67 MV	BLANCO: MESAVEVERDE	20	29	N	5	W	NM	11	300392582100001	C01	891000437B	A650265	12001	3/15/2500	3/15/2500	3/15/2500
SAN JUAN 29-5 #68 DK	BASIN: DAKOTA	18	29	N	5	W	NM	11	300392070900002	C02	8910004370	A650111	12001			
SAN JUAN 29-5 #68M DK	BLANCO: MESAVEVERDE	18	29	N	5	W	NM	11	300392677000001	S01	891000437B	A650265	12001			
SAN JUAN 29-5 #68M MV	BLANCO: MESAVEVERDE	18	29	N	5	W	NM	11	300392677000002	C02	8910004370	A650111	12001	5/3/1975	11/3/2001	11/3/2001
SAN JUAN 29-5 #69 DK	BASIN: DAKOTA	21	29	N	5	W	NM	11	300392106500001	C01	891000437B	A650265	12001	1/22/2007	2/6/2007	2/6/2007
SAN JUAN 29-5 #69F DK	BLANCO: MESAVEVERDE	21	29	N	5	W	NM	11	300392972700001	C01	891000437B	A650265	12001	1/22/2007	2/6/2007	2/6/2007
SAN JUAN 29-5 #69F MV	BLANCO: MESAVEVERDE	21	29	N	5	W	NM	11	300392972700002	C02	8910004370	A650111	12001	1/22/2007	2/6/2007	2/6/2007

Prod Stat: 11 Flowing Well
21 Pumping Well
41 Shut-in

61 Temp Abandoned
71 Perm Abandoned Well
82 Drilling (Developmental)
PW - Pressure Monitoring

San Juan 29-5 Unit Wells Status as of 2-8-09

Well Name	Resv Name	Sec	Twn	Dir	Rng	Rng Dir	ST	Prod Stat	Api Well Code	MMS Prod Interval	MMS Lease Agr Number	Lse ID	Oper ID	Compl Dt	Int Prod Dt	1st Sale Dt
SAN JUAN 29-5 #69M DK	BASIN:DAKOTA	21	29	N	5	W	NM	11	300392972900C01	C01	891000437B	A650265	12001	1/2/2007	1/20/2007	1/20/2007
SAN JUAN 29-5 #69M MV	BLANCO:MESAVERDE	21	29	N	5	W	NM	11	300392972900C02	C02	891000437B	A650111	12001	1/2/2007	1/20/2007	1/20/2007
SAN JUAN 29-5 #69 MV	BLANCO:MESAVERDE	21	29	N	5	W	NM	11	300392106500C02	C02	891000437B	A650111	12001		11/12/2003	11/12/2003
SAN JUAN 29-5 #6A DK	BASIN:DAKOTA	27	29	N	5	W	NM	11	300392637100C01	C01	891000437B	A650265	12001		6/13/2000	6/13/2000
SAN JUAN 29-5 #6A MV	BLANCO:MESAVERDE	27	29	N	5	W	NM	11	300392637100C02	C02	891000437B	A650111	12001		11/29/2000	11/29/2000
SAN JUAN 29-5 #6M DK	BASIN:DAKOTA	27	29	N	5	W	NM	11	300392981800C01	C01	891000437B	A650265	12001	7/12/2007	7/12/2007	7/12/2007
SAN JUAN 29-5 #6M MV	BLANCO:MESAVERDE	27	29	N	5	W	NM	11	300392981800C02	C02	891000437B	A650111	12001	7/12/2007	7/12/2007	7/12/2007
SAN JUAN 29-5 #6 MV	BLANCO:MESAVERDE	27	29	N	5	W	NM	11	300390753100S01	S01	891000437B	A650111	12001			
SAN JUAN 29-5 #70 DK	BASIN:DAKOTA	28	29	N	5	W	NM	11	300392105000S01	S01	891000437B	A650265	12001			
SAN JUAN 29-5 #70F DK	BASIN:DAKOTA	28	29	N	5	W	NM	11	300392966700C01	C01	891000437B	A650265	12001	6/22/2006	8/15/2006	8/15/2006
SAN JUAN 29-5 #70F MV	BLANCO:MESAVERDE	28	29	N	5	W	NM	11	300392966700C02	C02	891000437B	A650111	12001	6/22/2006	8/15/2006	8/15/2006
SAN JUAN 29-5 #70G DK	BASIN:DAKOTA	29	29	N	5	W	NM	11	300392965300C01	C01	891000437B	A650265	12001	5/31/2006	8/11/2006	8/11/2006
SAN JUAN 29-5 #70G MV	BLANCO:MESAVERDE	29	29	N	5	W	NM	11	300392965300C02	C02	891000437B	A650111	12001	5/31/2006	8/11/2006	8/11/2006
SAN JUAN 29-5 #70M DK	BASIN:DAKOTA	28	29	N	5	W	NM	11	300392629900C01	C01	891000437B	A650265	12001		6/6/2000	6/6/2000
SAN JUAN 29-5 #70M MV	BLANCO:MESAVERDE	28	29	N	5	W	NM	11	300392629900C02	C02	891000437B	A650111	12001		2/1/2001	2/1/2001
SAN JUAN 29-5 #71 DK	BASIN:DAKOTA	16	29	N	5	W	NM	11	300392105300S01	S01	891000437B	A650269	12001			
SAN JUAN 29-5 #72F DK	BASIN:DAKOTA	17	29	N	5	W	NM	11	300392956200C01	C01	NMSE078281	A650572	12001	10/26/2007	12/5/2007	12/5/2007
SAN JUAN 29-5 #72F MV	BLANCO:MESAVERDE	17	29	N	5	W	NM	11	300392956200C02	C02	891000437B	A650111	12001	10/26/2007	12/5/2007	12/5/2007
SAN JUAN 29-5 #72M DK	BASIN:DAKOTA	17	29	N	5	W	NM	11	300392654100C01	C01	NMSE078281	A650572	12001		3/2/2001	3/2/2001
SAN JUAN 29-5 #72M MV	BLANCO:MESAVERDE	17	29	N	5	W	NM	11	300392654100C02	C02	891000437B	A650111	12001		1/22/2002	1/22/2002
SAN JUAN 29-5 #74 FC	BASIN CB:FRUITLAND COAL	17	29	N	5	W	NM	11	300392102900C02	C02	NMSE078281	A709685	12001		6/29/2004	6/29/2004
SAN JUAN 29-5 #74 MV	BLANCO:MESAVERDE	17	29	N	5	W	NM	11	300392102900C01	C01	891000437B	A650111	12001			
SAN JUAN 29-5 #75 DK	BASIN:DAKOTA	22	29	N	5	W	NM	11	300392105100S01	S01	891000437B	A650265	12001			
SAN JUAN 29-5 #75F DK	BASIN:DAKOTA	22	29	N	5	W	NM	41	300393008900C01	C01	891000437B	A650265	12001	9/17/2007	10/1/2007	10/1/2007
SAN JUAN 29-5 #75F MV	BLANCO:MESAVERDE	22	29	N	5	W	NM	11	300393008900C02	C02	891000437B	A650111	12001	9/17/2007	10/1/2007	10/1/2007
SAN JUAN 29-5 #75M DK	BASIN:DAKOTA	22	29	N	5	W	NM	11	300392786200C01	C01	891000437B	A650265	12001		6/3/2005	6/3/2005
SAN JUAN 29-5 #75M MV	BLANCO:MESAVERDE	22	29	N	5	W	NM	11	300392786200C02	C02	891000437B	A650111	12001		6/3/2005	6/3/2005
SAN JUAN 29-5 #77 DK	BASIN:DAKOTA	26	29	N	5	W	NM	11	300392105500C01	C01	891000437B	A650265	12001		11/27/2004	12/10/2004
SAN JUAN 29-5 #77 MV	BLANCO:MESAVERDE	26	29	N	5	W	NM	11	300392105500C02	C02	891000437B	A650111	12001			
SAN JUAN 29-5 #7A MV	BLANCO:MESAVERDE	7	29	N	5	W	NM	11	300392134000S01	S01	891000437B	A650111	12001			
SAN JUAN 29-5 #7B MV	BLANCO:MESAVERDE	7	29	N	5	W	NM	11	300392933200S01	S01	891000437B	A650111	12001	8/28/2006	9/25/2006	9/25/2006
SAN JUAN 29-5 #7 MV	BLANCO:MESAVERDE	7	29	N	5	W	NM	11	300390767700S01	S01	891000437B	A650111	12001			
SAN JUAN 29-5 #80 PC	GOBERNADOR:PICTURED CLIFF	23	29	N	5	W	NM	41	300392145400S01	S01	SRM1171	A650108	12001			
SAN JUAN 29-5 #87 PC	GOBERNADOR:PICTURED CLIFF	25	29	N	5	W	NM	11	300392180500S01	S01	891000437A	A650108	12001			
SAN JUAN 29-5 #8 MV	BLANCO:MESAVERDE	35	29	N	5	W	NM	11	300390749000S01	S01	891000437B	A650111	12001			
SAN JUAN 29-5 #90M MV	BLANCO:MESAVERDE	35	29	N	5	W	NM	11	300392973700S02	C02	891000437B	A650111	12001	9/11/2007	9/25/2007	9/25/2007
SAN JUAN 29-5 #90 MV	BLANCO:MESAVERDE	35	29	N	5	W	NM	11	300392178700S02	S02	891000437B	A650111	12001	12/8/2004	12/8/2004	12/8/2004
SAN JUAN 29-5 #91 DK	BASIN:DAKOTA	35	29	N	5	W	NM	61	300392178600S01	C01	891000437B	A650265	12001	9/5/1978	9/25/2007	9/25/2007
SAN JUAN 29-5 #91F DK	BLANCO:MESAVERDE	35	29	N	5	W	NM	11	300393021900C01	C01	891000437B	A650265	12001	9/3/2007	9/25/2007	9/25/2007
SAN JUAN 29-5 #91F MV	BLANCO:MESAVERDE	35	29	N	5	W	NM	11	300393021900C02	C02	NMSE078917	A650640	12001	9/3/2007	9/25/2007	9/25/2007
SAN JUAN 29-5 #91M DK	BASIN:DAKOTA	35	29	N	5	W	NM	11	300392973200C01	C01	891000437B	A650265	12001	9/19/2007	10/9/2007	10/9/2007
SAN JUAN 29-5 #91M MV	BLANCO:MESAVERDE	35	29	N	5	W	NM	11	300392973200C02	C02	NMSE078917	A710742	12001	9/19/2007	10/9/2007	10/9/2007
SAN JUAN 29-5 #91 MV	BLANCO:MESAVERDE	35	29	N	5	W	NM	11	300392178600S02	S02	NMSE078917	A650640	12001		10/9/2007	10/9/2007
SAN JUAN 29-5 #93 PC	GOBERNADOR:PICTURED CLIFF	23	29	N	5	W	NM	11	300392178400S01	S01	891000437A	A650108	12001		8/27/2002	8/27/2002
SAN JUAN 29-5 #94 PC	GOBERNADOR:PICTURED CLIFF	23	29	N	5	W	NM	11	300392180100S01	S01	891000437A	A650108	12001			
SAN JUAN 29-5 #97 PC	GOBERNADOR:PICTURED CLIFF	15	29	N	5	W	NM	11	300392209800S01	S01	891000437A	A650108	12001			
SAN JUAN 29-5 UNIT 39B DK	BASIN:DAKOTA	23	29	N	5	W	NM	88	W/O API			A713455	12001			
SAN JUAN 29-5 UNIT 39B MV	BLANCO:MESAVERDE	23	29	N	5	W	NM	88	W/O API			A650111	12001			
SAN JUAN 29-5 UNIT 6N DK	BASIN:DAKOTA	27	29	N	5	W	NM	82	300393056000C01	C01	A650265	12001				
SAN JUAN 29-5 UNIT 6N MV	BLANCO:MESAVERDE	27	29	N	5	W	NM	82	300393056000C02	C02	A650111	12001				
SAN JUAN 29-5 UNIT 88M DK	BASIN:DAKOTA	34	29	N	5	W	NM	88	W/O API			A650265	12001			
SAN JUAN 29-5 UNIT 88M MV	BLANCO:MESAVERDE	34	29	N	5	W	NM	88	W/O API			A650111	12001			
SAN JUAN 29-5 UNIT 90N DK	BASIN:DAKOTA	35	29	N	5	W	NM	88	W/O API			A650265	12001			
SAN JUAN 29-5 UNIT 90N MV	BLANCO:MESAVERDE	35	29	N	5	W	NM	88	W/O API			A650111	12001			
SAN JUAN 29-5 UT 77M DK	BASIN:DAKOTA						NM	88	300397482000C01			A650265	12001			
SAN JUAN 29-5 UT 77M MV	BLANCO:MESAVERDE						NM	88	300397482000C02			A650111	12001			

Prod Stat: 11 Flowing Well
21 Pumping Well
41 Shut-in

61 Temp Abandoned
71 Perm Abandoned Well
82 Drilling (Developmental)
PM - Pressure Monitoring

RSW

San Juan 29-5 Unit

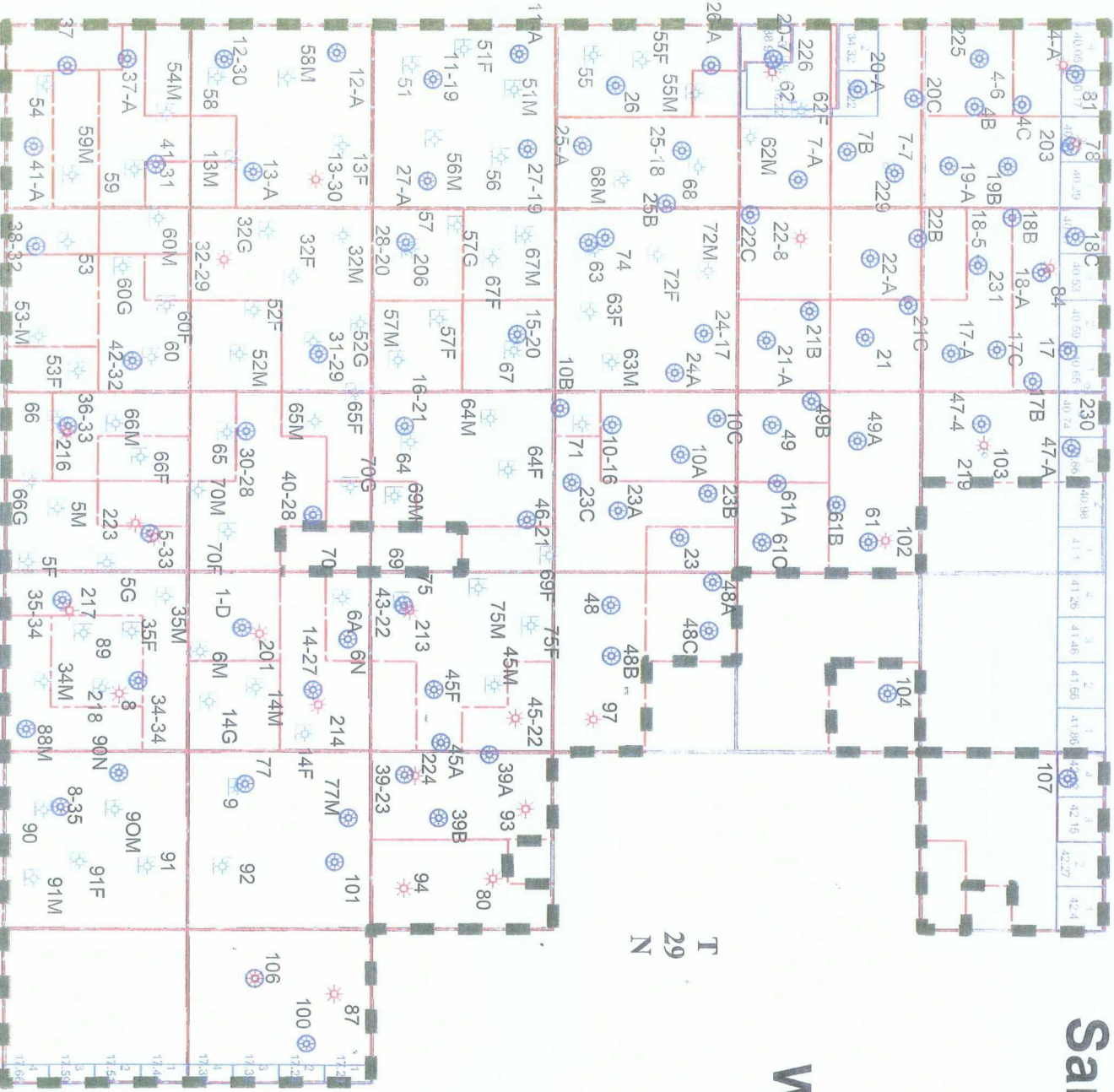
Well Formation

FRUITLAND COAL

PICTURED CLIFFS

MESAVERDE

DAKOTA



ConocoPhillips
Inventory Management
San Juan Business Unit
Farmington, New Mexico