

**OIL CONSERVATION  
DIVISION**

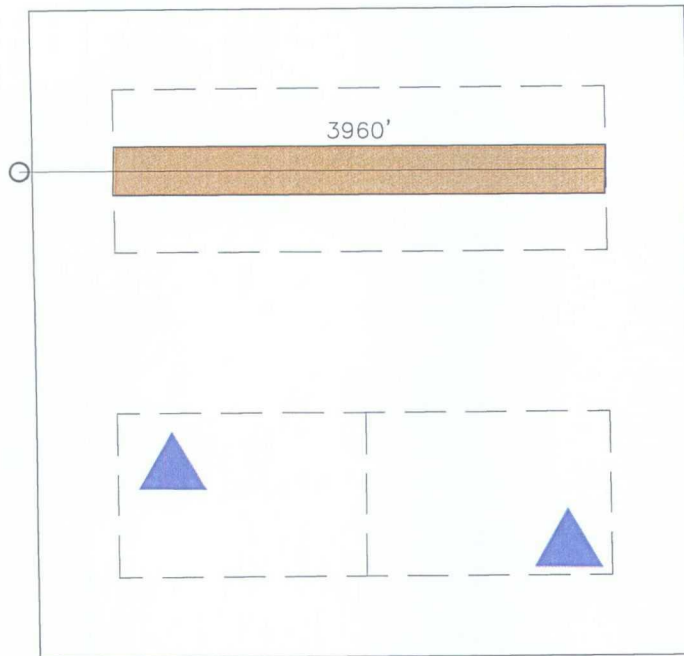
**CASE #: 14287**

**EXHIBIT**

**13**

## Well Design Before And After Setback Revision

### CURRENT SETBACKS: 660 FEET



### PROPOSED SETBACKS: 10 FEET



#### Legend

-  Existing Vertical Well
-  Proposed Horizontal Well
-  Incremental Footage

NMOCD CASE NO. 14287  
MARCH 19, 2009  
ENERGEN RESOURCES CORP.  
EXHIBIT NO. 13

**ENERGEN**  
RESOURCES

FILE: CONV\SJUAN\ANDREW 5