

Before the Oil Conservation Division  
Exhibit No. 3A  
Burlington Resources Oil & Gas Company LP  
**OCD CASE 14526**  
Hearing: August 19, 2010

District III  
1000 Rio Brazos Rd., Aztec, NM 87410  
Phone: (505) 334-6178 Fax: (505) 334-6170

State of New Mexico  
Energy, Minerals and Natural Resources

Form C-101  
Permit 105917

Oil Conservation Division  
1220 S. St Francis Dr.  
Santa Fe, NM 87505

**APPLICATION FOR PERMIT TO DRILL, RE-ENTER, DEEPEN, PLUGBACK, OR ADD A ZONE**

1. Operator Name and Address BURLINGTON RESOURCES OIL & GAS COMPANY LP 3401 E. 30TH STREET FARMINGTON, NM 87402		2. OGRID Number 14538
		3. API Number 30-045-35038
4. Property Code 18624	5. Property Name STATE COM SRC	6. Well No. 001B

**7. Surface Location**

III. - Lot	Section	Township	Range	Lot Idn	Feet From	N/S Line	Feet From	E/W Line	County
A	2	29N	08W	1	1150	N	1085	E	SAN JUAN

**8. Pool Information**

BLANCO-MESAVERDE (PRORATED GAS)	72319
BASIN DAKOTA (PRORATED GAS)	71599

**Additional Well Information**

9. Work Type New Well	10. Well Type GAS	11. Cable/Rotary	12. Lease Type State	13. Ground Level Elevation 6286
14. Multiple Y	15. Proposed Depth 7566	16. Formation Dakota Formation	17. Contractor	18. Spud Date
Depth to Ground water		Distance from nearest fresh water well		Distance to nearest surface water
Pit: Liner: Synthetic <input type="checkbox"/> mls thick      Clay <input type="checkbox"/> Pit Volume:      bbls      Drilling Method: Closed Loop System <input type="checkbox"/> Fresh Water <input type="checkbox"/> Brine <input type="checkbox"/> Diesel/Oil-based <input type="checkbox"/> Gas/Air <input type="checkbox"/>				

**19. Proposed Casing and Cement Program**

Type	Hole Size	Casing Type	Casing Weight/ft	Setting Depth	Sacks of Cement	Estimated TOC
Surf	12.25	9.625	32.3	200	121	0
Intl	8.75	7	23	3814	914	0
Prod	6.25	4.5	11.6	7566	512	3714

**Casing/Cement Program: Additional Comments**

This is a Type 3 as indicated in the BR/COPC Master Drilling Plan. Cement volumes are indicated in cubic feet instead of sacks. The Production Casing cement will be circulated inside the Intermediate Casing a minimum of 100'. The C144 & DHC will be submitted after the APD is approved.

**Proposed Blowout Prevention Program**

Type	Working Pressure	Test Pressure	Manufacturer
DoubleRam	2000	2000	Schafer

I hereby certify that the information given above is true and complete to the best of my knowledge and belief. I further certify that the drilling pit will be constructed according to NMOC guidelines <input type="checkbox"/> , a general permit <input type="checkbox"/> , or an (attached) alternative OCD-approved plan <input type="checkbox"/> . Printed Name: Electronically filed by Tracey N Monroe Title: Staff Regulatory Technician Email Address: monrotn@conocophillips.com Date: 11/25/2009      Phone: 505-326-9752	<b>OIL CONSERVATION DIVISION</b>	
	Approved By: Charlie Perrin	
	Title: District Supervisor	
	Approved Date: 12/1/2009      Expiration Date: 12/1/2011	
	Conditions of Approval Attached	

District I  
1625 N. French Dr., Hobbs, NM 88240

District II  
1301 W. Grand Avenue, Artesia, NM 88210

District III  
1000 Rio Brazos Rd., Aztec, NM 87410

District IV  
1220 S. St. Francis Dr., Santa Fe, NM 87505

State of New Mexico  
Energy, Minerals & Natural Resources Department

OIL CONSERVATION DIVISION  
1220 South St. Francis Dr.  
Santa Fe, NM 87505

Form C-102  
Revised October 12, 2005

Instructions on back  
Submit to Appropriate District Office  
State Lease - 4 Copies  
Fee Lease - 3 Copies

☐ AMENDED REPORT

WELL LOCATION AND ACREAGE DEDICATION PLAT

<sup>1</sup> API Number	<sup>2</sup> Pool Code 72319 / 71599	<sup>3</sup> Pool Name BLANCO MESAVERDE / BASIN DAKOTA
<sup>4</sup> Property Code	<sup>5</sup> Property Name STATE COM SRC	<sup>6</sup> Well Number 1B
<sup>7</sup> GRID No. 14538	<sup>8</sup> Operator Name BURLINGTON RESOURCES OIL & GAS COMPANY LP	<sup>9</sup> Elevation 6286'

<sup>10</sup> Surface Location

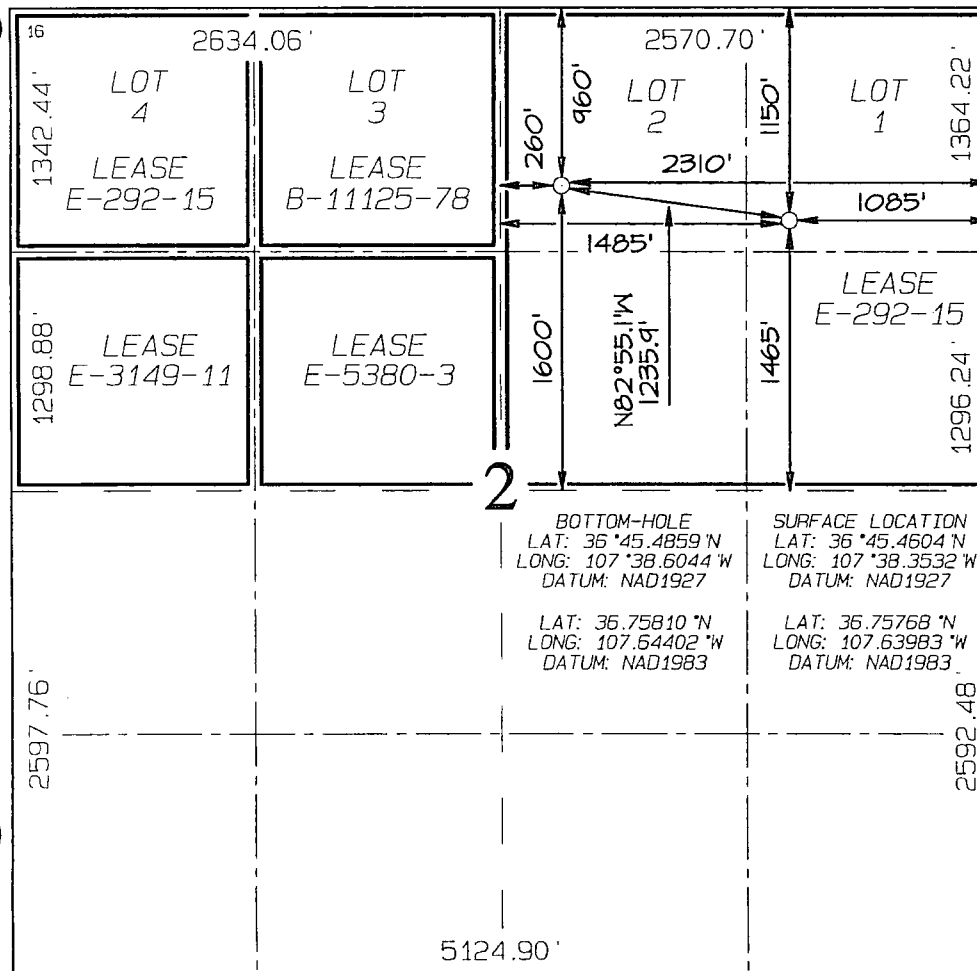
UL or lot no.	Section	Township	Range	Lot Idn	Feet from the	North/South line	Feet from the	East/West line	County
A	2	29N	8W		1150	NORTH	1085	EAST	SAN JUAN

<sup>11</sup> Bottom Hole Location If Different From Surface

UL or lot no.	Section	Township	Range	Lot Idn	Feet from the	North/South line	Feet from the	East/West line	County
B	2	29N	8W		960	NORTH	2310	EAST	SAN JUAN

<sup>12</sup> Dedicated Acres 326.92 Acres - N/2	<sup>13</sup> Joint or Infill	<sup>14</sup> Consolidation Code	<sup>15</sup> Order No.
---	-------------------------------	----------------------------------	-------------------------

NO ALLOWABLE WILL BE ASSIGNED TO THIS COMPLETION UNTIL ALL INTERESTS HAVE BEEN CONSOLIDATED OR A NON-STANDARD UNIT HAS BEEN APPROVED BY THE DIVISION



<sup>17</sup> OPERATOR CERTIFICATION  
I hereby certify that the information contained herein is true and complete to the best of my knowledge and belief, and that this organization either owns a working interest or unleased mineral interest in the land including the proposed bottom-hole location or has a right to drill this well at this location pursuant to a contract with an owner of such a mineral or working interest, or to a voluntary pooling agreement or a compulsory pooling order heretofore entered by the division.

Signature \_\_\_\_\_ Date \_\_\_\_\_

Printed Name \_\_\_\_\_

<sup>18</sup> SURVEYOR CERTIFICATION

I hereby certify that the well location shown on this plat was plotted from field notes of actual surveys made by me or under my supervision, and that the same is true and correct to the best of my belief.

Date of Survey: JULY 5, 2009

Signature and Seal of Professional Surveyor



JASON C. EDWARDS  
Certificate Number 15269