

B
West

WAGU #13

WAGU #22

WAGU #4

WAGU #5

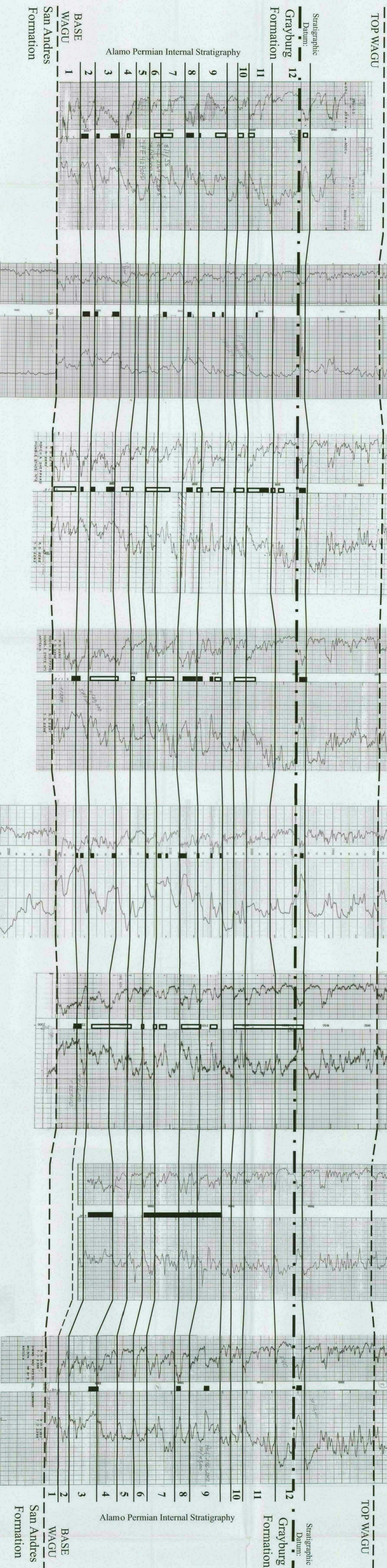
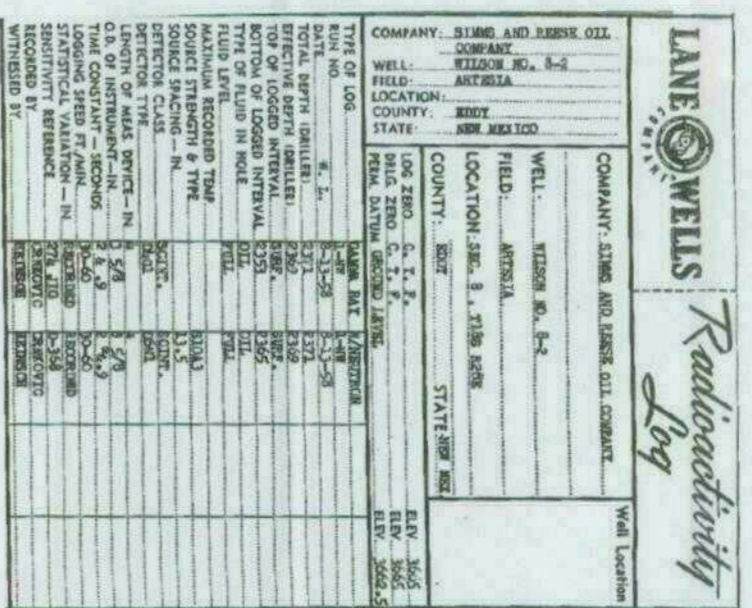
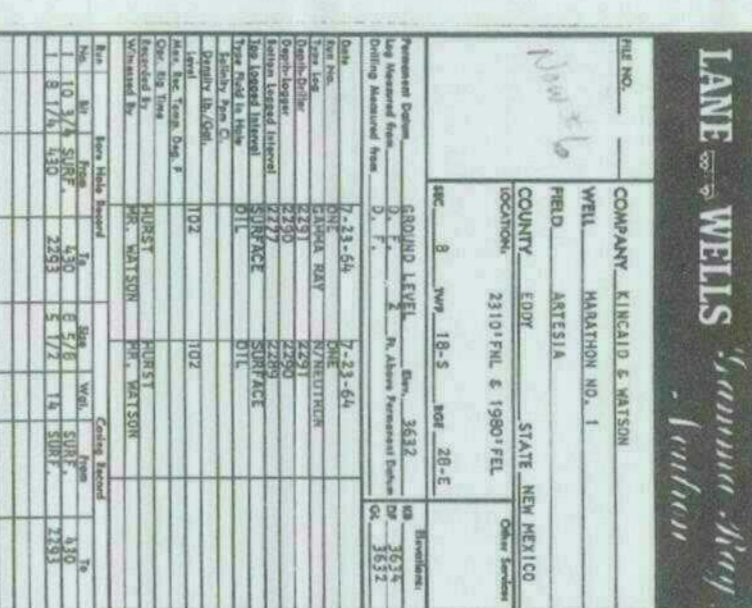
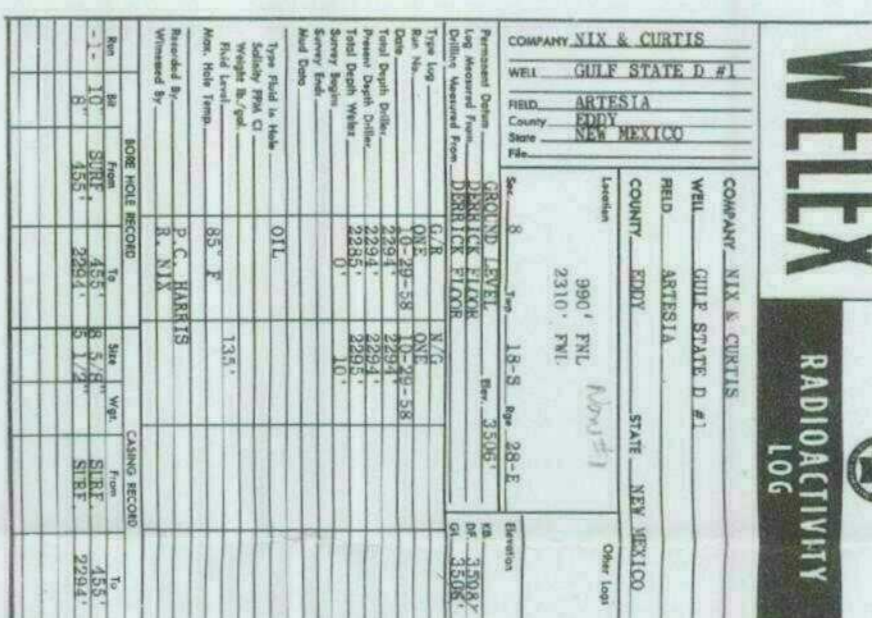
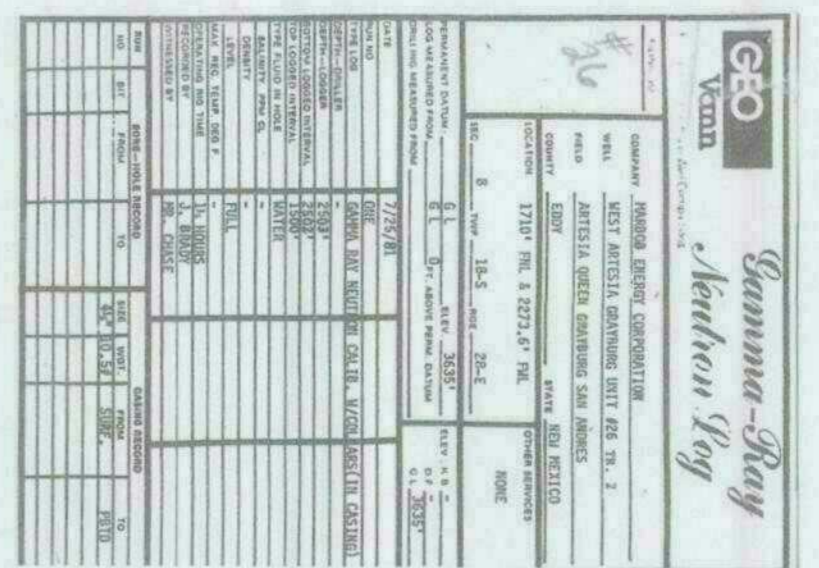
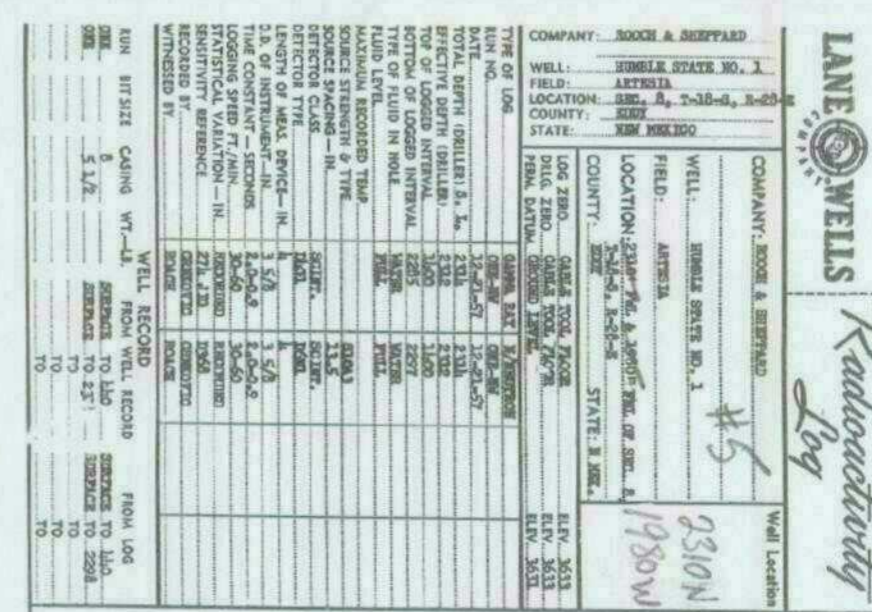
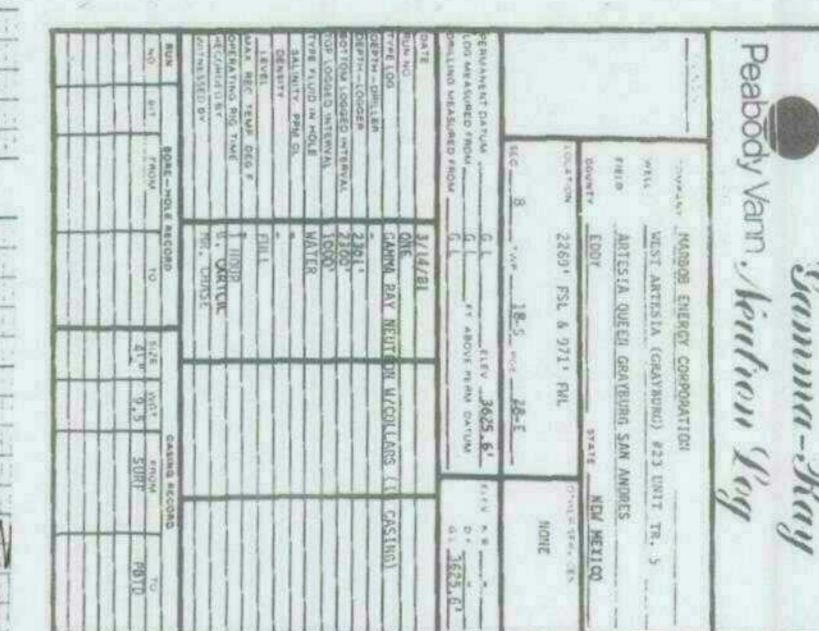
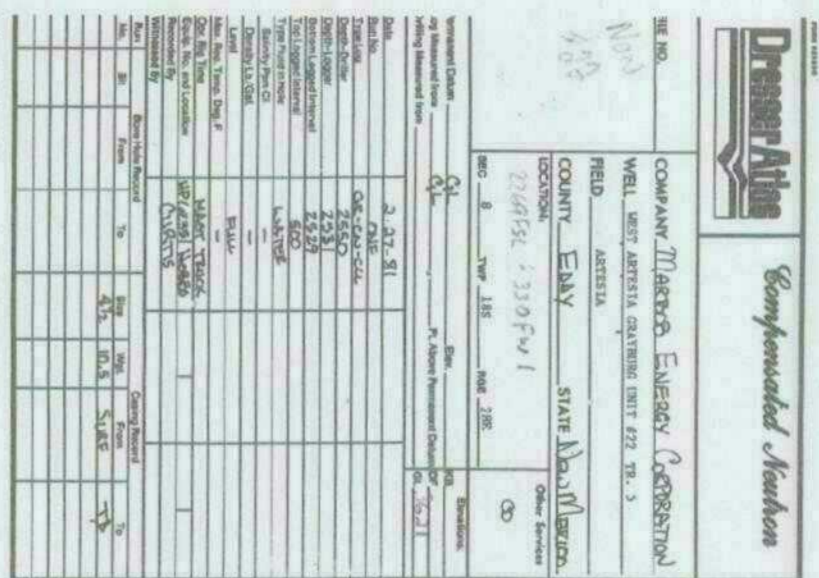
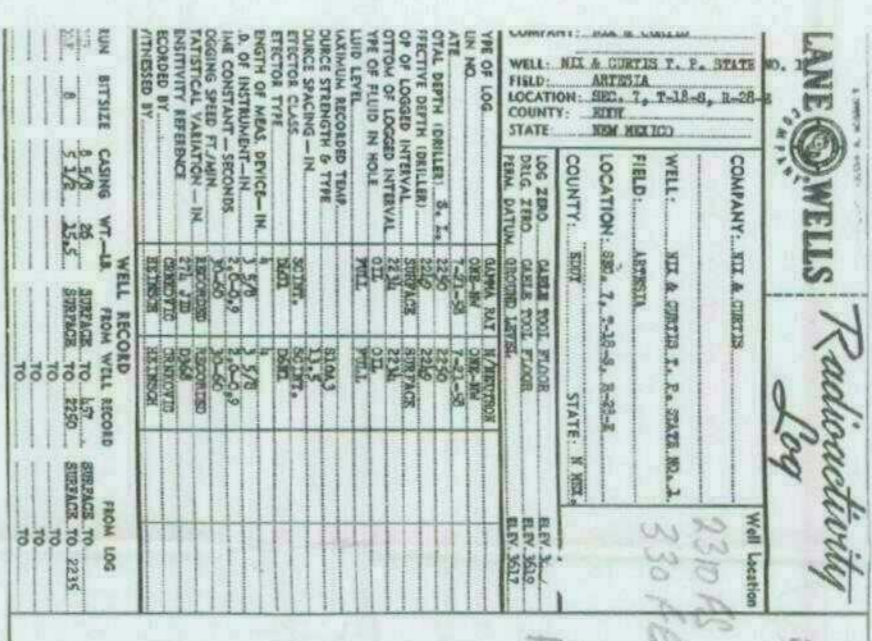
WAGU #26

WAGU #1

WAGU #6

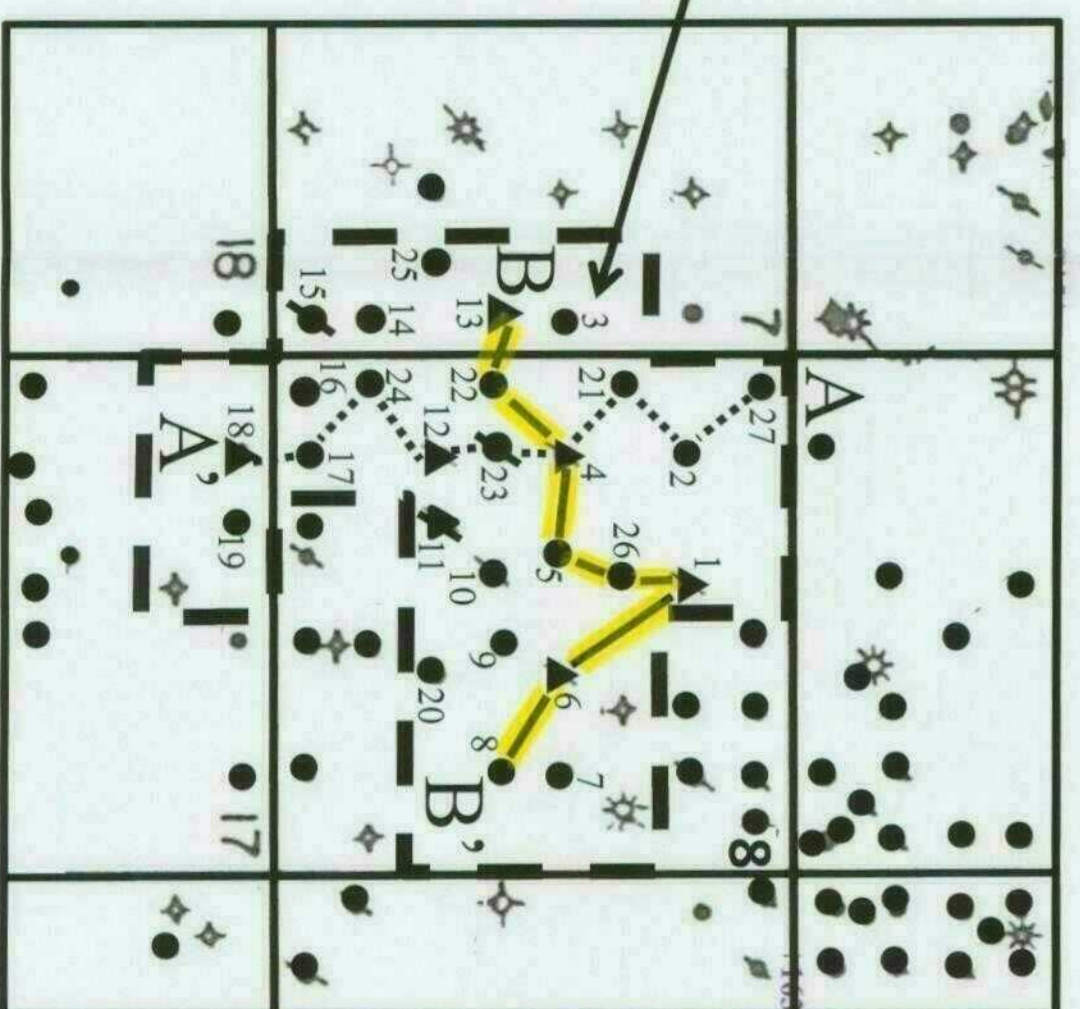
WAGU #8

B'
East



West Artesia Grayburg Unit

Line of Section



- Historical Perforations

- Perforations Added in 2009/2010

Alamo Permian Resources, LLC

West Artesia Grayburg Unit

T-18-S, R-28-E, Sections 7 & 8
Eddy County, New Mexico

West - East Stratigraphic Cross-Section B-B'

Datum: Top Grayburg Formation
Vertical Scale: 2.5 Inches = 100 Feet
Horizontal Scale: None

BEFORE THE OIL CONSERVATION DIVISION
State of New Mexico
Case No. 1881
Alamo Permian Resources, LLC
Hearing Date: March 17, 2011