

#361

RECEIVED

JAN 21 2004



Oil Conservation Division
1220 S. St. Francis Drive
Santa Fe, NM 87505

Williams Production Company, LLC
One Williams Center
P.O. Box 3102
Tulsa, Oklahoma 74101
918/573-6169

Assistant District Manager, Minerals
Bureau of Land Management
Farmington Resource Area
1235 LaPlata Highway
Farmington, New Mexico 87401

Commissioner of Public Lands
State of New Mexico
P. O. Box 1148
Santa Fe, New Mexico 87504-1148

Oil Conservation Commission
State of New Mexico
1220 South St. Francis Drive
Santa Fe, New Mexico 87505-4000

Re: Cox Canyon Unit I, Sec.No.946
San Juan County, New Mexico
2004 Plan of Development

Gentlemen:

By letter dated April 30, 2003, Williams Production Company, as Cox Canyon Unit Operator, filed the 2003 Plan of Development for the referenced Unit. Following is a summary of operations proposed under the 2003 Plan of Development:

<u>Well Name</u>	<u>Formation</u>	<u>Operation Status</u>
New Mexico 32-11 Com #1B (Mesaverde/Dakota Dual)	Mesaverde	Carry over to 2004 POD
Cox Canyon Unit #1C	Dakota	Carry over to 2004 POD
Cox Canyon Unit #4B	Mesaverde	Carry over to 2004 POD
Cox Canyon Unit #4C	Mesaverde	Carry over to 2004 POD
Cox Canyon Unit #5B (Mesaverde/Dakota Dual)	Mesaverde	Carry over to 2004 POD
Cox Canyon Unit #5C	Dakota	Carry over to 2004 POD
Cox Canyon Unit #6B	Mesaverde	Carry over to 2004 POD
Cox Canyon Unit #6C	Mesaverde	Carry over to 2004 POD
Cox Canyon Unit #7B	Mesaverde	Carry over to 2004 POD
Cox Canyon Unit #7C	Mesaverde	Carry over to 2004 POD
Cox Canyon Unit #8B (Mesaverde/Dakota Dual)	Mesaverde	Carry over to 2004 POD
Cox Canyon Unit #8C	Dakota	Carry over to 2004 POD
Cox Canyon Unit Com #9B	Mesaverde	Drilled and completed
	Mesaverde	Carry over to 2004 POD



<u>Well Name</u>	<u>Formation</u>	<u>Operation Status</u>
Cox Canyon Unit Com #9C	Mesaverde	Carry over to 2004 POD

The Participating Areas which have been established in the Cox Canyon Unit are as follows:

<u>Formation</u>	<u>Revision</u>	<u>Effective</u>
Pictured Cliffs	Fifth	October 2, 1977
Mesaverde	Initial	July 23, 1953

Attached are maps of each of the producing formations within the Cox Canyon Unit showing the boundaries of the Participating Areas as applicable. There were no wells commingled, recompleted or abandoned within the Cox Canyon Unit during 2004.

Pursuant to Section 10 the Cox Canyon Unit Agreement, Williams Production Company, as Unit Operator, proposes a Plan of Development providing for the completion of the following wells during 2004:

<u>Well Name</u>	<u>Drilling Block</u>	<u>Formation</u>
New Mexico 32-11 Com #1B	S/2 Sec.20,T32N,R11W	Mesaverde
(Mesaverde/Dakota Dual)	S/2 Sec.20,T32N,R11W	Dakota
Cox Canyon Unit #1C	W/2 Sec.16,T32N,R11W	Mesaverde
Cox Canyon Unit #4B	E/2 Sec.21,T32N,R11W	Mesaverde
Cox Canyon Unit #4C	E/2 Sec.21,T32N,R11W	Mesaverde
Cox Canyon Unit #5B	W/2 Sec.21,T32N,R11W	Mesaverde
(Mesaverde/Dakota Dual)	W/2 Sec.21,T32N,R11W	Dakota
Cox Canyon Unit #5C	W/2 Sec.21,T32N,R11W	Mesaverde
Cox Canyon Unit #6B	E/2 Sec.16,T32,R11W	Mesaverde
Cox Canyon Unit #6C	E/2 Sec.16,T32N,R11W	Mesaverde
Cox Canyon Unit #7B	W/2 E/2 & E/2 W/2 Sec.17,T32N,R11W	Mesaverde
Cox Canyon Unit #7C	W/2 E/2 & E/2 W/2 Sec.17,T32N,R11W	Mesaverde
Cox Canyon Unit #8B	E/2 Sec.8,E/2E/2 Sec.17,T32N,R11W	Mesaverde
(Mesaverde/Dakota Dual)	E/2 Sec.8,E/2E/2 Sec.17,T32N,R11W	Dakota
Cox Canyon Unit Com #9B	N/2 Sec.20,T32N,R11W	Mesaverde
Cox Canyon Unit Com #9C	N/2 Sec.20,T32N,R11W	Mesaverde
Cox Canyon Unit Com #200A	All Sec. 9,T32N,R11W	Fruitland Coal
Cox Canyon Unit Com #204	W/2 Sec. 21,T32N,R11W	Fruitland Coal

Williams Production Company, as Unit Operator, will drill any offset wells that may be required to prevent drainage of unitized substances and any other wells deemed necessary or which are requested by the Unit Operator or Working Interest Owners.

If this Plan of Development is acceptable, please signify your approval, as required under Section 10 of the Unit Agreement, in the space provided on the enclosed sheet and return an approved copy to Williams Production Company.



Sincerely,

M. Vern Hansen, CPL
Staff Landman

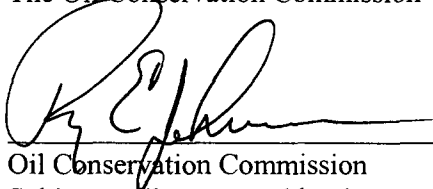
cc: Working Interest Owners
Mike Turnbaugh
Tracy Ross
Kris Russell
Mitch Reeves

APPROVED: _____
Assistant District Manager, Mineral
Bureau of Land Management
Subject to like approval by the
Commissioner of Public Lands and
The Oil Conservation Commission

DATE: _____

APPROVED: _____
Commissioner of Public Lands
Subject to like approval by the
Area Oil and Gas Supervisor and
The Oil Conservation Commission

DATE: _____

APPROVED:  _____
Oil Conservation Commission
Subject to like approval by the
Area Oil and Gas Supervisor and
The Commissioner of Public Lands

DATE: 1/23/04

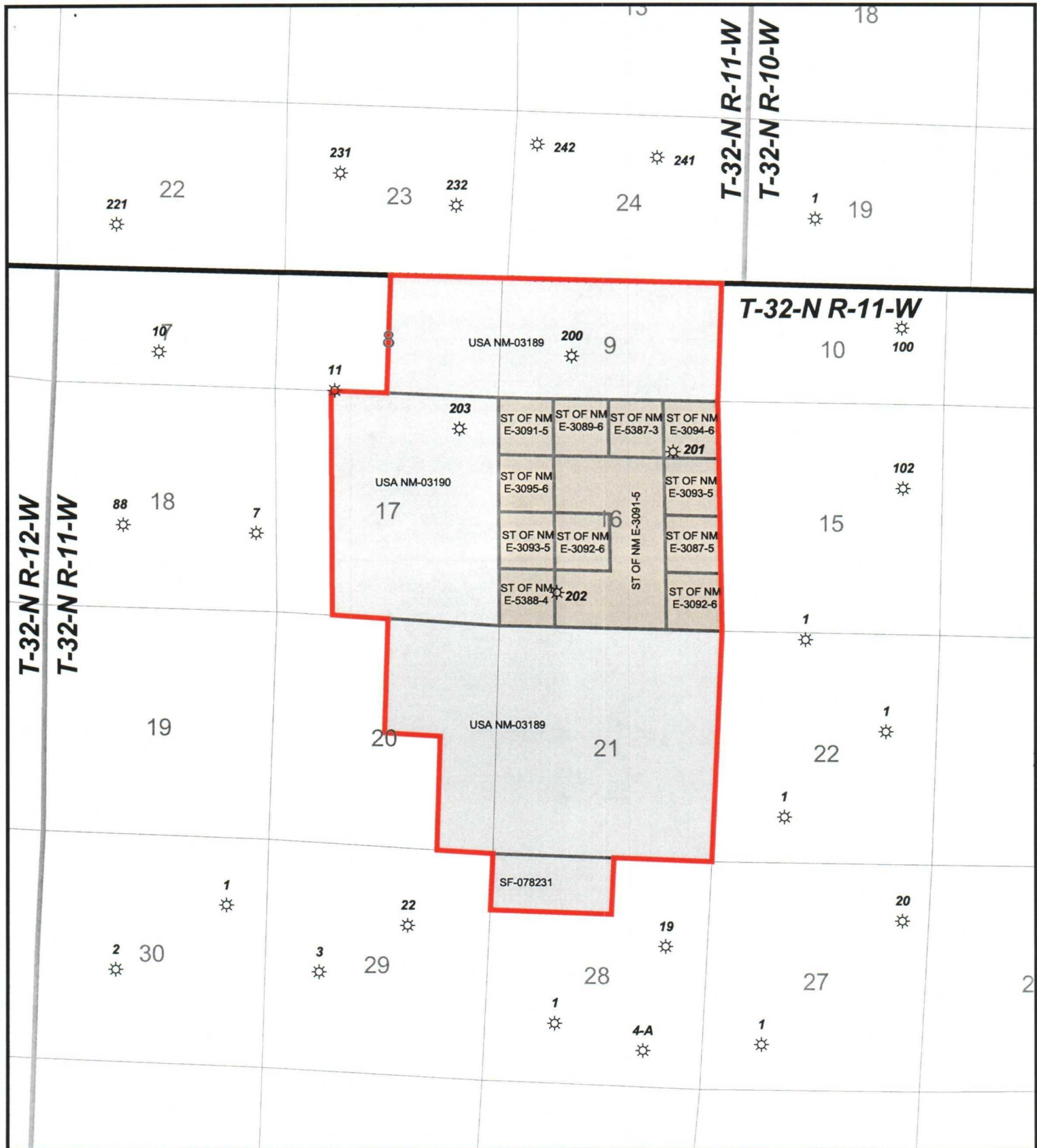
The foregoing approvals are for the 2004 Plan of Development for the Cox Canyon Unit I,
Sec.No.946, San Juan County, New Mexico.

**WORKING INTEREST OWNERS
COX CANYON UNIT**

BP America Production Company
Attn: Bryan Anderson
501 Westlake Park Boulevard (77079)
P.O. Box 3092
Houston, TX 77253-3092

Burlington Resources
Attn: Land Department
P. O. Box 4289
Farmington, NM 87499-4289

ConocoPhillips Company
Attn: Chief Landman, San Juan/Rockies
P. O. Box 2197
Houston, TX 77252



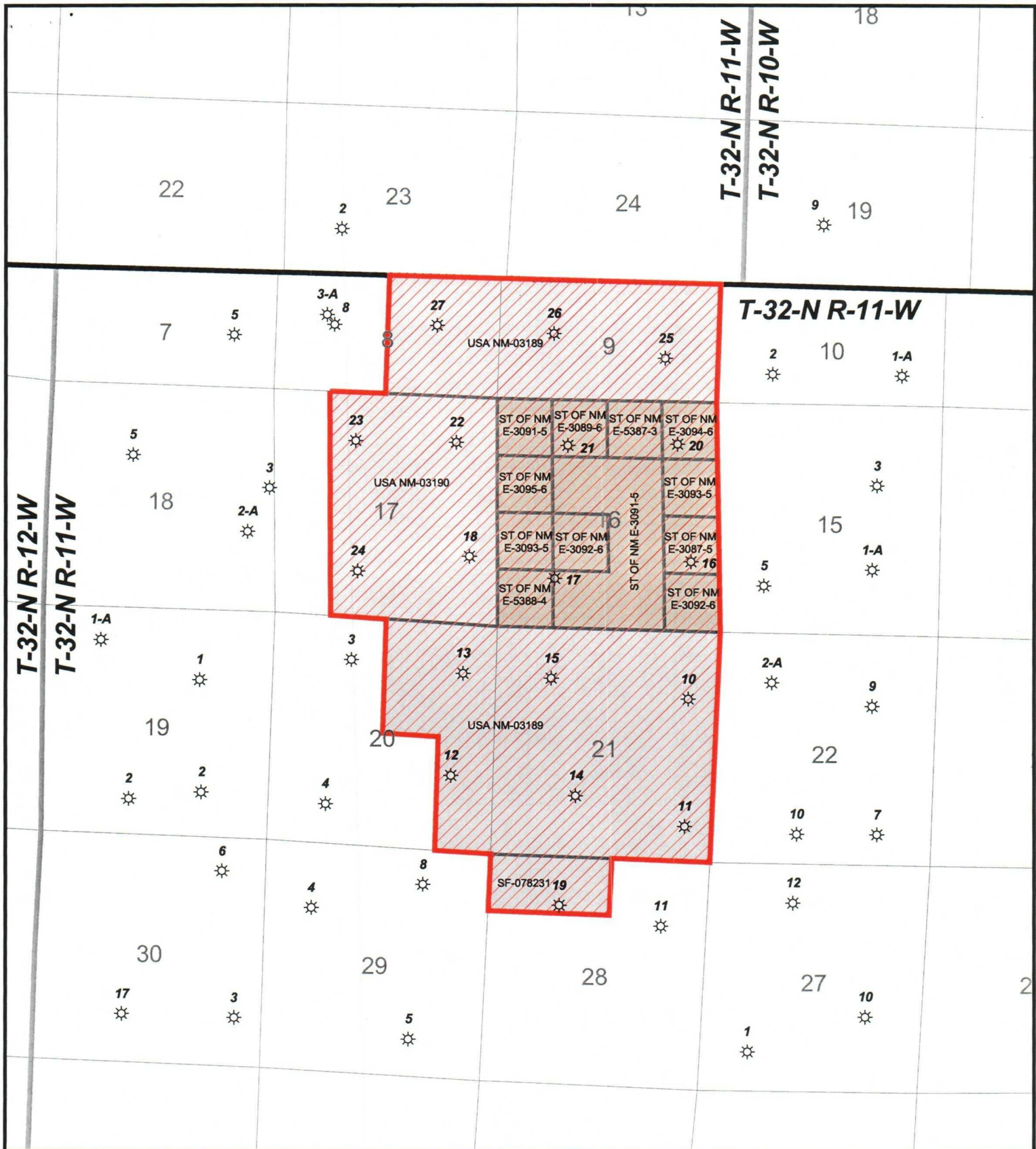
- ☼ Fruitland Wells
- ☐ Cox Canyon Unit
- Mineral Ownership
 - ☐ Federal
 - ☐ State



Williams Exploration & Production **Williams**

Cox Canyon Unit
San Juan County, New Mexico

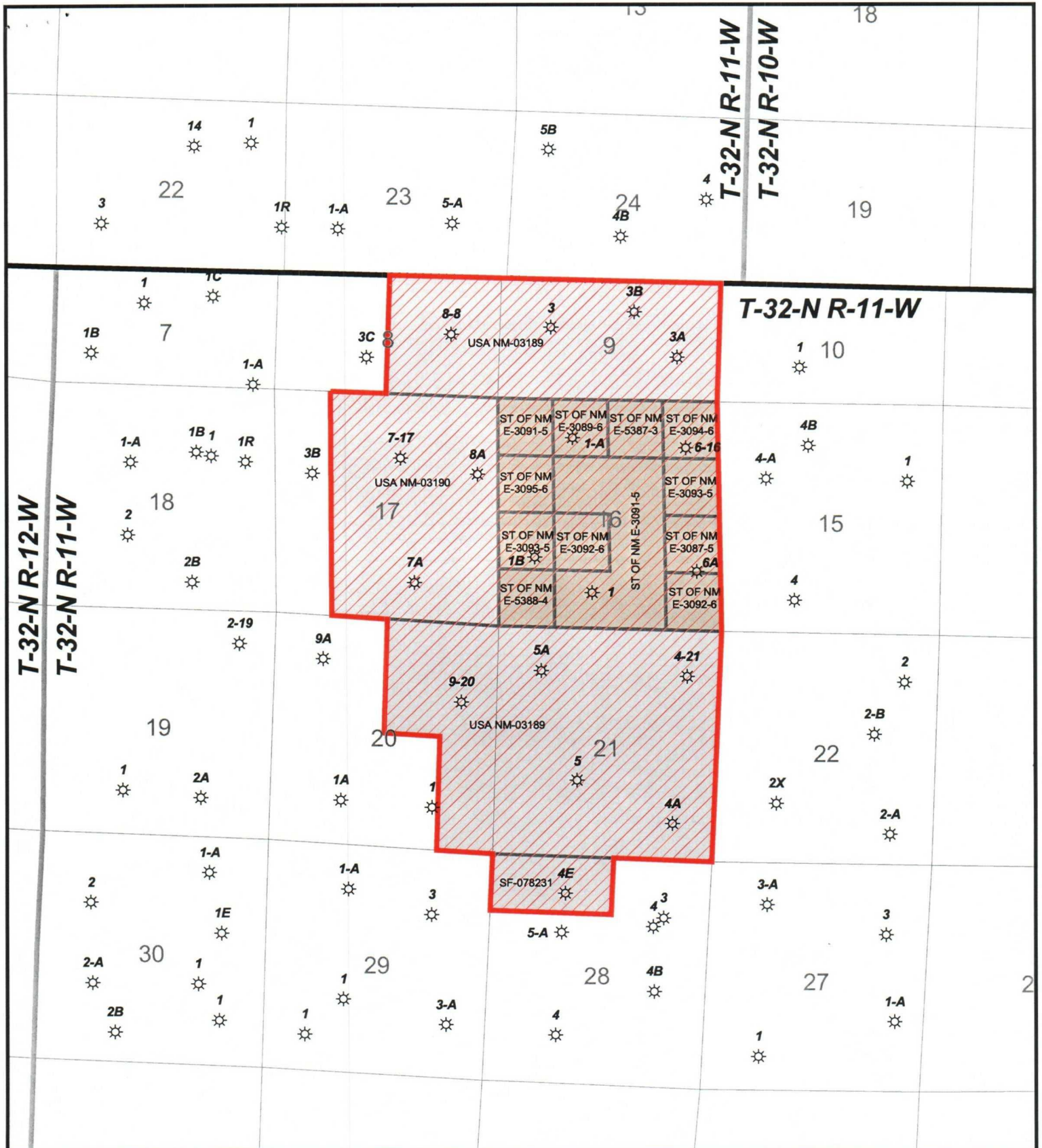
Scale: 1:36000	Projection: UTM - 1983 Zone 13
Date: 01/09/2004	Author: Chuck Fessler



- ☼ Pictured Cliffs Wells
 - ▨ Participating Area
 - ▭ Cox Canyon Unit
- Mineral Ownership
- ▭ Federal
 - ▭ State



Exploration & Production	
Cox Canyon Unit San Juan County, New Mexico	
Scale: 1:36000	Projection: UTM - 1983 Zone 13
Date: 01/09/2004	Author: Chuck Fessler



T-32-N R-11-W

T-32-N R-12-W
T-32-N R-11-W

T-32-N R-11-W

Exploration & Production	
Cox Canyon Unit San Juan County, New Mexico	
Scale: 1:36000	Projection: UTM - 1983 Zone 13
Date: 01/09/2004	Author: Chuck Fessler

- Mesaverde Wells
- Participating Area
- Cox Canyon Unit
- Mineral Ownership**
- Federal
- State





PATRICK H. LYONS
COMMISSIONER

State of New Mexico
Commissioner of Public Lands

310 OLD SANTA FE TRAIL
P.O. BOX 1148
SANTA FE, NEW MEXICO 87504-1148

COMMISSIONER'S OFFICE

Phone (505) 827-5760
Fax (505) 827-5766
www.nmstatelands.org

December 19, 2003

Williams Production Company
P.O. Box 3102
One Williams Center
Tulsa, Oklahoma 74101

Attn: Mr. M. Vern Hansen

Re: 2003 Plan of Development
Cox Canyon Unit
San Juan County, New Mexico

Dear Mr. Hansen:

The Commissioner of Public Lands has, of this date, approved the above-captioned Plan of Development. Our approval is subject to like approval by all other appropriate agencies.

If you have any questions or if we may be of further help, please contact Pete Martinez at (505) 827-5791.

Very truly yours,

PATRICK H. LYONS
COMMISSIONER OF PUBLIC LANDS

for  BY:

JAMI BAILEY, Director
Oil, Gas and Minerals Division
(505) 827-5744

PL/JB/cpm
xc: Reader File

OCD

BLM

RECEIVED

DEC 31 2003

Oil Conservation Division
1220 S. St. Francis Drive
Santa Fe, NM 87505