

DAKOTA

Original SIBHP = 2,516 psi, $Z_i = 0.882$, $P/Z = 2,852$

Current SIBHP = 746 psi, $Z_c = 0.940$, $P/Z = 794$

30% of Original SIBHP Remaining

Average CUM = 2,329 mmcf

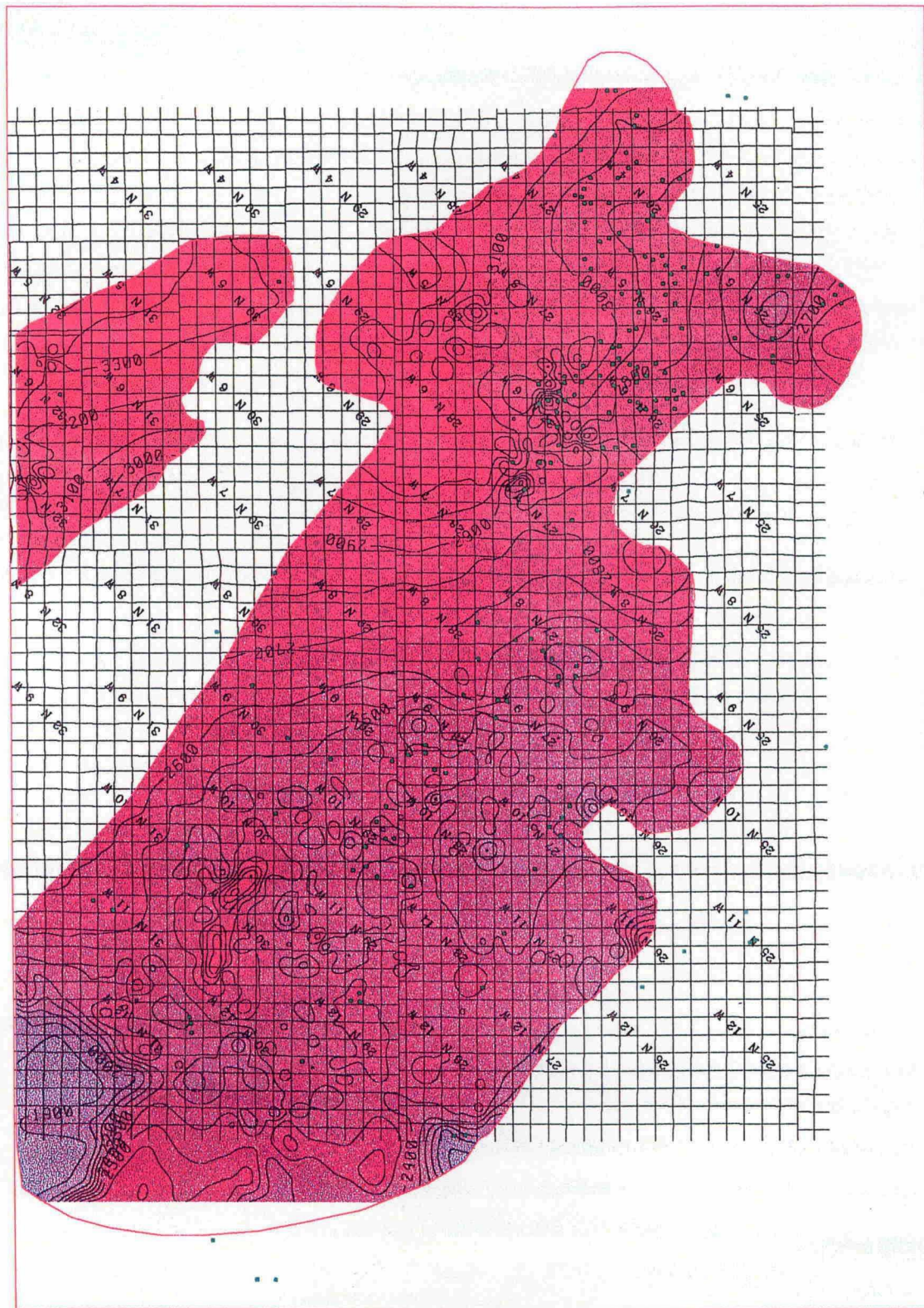
CUM vs P/Z SLOPE = $2,329 / (2,852 - 794) = 1.13$ mmcf / psi

$P_{abd} = 150$ psi, $Z_{abd} \sim 1.0$

Rem Reserves = $1.13 \text{ mmcf/psi} * (794 - 150) = 729$ mmcf

24% of EUR Remaining

Current Average Production = 85 mcf/d



DAKOTA FIRST SIBHP

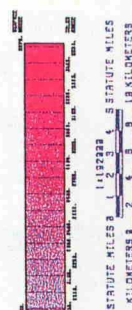
Scale: 1" = 1000'

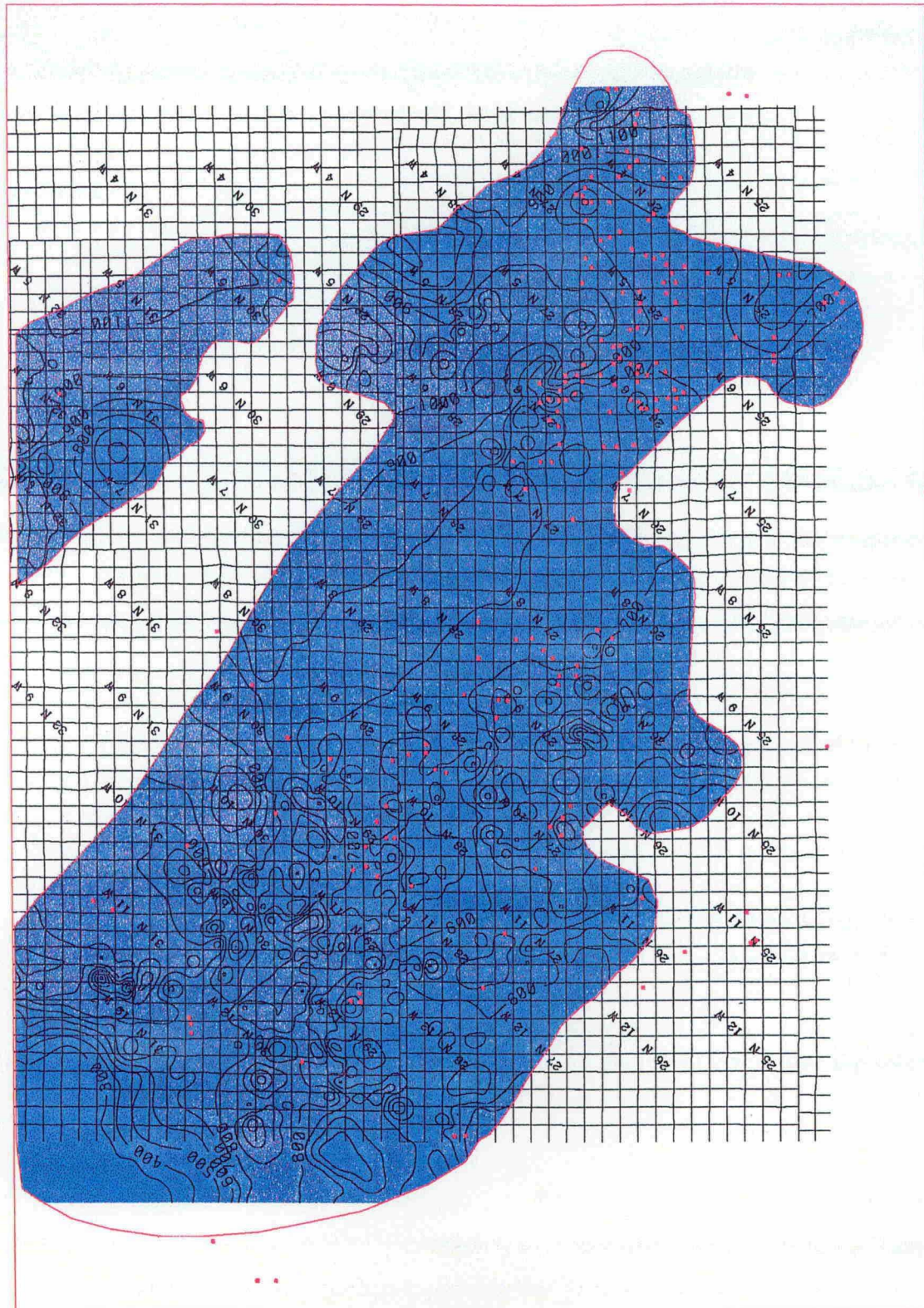
North Arrow

Legend

Source: USGS, 1981

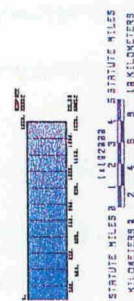
Map: 2-021-95





DAKOTA LAST SIBHP

Scale 1:100,000	Sheet 100	Zone 18N	UTM 18N
UTM 18N	UTM 18N	UTM 18N	UTM 18N



DAKOTA

OPERATING EXPENSES = \$540/MONTH
CAPITAL EXPENSES (M\$)

1. SINGLE COMPLETION:

	<u>TANGIBLE</u>	<u>INTANGIBLE</u>	<u>TOTAL</u>
DRILLING	\$ 76.90	\$222.80	\$299.70
COMPLETION	\$ 26.40	\$110.00	\$136.40
FACILITIES	\$105.80	\$ 0.00	\$105.80
TOTAL	\$209.10	\$332.80	\$541.90

2. DUAL COMPLETION:

	<u>TANGIBLE</u>	<u>INTANGIBLE</u>	<u>TOTAL</u>
DRILLING	\$56.10	\$161.00	\$217.10
COMPLETION	\$30.40	\$121.70	\$152.10
FACILITIES	\$92.60	\$ 0.00	\$ 92.60
TOTAL	\$179.10	\$282.70	\$461.80

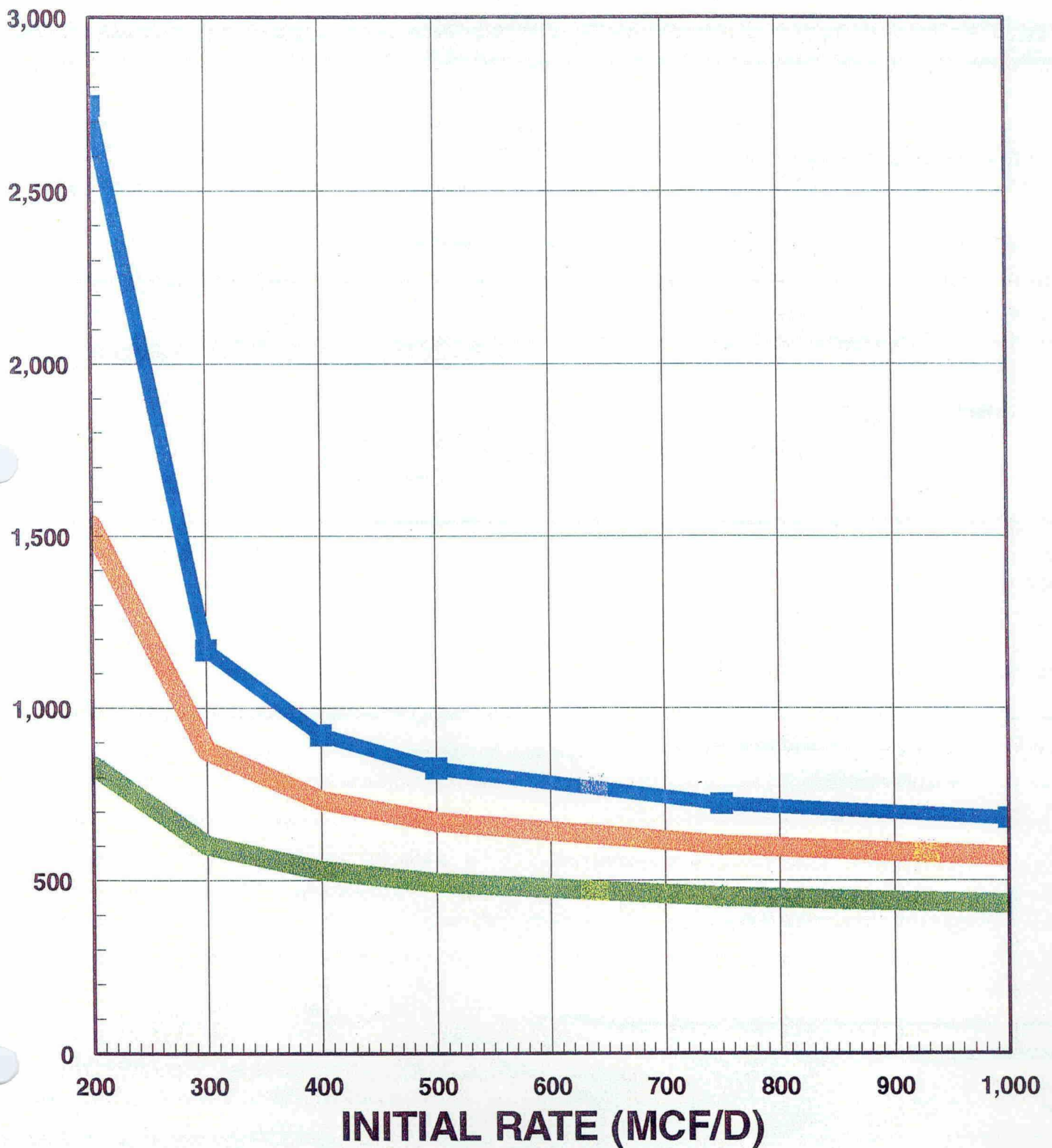
3. COMMINGLED COMPLETION:

	<u>TANGIBLE</u>	<u>INTANGIBLE</u>	<u>TOTAL</u>
DRILLING	\$40.50	\$141.30	\$181.80
COMPLETION	\$16.50	\$118.30	\$134.80
FACILITIES	\$48.00	\$ 0.00	\$48.00
TOTAL	\$105.00	\$259.60	\$364.60

DAKOTA



EUR (MMCF)



DAKOTA



TESTED & ABANDONED



COMMINGLE

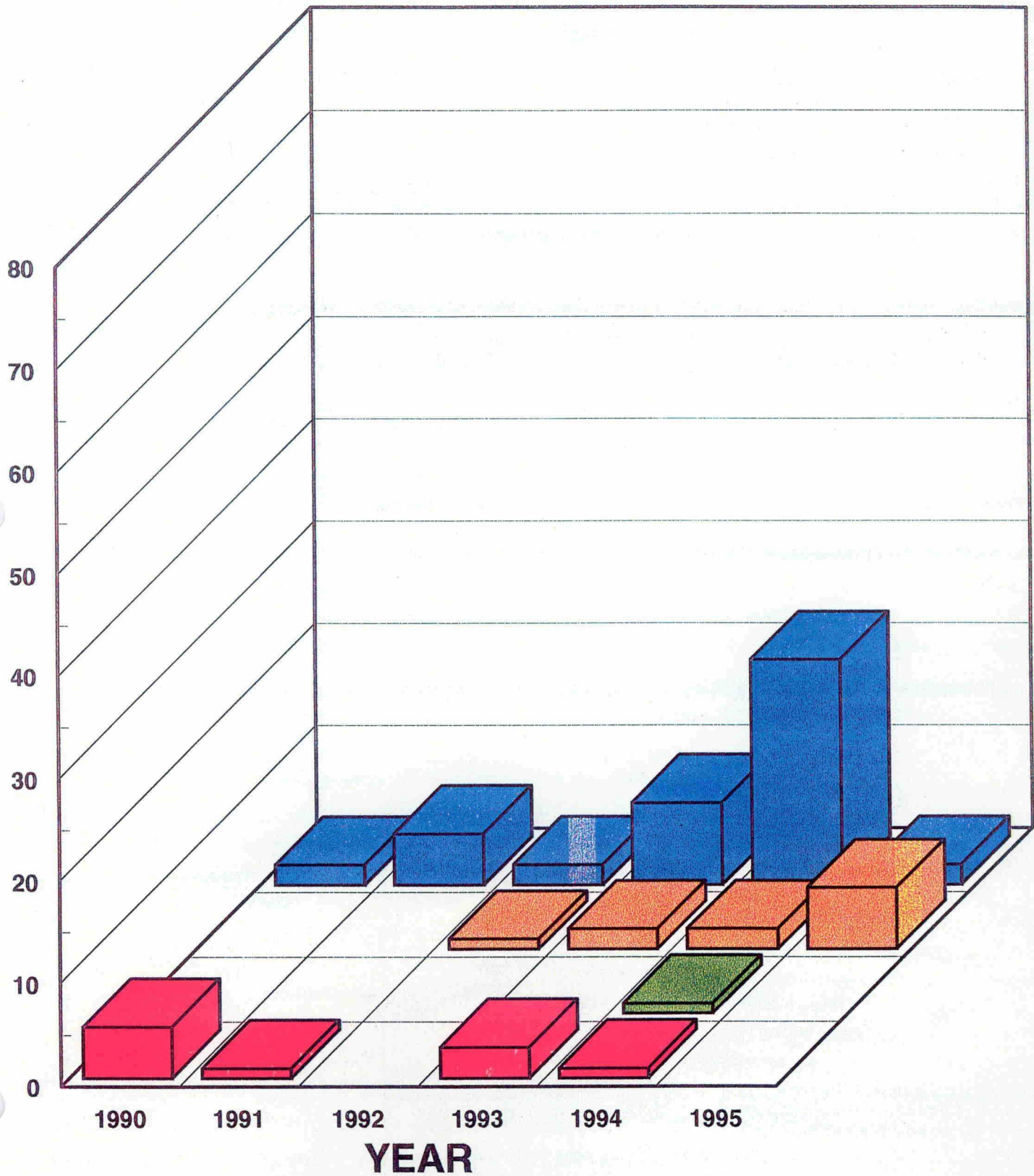


DUAL



SINGLE

OF COMPLETIONS



DAKOTA

# OF COMPLETIONS (1990 - 1995)	63
# OF UNDEVELOPED DRILL BLOCKS (UDDB's)	2,246
PERCENTAGE OF UDDB's DEVELOPED PER YEAR	0.5%
YEARS REQUIRED TO DEVELOP UDDB'S	214
CAPITAL REQ'D PER UDDB (COMMINGLED) M\$	365
TOTAL CAPITAL REQ'D MMS	820
EUR PER UDDB MMCF	729
RESERVES DEVELOPED BCF	1,637
ROYALTIES @12.5% MM\$	383
ADVELORUM & SEVERANCE TAX @8% MM\$	210
OPERATING EXPENSES MM\$	674
INCOME TAX @38% MM\$	309