

## PLUGGING PROCEDURE

Lobo Production Co.  
Gulf State 36-1  
A-36-23N-06W  
30-043-20660

Presumed downhole conditions and equipment  
See attached schematic

Pull all production equipment and nipple up BOP

1. Go in hole with tbg. and set a plug from PBTD of 5557 ft. to 4980 ft. WOC & tag cement.
2. Load hole with 8.4 lb. 40 visc. Mud and test casing.
3. Pull tbg. To 4200 ft. and spot a plug from 4200 ft to 3940 ft.
4. Pull tbg. To 1980 ft. And spot a plug from 1980 ft. To 1365 ft.
5. Pull tbg. To 260 ft. And spot a plug from 260 ft. To surface
6. Top off csg. with cement and set a dry hole marker.
7. Restore location .

OPERATOR LOBO PRODUCTION CO.		PROPERTY NAME GULF STATE	WELL NO. 36 #1
DATE 7-28-95	LOCATION ULSTR) A-36-23N-06W	FOOTAGE 850 FNL & 800 FEL	
API NO. 30-043-20660		POOL GALLUP	

Tops	
OJO ALAMO	1415 FT.
PICTURE CLIFF	1930 FT.
CHACRA	
CLIFF HOUSE	3990 FT.
PT. LOOKOUT	4152 FT.
MANCOS	4370 FT.
GALLUP	5037 FT.

**CASING RECORD:**

8 5/8 24# 210 FT. 12 1/4 hole

200 sxs, Calc. Surf.

4 1/2 10.5 5605FT. 7 7/8 hole

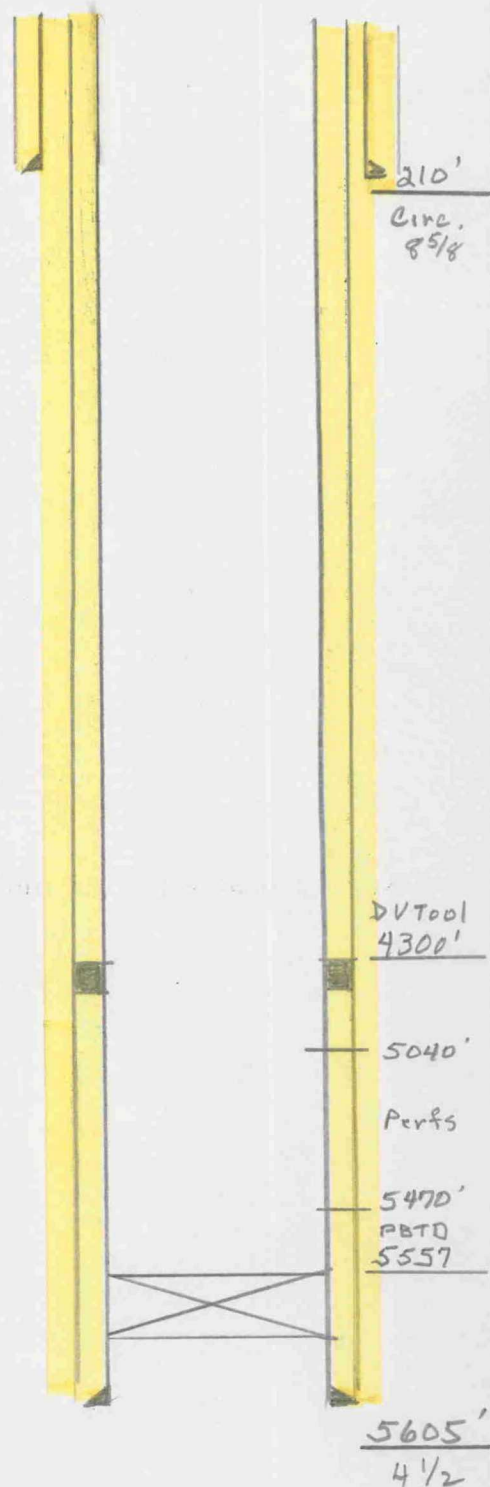
DV TOOL 4300 FT.

1ST.STAGE 230 SXS.CLASS B , 6 1/4 # GILSONITE ,  
8# SALT, 1/4 FLOCELE & 2 % Ca Cl. Calc. cine ,

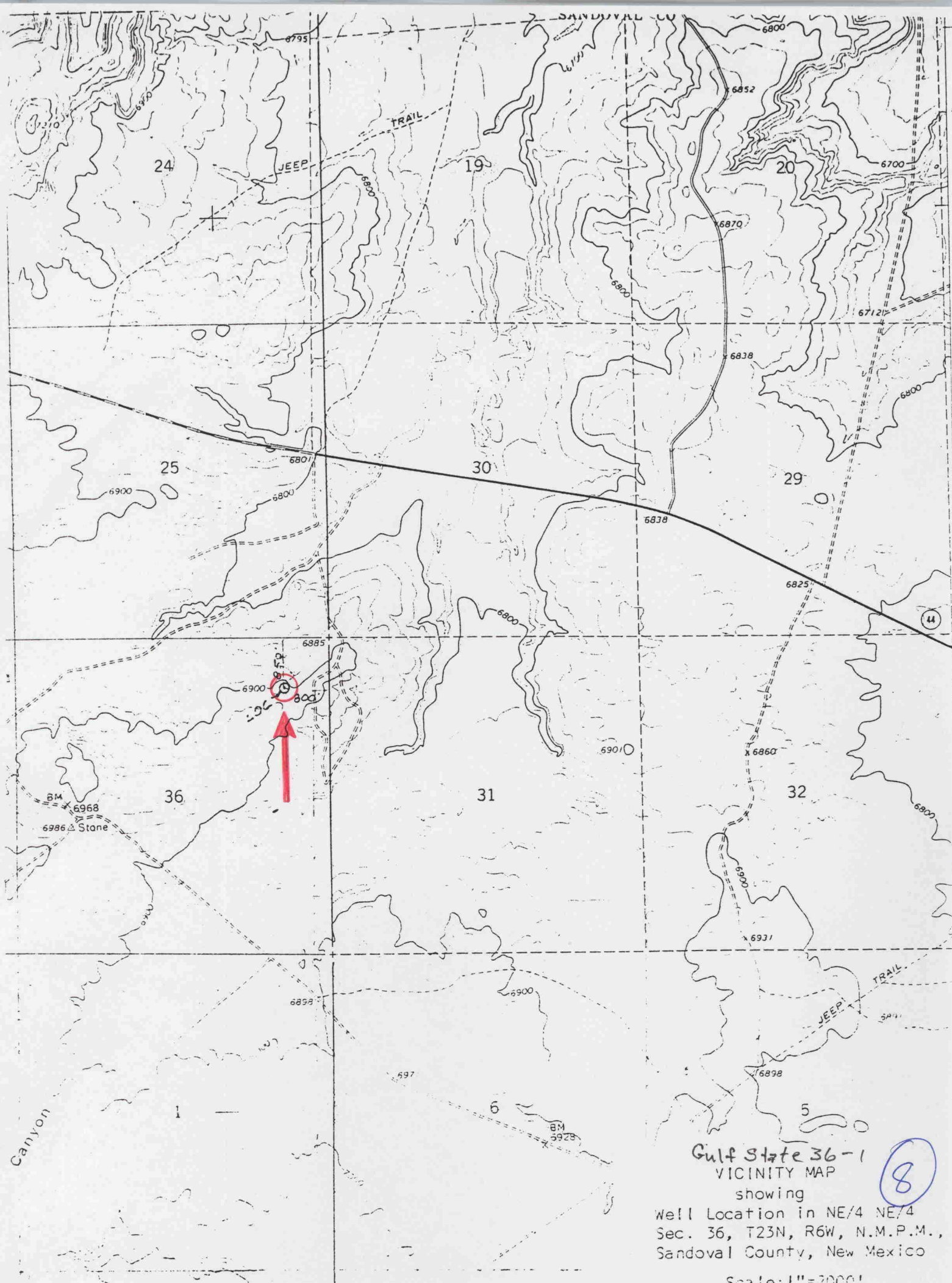
2ND. STAGE 700 SXS. 65/35 POZ. W/ 67. GEL. , 10 LB.  
GILSONITE & 50 SXS. CLASS B NEAT Calc. surf.

PERFS. 5378 FT.- 5470 FT.  
5040' - 5300'

PBTD 5557 FT.



7



Gulf State 36-1  
VICINITY MAP

showing  
Well Location in NE/4 NE/4  
Sec. 36, T23N, R6W, N.M.P.M.,  
Sandoval County, New Mexico

Scale: 1"=2000'



