

PLUGGING PROCEDURE

Lobo Production Co.
Libra #1
C-16-32N-13W
30-045-25852

Presumed downhole conditions and equipment
See attached schematic

Pull all production equipment and nipple up BOP

1. Go in hole with tbgs. and set a plug from PBTD of 3568 ft. to 2470 ft. WOC & tag cement.
2. Load hole with 8.4 lb. 40 visc. Mud and test casing.
3. GIH with csg cutter and cut 3 ½ csg. At 1716 ft. & pull 3 ½ csg.
4. GIH with tbgs. To 1766 ft. And spot a plug from 1766 ft. To 1616 ft. WOC & tag cement.
5. Pull tbgs. To 170 ft. & circ cement to surface.
6. Top off csg. with cement and set a dry hole marker.
7. Restore location .

OPERATOR LOBO PRODUCTION CO.		PROPERTY NAME LIBRA	WELL NO. 1
DATE 7-26-95	LOCATION ULSTR) C-16-32N-13W	FOOTAGE 810 FNL & 1800 FWL	
API NO. 30-045-25852		POOL GALLUP-DAKOTA	

Tops				
CLIFF HOUSE				
POINT LOOKOUT	1090 FT.			
MANCOS	1430 FT.			
GALLUP	2520 FT.			
DAKOTA	3364 FT.			
CASING RECORD: 8 5/8 23# 120 FT. 12 1/4 hole 90 sxs, Class B Calc Top Surf. 5 1/2 17 # 1666 FT. 7 7/8 hole 180 SXS. CIRC TO SURF. 3 1/2 9.2 # 3568 FT. 4 3/4 HOLE 80 SXS. CLASS B CEMENT WITH 1/4 # FLOCELE PERFS. 3444-3546 & 2522-2924				

120'
T.O.C.
surf
calc.

1666'
5 1/2
CIRC.

T.O.C
2226'
Calc.

2522'
Perfs
2924'

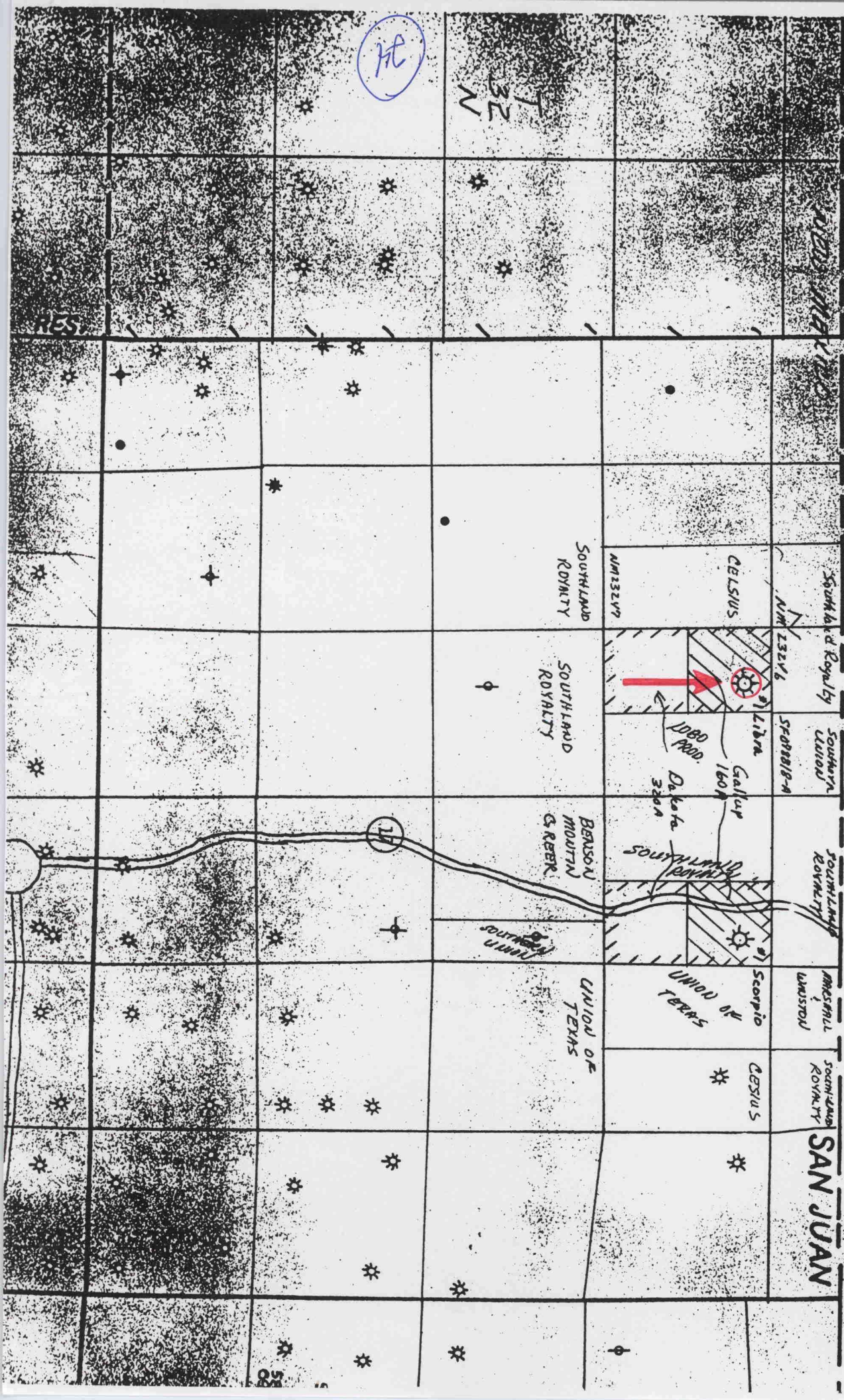
3444'
Perfs
3546'
3568'
3 1/2

COLD RIVER

R 13 W

C-16-32N-13W
Libra # 1

FIGURE





75