

OPERATOR LOBO PRODUCTION CO.		PROPERTY NAME HYNES-KENNEDY	WELL NO. 7 - 1
DATE 7-26-95	LOCATION ULSTR) O-7-29N-14W	FOOTAGE 800 FSL & 1885 FEL	
API NO. 30-045-25599		POOL GALLUP	

Tops	PC	320 FT.
	CLIFF HOUSE	1445 FT.
	POINT LOOKOUT	3012 FT.
	MANCOS	3265 FT.
	GALLUP	4230 FT.

CASING RECORD:

8 5/8 23# 213 FT. 12 1/4 hole

300 sxs, Class B calc. Top Surface

4 1/2 10.5 4847 FT. 7 7/8 hole

DV TOOL 3280 FT.

1 st. STAGE 250 SXS. 50-50 2 % GEL, 6 1/4

GILSONITE & 6LB. SALT Calc. top 3293'

2 nd. STAGE 450 SXS. CLASS B CEMENT &

50-50 Poz 2% gel 50 SXS. WITH 2 % CA.CL.

6 1/4" gilsonite + 6 lb salt Calc. Top. 376'

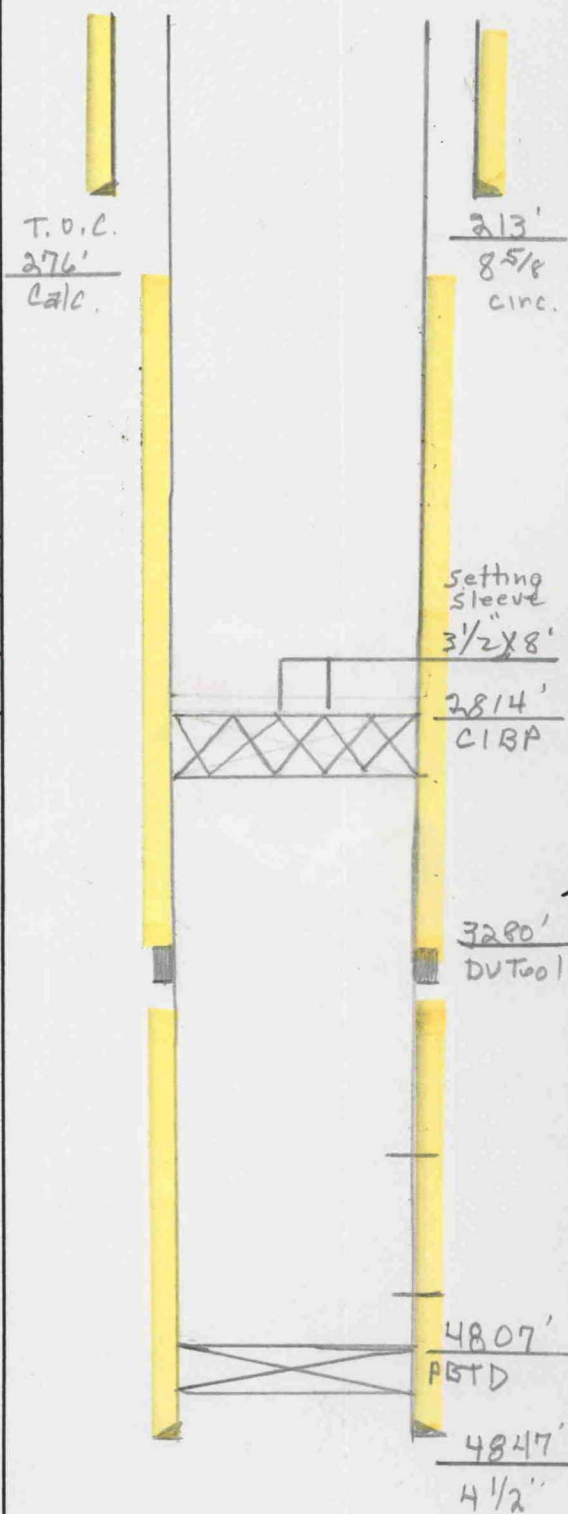
PERFS 2626 FT. - 2646 FT.

PERFS 4235 FT. - 4715 FT.

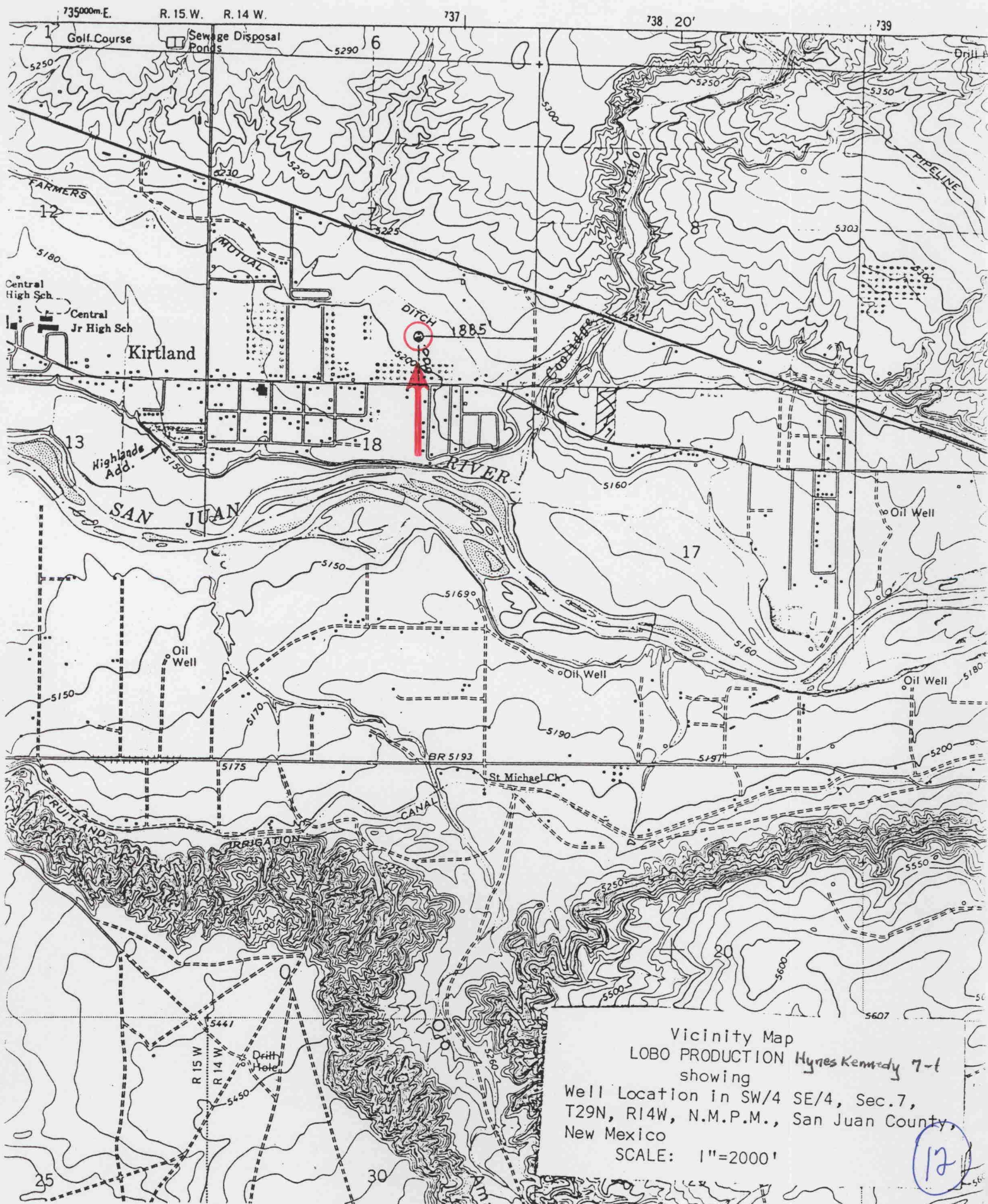
PBTD 4807 FT.

SET CIBP @ 2814 FT. LEFT SETTING
SLEEVE 3 1/8 X 8 FT. ON PLUG

PBTD 4807'



UNITED STATES
DEPARTMENT OF THE INTERIOR
GEOLOGICAL SURVEY



Vicinity Map
LOBO PRODUCTION Hynes Kennedy 7-1
showing
Well Location in SW/4 SE/4, Sec. 7,
T29N, R14W, N.M.P.M., San Juan County,
New Mexico
SCALE: 1"=2000'

12

PLUGGING PROCEDURE

Lobo Production Co.
Hynes-Kennedy 7-1
O-7-29N-14W
30-045-25599

Presumed downhole conditions and equipment
See attached schematic

Pull all production equipment and nipple up for BOP

1. Go in hole and fish setting tool sleeve. Drill out CIBP and push to bottom.
2. Go in hole with tbg. and set a plug from PBTD to 4180'. WOC & tag cement.
3. Load hole with 8.4 lb. 40 visc. Mud and test casing.
4. Pull tbg. To 1520 ft. and spot a plug from 1520 ft to 1370 ft.
5. Pull tbg. To 515 ft. And spot a plug from 515 ft. To 295 ft.
6. Pull tbg. and go in hole with wireline to 260'. Perforate. with 2 shots.
7. Pump cement down 4 ½ csg. and circulate cement to surface.
8. Top off csg. with cement and set a dry hole marker.
9. Restore location .





(17) cont



(17)