

STATE OF NEW MEXICO
ENERGY, MINERALS AND NATURAL RESOURCES DEPARTMENT
OIL CONSERVATION DIVISION

IN THE MATTER OF THE HEARING
CALLED BY THE OIL CONSERVATION
DIVISION FOR THE PURPOSE OF
CONSIDERING:

APPLICATION OF YATES PETROLEUM
CORPORATION FOR THE PROMULGATION OF
SPECIAL RULES AND REGULATIONS FOR THE
SOUTH PECOS SLOPE-ABO GAS POOL,
CHAVES COUNTY, NEW MEXICO.

CASE NO. 11421

APPLICATION OF YATES PETROLEUM
CORPORATION FOR THE PROMULGATION OF
SPECIAL RULES AND REGULATIONS FOR THE
WEST PECOS SLOPE-ABO GAS POOL,
CHAVES COUNTY, NEW MEXICO.

CASE NO. 11422

IN THE MATTER OF CASE NOS. 10793, 10981 AND 11004
BEING REOPENED PURSUANT TO THE PROVISIONS
OF DIVISION ORDER NOS. R-9976 AND R-9976-A,
WHICH ORDERS ESTABLISHED A "PILOT INFILL
DRILLING PROGRAM" IN THE PECOS SLOPE-
ABO GAS POOL IN PORTIONS OF TOWNSHIPS 5,
6, and 7 SOUTH, RANGES 25 AND 26 EAST,
CHAVES COUNTY, NEW MEXICO.

CASE NOS. 10793,
10981 AND 11004

AFFIDAVIT

STATE OF NEW MEXICO)
) SS.
COUNTY OF EDDY)

Mecca Mauritsen, authorized representative of Yates Petroleum Corporation, the Applicant
herein, being first duly sworn, upon oath, states that notice has been given to all interested

E. L. #5

persons entitled to receive notice of this application under Oil Conservation Division rules, and that notice has been given at the addresses shown on Exhibit "A" attached hereto.

Mecca Mauritsen
Mecca Mauritsen

SUBSCRIBED AND SWORN to before me this 31st day of October, 1995.

Darlene Chavarria
Notary Public

My Commission Expires:

9-15-1999

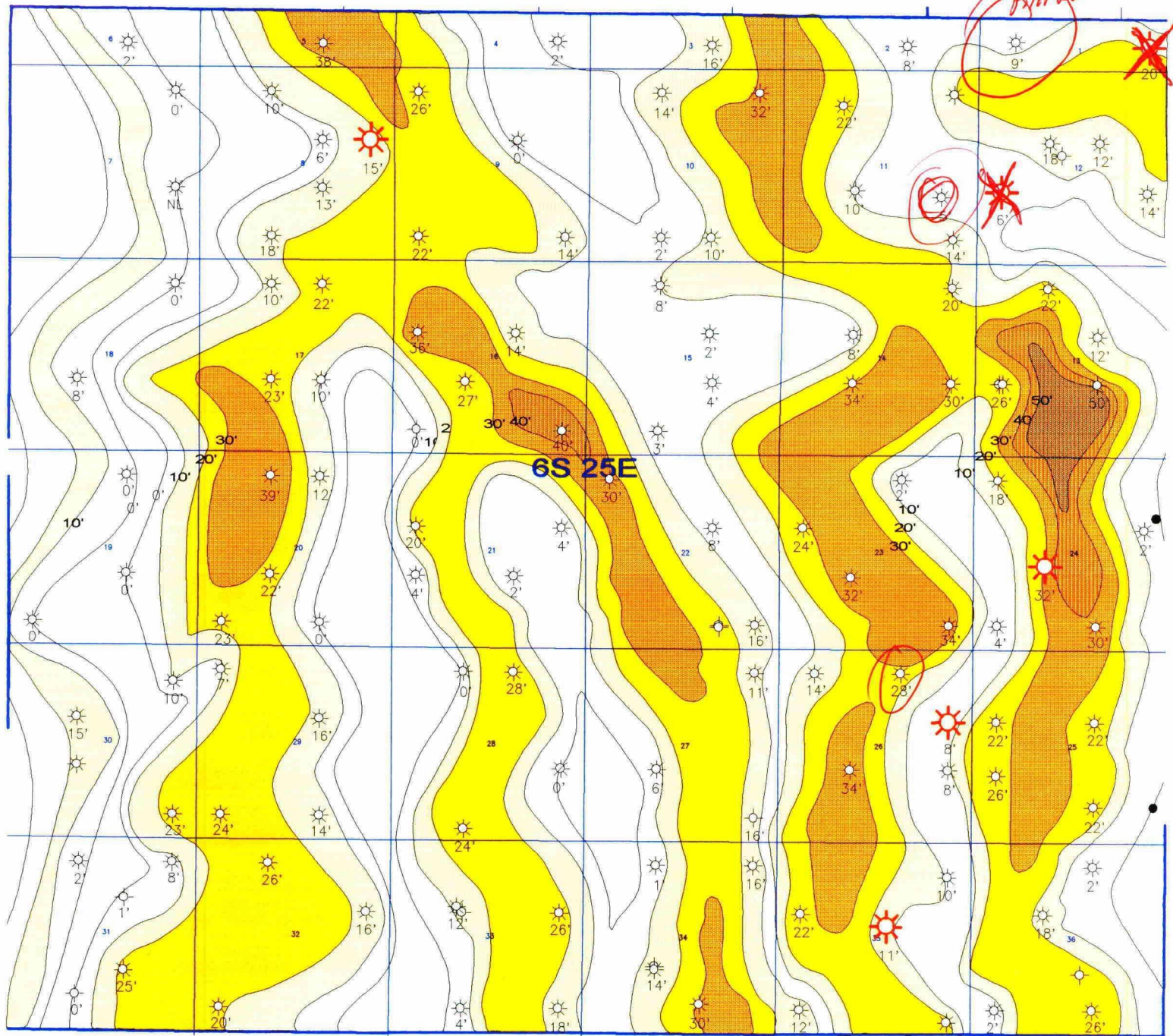
**BEFORE THE
OIL CONSERVATION DIVISION**
Roswell, New Mexico

Case Nos. 10793, 10981 and 11004 (Reopened)
and 11421 and 11422 Consolidated


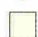
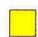



Exhibit No. 5

Submitted by: Yates Petroleum Corporation

Hearing Date: November 2, 1995



LEGEND

-  PILOT INFILL WELLS
-  10' - 20'
-  20' - 30'
-  30' - 40'
-  40' - 50'
-  50' +

Yates Petroleum Corporation

A - ZONE PAY SAND ISOPACH
T6S-R25E
NEW MEXICO

GEOL: D. FLY

11/1/95

C.I. = 10'

Scale 1:48000.

VMAZONE.GPF

Exhibit #6

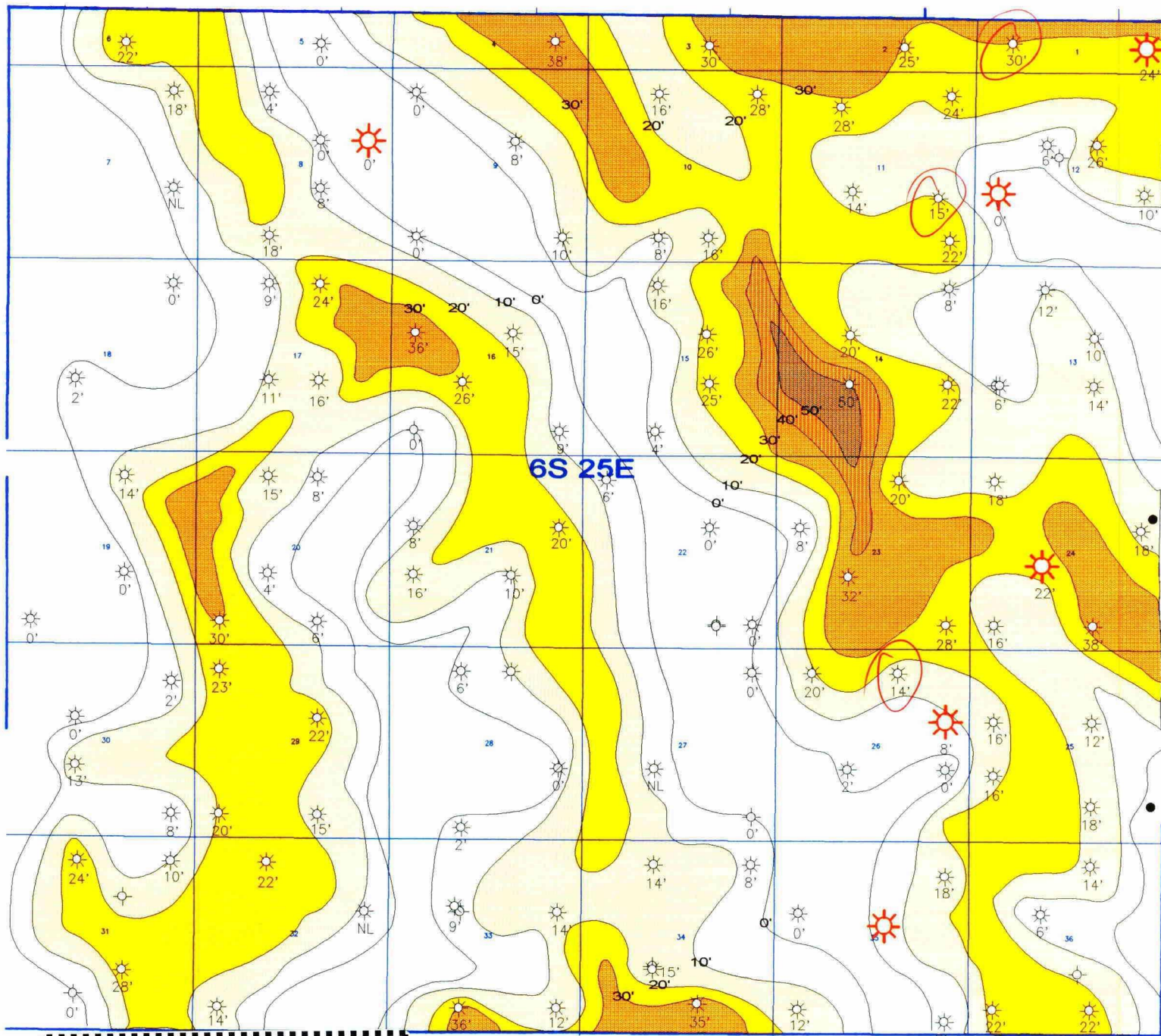
**BEFORE THE
OIL CONSERVATION DIVISION**
Roswell, New Mexico

Case Nos. 10793, 10981 and 11004 (Reopened)
and 11421 and 11422 Consolidated

Exhibit No. 6

Submitted by: Yates Petroleum Corporation

Hearing Date: November 2, 1995



Examiner Catunach
10793, 10981 + 11004
 Case No. Reopened
11421 + 11422 } consolidated
 EXHIBIT NO.

LEGEND

- PILOT INFILL WELLS
- 10' - 20'
- 20' - 30'
- 30' - 40'
- 40' - 50'
- 50' +

Yates Petroleum Corporation

B - ZONE PAY SAND ISOPACH
 T6S-R25E
 NEW MEXICO

GEOL: D. FLY

11/1/95

C.I. = 10'

Scale 1:48000.

VMB-ZONE.GPF

Exhibit #7

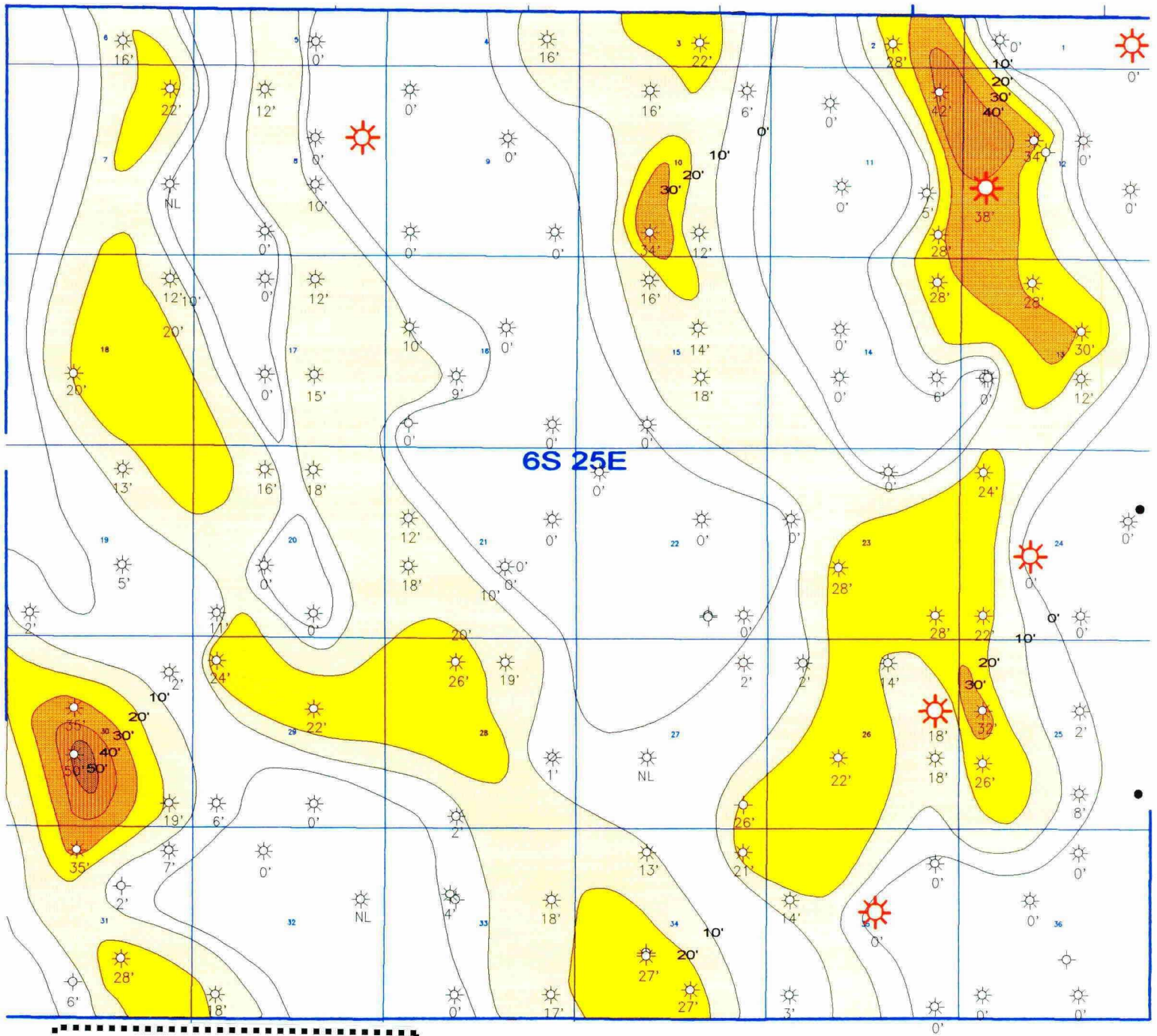
**BEFORE THE
OIL CONSERVATION DIVISION**
Roswell, New Mexico

Case Nos. 10793, 10981 and 11004 (Reopened)
and 11421 and 11422 Consolidated

Exhibit No. 7

Submitted by: Yates Petroleum Corporation

Hearing Date: November 2, 1995



Examiner Catanach
 Case No. 10793, 10981 + 11084
11421 + 11422 Reopened
 EXHIBIT NO. Consolidated
8

LEGEND

- PILOT INFILL WELLS
- 10' - 20'
- 20' - 30'
- 30' - 40'
- 40' - 50'
- 50' +

Yates Petroleum Corporation

C ZONE PAY SAND ISOPACH
 T6S-R25E
 NEW MEXICO

GEOL: D. FLY

11/1/95

C.I. = 10'

Scale 1:48000.

VMC-ZONE.GPF

Exhibit #8

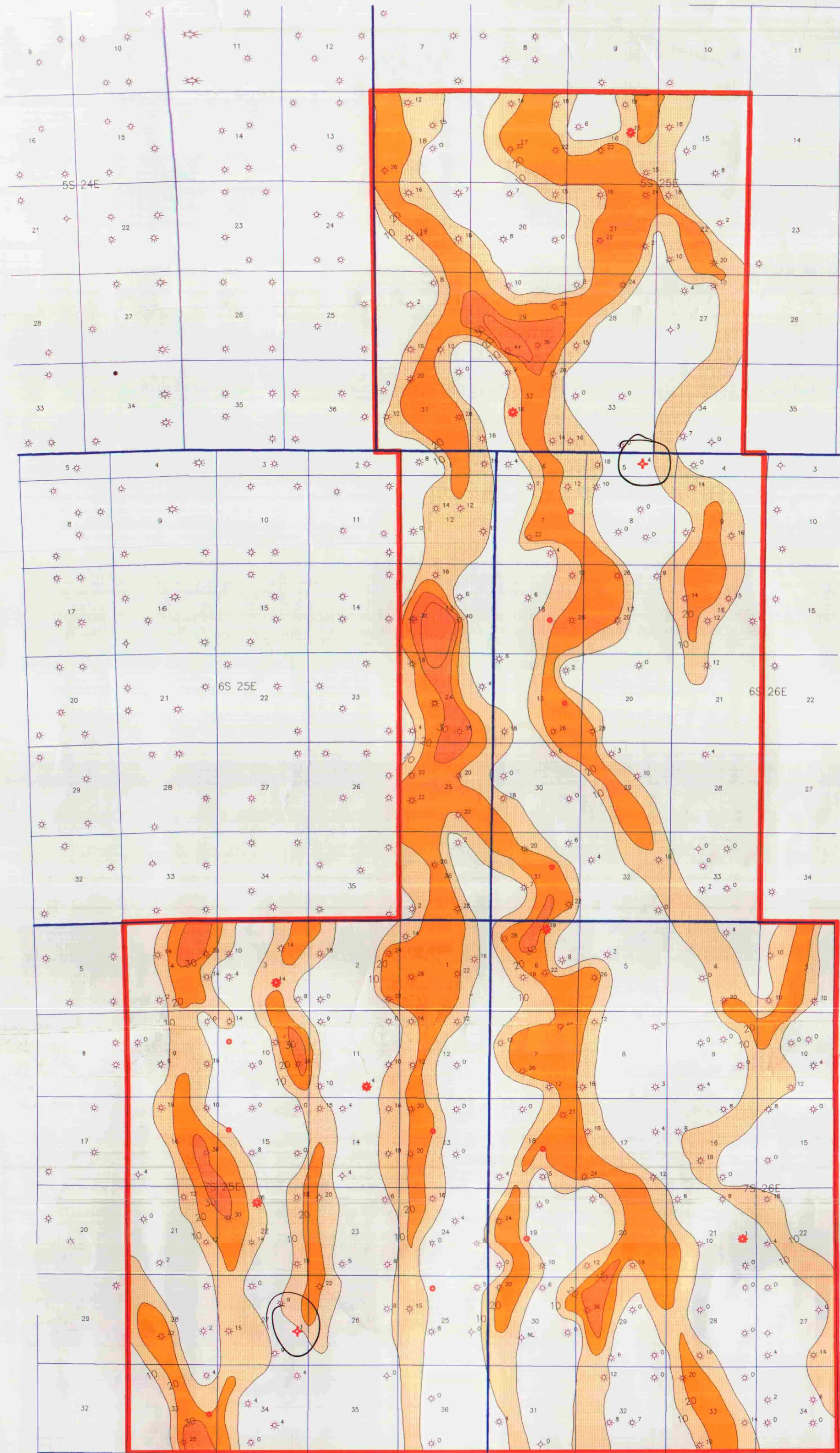
**BEFORE THE
OIL CONSERVATION DIVISION**
Roswell, New Mexico

Case Nos. 10793, 10981 and 11004 (Reopened)
and 11421 and 11422 Consolidated

Exhibit No. 8

Submitted by: Yates Petroleum Corporation

Hearing Date: November 2, 1995



PILOT INFILL WELLS

Examiner Catanach
10793, 10981, 11009
Case No. Reopened
11421 + 11422 consolidated
EXHIBIT NO. 9

Yates Petroleum Corporation

ZONE A
PAY SAND ISOPACH

Geol: D'NESE FLY

C.I. = 10'

11/1/95

Scale 1:60000.

94009-JF

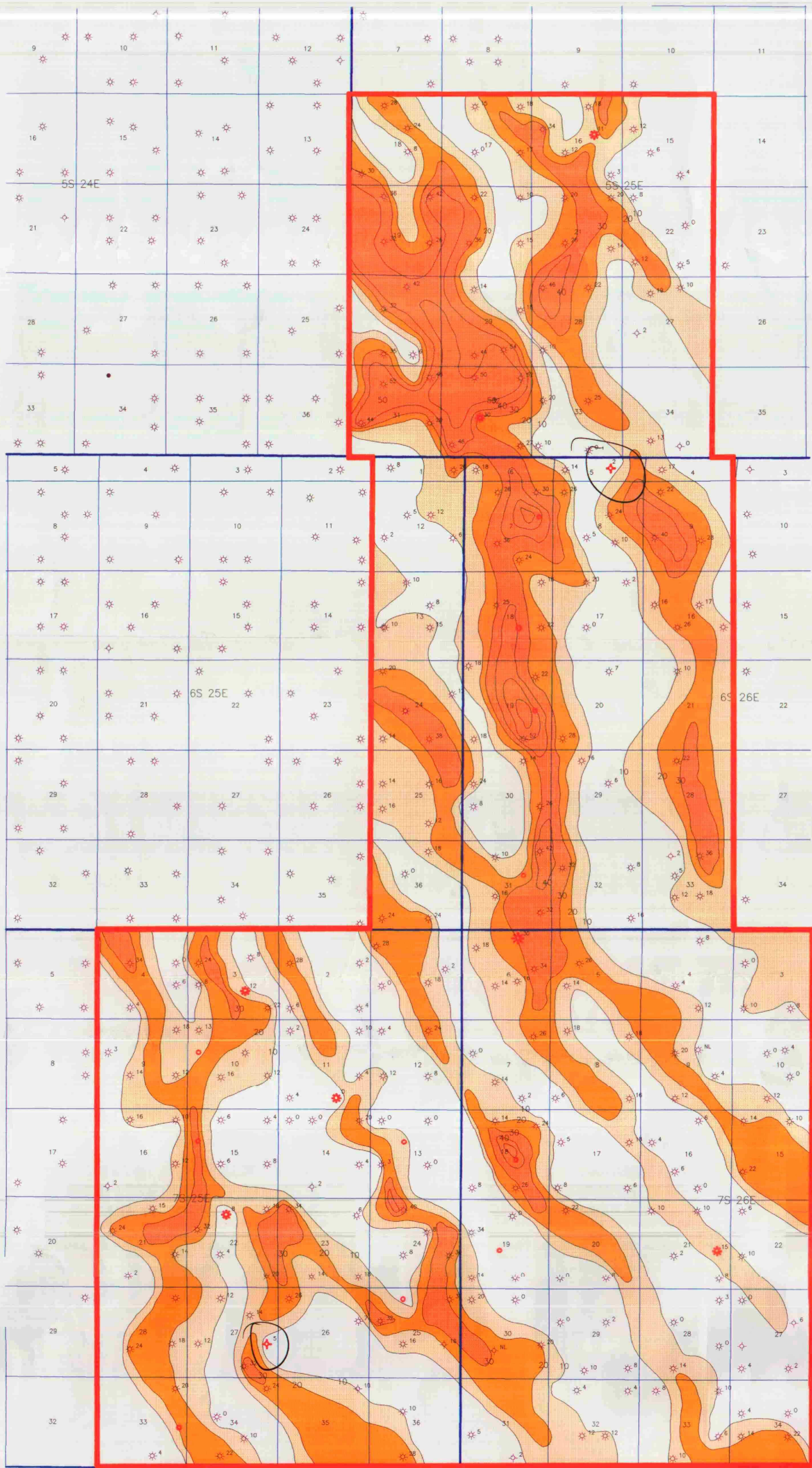
**BEFORE THE
OIL CONSERVATION DIVISION**
Roswell, New Mexico

Case Nos. 10793, 10981 and 11004 (Reopened)
and 11421 and 11422 Consolidated

Exhibit No. 9

Submitted by: Yates Petroleum Corporation

Hearing Date: November 2, 1995



PILOT INFILL WELLS

Examiner Catanach

Case No. 10797, 10981, + 11008

11921 & 11422 Consolidated

EXHIBIT NO. 10

Yates Petroleum Corporation

ZONE B
NET SAND ISOPACH

Geology: D'NESE FLY

11/1/95

Ct: 10"

Scale 1:60000.

94009-lf

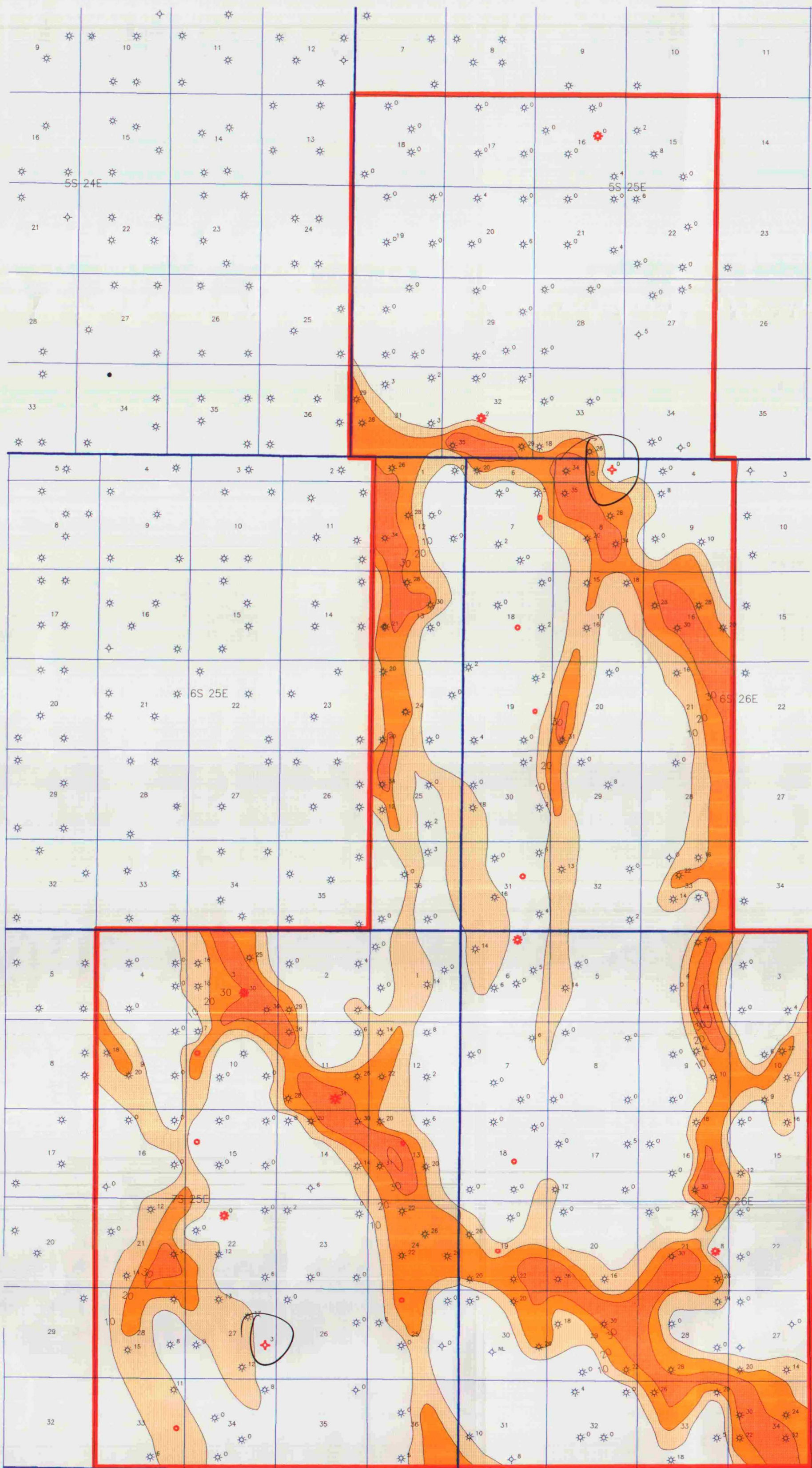
BEFORE THE
OIL CONSERVATION DIVISION
Roswell, New Mexico

Case Nos. 10793, 10981 and 11004 (Reopened)
and 11421 and 11422 Consolidated

Exhibit No. 10

Submitted by: Yates Petroleum Corporation

Hearing Date: November 2, 1995



PILOT INFILL WELLS

Yates Petroleum Corporation

ZONE C
PAY SAND ISOPACH

Examiner Catana
1093, 10951 + 11004
Case No. Reopened
11421 + 11482 Consolidated
EXHIBIT NO. 11

GEOLOGY: D'Nese Fly		
C.I. = 10'		Scale 1:60000.
11/1/95		94009-JF

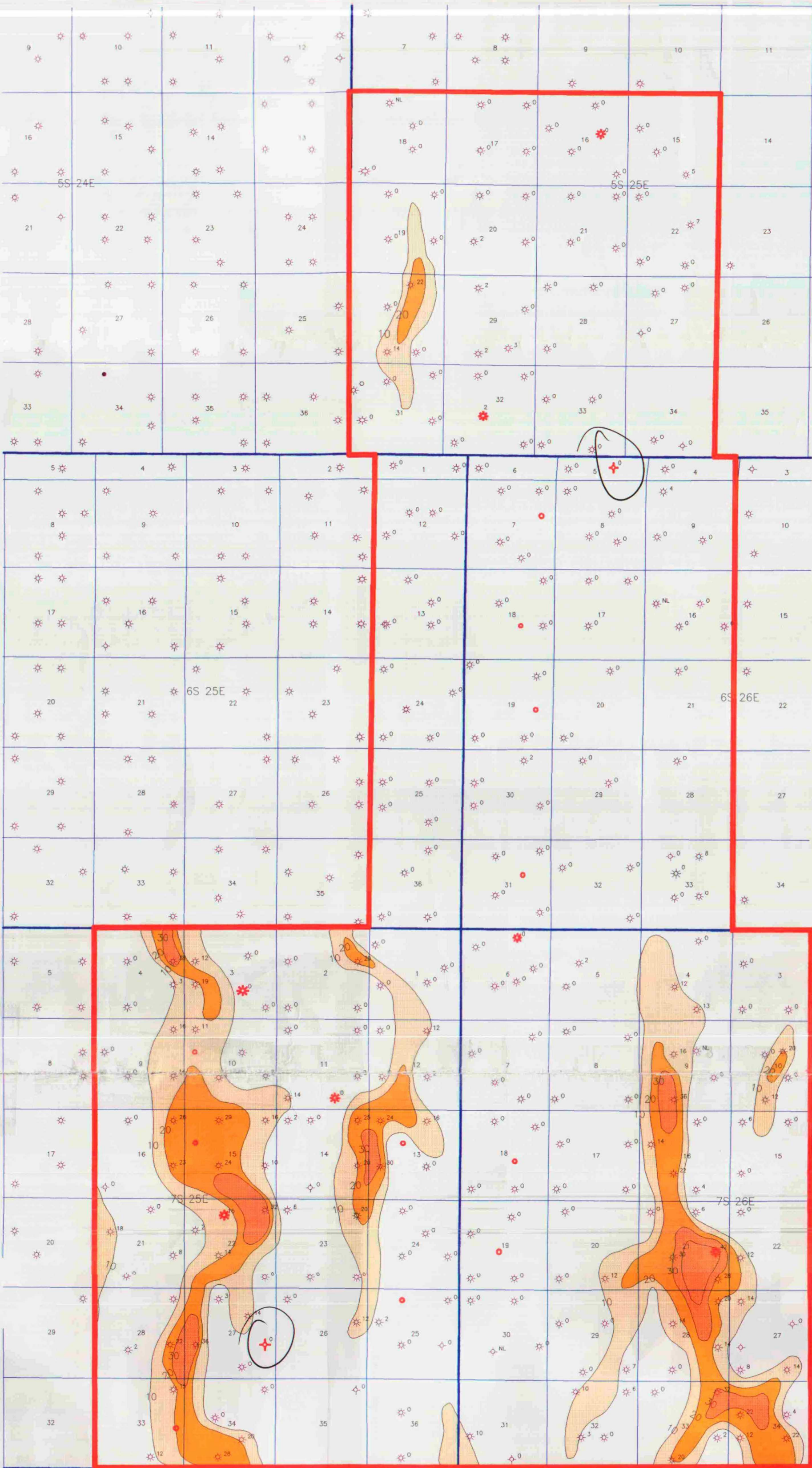
BEFORE THE
OIL CONSERVATION DIVISION
Roswell, New Mexico

Case Nos. 10793, 10981 and 11004 (Reopened)
and 11421 and 11422 Consolidated

Exhibit No. 11

Submitted by: Yates Petroleum Corporation

Hearing Date: November 2, 1995



Yates Petroleum Corporation		
ZONE LOWER C PAY SAND ISOPACH		
GEOLOGY: D'NESE FLY		11/1/95
C.I. = 10'	Scale 1:60000.	94009-JF

 PILOT INFILL WELLS

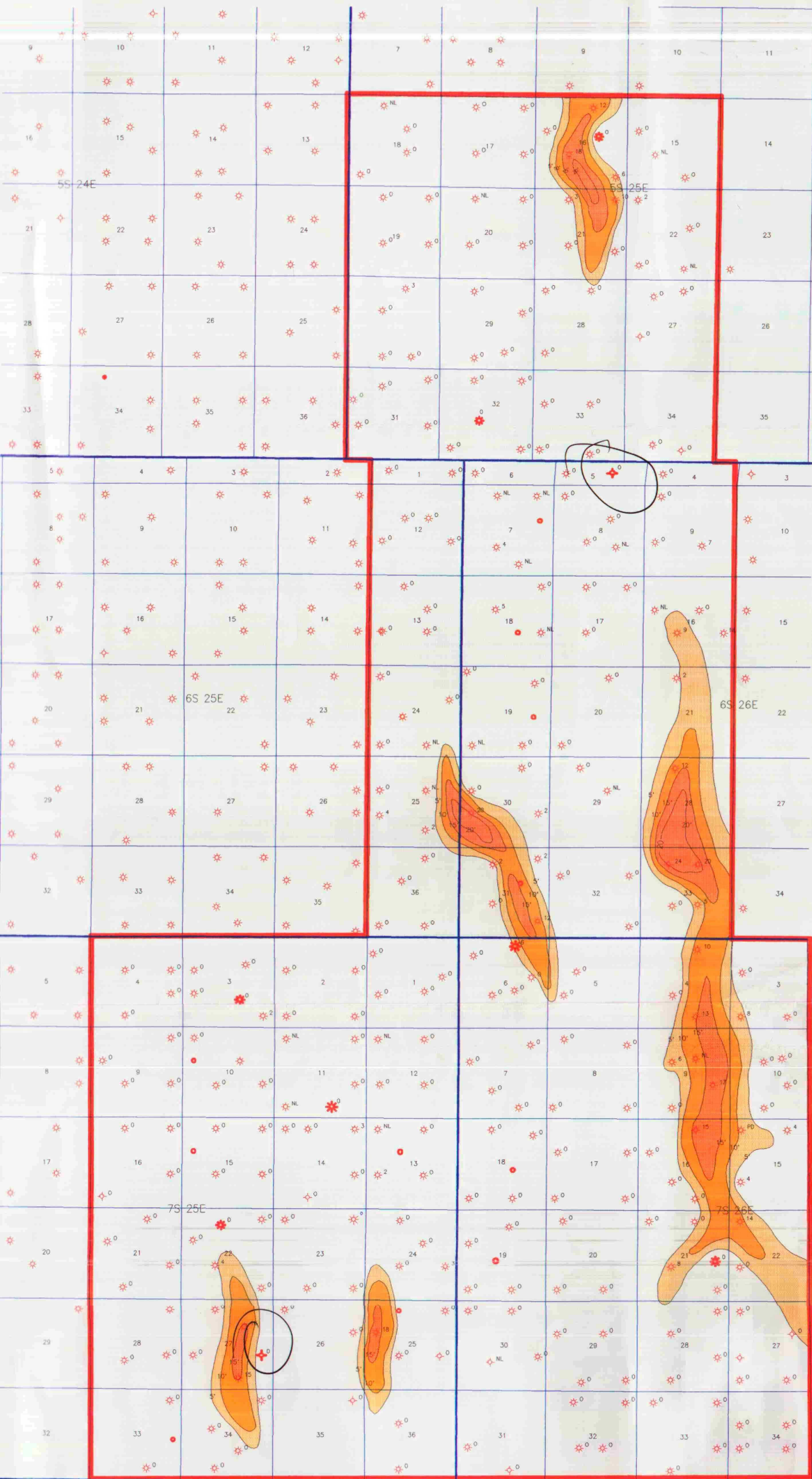
Examiner Catanach
 Case No. 10793, 10981, 11004
Reopened
 EXHIBIT NO. 12

BEFORE THE
OIL CONSERVATION DIVISION
Roswell, New Mexico

Case Nos. 10793, 10981 and 11004 (Reopened)
and 11421 and 11422 Consolidated

Exhibit No. 12
Submitted by: Yates Petroleum Corporation

Hearing Date: November 2, 1995



PILOT INFIELD WELLS

Examiner Catanach
Case No. 10793, 10981 + 11004
Reopened
EXHIBIT NO. 13
Consolidated

Yates Petroleum Corporation

ZONE D
PAY SAND ISOPACH

Geol.: D'NESE FLY

Cl: 5'

11/1/95

Scale 1:60000.

94009-LD

**BEFORE THE
OIL CONSERVATION DIVISION**
Roswell, New Mexico

Case Nos. 10793, 10981 and 11004 (Reopened)
and 11421 and 11422 Consolidated

Exhibit No. 13

Submitted by: Yates Petroleum Corporation

Hearing Date: November 2, 1995

Pecos Slope Abo Infill Drilling Pilot Project

Well Data

<u>Well</u>	<u>Location</u>				<u>Initial</u>		<u>Offsets</u>		<u>Initial</u>		<u>Offsets</u>		<u>Offsets Avg.</u>	
					<u>BHP</u>	<u>(PSIA)</u>	<u>Avg. BHP</u>	<u>(PSIA)</u>	<u>Rate</u>	<u>(MCFD)</u>	<u>Avg. Rate</u>	<u>(MCFD)</u>	<u>Infill Well</u>	<u>Remaining</u>
													<u>Reserves</u>	<u>Reserves</u>
													<u>(MMCF)</u>	<u>(MMCF)</u>
Phase I														
S. Alkali "LK" Fed #5	D	1	6S	25E	667		237		985		123		1,205	230
Kilgore "SO" #3	K	24	6S	25E	885		264		1,100		139		652	290
Sacra "SA" Com #11	G	35	6S	25E	880		309		400		38		426	56
Cottonwood Fed #3	B	26	6S	25E	898		301		1,438		136		618	283
CCC "ANC" Com #1	I	11	6S	25E	680		219		218		94		137	178
Hobbs Fed #4	H	8	6S	25E	479		249		100		71		90	103
Phase I Average					748		263		707		100		521	190
Total									4,241				3,128	
Phase II														
Dee "OQ" St #5	K	32	5S	25E	992		258		1,300		89		946	247
Thorpe "MI" Fed #15	C	22	7S	25E	1,089		189		1,320		70		961	181
Thorpe "MI" Fed Com #11	J	3	7S	25E	807		293		1,500		96		1,092	253
Spring Fed #4	B	5	6S	26E	D&A		--		0		--		0	--
Crandall "UD" #2	B	6	7S	26E	773		263		895		118		652	308
Papalote "OI" St Com #5	I	27	7S	25E	D&A		--		0		--		0	--
Yankee "ANK" Fed Com #1	O	11	7S	25E	489		349		800		78		582	177
Paulette "PV" St #5	G	16	5S	25E	1,046		363		102		32		74	102
Catterson "SS" Fed #7	I	21	7S	26E	438		199		1,000		53		728	97
Phase II Average					805		273		769		77		559	195
Total									6,917				5,035	
<hr/>														
Total Pilot Average					779		269		744		87		544	193
Total									11,158				8,163	

**BEFORE THE
OIL CONSERVATION DIVISION**
Roswell, New Mexico

Case Nos. 10793, 10981 and 11004 (Reopened)
and 11421 and 11422 Consolidated

Exhibit No. 14

Submitted by: Yates Petroleum Corporation

Hearing Date: November 2, 1995

LARGE FORMAT
EXHIBIT HAS
BEEN REMOVED
AND IS LOCATED
IN THE NEXT FILE

LARGE FORMAT
EXHIBIT HAS
BEEN REMOVED
AND IS LOCATED
IN THE NEXT FILE

LARGE FORMAT
EXHIBIT HAS
BEEN REMOVED
AND IS LOCATED
IN THE NEXT FILE