



February 17, 1996

**Southern**

**Rockies**

**Business**

**Unit**

Mr. William J. LeMay, Director  
New Mexico Oil Conservation Division  
2040 S. Pacheco Street  
P.O. Box 6429  
Santa Fe, NM 87505

114190

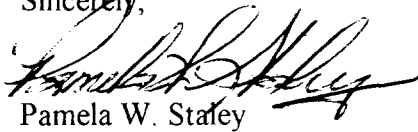
**Application for Exception to Rule 303-A Surface Commingling**  
**Bolack A#1E Well- Basin Dakota Pool**  
**1700' FNL, 1520' FWL, Unit E Section 2-T27N-R11W**  
**Bolack F#1 Well - Fulcher Kutz Pictured Cliffs Gas Pool**  
**1570' FNL & 1510' FWL, Unit F Section 2-T27N-R11W**  
**San Juan County, New Mexico**

Amoco Production Company hereby makes application for exception to NMOCD general rule 303(A) to permit surface commingling of production from the Basin Dakota Pool for the Bolack A#1E well and the Fulcher Kutz Pictured Cliffs Gas Pool for the Bolack F#1 well. These wells are located in Unit F Section 2-T27N-R11W, San Juan County, New Mexico. In support of this application, Amoco states the following:

1. Amoco is the operator of the Basin Dakota Pool underlying the north half of Section 2-T27N-R11W, San Juan County, New Mexico currently dedicated to the Bolack A#1E well.
2. Amoco is the operator of the Fulcher Kutz Pictured Cliffs Gas Pool underlying the northwest quarter of Section 2-T27N-R11W, San Juan County, New Mexico currently dedicated to the Bolack F#1 well.
3. The ownership (WI, RI, ORRI) is not common for the pools which are proposed for surface commingling.
4. The Bolack F#1 is a newly drilled well. The surface commingling will offer an economical method of production using a single train of production equipment.
5. The actual commercial value of the commingled production will not be less than the sum of the values of the production from each of the common sources of supply.
6. Approval of this application will otherwise be in the best interest of conservation, the prevention of waste, and the protection of correlative rights.

Amoco requests that this application be set for examiner hearing of the Oil Conservation Division on March 21, 1996. A copy of this application will be sent to offset operators and to owners in the well (WI, RI, ORRI) by certified mail, return receipt requested. These wells are on lands involving federal leases (SF078306-A, SF-078306, NM-048567) and a copy of the application will be sent to the Bureau of Land Management. **We request the NMOCD publish this case with the comment that in the absence of objection, this case will be taken under advisement.**

Sincerely,



Pamela W. Staley

Attachments

cc: Steve Webb  
Gail Jefferson  
wellfile  
Proration files

Frank Chavez, Supervisor  
NMOCD District III  
1000 Rio Brazos Road  
Aztec, NM 87410

Duane Spencer  
Bureau of Land Management  
1235 La Plata Hwy.  
Farmington, NM 87401

**Application for Surface Commingling**  
**Bolack A #1E**  
**Bolack F #1**  
**List of Attachments**

- C-102 for Bolack A #1E
- C-102 for Bolack F#1
- List of Offset Operators - Pictured Cliffs
- List of Offset Operators - Dakota
- List of Interest Owners for each formation
- 9-Section Plat showing surrounding wells for each formation
- Production Curve for Bolack A #1E
- Proposed Allocation Method
- Surface Schematic

## OIL CONSERVATION DIVISION

STATE OF NEW MEXICO  
ENERGY AND MINERALS DEPARTMENTP. O. BOX 2088  
SANTA FE, NEW MEXICO 87501Form C-107  
Revised 10-1-77

All distances must be from the outer boundaries of the Section.

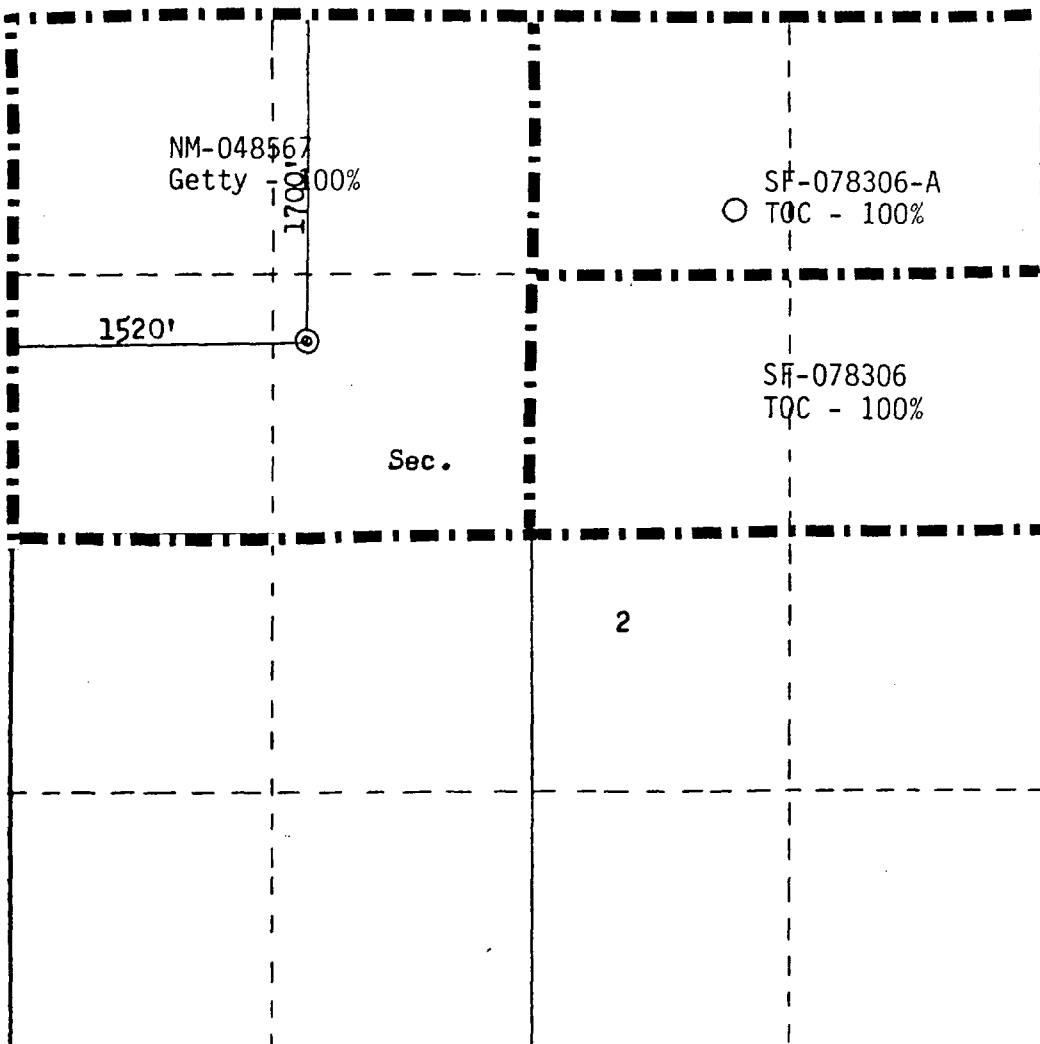
Operator <b>TENNECO OIL COMPANY</b>			Lease <b>BOLACK "A"</b>		Well No. <b>1E</b>
Unit Letter <b>E</b>	Section <b>2</b>	Township <b>27N</b>	Range <b>11W</b>	County <b>San Juan</b>	
Actual Footage Location of Well: <b>1700</b> feet from the <b>North</b> line and <b>1520</b> feet from the <b>West</b> line					
Ground Level Elev: <b>5983</b>	Producing Formation <b>Dakota</b>		Pool <b>Basin Dakota</b>		Dedicated Acreage: <b>320</b> Acres

1. Outline the acreage dedicated to the subject well by colored pencil or hachure marks on the plat below.
2. If more than one lease is dedicated to the well, outline each and identify the ownership thereof (both as to working interest and royalty).
3. If more than one lease of different ownership is dedicated to the well, have the interests of all owners been consolidated by communitization, unitization, force-pooling, etc?

☒ Yes ☐ No If answer is "yes," type of consolidation Communitization

If answer is "no," list the owners and tract descriptions which have actually been consolidated. (Use reverse side of this form if necessary.)

No allowable will be assigned to the well until all interests have been consolidated (by communitization, unitization, forced-pooling, or otherwise) or until a non-standard unit, eliminating such interests, has been approved by the Commission.



## CERTIFICATION

I hereby certify that the information contained herein is true and complete to the best of my knowledge and belief.

Name

Denise Wilson

Position

Production Analyst

Company

Tenneco Oil Company

Date

April 28, 1983

I hereby certify that the well location shown on this plat was plotted from field notes of actual surveys made by me or under my supervision, and that the same is true and correct to the best of my knowledge and belief.

Date Surveyed

March 10, 1983

Registered Professional Engineer  
and Land Surveyor

Fred B. Kerr Jr.

Certificate No. 4

District I  
PO Box 1980, Hobbs, NM 88241-1980  
District II  
PO Drawer DD, Artesia, NM 88211-0719  
District III  
1000 Rio Brazos Rd., Aztec, NM 87410  
District IV  
PO Box 2088, Santa Fe, NM 87504-2088

State of New Mexico  
Energy, Minerals & Natural Resources Department

OIL CONSERVATION DIVISION  
PO Box 2088  
Santa Fe, NM 87504-2088

Form C-102  
Revised February 21, 1994  
Instructions on back  
Submit to Appropriate District Office  
State Lease - 4 Copies  
Fee Lease - 3 Copies

☐ AMENDED REPORT

WELL LOCATION AND ACREAGE DEDICATION PLAT

APN Number		Pool Code		Pool Name	
				Pictured Cliffs	
Property Code	Property Name				Well Number
	Bolack F				#1
OGRID No.	Operator Name				Elevation
00778	AMOCO PRODUCTION COMPANY				5994

10 Surface Location

UL or lot no.	Section	Township	Range	Lot Idn	Feet from the	North/South line	Feet from the	East/West line	County
F	2	27 N	11 W		1570	NORTH	1510	WEST	SAN JUAN

11 Bottom Hole Location If Different From Surface

UL or lot no.	Section	Township	Range	Lot Idn	Feet from the	North/South line	Feet from the	East/West line	County

Dedicated Acres	Joint or Infill	Consolidation Code	Order No.
161.53			

NO ALLOWABLE WILL BE ASSIGNED TO THIS COMPLETION UNTIL ALL INTERESTS HAVE BEEN CONSOLIDATED  
OR A NON-STANDARD UNIT HAS BEEN APPROVED BY THE DIVISION

<p>16</p>	<p>17 OPERATOR CERTIFICATION</p> <p>I hereby certify that the information contained herein is true and complete to the best of my knowledge and belief.</p> <p><i>Julie L. Acevedo</i></p> <p>Signature</p> <p>Julie L. Acevedo</p> <p>Printed Name</p> <p>Sr. Staff Assistant</p> <p>Title</p> <p>12/6/94</p> <p>Date</p>	
	<p>18 SURVEYOR CERTIFICATION</p> <p>I hereby certify that the well location shown on this plat was plotted from field notes of actual surveys made by me or under my supervision, and that the same is true and correct to the best of my belief.</p> <p>October 12, 1994</p> <p>Date of Survey</p> <p><i>Gale D. Vandy</i></p> <p>Signature and Seal of Professional Surveyor</p>	
	<p>7016</p> <p>Certificate Number</p>	

## OFFSET OPERATOR LIST

### BOLACK A#1E DAKOTA

W/2 SEC 35 T28N-R11W - BHP PETROLEUM AMERICAS, INC.  
E/2 SEC 35 T28N-R11W - BHP PETROLEUM AMERICAS, INC.  
W/2 SEC 36 T28N-R11W - BHP PETROLEUM AMERICAS, INC.  
E/2 SEC 34 T28N-R11W - CONOCO, INC.  
E/2 SEC 3 T27N-R11W - CONOCO, INC.  
N/2 SEC 2 T27N-R11W - AMOCO PRODUCTION COMPANY  
S/2 SEC 2 T27N-R11W - MERIDIAN OIL INC.  
N/2 SEC 1 T27N-R11W - BHP PETROLEUM AMERICAS, INC.  
S/2 SEC 1 T27N-R11W - BHP PETROLEUM AMERICAS, INC.

### BOLACK F#1 PICTURED CLIFFS

SW/4 SEC 35 T28N-R11W - BHP PETROLEUM AMERICAS, INC.  
NO WELLS IN OTHER SURROUNDING QUARTERS THEREFORE NO DESIGNATED  
OPERATOR

#### ADDRESSES:

- 1 Conoco, Inc.  
10 Desta Drive West  
Midland, Texas 79705  
Attn.: Mr. Jerry Hoover
- 2 Meridian Oil, Inc.  
P.O. Box 4289  
Farmington, NM 87499  
Attn.: Mr. Alan Alexander
- 3 BHP Petroleum Americas , Inc.  
1360 Post Oak , Suite 500  
Houston, Texas 77056-3020  
Attn.: Mr. Dwight Pickle

69853900 00001 ZJAM63  
269798 00  
AMERICAN EXPLORATION COMPANY  
P O BOX 297166  
HOUSTON TX 77297-0166

69853900 00001 ZJAM63  
409190 27  
TEXACO EXPLORATION AND PRODUCTION INC  
C/O TEXAS COMMERCE BANK  
P O BOX 200778  
HOUSTON TX 77216-0778

69853900 00001 ZJAM63  
617000 00  
AMOCO PRODUCTION COMPANY  
P O BOX 591  
TULSA OK 74102-0591

69853900 00001 ZJAM63  
710000 01  
MINERALS MANAGEMENT SERVICE  
ROYALTY MANAGEMENT PROGRAM  
PO BOX 5810 IA  
DENVER CO 80217-5810

69853900 00001 ZJAM63  
726301 04  
UNIVERSAL RESOURCES CORPORATION  
MAIL STOP E8704  
P O BOX 11070  
SALT LAKE CITY UT 84147-0070

Bolack A#1E  
Bolack F#1

# Bolack A #1E (Dakota Wells)


28

27

<p>+</p> <p>+</p>	<p>+</p> <p>+</p>	<p>+</p> <p>+</p>
<p>SCHLOSSER FID SE + ARCO</p> <p>34</p> <p>SCHLOSSER FID 4 SINCLAIR +</p> <p>SCHLOSSER FID 4E + ARCO</p> <p>SCHLOSSER FID 5 SINCLAIR +</p>	<p>E.H. PIPKIN 7E ENERGY RESERVES + GROUP</p> <p>E.H. PIPKIN 7 PAN AM</p> <p>E.H. PIPKIN 7E ENERGY RESERVES + GROUP</p> <p>E.H. PIPKIN 9 + PAN AM</p> <p>35</p>	<p>E.H. PIPKIN 5 PAN AM</p> <p>E.H. PIPKIN 6E ENERGY RESERVES + GROUP</p> <p>E.H. PIPKIN 6 + PAN AM</p> <p>E.H. PIPKIN 5E ENERGY RESERVES GROUP</p> <p>36</p>
<p>SCHLOSSER FID 2E + ARCO</p> <p>SCHLOSSER FID 6 SINCLAIR</p> <p>3</p> <p>SCHLOSSER FID 2R + ARCO</p> <p>+ SCHLOSSER FID 2 ARCO</p> <p>SCHLOSSER FID 4E + ARCO</p> <p>SCHLOSSER FID 2 WESTERN</p>	<p>BOLACK A 1 + TUNNEL</p> <p>BOLACK A 1E TUNNEL</p> <p>2</p> <p>+ ANGEL PEAK 1 EL PASO</p> <p>+ ANGEL PEAK 1E EL PASO</p>	<p>E.H. PIPKIN 10 + PAN AM</p> <p>E.H. PIPKIN 10E ENERGY RESERVES GROUP</p> <p>E.H. PIPKIN 8X + PAN AM</p> <p>+ E.H. PIPKIN 8E ENERGY RESERVES GROUP</p> <p>1</p>
<p>SCHLOSSER FID 1 + ARCO</p> <p>SCHLOSSER FID 1 ARCO</p> <p>+ SCHLOSSER FID 1R ARCO</p> <p>10</p> <p>+ SCHLOSSER FID 1E ARCO</p> <p>SCHLOSSER FID 7E ARCO</p> <p>+ SCHLOSSER FID 7 SINCLAIR</p>	<p>FULLERTON FID 6E + GULF</p> <p>FULLERTON FID 6 + BRITISH AMERICAN</p> <p>11</p> <p>+ FULLERTON FID 7 BRITISH AMERICAN</p>	<p>E.H. PIPKIN 12E ENERGY RESERVES + GROUP</p> <p>E.H. PIPKIN 12 + PAN AM</p> <p>+ E.H. PIPKIN 11E ENERGY RESERVES GROUP</p> <p>+ E.H. PIPKIN 11 PAN AM</p> <p>12</p>
<p>+</p>	<p>+</p>	<p>+</p>



# Bolack A #1E (Pictured Cliff Wells)

<p>+</p> <p>+</p>	<p>+</p> <p>+</p>	<p>+</p>
<p>Schlusser 15 R-G DRILLING +</p> <p>34</p>	<p>E.H. PIPKIN 15 ENERGY RESERVES + GROUP</p> <p>E.H. PIPKIN 14 ENERGY RESERVES + GROUP</p> <p>E.H. PIPKIN 22 + ENERGY RESERVES GROUP</p> <p>E.H. PIPKIN 21 ENERGY RESERVES + GROUP</p> <p>35</p>	<p>E.H. PIPKIN 23 ENERGY RESERVES + GROUP</p> <p>+ E.H. PIPKIN 1 PAN AM</p> <p>E.H. PIPKIN 25 ENERGY RESERVES + GROUP</p> <p>E.H. PIPKIN 24 ENERGY RESERVES + GROUP</p> <p>36</p>
<p>28</p> <p>27</p> <p>3</p>	<p>Bolack Cam 1 + Amoco</p> <p>  </p> <p>2</p>	<p>E.H. PIPKIN 4 ENERGY RESERVES + GROUP</p> <p>E.H. PIPKIN 13 ENERGY RESERVES + GROUP</p> <p>+ E.H. PIPKIN 17 ENERGY RESERVES GROUP</p> <p>+ E.H. PIPKIN 16 ENERGY RESERVES GROUP</p> <p>1</p>
<p>Schlusser 12 R-G DRILLING +</p> <p>Schlusser 20 R-G DRILLING +</p> <p>10</p> <p>Schlusser 1 R-G DRILLING +</p> <p>+ Schlusser 16 R-G DRILLING</p>	<p>FULLERTON FED Cam 12 + GULF</p> <p>FULLERTON FED Cam 15 + GULF</p> <p>11</p>	<p>E.H. PIPKIN 20 ENERGY RESERVES + GROUP</p> <p>E.H. PIPKIN 18 ENERGY RESERVES + GROUP</p> <p>+ E.H. PIPKIN 3 ENERGY RESERVES GROUP</p> <p>12</p>
<p>+</p> <p>+</p>	<p>+</p>	

### **PROPOSED ALLOCATION METHOD**

Anticipated production from the Bolack A#1E is 225 MCFD. This formation is currently on compression. The estimated production from the newly drilled Bolack F#1 is 190 MCFD and is based on recent well tests. Both formations will be on compression when the surface commingling commences.

We propose to test each well prior to commingling to establish the percentage contribution from each well. Based on the testing that we did on the Bolack F#1 we do not anticipate any flush production from the Pictured Cliffs formation. It is our opinion that this well will follow the relatively flat declines seen in this area (6-8%). After establishing original percentages, we envision testing each well annually in order to establish percentages for the next period. The proposed allocation percentages will be provided to your Aztec District office after testing.

# Amoco Production Company

## ENGINEERING CHART

SUBJECT Bolack F-1 Hook-up with  
Bolack F-1E

