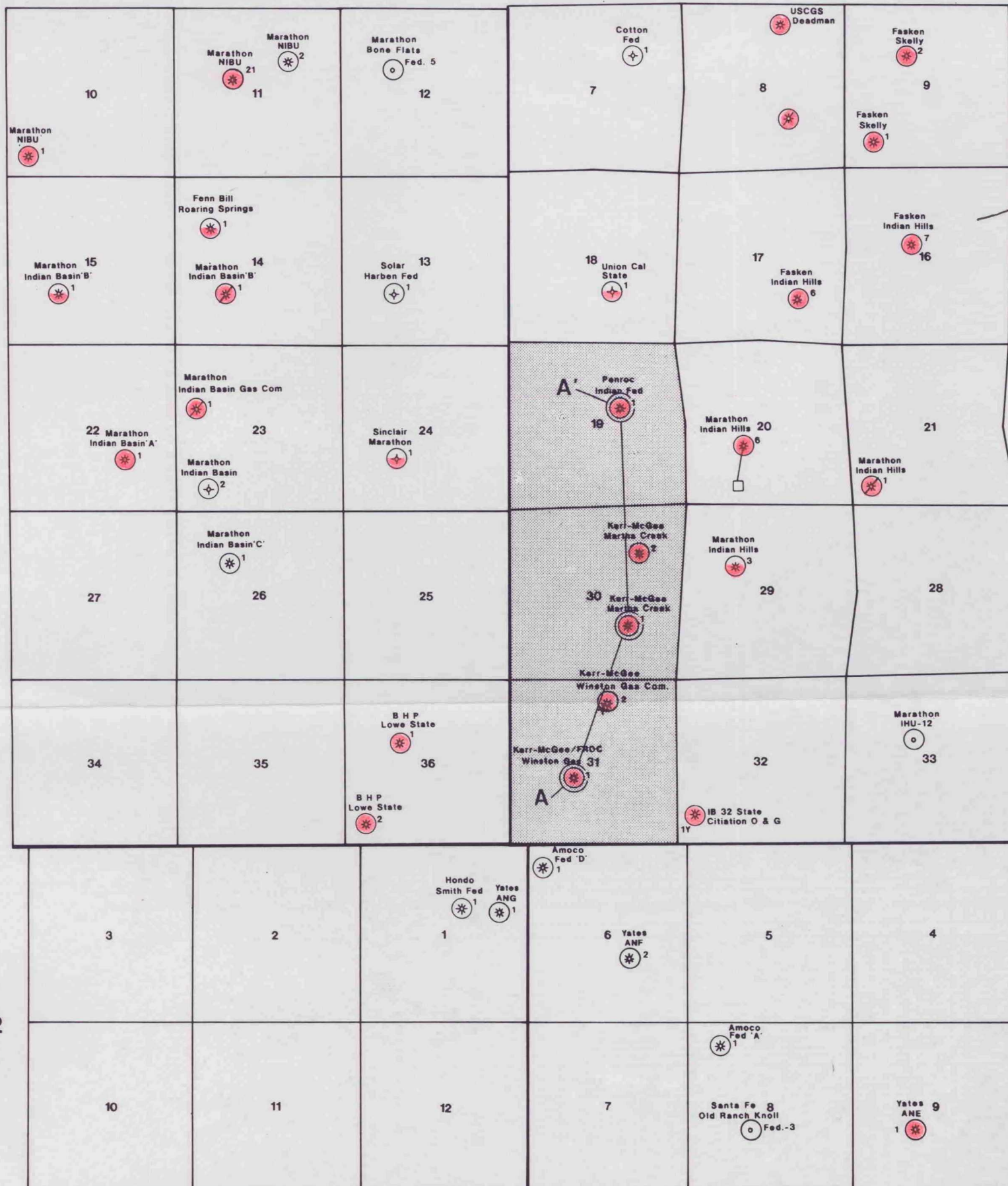


R 23 E

R 24 E

T
21
ST
22
S

Morrow Penetrations Only Shown

- MORROW PENETRATION
- MORROW PRODUCTIVE
- MORROW DST GAS SHOW or PROD. TEST SHOW

**KERR-MCGEE CORPORATION****INDIAN BASIN****EDDY COUNTY, NEW MEXICO**

BEFORE THE

OIL CONSERVATION DIVISIONCase No. 11512 Exhibit No. 1

Submitted By:

KERR MCGEE CORPORATION

Hearing Date: May 2, 1996

Scale: 1" = 4000'

124 total
124 returned
- Amoco
- Hummer
- O'Brien

Pool

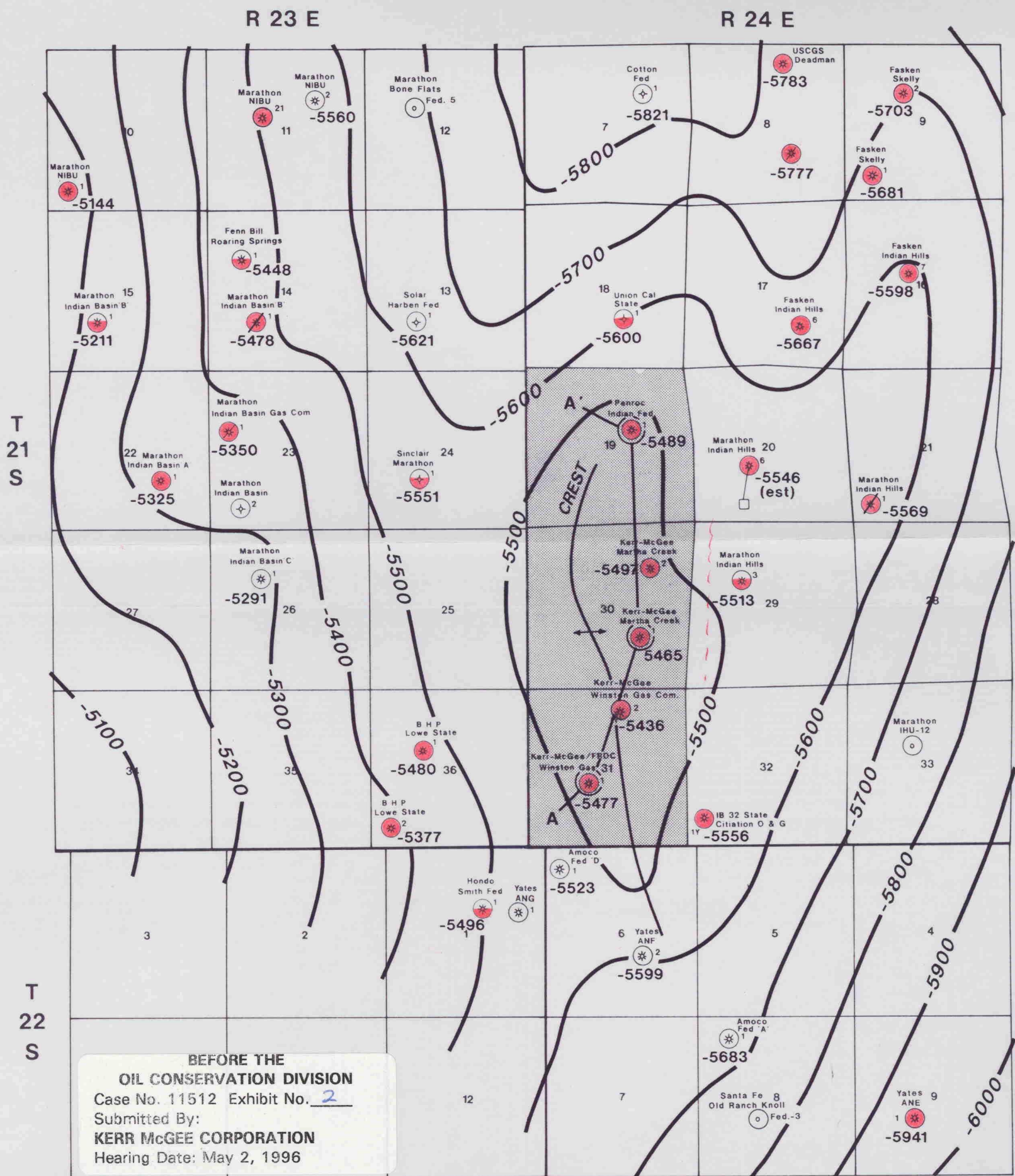
- WI's
- Roys
- OPR's

Offshore Operators
- Conoco
- Falkamer

Unleased
Leases




Devon
Unleased
No others

NGAL
Agave



N

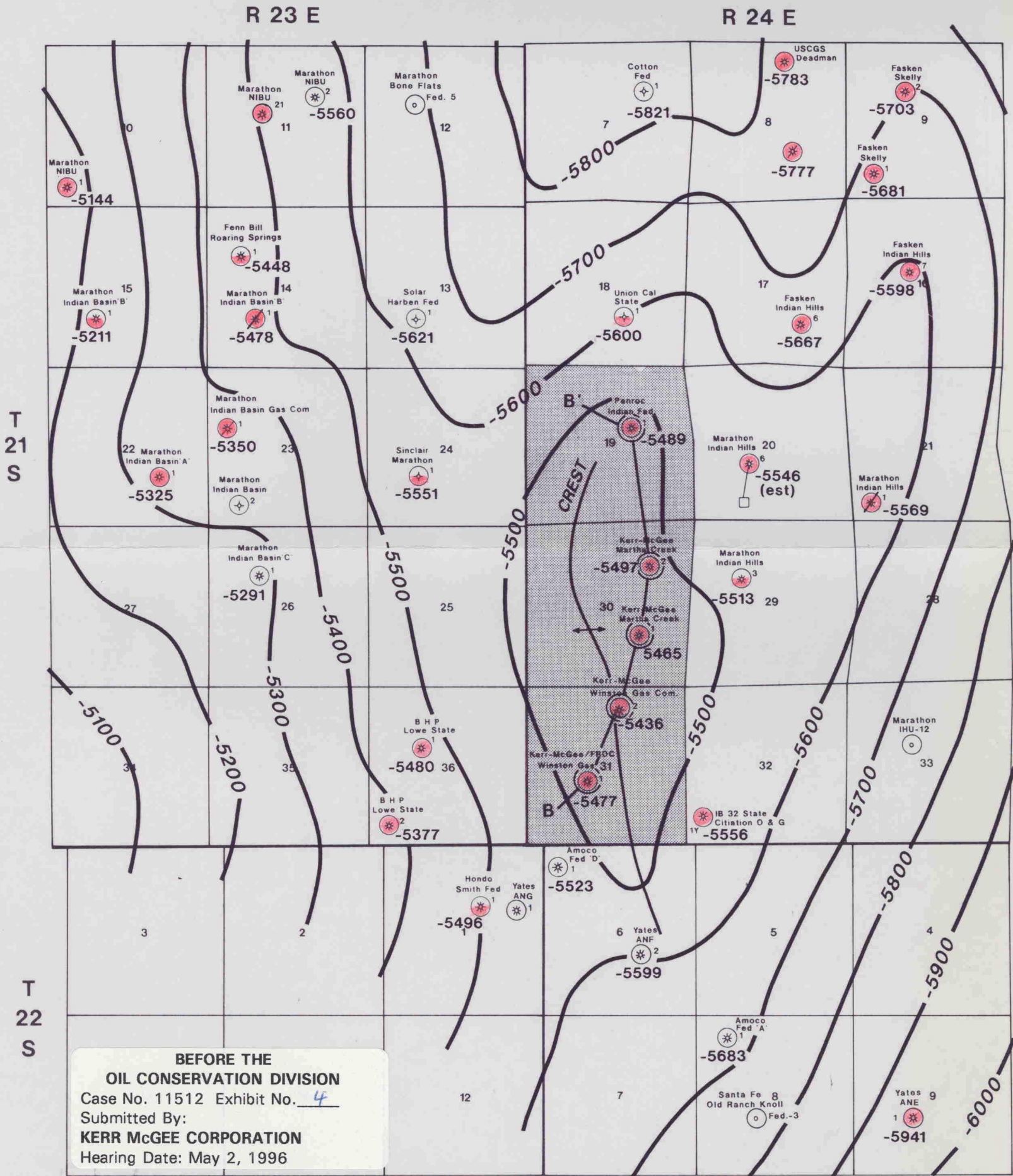
Morrow Penetrations Only Shown

-  MORROW PENETRATION
-  MORROW PRODUCTIVE
-  MORROW DST GAS SHOW
or PROD. TEST SHOW



H-47

LARGE FORMAT
EXHIBIT HAS
BEEN REMOVED
AND IS LOCATED
IN THE NEXT FILE



N

Morrow Penetrations Only Shown

- MORROW PENETRATION
- MORROW PRODUCTIVE
- MORROW DST GAS SHOW or PROD. TEST SHOW

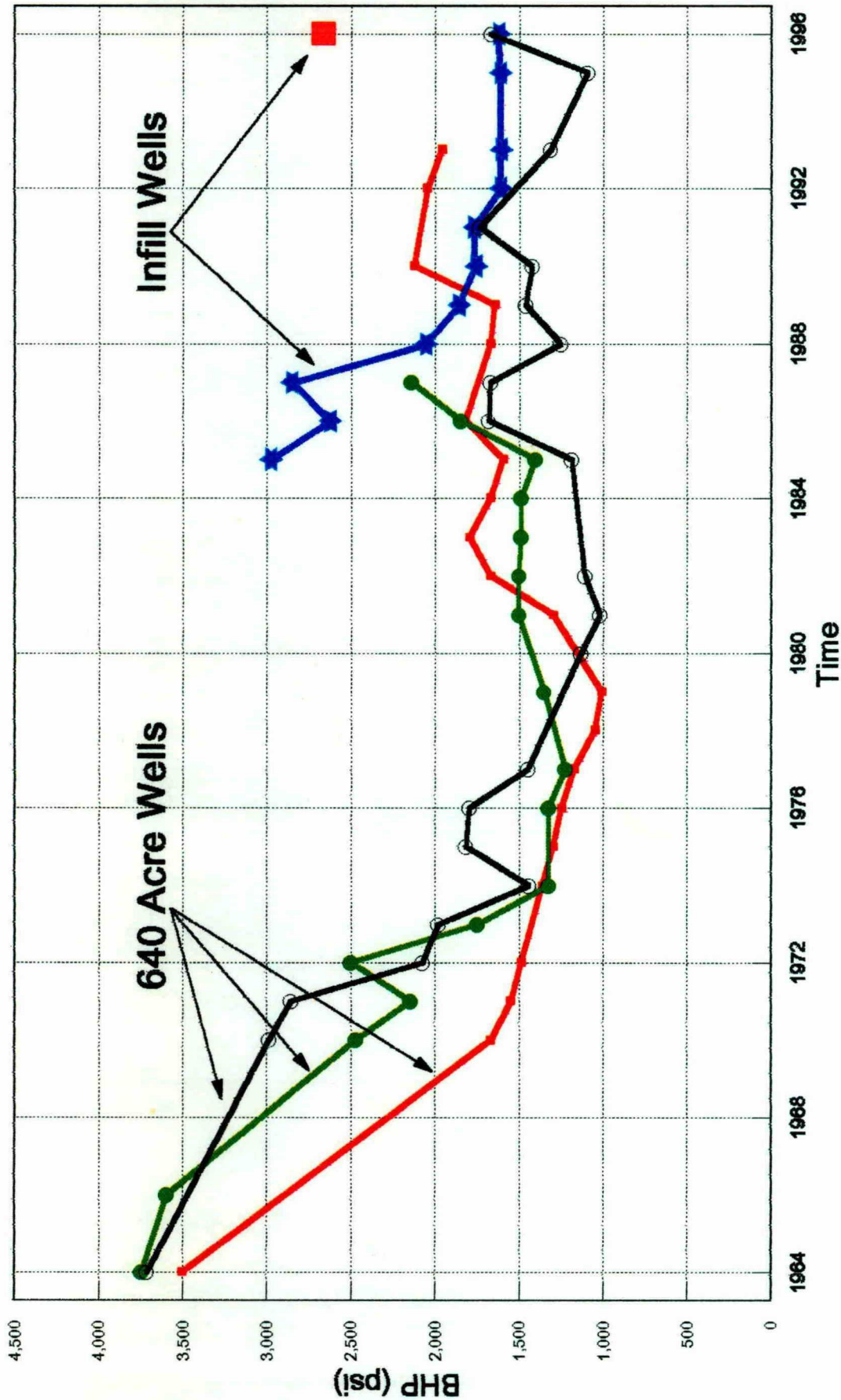
KERR-MCGEE CORPORATION

INDIAN BASIN
EDDY COUNTY, NEW MEXICO

MIDDLE MORROW STRUCTURE
C.I. = 100'

Scale: 1" = 4000' Date: 4/96 By: D.D.M.

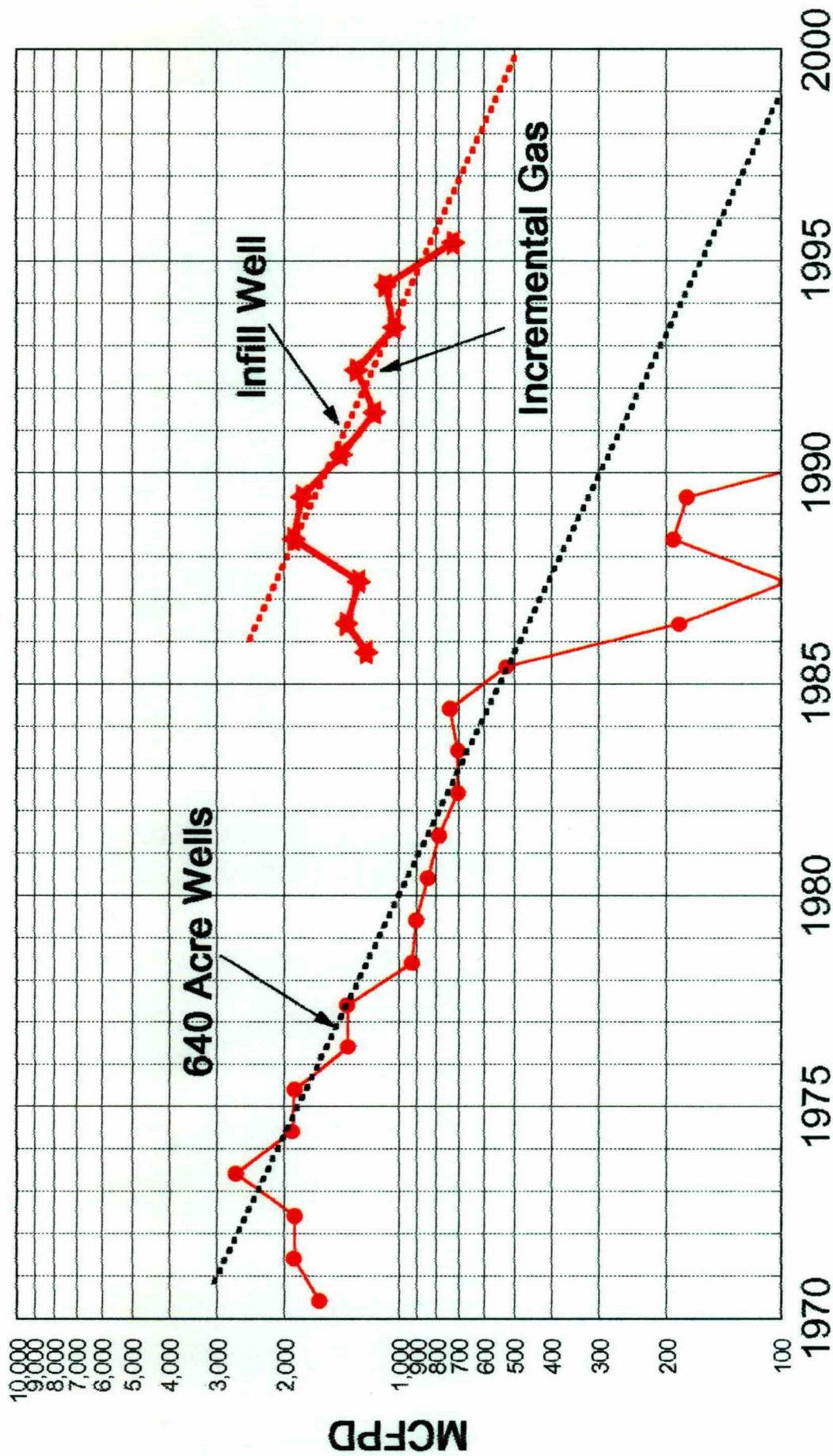
LARGE FORMAT
EXHIBIT HAS
BEEN REMOVED
AND IS LOCATED
IN THE NEXT FILE



Indian Basin (Morrow) Field

Bottom-hole Pressure vs Time

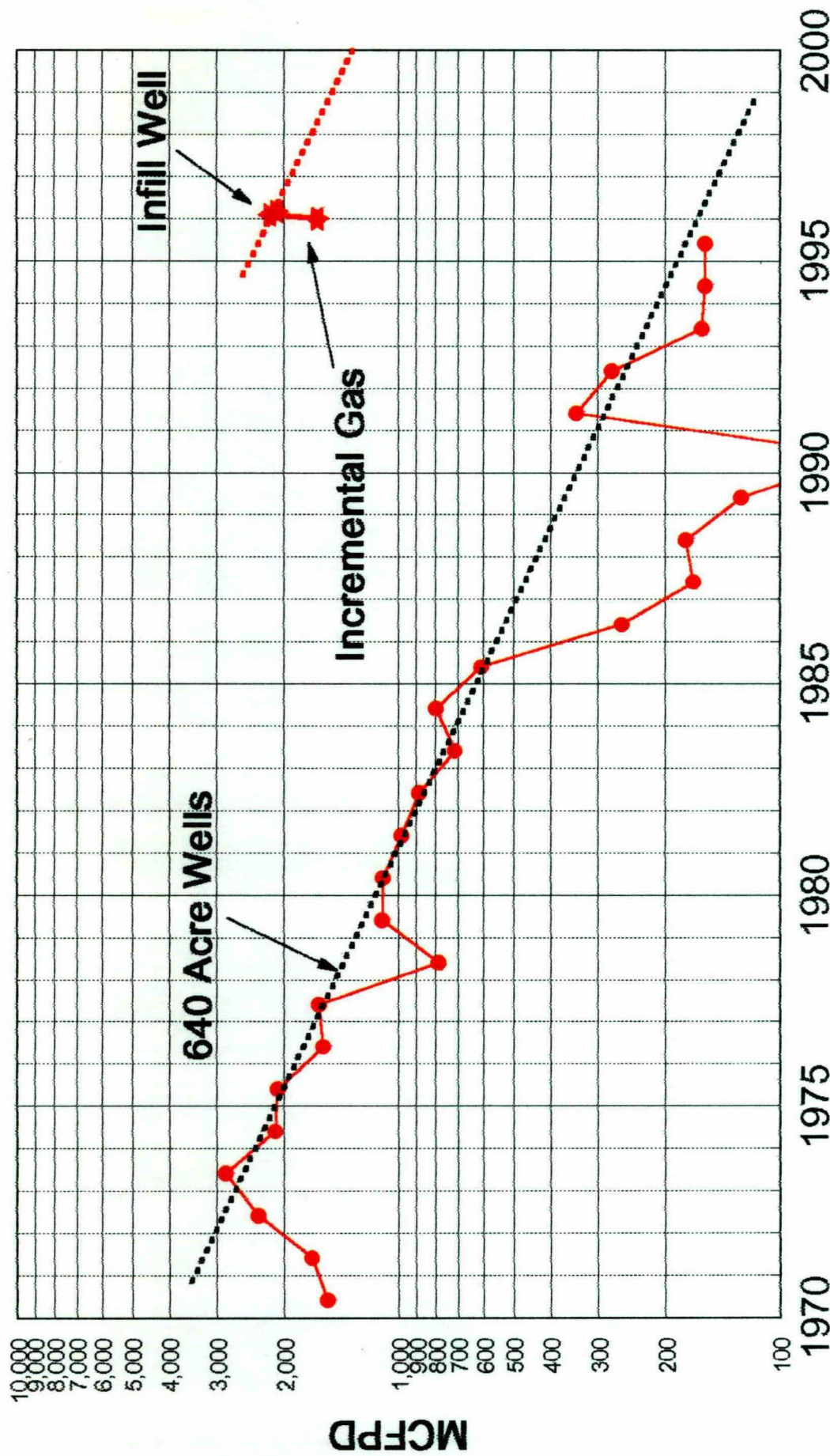
Before the Oil Conservation Division
 Santa Fe, New Mexico
 Kerr McGee Corp. Exhibit No. 6
 Case No. - 11512
 May 2, 1996



INDIAN BASIN (MORROW)

PRODUCTION SUMMARY - SECTIONS 19 & 30, T-21-S, R-24-E

Before the Oil Conservation Division
 Santa Fe, New Mexico
 Kerr McGee Corp. Exhibit No. **7**
 Case No. - **11512**
 May 2, 1996



WINSTON #1 + MC #1 WINSTON #2



INDIAN BASIN (MORROW)

PRODUCTION SUMMARY - SECTIONS 30 & 31, T-21-S, R-24-E

Before the Oil Conservation Division

Santa Fe, New Mexico

Kerr McGee Corp. Exhibit No. 8

Case No. -11512

May 2, 1996