



**Application of Amoco Production Company  
for Simultaneous Dedication  
Ute Indian #4-22 Well  
San Juan County, New Mexico**

**BEFORE THE  
OIL CONSERVATION DIVISION  
Santa Fe, New Mexico**

Case No. 11586 Exhibit No. 1

Submitted by: Amoco Production Company

Hearing Date: August 8, 1996

BEFORE THE  
ENERGY, MINERALS AND NATURAL RESOURCES DEPARTMENT  
OIL CONSERVATION DIVISION

APPLICATION OF AMOCO PRODUCTION  
COMPANY FOR SIMULTANEOUS DEDICATION,  
SAN JUAN COUNTY, NEW MEXICO

CASE NO. \_\_\_\_\_

**APPLICATION**

AMOCO PRODUCTION COMPANY ("Amoco"), through its undersigned attorneys,  
hereby makes application for authorization for simultaneous dedication, and in support of its  
application states:

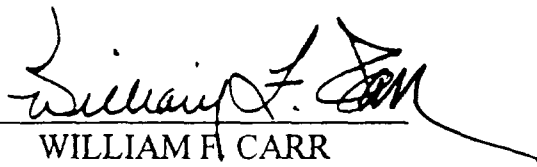
1. Amoco is the operator of the Ute Indian A-17 Well which is completed as a  
producing gas well in the Dakota formation, Ute Dome-Dakota Gas Pool, at a standard  
location in the NW/4 of Section 2, Township 31 North, Range 14 West, N.M.P.M., San Juan  
County, New Mexico.
2. The Amoco Ute Indian A-17 Well is unable to effectively drain the reserves  
under the NW/4 of said Section 2 due to faults in the Dakota formation which transverse this  
spacing unit.
3. Amoco seeks an exception to Oil Conservation Division General Rule 104 C  
3 to permit it to drill its proposed Ute Indian A-22 Well at a standard location as a second  
well in the NW/4 of said Section 2 and simultaneously dedicate the NW/4 of Section 2 to the  
Ute Indian A-17 and A-22 Wells.

4. Approval of this application and the drilling of the Ute Indian A-22 Well will enable Amoco to produce its just and fair share of the reserves under the NW/4 of said Section 2 and will otherwise be in the best interest of conservation and the protection of correlative rights.

WHEREFORE, Amoco Production Company requests that this application be set for hearing before an Examiner of the Oil Conservation Division on August 8, 1996, and, after notice and hearing as required by law, the Division enter its order granting this application and authorizing the simultaneous dedication of the NW/4 of Section 2, Township 31 North, Range 14 West, N.M.P.M. to the Amoco Ute Indian A-17 and A-22 Wells.

Respectfully submitted,

CAMPBELL, CARR, BERGE,  
& SHERIDAN, P.A.

By:   
WILLIAM F. CARR  
Post Office Box 2208  
Santa Fe, New Mexico 87504  
Telephone: (505) 988-4421

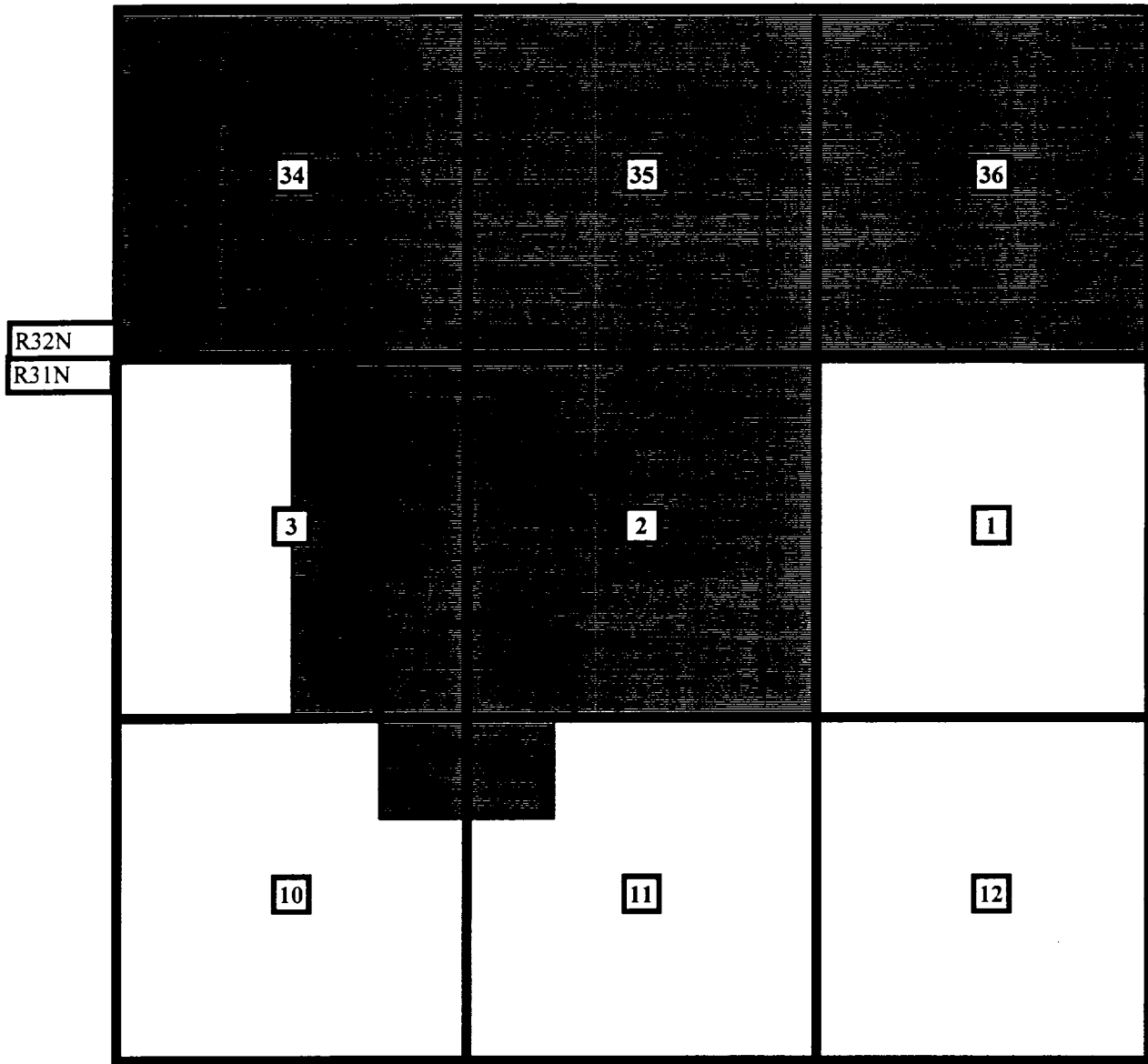
ATTORNEYS FOR AMOCO PRODUCTION  
COMPANY





**AMOCO PRODUCTION COMPANY NOTICE PLAT**

**Proposed Ute Indian A-22  
2150'FWL & 1880'FNL  
Unit F Section 2 - T31N- R14W  
San Juan County, NM**



District I  
PO Box 1980, Hobbs, NM 88241-1980  
District II  
PO Drawer DD, Artesia, NM 88211-0719  
District III  
1000 Rln Hrazum Rd., Aztec, NM 87410  
District IV  
PO Box 2088, Santa Fe, NM 87504-2088

State of New Mexico  
Energy, Minerals & Natural Resources Department

OIL CONSERVATION DIVISION  
PO Box 2088  
Santa Fe, NM 87504-2088

Form C-102  
Revised February 21, 1994  
Instructions on back  
Submit to Appropriate District Office  
State Lease - 4 Copies  
Fee Lease - 3 Copies

☐ AMENDED REPORT

WELL LOCATION AND ACREAGE DEDICATION PLAT

1 API Number		1 Pool Code		1 Pool Name UTE INDIANS # A-22	
1 Property Code		1 Property Name NW 2-31-14			1 Well Number
1 OGRID No.		1 Operator Name AMOCO PRODUCTION COMPANY			1 Elevation 5995

10 Surface Location

UL or lot no.	Section	Township	Range	Lot Idn	Feet from the	North/South line	Feet from the	East/West line	County
F	2	31 N	14 W		1880	NORTH	2150	WEST	SAN JUAN

11 Bottom Hole Location If Different From Surface

UL or lot no.	Section	Township	Range	Lot Idn	Feet from the	North/South line	Feet from the	East/West line	County

12 Dedicated Acres	13 Joint or Infill	14 Consolidation Code	15 Order No.

NO ALLOWABLE WILL BE ASSIGNED TO THIS COMPLETION UNTIL ALL INTERESTS HAVE BEEN CONSOLIDATED  
OR A NON-STANDARD UNIT HAS BEEN APPROVED BY THE DIVISION

<p>16</p> <p>2</p>	<p>17 OPERATOR CERTIFICATION</p> <p>I hereby certify that the information contained herein is true and complete to the best of my knowledge and belief.</p> <p>Signature _____</p> <p>Printed Name _____</p> <p>Title _____</p> <p>Date _____</p>
	<p>18 SURVEYOR CERTIFICATION</p> <p>I hereby certify that the well location shown on this plat was plotted from field notes of actual surveys made by me or under my supervision, and that the same is true and correct to the best of my belief.</p> <p>July 5, 1996</p> <p>Date of Survey _____</p> <p>Signature and Seal of Professional Surveyor: _____</p>
	<p>7016</p> <p>Certificate Number _____</p>

**AMOCO PRODUCTION COMPANY**  
**WELL LOCATIONS**

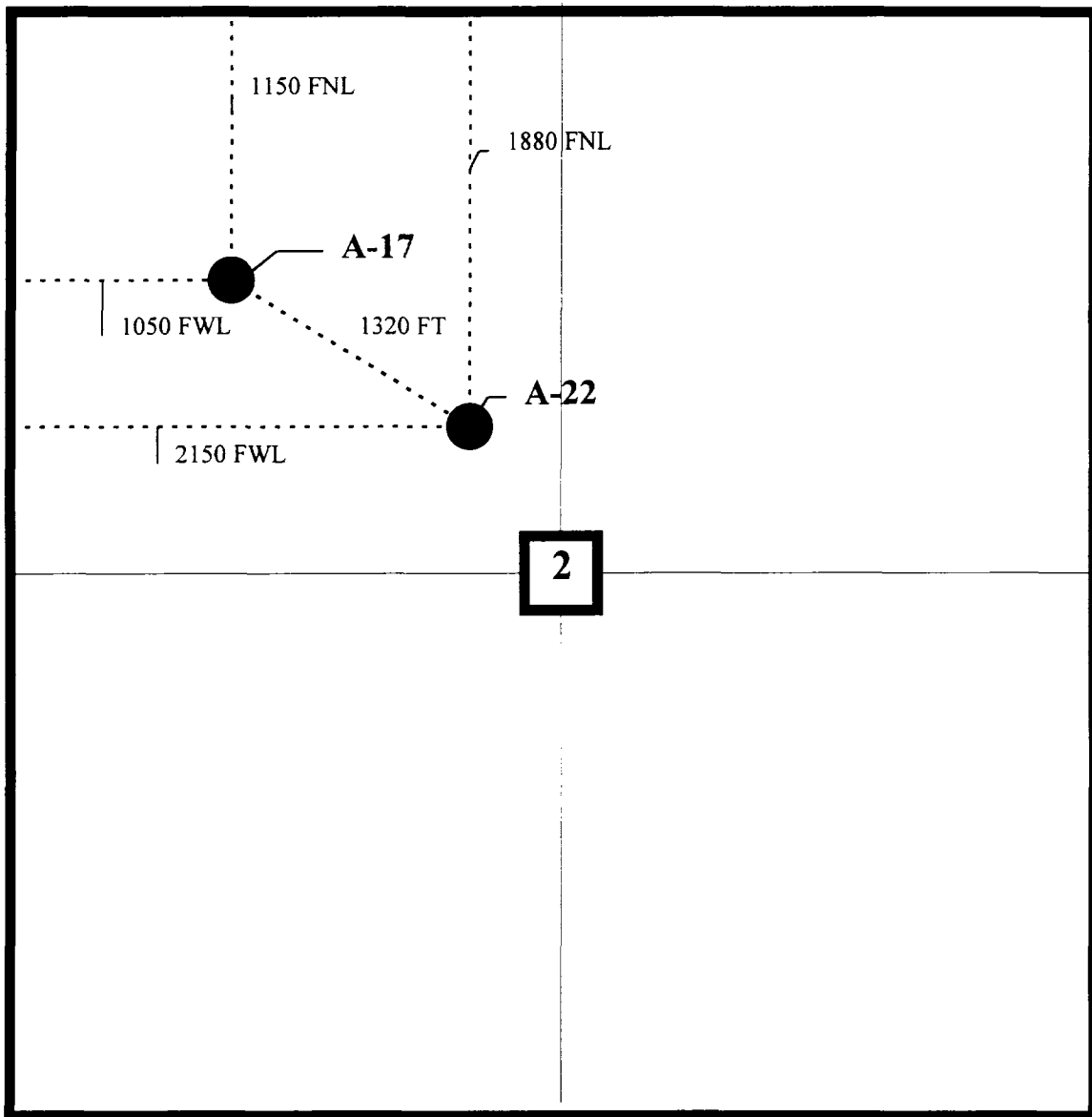
**Proposed Ute Indian A-22**  
**2150'FWL & 1880'FNL**  
**Unit F Section 2 - T31N- R14W**  
**San Juan County, NM**

1993 Survey

21  
1320  
1150  

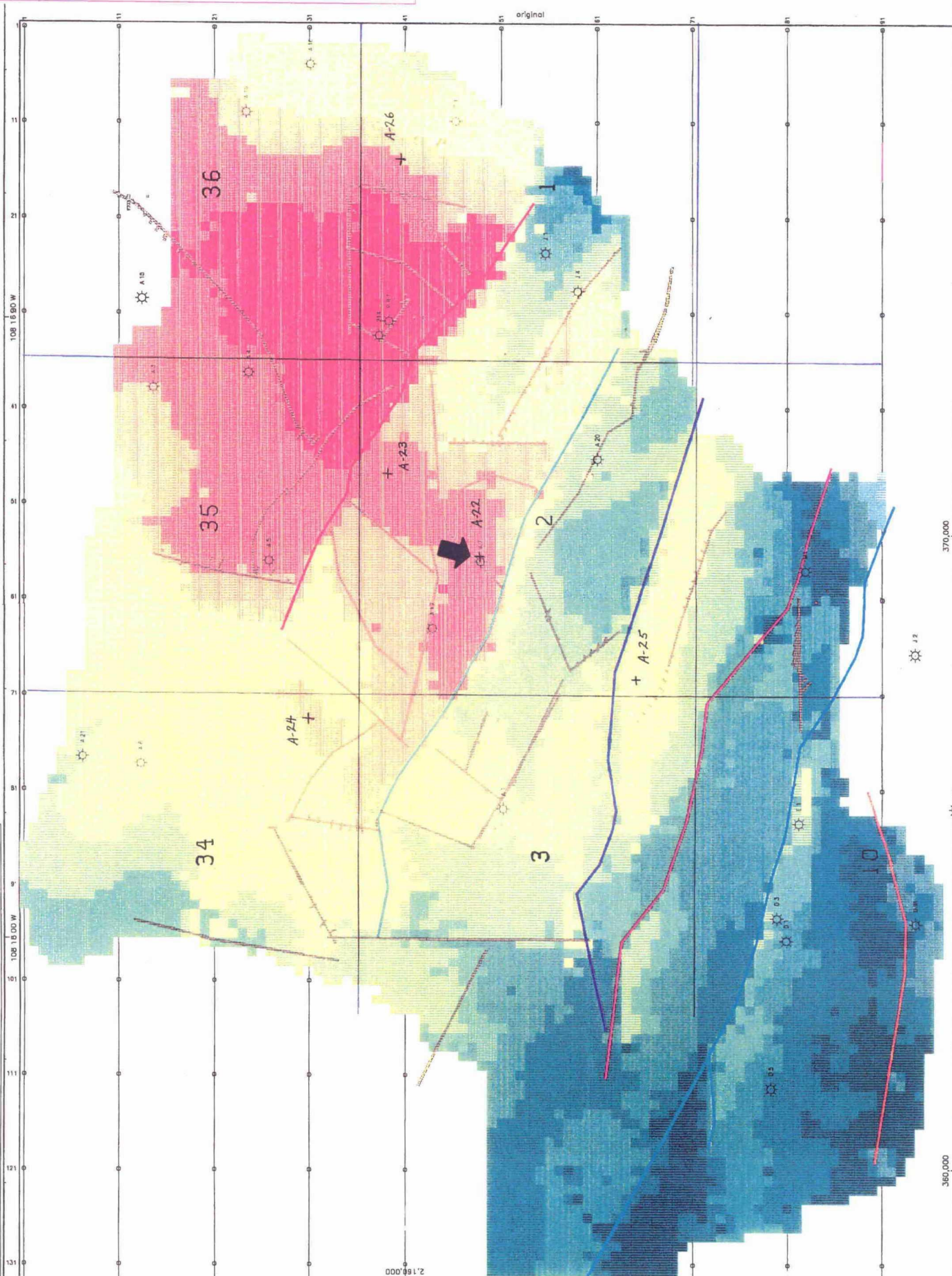
---

170



- A-17 WELL IS AT AN ORTHODOX LOCATION
- A-22 WELL IS 490 FEL AND 760 FSL
- DISTANCE BETWEEN WELLS WILL BE 1320'

ms	FT
473.0	3800
482.0	
491.0	3700
500.0	
509.0	3600
510.0	
527.0	3500
538.0	
543.0	3400
551.0	
561.0	3300
572.0	
581.0	
590.0	
599.0	
600.0	
617.0	
626.0	
625.0	
644.0	
652.0	
662.0	
671.0	
680.0	
680.0	

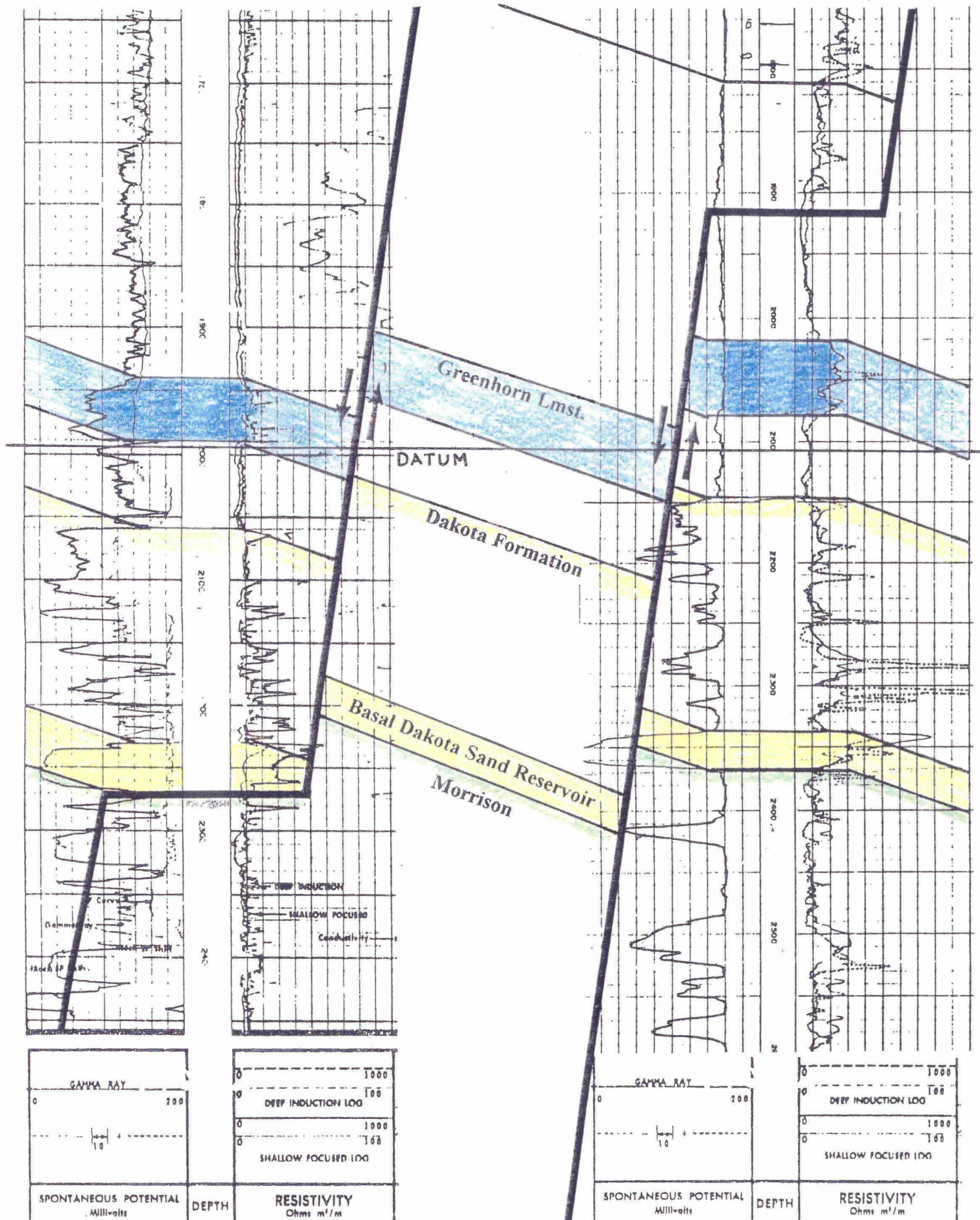


	360,000	bmap_ute_dome_18	1-Aug-1996 16:13
		hman ute dome 18	com for znefNE at deccnfNE



Amoco Production Company  
 Ute Indian "A" #17  
 NWNW Sec. 2 T31N R14E  
 San Juan County, New Mexico  
 KB 5895'

Stanolind Oil & Gas Company  
 Ute Indian #7  
 SENW Sec. 2 T31N R14E  
 San Juan County, New Mexico  
 KB 6008'





## Ute Indians A-22

### Ute Dome Field SENW Section 2 T31N R14W San Juan County, New Mexico

